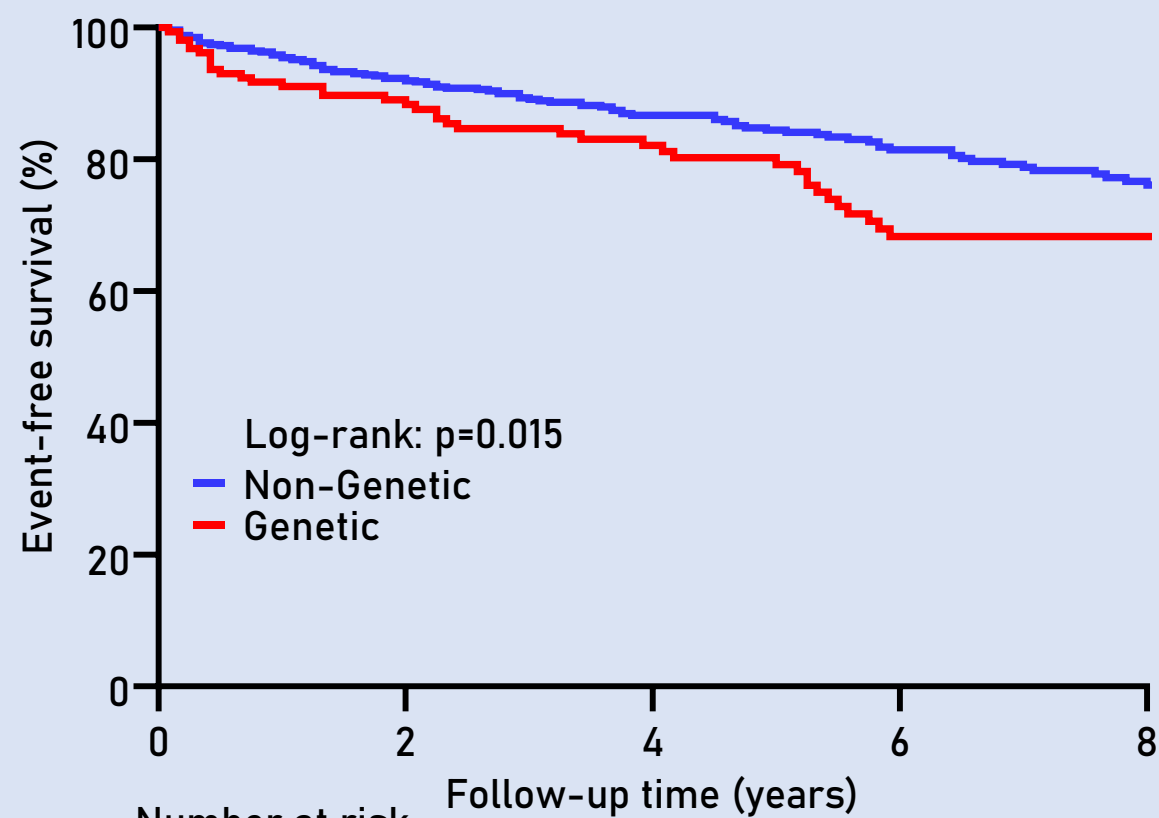
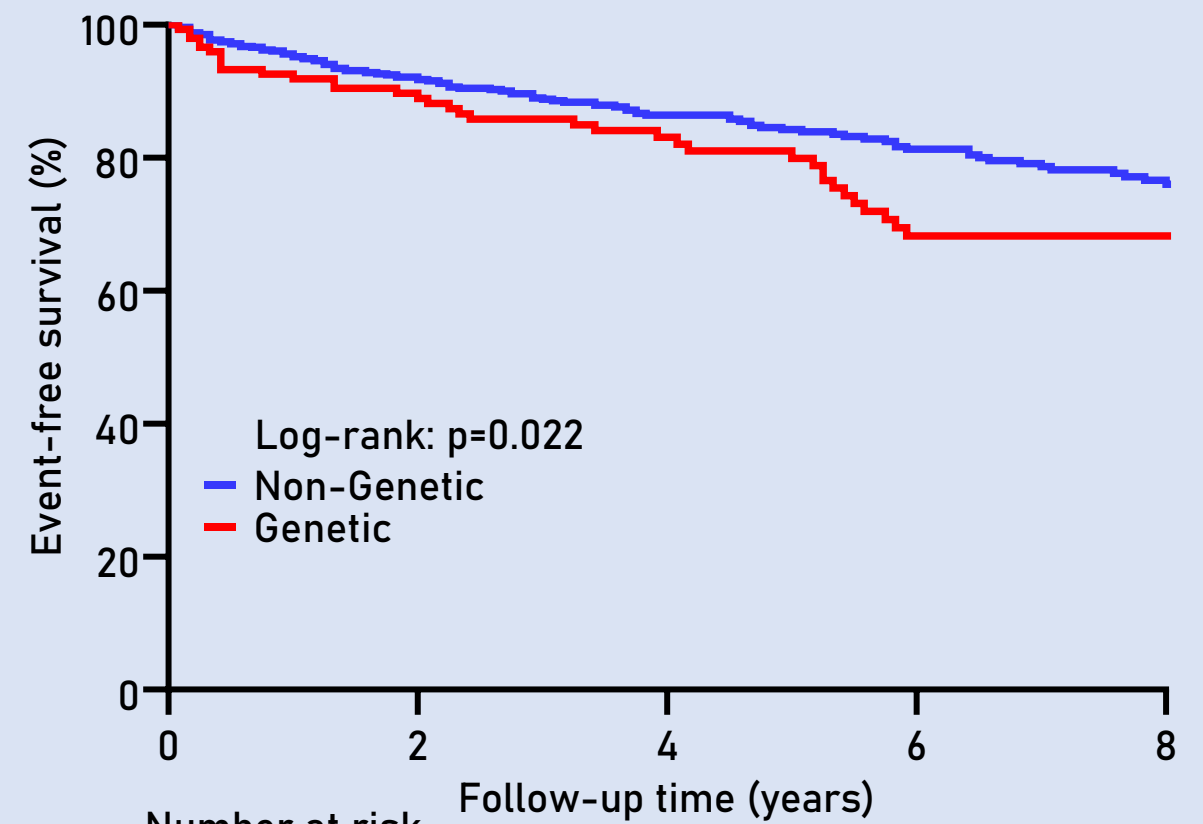


METHOD 1
Extended panel (n=48)
2015 ACMG/AMP standards



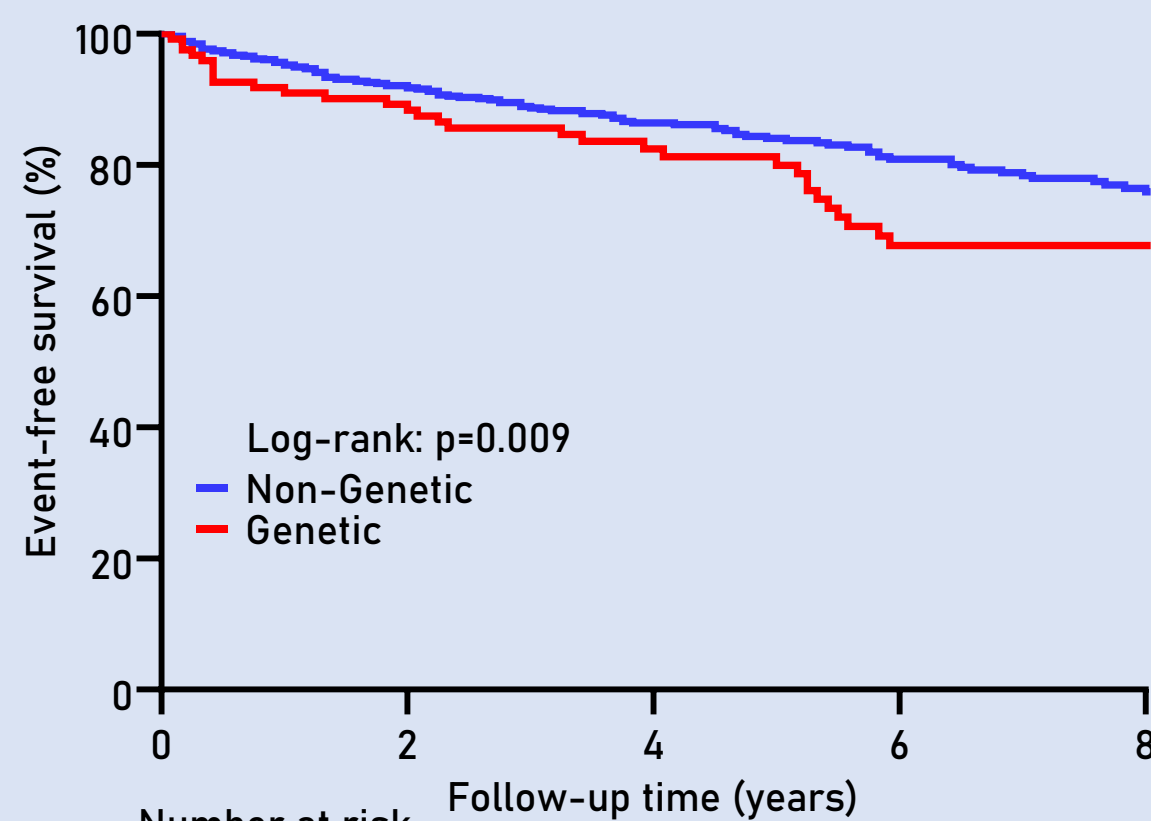
| Number at risk | | | | | |
|----------------|-----|-----|-----|-----|-----|
| | 0 | 2 | 4 | 6 | 8 |
| Genetic | 161 | 123 | 87 | 59 | 44 |
| Non-Genetic | 741 | 498 | 316 | 198 | 129 |

METHOD 2
Robust panel (n=14)
2015 ACMG/AMP standards



| Number at risk | | | | | |
|----------------|-----|-----|-----|-----|-----|
| | 0 | 2 | 4 | 6 | 8 |
| Genetic | 152 | 116 | 81 | 55 | 42 |
| Non-Genetic | 750 | 505 | 322 | 202 | 131 |

METHOD 3
Robust panel (n=14)
2020 ACMG/AMP adaptation for DCM



| Number at risk | | | | | |
|----------------|-----|-----|-----|-----|-----|
| | 0 | 2 | 4 | 6 | 8 |
| Genetic | 126 | 98 | 69 | 46 | 33 |
| Non-Genetic | 776 | 523 | 334 | 211 | 140 |