

Engineering the sign of circularly polarized emission in achiral polymer – chiral small molecule blends as a function of blend ratio

Li Wan,^{abc†‡} Jessica Wade,^{abc†} Xuhua Wang,^{ac} Alasdair J. Campbell^{ac§} and Matthew J. Fuchter^{bc*}

Dedication: To the memory of Professor Alasdair James Campbell.

Received 00th January 20xx,
Accepted 00th January 20xx

DOI: 10.1039/x0xx00000x

Circularly polarized organic light-emitting diodes (CP-OLEDs) that demonstrate both state-of-the-art efficiency and strongly circularly polarized (CP) electroluminescence have proved a considerable technical challenge. Furthermore, multiple factors – from film thickness to device structure – have been shown to influence the sign of the emitted CP light, independent of the handedness (absolute stereochemistry) of the chiral emitter. Here we report CP-OLEDs using a blend of poly(9,9-dioctylfluorene-*alt*-bithiophene) (F8T2) and a chiral small molecule additive (1-aza[6]helicene, aza[6]H). We demonstrate CP-OLEDs with an impressive electroluminescence dissymmetry (g_{EL}) > 0.3 and a current efficiency of 0.53 cd/A and brightness of 3023 cd/m². While at low aza[6]H loadings, F8T2 blends are consistent with previous observations of CP dissymmetric inversion as a function of film thickness/excitation mode, a higher loading of aza[6]H (~ 40 wt%) removes such dependencies while retaining excellent g factors. The materials disclosed will allow for further mechanistic studies of chiral polymeric materials and provide new opportunities for chiroptical optimisation in films and devices.

Introduction

The use of chiral organic semiconductors in optoelectronic devices has attracted considerable scientific interest. One reason for this is the potential to improve the energy efficiency of OLEDs: the direct emission of CP luminescence from the active layers of organic light emitting diodes (OLEDs) could

significantly reduce optical losses caused by the anti-glare filters used in state-of-the-art displays.¹ A key figure of merit for CP OLEDs is the degree of CP luminescence, which can be defined by the dissymmetry or g -factor (Eq. 1).

$$g = \frac{I_L - I_R}{\frac{1}{2}(I_L + I_R)} \quad (1)$$

In the pursuit of large g -factors and high quantum efficiencies, a wide range of CP emissive materials have been explored, including light emitting polymers (LEPs), phosphorescent metal complexes, thermally activated delayed fluorescent (TADF) emitters and perovskites.² Although triplet-harvesting TADF and phosphorescent emitters can achieve high device efficiencies, the luminescence g -factors are generally negligible ($g \approx 10^{-2}$ – 10^{-4})^{3–5}. On the other hand, LEPs display large g -factors (e.g. $g \approx 1.0$), and the potential to optimise device performance through device engineering and molecular design. The majority of reported chiral LEPs can be categorized into two groups: (1) LEPs with chiral side chains;^{6,7} and (2) blend systems consisting of device-optimized achiral LEPs and chiral non-emissive small molecule additives.^{8–11} Our previous studies have demonstrated that such LEPs have very large intrinsic chiroptical activity without the need for polymer alignment, partly due to the formation of chiral polymer phases with large inter-chain excitonic coupling.^{8,10,12}

To date, much of our work on achiral LEPs with chiral additives has concerned the use of poly(9,9-dioctylfluorene-*alt*-benzothiadiazole) (F8BT) blended with 1-aza[6]helicene (hereafter, aza[6]H). Through rigorous study of this key blend system, we have discovered a number of interesting trends with respect to the sign of the emitted CP light relative to the handedness/absolute stereochemistry of the chiral additive. These include luminescence dissymmetry factors that depend on film thickness,¹³ device architecture,⁸ and whether the CP emission is photo- or electro-luminescence. However, one parameter that has not been well explored is the influence of the LEP and chiral small molecule additive blend ratio and the

^a Department of Physics, Imperial College London, South Kensington Campus, London SW7 2AZ, United Kingdom.

^b Department of Chemistry and Molecular Sciences Research Hub, Imperial College London, White City Campus, 82 Wood Lane, London W12 0BZ, United Kingdom.

^c Centre for Processable Electronics, Imperial College London, South Kensington Campus, London SW7 2AZ, United Kingdom

§ Deceased

*m.fuchter@imperial.ac.uk

† These authors contributed to this work equally

‡ Present address: Department of Physics, Chemistry and Biology, Linköping University, Linköping 58183, Sweden

Electronic Supplementary Information (ESI) available: [details of any supplementary information available should be included here]. See DOI: 10.1039/x0xx00000x

PAPER

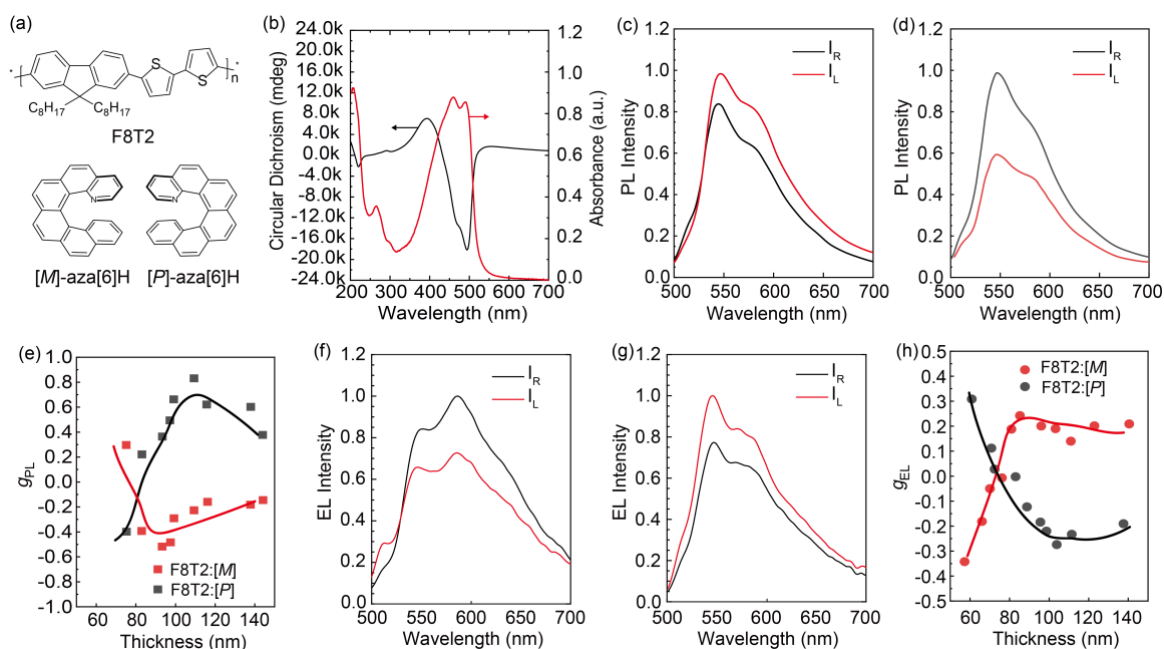


Fig. 1 (a) Molecular structure of F8T2 and [M]/[P]-aza[6]H; (b) Circular dichroism spectra and absorption spectra of 100 nm F8T2:10wt% [M]-aza[6]H film (c) 72 nm and (d) 100 nm F8T2:10wt% [M]-aza[6]H film CP PL measurement; (e) g_{PL} of the F8T2:10wt% [M]-aza[6]H film as a function of film thickness; CP EL measurement of F8T2:10wt% [M]-aza[6]H OLEDs with an active layer thickness of (f) 58 nm and (g) 100 nm; (h) g_{EL} as a function of film thickness. OLED device structure: ITO/PEDOT:PSS/TFB/F8T2:10wt% [M]-aza[6]H/Ca/Al

effect that such a ratio has on chiroptical activity and device performance.

In this study, we focus on an alternative polymer: poly(9,9-dioctylfluorene-alt-bithiophene) (F8T2, Fig. 1a), an archetypal semiconducting polymer that has been extensively studied as the (non-chiral) active layer in OLEDs,¹⁴ organic field-effect transistors,¹⁵ and organic solar cells.¹⁶ In separate work, it has been demonstrated that, in enantiopure chiral solvents, F8T2 can form helical $\pi - \pi$ aggregates which exhibit circular dichroism (CD) and CP photoluminescence (CP PL) ($|g_{abs}| \approx 0.1$, $|g_{PL}| \approx 0.065$).^{17,18} Here we show that F8T2:aza[6]H blends can be used as the active layer in CP-OLEDs and allow for the observation of fascinating dependencies in the g_{PL} and g_{EL} data on blend ratio. In contrast to the polymeric systems we have previously studied, F8T2:[P]/[M]-aza[6]H blends can tolerate a much higher aza[6]H loading, due to the similar HOMO levels of the two materials (~ 5.4 eV).¹⁹ Enabled by this potential for increased aza[6]H loading, we find that the sign of CP luminescence depends not only on active layer thickness, but on the wt% of aza[6]H. These intriguing results further highlight the fascinating chiroptical phenomena at play in achiral LEP – chiral additive blends and expands the repertoire of polymers compatible with this approach for effective polymer CP-OLEDs.

Results and Discussion

The optical absorption and CD spectra of F8T2:10 wt% aza[6]H blends have previously been reported by our group (Fig. 1b and Figure S25 in Ref¹⁰). Reflectance corrected F8T2: 10 wt% aza[6]H thin films exhibit a large thickness independent g_{abs} of ~ 1.3 ,¹⁰ which we have recently exploited as the active layers of CP photodetectors.²⁰ Here, we focus on the luminescence, and measure the CP emission of F8T2:aza[6]H for the first time. Thin film and device fabrication and all other experimental procedures are described in the **Experimental Details** and the Supporting Information (Fig. S1).

Following our previously optimized annealing process,¹⁰ the handedness of the CP PL of F8T2: 10 wt% aza[6]H is found to invert as film thickness is increased (Figs. 1c – 1e). For example, for F8T2:[M], left-handed (LH) CP PL is observed in thin (72 nm)

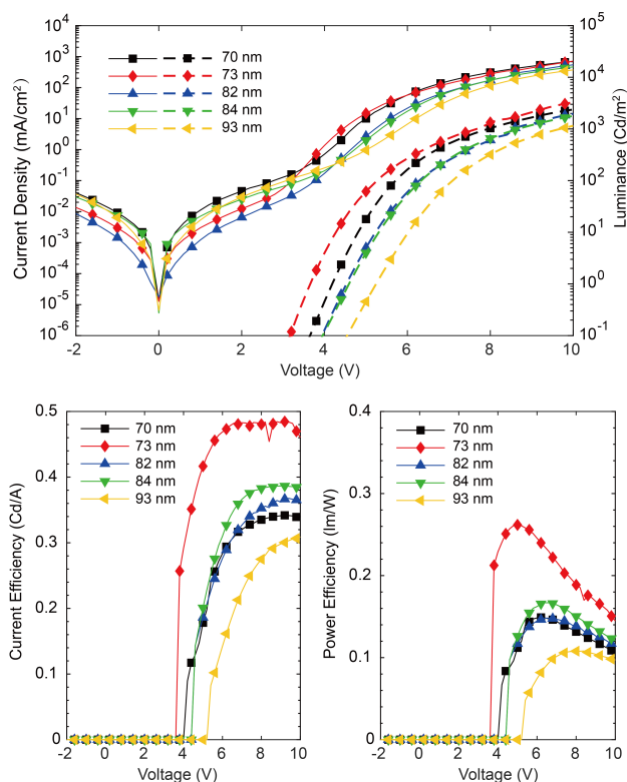


Fig. 2 J - V - L , CE and PE curves of F8T2:aza[6]H devices with increasing active layer thickness.

films, whilst right-handed (RH) CP PL is observed when film thickness > 100 nm (Figs. 1c and 1d). $[P]$ - and $[M]$ -aza[6]H blended F8T2 films exhibit a maximal g_{PL} ($\lambda = 546$ nm) = +0.62 and -0.52 for 100 nm thick films, respectively. Similar to the PL, we also observe an inversion of g_{EL} with increasing active layer thickness (Figs. 1f – 1h) in CP-OLEDs (ITO/ PEDOT:PSS/ TFB/ F8T2:aza[6]H/ Ca/ Al). Together with our previous data,^{11,13} the inversion of g_{PL} and g_{EL} as a function of film thickness has now been robustly observed in two polymeric systems, with crossover points at ~ 120 nm (F8BT¹³) and ~ 80 nm (F8T2), respectively (Fig. S2). It should also be highlighted that, for the range of active layers considered (60 – 140 nm), the g_{EL} and g_{PL} of F8T2:10 wt% aza[6]H are of opposite signs. This fascinating chiroptical phenomenon was also apparent in our inverted F8BT:10 wt% aza[6]H devices,⁷ and may be due to the complex processes involved with electronically generated excitons in chiral LEP phases. The consistency of this experimental observation in two different polymers suggests a more fundamental origin, which requires further investigation.

The J - V - L , current efficient (CE) and power efficiency (PE) of F8T2:10 wt% aza[6]H CP OLEDs with various active layer thickness are shown in Fig.2. This thickness range covers the crossover points of g_{PL} and g_{EL} (Figs. 1c and 1f, see absorption and CD spectra for this range in Fig 4a and 4c). Due to the known low PLQE of F8T2,^{14,19} the turn-on voltage V_{on} ranged from 3.5 V to 5.4 V (at 1.0 cd/m^2) and brightness from 1120 cd/m^2 to 3200 cd/m^2 (at 10V). We observed the best device

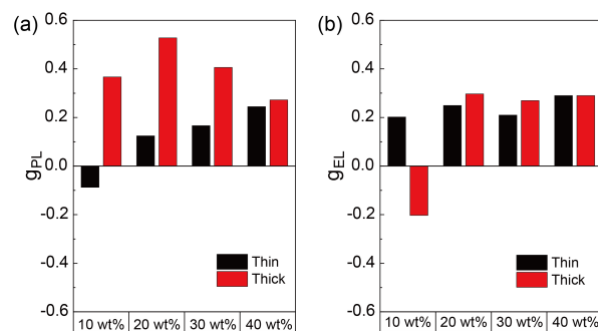


Fig.3 (a) g_{PL} and (b) g_{EL} of thin (~ 60 nm) and thick (~ 100 nm) F8T2:[P]-aza[6]H films and devices

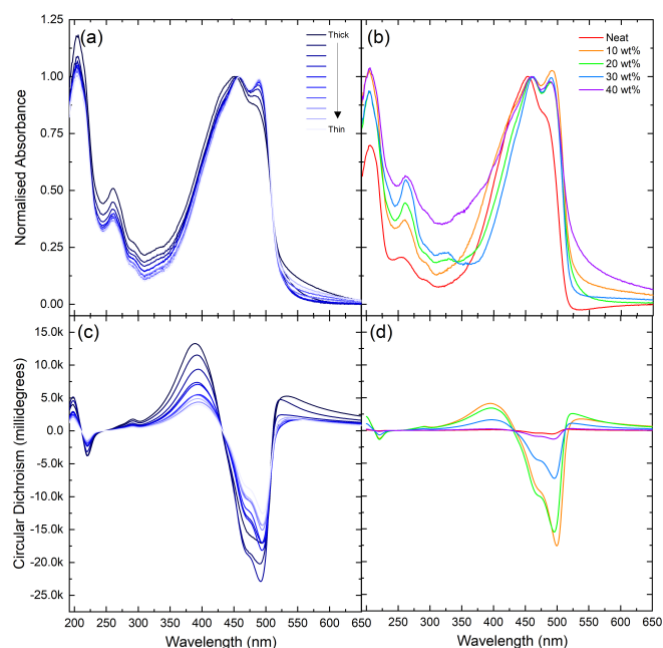


Fig. 4 (a, b) Absorption and (c, d) circular dichroism spectra for (a, d) F8T2:10wt% $[M]$ -aza[6]H blends as a function of film thickness and (b, d) 100 nm thick F8T2: $[M]$ -aza[6]H blends as a function of aza[6]H loading ratio.

performance with the thickness of 73 nm in terms of the efficiency (CE = 0.48 cd/A) and luminance (3200 cd/m^2). Upon further evaluation of the F8T2:aza[6]H blends, it became apparent that F8T2 allowed for increased aza[6]H loading than F8BT or PFO. Previously, we found that increasing the wt% of aza[6]H $> 10\%$ in F8BT:aza[6]H blends resulted in a dramatic decrease of brightness, which renders it challenging to reliably measure g_{EL} .^{11,13} Given the similar HOMO levels of F8T2 and aza[6]H (~ 5.4 eV), a wider range of blend ratios can be studied without aza[6]H acting as a hole trap. We therefore conducted a more extensive inspection of the impact on the relative wt% of the blend components (LEP, aza[6]H) on the chiroptical properties for the first time. The wt% aza[6]H was varied from 10 wt% to 40 wt% (Fig 4). We note that ratios higher than 40 wt% were not possible due to the formation of crystalline aza[6]H domains, resulting in poor morphology and device operation. As shown in Fig. 4b and S3, the electronic transitions of aza[6]H ($\lambda = 350$ nm) become visible in the UV-Vis spectra of high wt% blends. For aza[6]H > 20 wt%, polymer emission in the

PL spectrum (Fig. S4) is also blue-shifted, which we suggest is caused by disruption of polymer chain packing by excess aza[6]H. This, in turn, reduces the effective conjugation length and results in higher energy emission.^{21,22} Importantly, the dissymmetry inversion as a

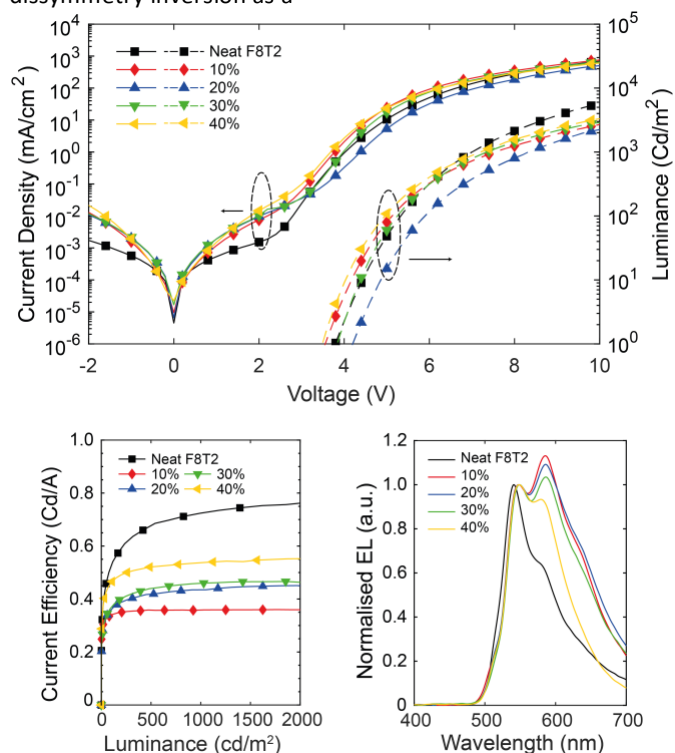


Fig.5 J-V-L, efficiency curves and EL of F8T2:[P]-aza[6]H 60 nm devices with increasing blending ratios of [P]-aza[6]H.

function of active layer thickness is no longer observed at the maximum aza[6]H loading (40 wt%): g_{PL} and g_{EL} have the same sign ($g \sim 0.3$, Fig. 3). Furthermore, the ellipticity and strength of the Cotton bands of the lowest energy electronic transition decreases as aza[6]H loading is increased (Fig. 4d). To rigorously assess the thickness dependence of CP EL it is essential to combine optical modelling with device engineering (e.g. modifying the electrode reflectivity, tuning the position of the recombination zone), as has been previously demonstrated.^{13,23,24}

The device efficiency of F8T2:[P]-aza[6]H CP OLEDs with thin active layers (60 nm, Fig.5) increases with aza[6]H wt%. In fact, the 40 wt% aza[6]H device exhibits the best device performance (CE = 0.53 cd/A, L = 3020 cd/m² at 10 V) of any aza[6]H blend devices considered here. This impressive device performance indicates that by carefully considering the energy levels of both the achiral polymer and chiral small molecule additive, CP OLEDs with both high g_{EL} and improved device performance can be realized.

Taken together, this study further confirms that multiple factors influence the sign of the emitted CP light for these materials, independent of the handedness (absolute stereochemistry) of the chiral (polymer) emitter. As described by Duong and co-workers, the coupling of excited states in conjugated LEPs results in degenerate S_1 states that give rise to CP PL.¹⁸ This implies that in the majority of cases, the sign of CP PL should be consistent with the sign of the CD. However, our previously

reported CP-OLEDs,^{8,9,13} and this work, indicate that film thickness, device architecture and active layer composition also influence the CP emission. The oppositely handed g_{PL} and g_{EL} in F8T2:10 wt% aza[6]H blends also indicate that the mechanisms that underpin the strong CP

EL in LEPs are not the same as those that can be used to rationalize the CP PL.

We further show that CP dissymmetry inversion, as a function of active layer thickness, is no longer observed at increased aza[6]H loadings. We attribute this outcome to an increase in the proportion of aza[6]H in the blend, which has a significant effect on polymer structure and packing. Ultimately, it is the structural of the chiral polymeric phase that determines such chiroptical behaviour^{8,10,12} and higher aza[6]H loadings clearly have a strong influence on this. Despite the effect on polymer morphology, very respectable levels of g_{PL} and g_{EL} are still achieved (~ 0.3) at high aza[6]H loadings.

Conclusions

Chiral emitters based on LEPs continue to achieve luminescence dissymmetries orders of magnitudes greater than other systems (e.g. $g \approx 1.0$). In particular, achiral LEP – chiral small molecule additive blends have presented a simple approach to generate strong CP luminescence of tunable handedness with impressive device performances and many interesting chiroptical phenomena have already been reported. In this study, we have expanded the number of polymers suited to such an approach, through the use of the LEP F8T2. F8T2 blends with low aza[6]H loading further confirm previous observations that highly dissymmetric CP luminescence can be achieved, where the sign of the CP light is thickness dependent and dependent on whether the excitons are optically or electronically generated within the active layer. The same is not true for high wt% aza[6]H blends however, where the overall handedness of the emitted light depends solely on the absolute stereochemistry of the active layer (i.e. F8T2:40 wt% [P]-aza[6]H thin films $g_{EL} \sim +0.3$, thick films $g_{EL} \sim +0.3$). It is evident that further experimental (for example, evaluating how excited state populations are impacted by drift currents through chiral polymer phases) and theoretical work is required to fully understand and optimize these chiral LEP systems and the CP handedness dependencies and such studies are ongoing in our group.

Materials and methods

Materials: 1-aza[6]helicene was prepared as previously reported and separated using preparative chiral HPLC. F8T2 was provided by Sumitomo Chemical Co., Ltd. and used without further purification.

Solution Preparation and thin film deposition: F8T2 was dissolved with a variety of mixing ratios of aza[6]helicene (0, 10 wt%, 20 wt%, 30 wt% and 40 wt%) in toluene (15 mg/mL). Thin films of various thickness are controlled by spin speed (1200 rpm \sim 5000 rpm) and deposited on fused silica substrates. All annealed samples were annealed for 10 min under a nitrogen atmosphere (glovebox, < 0.1 ppm H₂O, < 0.1 ppm O₂). The film thicknesses of all films were measured using a Dektak 150 surface profiler.

OLED Fabrication and characterisation: Prepatterned ITO substrates (company) were rinsed in an ultrasonic bath with acetone, isopropyl alcohol (IPA) and Hellmanex III (company) and deionized water before deposition of poly(3,4-ethylenedioxythiophene):poly(styrenesulfonate) (PEDOT:PSS) (H.C. Starck GmbH) (55 nm). Then, aza[6]helicene blended F8T2 with varying thickness was spin-coated (1200 rpm ~ 5000 rpm) onto PEDOT:PSS. Afterwards, a 25 nm Ca layer, capped by a 100 nm Al layer was thermally evaporated onto the organic layer under vacuum level of 1×10^{-7} mbar. J-V-L characterization (pixel area = 0.045 cm^2) was performed using a Keithley 2400 and Konica Minolta LS-110 Luminance Meter via a computer controlled Labview program. EL spectra were measured using an Ocean Optics USB 2000 charge-coupled device spectrophotometer.

Photophysical and Morphology Characterisation: Absorption and PL spectra of the blends at various thickness and blending ratios were measured by a Cary 300 UV-Vis spectrometer (Agilent Technologies) and a FluoroMax-3 (Horiba Jobin Yvon), respectively. Left-handed and right-handed CP PL spectra were acquired using a linear polarizer and quarter-wave plate prior to a FluoroMax-3 spectrometer. The background introduced by the polarizer, the quarter-wave plate and the silica substrates were corrected by using the CP PL results from a blank sample. The dissymmetry factor g in the CP PL spectra was calculated from the equation $g = 2(I_L - I_R)/(I_L + I_R)$, $|g| \leq 2$. I_L and I_R are the left-handed and right-handed emission intensities respectively. A similar method was used to analyse the CP EL spectra. EL spectra from the OLED was recorded using an Ocean Optics USB 2000 charge-coupled spectrophotometer.

Author Contributions

L.W and J.W contributed equally to this work.

Acknowledgement

This work was supported by EPSRC research grants EP/P000525/1, EP/L016702/1 and EP/R00188X/1. We would like to thank the Diamond B23 beamline for assistance with chiroptical measurements.

Conflicts of interest

The authors declare the following competing financial interest(s): M. Fuchter is an inventor on a patent concerning chiral blend materials (WO2014016611).

Notes and references

- 1 R. Singh, K. N. Narayanan Unni, A. Solanki and Deepak, *Opt. Mater.*, 2012, **34**, 716–723.
- 2 D.-W. W. Zhang, M. Li and C.-F. F. Chen, *Chem. Soc. Rev.*, 2020, **49**, 1331–1343.
- 3 M. Li, Y. Wang, D. Zhang, L. Duan and C. Chen, *Angew. Chemie Int. Ed.*, 2020, **59**, 3500–3504.

- 4 Z. Wu, H. Han, Z. Yan, X. Luo, Y. Wang, Y. Zheng, J. Zuo and Y. Pan, *Adv. Mater.*, 2019, **31**, 1900524.
- 5 X. Shang, L. Wan, L. Wang, F. Gao and H. Li, *J. Mater. Chem. C*, DOI:10.1039/D1TC04163K.
- 6 D. Di Nuzzo, C. Kulkarni, B. Zhao, E. Smolinsky, F. Tassinari, S. C. J. Meskers, R. Naaman, E. W. Meijer and R. H. Friend, *ACS Nano*, 2017, **11**, 12713–12722.
- 7 J. Gilot, R. Abbel, G. Lakhwani, E. W. Meijer, A. P. H. J. H. J. Schenning and S. C. J. J. Meskers, *Adv. Mater.*, 2010, **22**, E131–E134.
- 8 L. Wan, J. Wade, X. Shi, S. Xu, M. J. Fuchter and A. J. Campbell, *ACS Appl. Mater. Interfaces*, 2020, **12**, 39471–39478.
- 9 L. Wan, X. Shi, J. Wade, A. J. Campbell and M. J. Fuchter, *Adv. Opt. Mater.*, 2021, **9**, 2100066.
- 10 J. Wade, J. N. Hilfiker, J. R. Brandt, L. Liirò-Peluso, L. Wan, X. Shi, F. Salerno, S. T. J. J. Ryan, S. Schöche, O. Arteaga, T. Jávorfí, G. Siligardi, C. Wang, D. B. Amabilino, P. H. Beton, A. J. Campbell and M. J. Fuchter, *Nat. Commun.*, 2020, **11**, 6137.
- 11 Y. Yang, R. C. Da Costa, D. M. Smilgies, A. J. Campbell and M. J. Fuchter, *Adv. Mater.*, 2013, **25**, 2624–2628.
- 12 B. Laidlaw, J. Eng, J. Wade, X. Shi, F. Salerno, M. J. Fuchter and T. J. Penfold, *Chem. Commun.*, 2021, **57**, 9914–9917.
- 13 L. Wan, J. Wade, F. Salerno, O. Arteaga, B. Laidlaw, X. Wang, T. Penfold, M. J. Fuchter and A. J. Campbell, *ACS Nano*, 2019, **13**, 8099–8105.
- 14 P. A. Levermore, R. Jin, X. Wang, J. C. de Mello and D. D. C. Bradley, *Adv. Funct. Mater.*, 2009, **19**, 950–957.
- 15 J. Veres, S. D. Ogier, S. W. Leeming, D. C. Cupertino and S. M. Khaffaf, *Adv. Funct. Mater.*, 2003, **13**, 199–204.
- 16 J. H. Huang, C. Y. Yang, Z. Y. Ho, D. Kekuda, M. C. Wu, F. C. Chien, P. Chen, C. W. Chu and K. C. Ho, *Org. Electron.*, 2009, **10**, 27–33.
- 17 Y. Kawagoe, M. Fujiki and Y. Nakano, *New J. Chem.*, 2010, **34**, 637.
- 18 S. T. Duong and M. Fujiki, *Polym. Chem.*, 2017, **8**, 4673–4679.
- 19 R. Jin, P. a Levermore, J. Huang, X. Wang, D. D. C. Bradley and J. C. deMello, *Phys. Chem. Chem. Phys.*, 2009, **11**, 3455–3462.
- 20 M. D. Ward, J. Wade, X. Shi, J. Nelson, A. J. Campbell and M. J. Fuchter, *Adv. Opt. Mater.*, 2021, 2101044.
- 21 F. C. Spano and C. Silva, *Annu. Rev. Phys. Chem.*, 2014, **65**, 477–500.
- 22 F. C. Spano, *Acc. Chem. Res.*, 2010, **43**, 429–439.
- 23 F. Zinna, M. Pasini, F. Galeotti, C. Botta, L. Di Bari and U. Giovanella, *Adv. Funct. Mater.*, 2017, **27**, 1603719.
- 24 D.-M. Lee, J.-W. Song, Y.-J. Lee, C.-J. Yu and J.-H. Kim, *Adv. Mater.*, 2017, **29**, 1700907.