

Figure E1

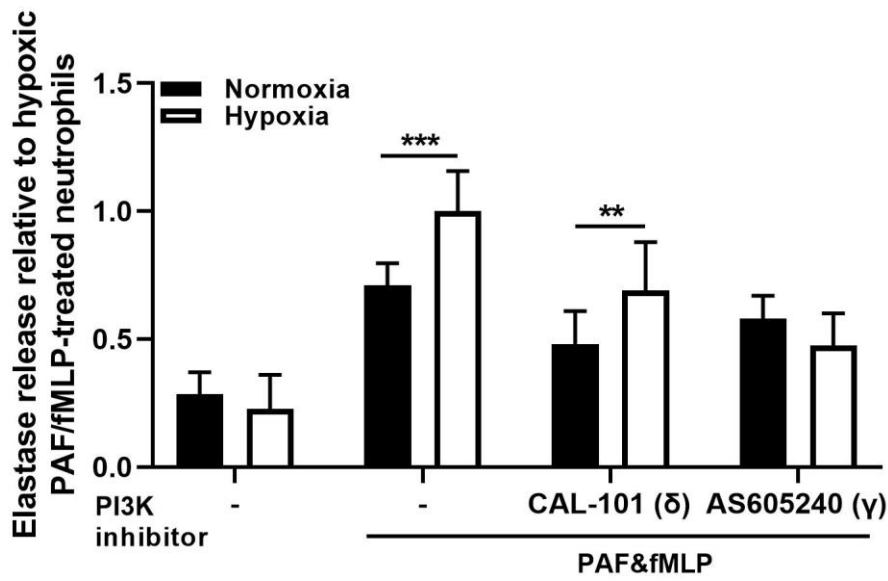


Figure E2

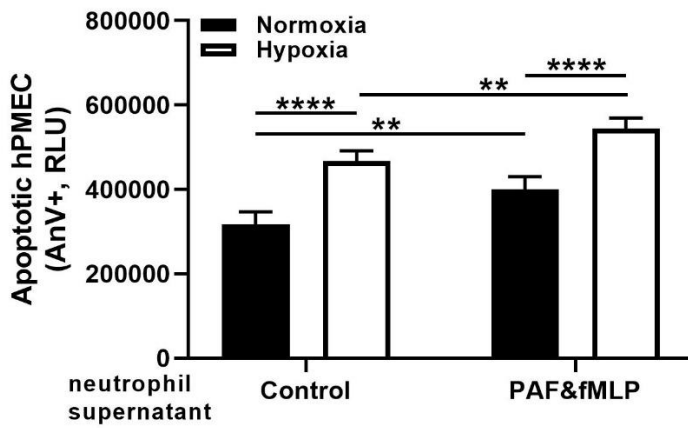


Figure E3

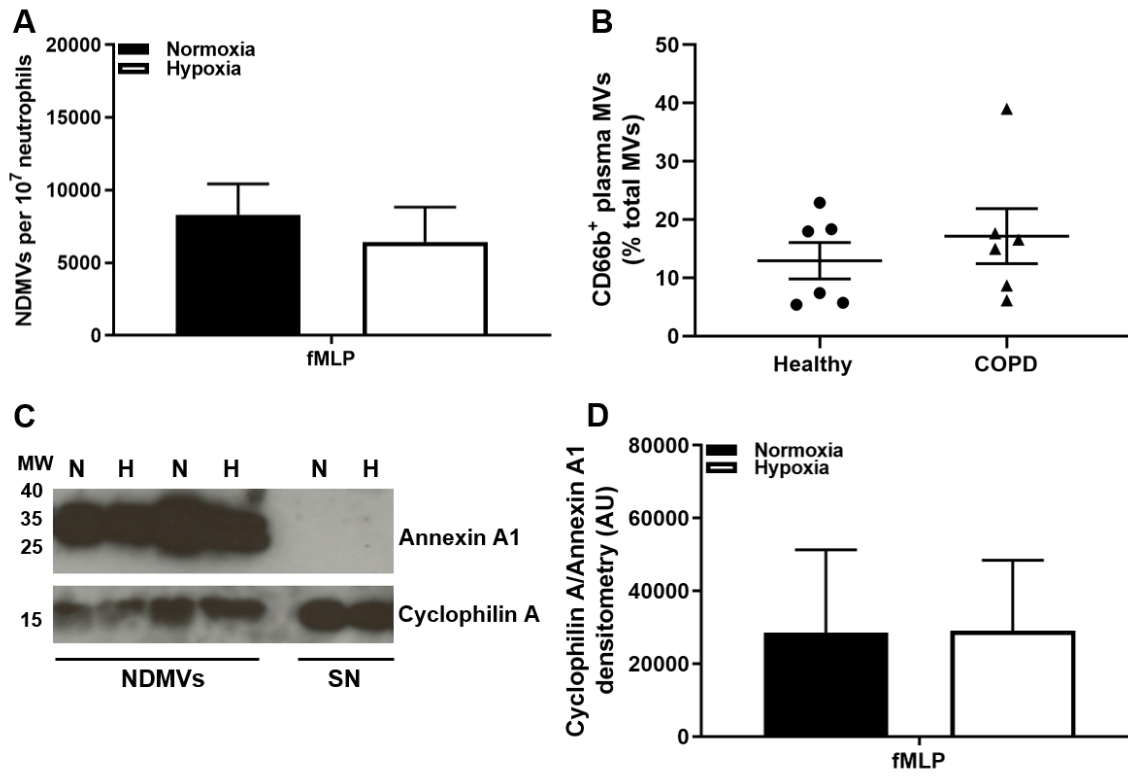


Figure E4

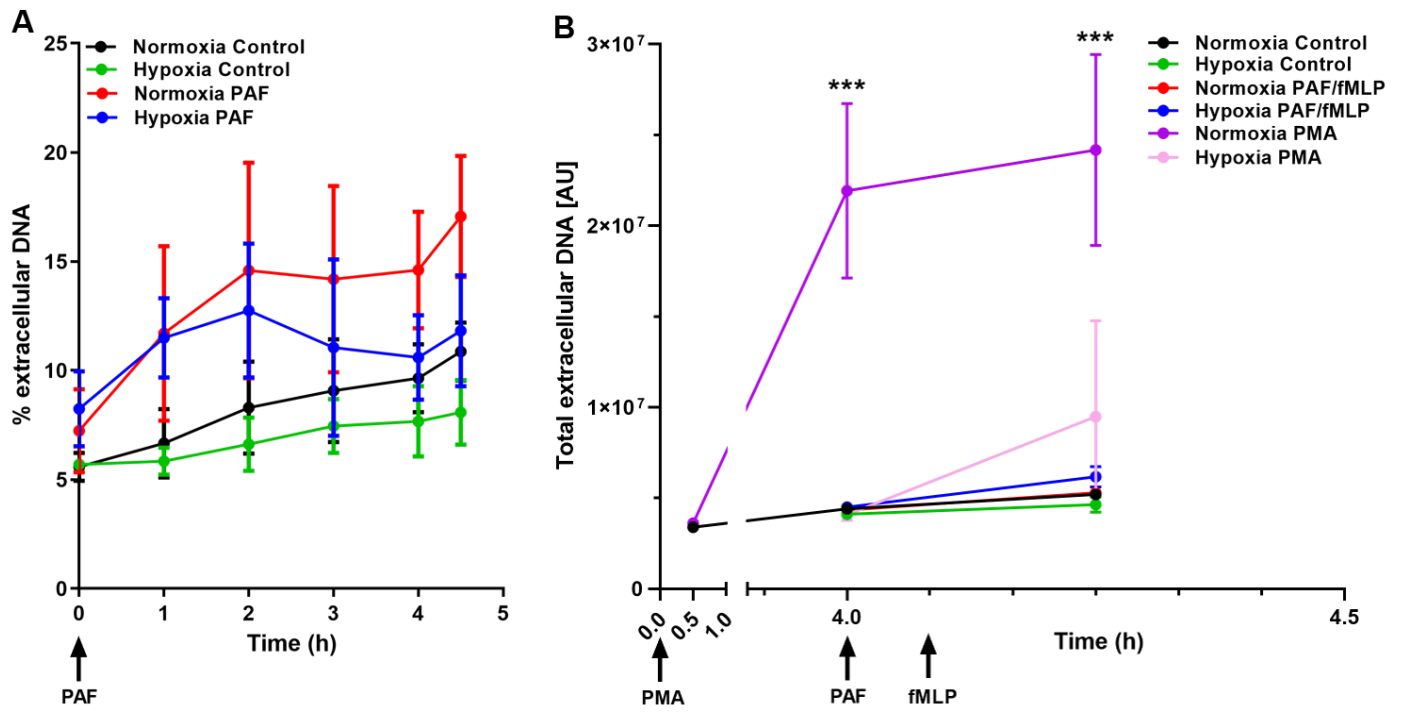


Figure E5

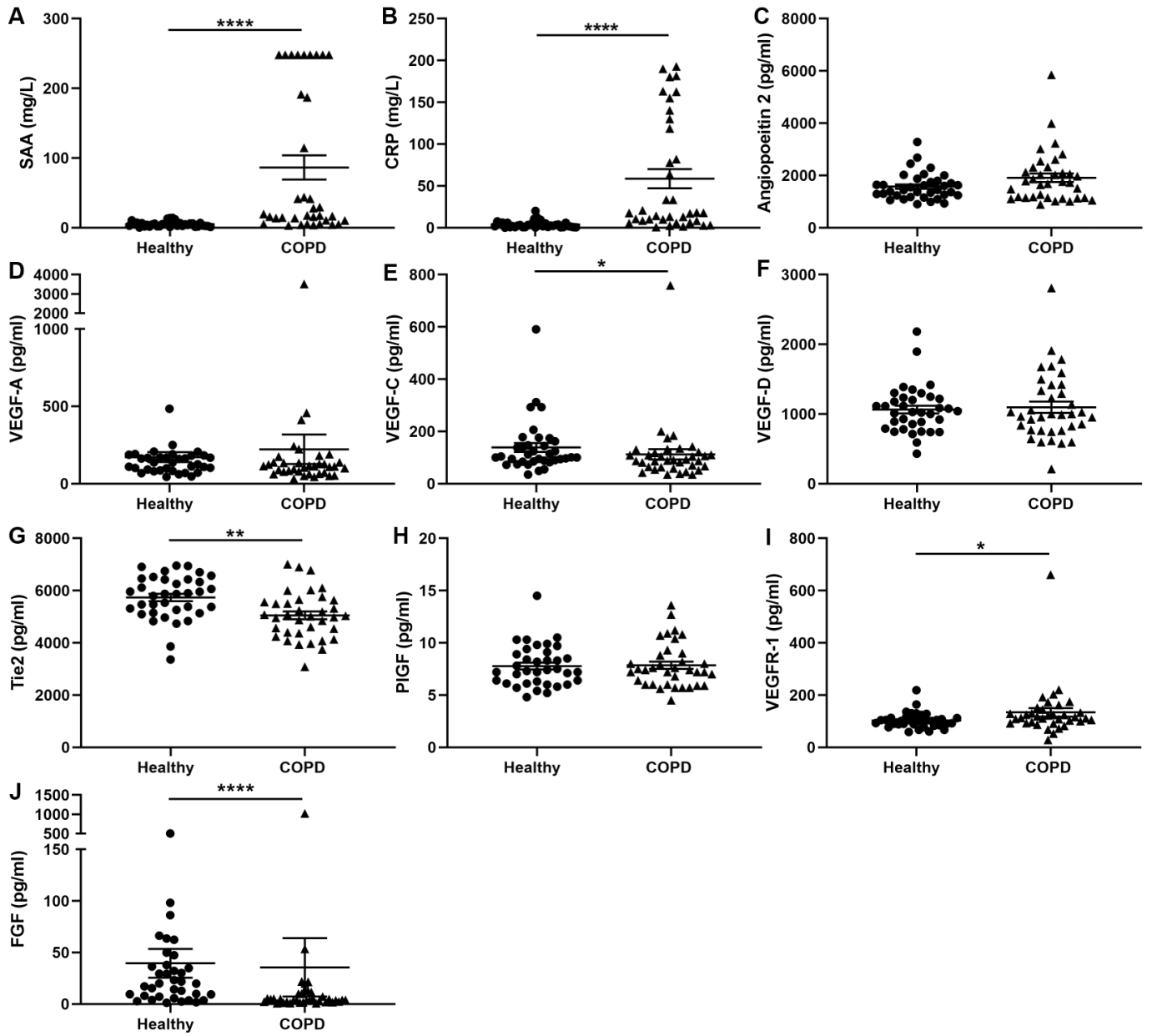


Table E1

Cohort 1	Healthy Donor N=14	COPD patient N=12
Age – mean year (SD)	66.07 (5.28)	70.74 (6.85)
Male sex – no. (%)	7 (50)	6 (50)
Smoking history – mean pack year (SD)	4.04 (11.33)	58.27 (32.95)
Current smoker – no. (%)	0 (0)	3 (25)
Current no. of cigarettes/day – mean (SD)	0 (0)	N=3 3 (2.51)
WCC – mean (SD)	Not tested	10.15 (4.46)
Neutrophil count – mean (SD)		8.01 (4.29)
CRP – mean (SD)		20.16 (22.0)
O ₂ saturation on room air on admission – mean % (SD)	Not recorded	86.3 (4.55)
O ₂ saturation at time of venepuncture – mean % (SD)		91.75 (2.67)

Table E2

Cohort 2	COPD patient N=6
Age – mean year (SD)	75 (6.5)
Male sex – no. (%)	3 (50)
FEV1 % predicted (SD) (* spirometry within past year in the stable state)	53.17 (17.09)
FEV1/FVC* (SD)	49.61 (16.8)
Smoking history – mean pack year (SD)	45 (27.3)
Current smoker – no. (%)	1 (16.7)
Current no. of cigarettes/day	N = 1 10
O ₂ saturation on room air at sampling – mean % (SD)	95.67 (2.42)
Timing of most recent exacerbation prior to sampling – mean months (SD)	3.4 (4.3)

Table E3

Cohort 3	Healthy Donor N=32	COPD patient N=32
Age – mean year (SD)	64.63 (8.80)	66.7 (7.03)
Male sex – no. (%)	20 (62.50)	21 (65.60)
FEV1 % predicted (SD) (* spirometry within one year of admission in the stable state)	109.99 (12.19)	70.80 (20.39)*
FEV1/FVC* (SD)	79.67 (5.37)	59.49 (12.64)*
Smoking history – mean pack year (SD)	12.13 (6.36)	28.74 (17.28)
Current smoker – no. (%)	10 (31.25)	13 (40.63)
Current no. of cigarettes/day – mean (SD)	N = 10 6.4 (1.96)	N = 13 11.61 (3.52)
O ₂ saturation on room air on admission – mean % (SD)	95.53 (2.42)	89.23 (4.65)

Table E4

Cohort 1 comorbidities	Healthy Donor (total N=14) number of donors (%)	COPD patient (total (N=7) number of donors (%)
Type 2 diabetes	1 (7)	4 (57)
Hypertension	5 (36)	3 (43)
Ischaemic heart disease	1 (7)	2 (29)
Previous venous thromboembolism	0 (0)	2 (29)
Arrhythmia	0 (0)	2 (29)
Obstructive sleep apnoea	0 (0)	2 (29)
Osteoporosis	0 (0)	2 (29)
Idiopathic angioedema	0 (0)	1 (14)
Obesity	0 (0)	1 (14)
Hypothyroidism	1 (7)	1 (14)
Alcohol excess	0 (0)	1 (14)
Chronic kidney disease	0 (0)	1 (14)
Motor neurone disease	0 (0)	1 (14)
Hypercholesterolaemia	4 (29)	0 (0)
Gastro-oesophageal reflux disease	3 (21)	0 (0)
Benign prostatic hyperplasia	2 (14)	0 (0)
Hyperthyroidism	1 (7)	0 (0)
Gout	1 (7)	0 (0)
Migraine	1 (7)	0 (0)