



Density of outdoor food and beverage advertising around gathering place for children and adolescent in East Java, Indonesia

Septa Indra Puspikawati^{1,*} , Desak Made Sintha Kurnia Dewi², Erni Astutik³, Dian Kusuma⁴, Soenarnatalina Melaniani⁵ and Susy Katikana Sebayang²

¹Research Group for Health and Wellbeing of Women and Children, Department of Nutrition, Faculty of Public Health, Universitas Airlangga, Banyuwangi Campus, Banyuwangi 68418, Indonesia: ²Research Group for Health and Wellbeing of Women and Children, Department of Biostatistics and Population Studies, Faculty of Public Health, Universitas Airlangga, Banyuwangi Campus, Banyuwangi, Indonesia: ³Research Group for Health and Wellbeing of Women and Children, Department of Epidemiology, Faculty of Public Health, Universitas Airlangga, Surabaya, Indonesia: ⁴Center for Health Economics & Policy Innovation, Imperial College Business School, London, UK: ⁵Research Group for Health and Wellbeing of Women and Children, Department of Biostatistics and Population Studies, Faculty of Public Health, Universitas Airlangga, Surabaya, Indonesia

Submitted 22 May 2020: Final revision received 18 November 2020: Accepted 27 November 2020: First published online 2 December 2020

Abstract

Objective: To survey outdoor food and beverage advertisements ('F&B adverts') for products that may be a risk factor for obesity, diabetes and CVD located in the vicinity of gathering places for children and adolescents.

Design: We recorded the GPS coordinates of all F&B adverts visible from the streets at distances of 0–100, 100–300 and 300–500 m from facilities often used by children and adolescents. Those for unhealthy foods and beverages were identified. The density (number per square kilometre) of such advertisements was calculated and evaluated using hotspot analysis.

Setting: The sub-districts Mulyorejo and Sukolilo in Surabaya city and the sub-districts Banyuwangi and Giri in Banyuwangi District, Indonesia.

Participants: None.

Results: The proportion of all outdoor advertisements that were F&B adverts was slightly higher in Banyuwangi than in Surabaya. Of the 570 F&B adverts recorded in Banyuwangi, 227 (39.8%) and 273 (47.9%) were for unhealthy foods and beverages, respectively. Of 960 F&B adverts in Surabaya, 271 (28.2%) and 445 (46.3%) were for unhealthy foods and beverages. In both regions, F&B advert density increased near gathering places for children and adolescents; all recreational areas had at least one set of advertisements for unhealthy beverages and food at 100–300 and 300–500 m. Both regions had one hotspot with significantly high numbers of unhealthy advertisements; Banyuwangi had one cold spot with a significantly low number of healthy advertisements.

Conclusion: Regulations to control advertisements for unhealthy foods and beverages in areas frequented by children and adolescents are urgently needed.

Keywords
Food & beverage
Outdoor advertisement
Children & adolescents
Non-communicable diseases
Spatial analysis

Indonesia has successfully reduced the incidence of infectious diseases, but non-communicable diseases such as diabetes, CVD, and obesity continue to increase⁽¹⁾. The prevalence of obesity in children and adolescent in Indonesia is currently 9.2 and 8.8%⁽²⁾. Between 2013 and 2018, there were increases in the prevalence of hypertension among adolescents from 8.7% to 13.22%, of stroke

from 0.2 to 0.6/1000, and the prevalence of diabetes remains the same, which is 0.1%^(2,3).

East Java is included in the top 10 of 34 provinces in Indonesia with the highest prevalence of overweight children and people with cancer, stroke, diabetes mellitus and hypertension⁽²⁾. Between 2013 and 2018, the proportion of the population undertaking lower levels of physical activity

*Corresponding author: Email septaindra@fkm.unair.ac.id

© The Author(s), 2020. Published by Cambridge University Press on behalf of The Nutrition Society



in East Java continued to increase from 21.3% to 26.5%^(2,3). More than 90% of the population of East Java consume less than the recommended standard of five portions of vegetables and fruits a day. In addition, as many as 57% of people in East Java consume sweetened drinks more than once a day^(2,3).

Many studies have considered various risk factors for obesity, diabetes and CVD. One factor that has been associated with these diseases but received less attention is exposure to food and beverage advertising especially outdoor advertising^(4,5). Outdoor advertising, in particular, works by integrating branded messages into people's daily activities and the cultural landscape, as well as serving as an immediate cue for purchase when viewed in connection with food stores⁽⁶⁾.

Studies of outdoor food advertisements conducted in Australia⁽⁷⁾, the USA⁽⁸⁾, northern England⁽⁹⁾ and New Zealand⁽¹⁰⁾ consistently reported that most outdoor food advertisements were for unhealthy food or drinks. These advertisements varied according to neighbourhood characteristics. For example, advertisements for unhealthy foods were often found around schools in Australia and New Zealand^(7,10). Children and adolescents are exposed to unhealthy food advertisements not only around schools but also in public places where they gather, such as recreational parks, places of worship and playgrounds⁽¹¹⁾.

Outdoor advertising creates repeated exposure for children as they visit these places frequently⁽¹²⁾. The repeated exposures build product and brand familiarity and influence children's desire to purchase and consume the advertised products and brands⁽⁴⁾. Previous research on alcohol advertising has shown that increased exposure to alcohol advertisements around schools influences adolescent intention to use alcohol⁽¹³⁾. A similar process can occur for food and beverage advertising, linked to a range of effects that ultimately lead to poor diet and health outcomes⁽¹⁴⁾.

A survey in ten major cities in Indonesia shows that Indonesians spend 1 h and 48 min outdoor daily and are exposed to outdoor advertisement at least ten times a week, creating the repeated exposures needed to stimulate purchase⁽¹⁵⁾. When started at young age, purchase behaviour of unhealthy products can develop into a long-term habits that can increase the risk of obesity, diabetes and CVD⁽¹⁶⁾.

However, despite the increasing prevalence of obesity, diabetes and CVD and the omnipresent of Food and Beverage advertisement (F&B adverts), there is currently no information available on the density of F&B adverts in Indonesia and their placement, let alone details of whether the advertisements were of healthy or unhealthy products. At the policy level, only alcohol beverages advertisement is regulated in several districts and there is only one known district (Banyuwangi District) of the 514 districts and cities in this country that prohibits any advertisement 25 m from

schools⁽¹⁷⁾. To advocate for a policy change, studies on F&B advertisement are needed.

Therefore, the aim of this study was to survey areas around gathering places for children and adolescents to identify outdoor F&B adverts that may be risk factors for obesity, diabetes and CVD, in order to provide evidence for policy making. Different from other studies that observe advertisements a certain distance from schools^(12,18), to enable stronger evidence for policy, this study surveyed all types of advertisements in the total area of the study locations and calculated their distance from schools and other types of facilities used by children and adolescents.

Methods

Survey locations

The current study was conducted in July–September 2019 in Surabaya, the capital city of East Java to represent an urban location and Banyuwangi District, a thriving ecotourism district to represent a more rural setting. We first selected a sub-district with the highest population, a high density of school and high possibility of implementing policy change in Banyuwangi District. Subsequently, we chose a sub-district in Surabaya City with a population similar to that of Banyuwangi and with high number of schools. We then selected a contiguous sub-district for each for the selected sub-districts in Banyuwangi and Surabaya. This resulted in four sub-districts: Mulyorejo and Sukolilo sub-district of Surabaya City and Banyuwangi and Giri sub-district of Banyuwangi District.

Data collection

The surveys were performed by teams of two trained enumerators, each with at least 1 year of study experience at the tertiary level in the health sector. There were four teams in Banyuwangi and five teams in Surabaya. The data were collected using the KoBoCollect application on an Android-based mobile phone⁽¹⁹⁾. The enumerators walked or rode a motorbike around all the roads and alleys in the study location and recorded the GPS coordinates and photographs of the F&B adverts and the facilities used by children and adolescents. A quality control team revisited at random selected GPS coordinates sent from the mobile application into the server. This was to ensure that the location and information entered into the server were correct.

We surveyed all types of F&B adverts that were visible from all the roads and alleys in the study location including banners, posters, billboards, video advertisements, outdoor advertisements on shops and stalls, stickers, merchandise and any other items containing food and beverage advertisement. The facilities used by children and adolescents included schools (non-formal education, primary schools, middle schools, high schools and higher education



level); sports centres; places of worship; recreation centres and other gathering sites (playgrounds, Quranic schools, child-care centres, kindergartens and playgroups). The selections of facilities were made based on list of children and adolescents facilities listed in regulations limiting advertisement and regulations for tobacco advertisement and sales zones.

Categorisation of the advertisements

We checked nutritional values of the product being advertised from the nutritional information available on the product package or from the product food labelling available in the Internet. To classify a product as healthy and unhealthy, we cross checked the nutritional values against the Indonesian nutritional criteria for packaged food and beverage in the Indonesian Drug and Food Agency Regulation No 13/2016 on the supervision of claims on labels and advertisements of processed foods⁽²⁰⁾. Based on this regulation, beverages were categorised as unhealthy if they contained alcohol or high levels of sugar (6 g/100 ml). The regulation does not limit the use of artificial sweeteners. In addition, artificial sweeteners were not considered to be a factor for the increased risk of obesity, diabetes and CVD and thus using artificial sweeteners do not classify a product to be unhealthy in the current analysis. Foods were categorised as unhealthy if they contained high levels of sugar (10 g/100 g), salt (300 mg/100 g) and/or fat (18 g/100 g).

Statistical analysis

F&B adverts were counted in two ways: as individual advertisements and as sets of similar advertisements at a single location. For example, if there were four advertisements for brand X and three for brand Y at a particular location, this would be counted as seven individual advertisements and two sets of advertisements. In the descriptive analysis, we assessed the number of F&B adverts according to the type of advertisement and the product type, and the numbers of F&B adverts according to the area, the number of children and adolescents in the area, and the distance from facilities used by children and adolescents. District-level data about areas and populations of children and adolescents were obtained from the local statistics bureau report forms^(21–24).

The main measures of interest in this study were the densities of outdoor F&B adverts for healthy and unhealthy products within a radius of 100 m, 100–300 m and 300–500 m from facilities used by children and adolescents. The 100 m and 300 m distance was chosen as a limit for a 5 min and 10 min walk⁽²⁵⁾, and the maximum 500 m was chosen as this is a maximum distance a child or adolescent can walk comfortably. We calculated the number of neighbouring sets of advertisements from each type of facility within each radius using their GPS locations to calculate

their distance adjusting for the Earth's radius at the Equator in Stata 14. Densities were calculated by dividing the number of neighbouring sets of F&B adverts by the area within the radius (in km²).

We conducted a hotspot analysis to identify statistically significant locations with high number (hotspots) of unhealthy and low number (cold spots) of healthy product advertisements. Because of the limited number of advertisements found, we combined healthy foods and beverages for the cold spot analysis and combined unhealthy foods and beverages for the hotspot analysis. We divided the study area into a grid of 500 × 500 m because we estimated that children and adolescents could walk comfortably for a maximum distance of 500 m and also because this is the distance commonly used in policy for sales restriction and zonation. Grids with significantly higher or lower numbers of sets of F&B adverts at the 1 and 5 % significance levels compared with the neighbouring grids were identified using the Getis-Ord Gi* spatial statistic in the Hotspot Plugin in QGIS 2.8⁽²⁶⁾.

Results

The number of sets of F&B adverts as a proportion of all outdoor advertisements was slightly higher in Banyuwangi than in Surabaya. Of the 570 F&B adverts recorded in Banyuwangi, 227 (39.8%) and 273 (47.9%) were for unhealthy foods and beverages, respectively. Of 960 F&B adverts in Surabaya, 271 (28.2%) and 445 (46.3%) were for unhealthy foods and beverages. The advertisements for unhealthy beverage that were widely advertised were packaged tea drinks (bottles, glasses and cartons), powder drinks and packaged sugar coffee. Unhealthy food advertisements that were advertised were ice cream, instant noodles, frozen food (sausages, nuggets) and snacks.

Surabaya had double the density of F&B adverts than Banyuwangi (27.3 *v.* 11.1/km²), but the numbers of F&B adverts per 1000 children and adolescents were similar (16.4 *v.* 13.6/1000 adolescents). Banners were the most common type of F&B adverts in Banyuwangi (57.0%) and Surabaya (50.6%), followed by posters (13.7% in Banyuwangi and 22.0% in Surabaya) and store name boards (10.4% in Banyuwangi and 10.0% in Surabaya). Both districts had examples of other types of F&B adverts, including hoardings (billboards), merchandise, stickers and vending machines (Table 1).

Most of the F&B adverts in both districts were for unhealthy foods or beverages. In Banyuwangi, there were 4.5 times more unhealthy beverage advertisements compared with healthy beverage advertisements (47.9% *v.* 10.5%) and 22.1 times more unhealthy food advertisements compared with healthy food advertisements

Table 1 Distribution of outdoor food and beverage advertisements ('F&B ads') in Banyuwangi District and Surabaya City

Variable	Banyuwangi						Surabaya					
	F&B ad sets	% of F&B ad sets	% of all ad sets	F&B ads	% of F&B ads	% of all ads	F&B ad sets	% of F&B ad sets	% of all ad sets	F&B ads	% of F&B ads	% of all ads
Total	570		22.4	896		23.9	960		18.4	1303		16.7
Population	139 734			139 734			203 188			203 188		
Population aged < 19 years	41 823			41 823			58 490			58 490		
Area (km ²)	51.2			51.2			35.2			35.2		
F&B ads per km ²	11.1			17.5			27.3			37.0		
F&B ads per 1000 adolescents	13.6			21.4			16.4			22.3		
By Type												
Billboards	2	0.3	0.1	3	0.3	0.1	16	1.7	0.3	16	1.2	0.2
Merchandise	3	0.5	0.1	7	0.8	0.2	23	2.4	0.4	25	1.9	0.3
Store name boards	59	10.4	2.3	71	7.9	1.9	96	10.0	1.8	97	7.4	1.2
Posters	78	13.7	3.1	183	20.4	4.9	211	22.0	4.0	336	25.8	4.3
Banners	325	57.0	12.8	484	54.0	12.9	486	50.6	9.3	657	50.4	8.4
Stickers	14	2.5	0.5	19	2.1	0.5	41	4.3	0.8	57	4.4	0.7
Vending machine	44	7.7	1.7	48	5.4	1.3	58	6.0	1.1	58	4.5	0.7
Others	45	7.9	1.8	81	9.0	2.2	29	3.0	0.6	57	4.4	0.7
By product type												
Healthy beverage	60	10.5	2.3	114	12.7	3.0	227	23.7	4.4	276	21.2	3.5
Sugarless	52	9.1	2.0	105	11.7	2.8	214	22.3	4.1	263	20.2	3.4
Using sweeteners	8	1.4	0.3	9	1.0	0.2	13	1.4	0.2	13	1	0.2
Unhealthy beverage	273	47.9	10.8	425	47.4	11.3	445	46.3	8.5	671	51.5	8.6
Alcoholic	4	0.7	0.2	9	1.0	0.2	2	0.2	0.04	2	0.2	0.0
High sugar	269	47.2	10.6	416	46.4	11.1	443	46.1	8.5	226	51.3	8.6
Healthy food	10	1.8	0.4	11	1.2	0.3	17	1.8	0.3	22	1.7	0.3
Unhealthy food	227	39.8	8.9	346	38.6	9.2	271	28.2	5.2	334	25.6	4.3
High sugar	167	29.3	6.6	235	26.2	6.3	187	19.5	3.6	226	17.3	2.9
High fat	8	1.4	0.3	12	1.4	0.3	33	3.4	0.6	38	2.9	0.5
High salt	52	9.1	2.0	99	11.0	2.6	51	5.3	1.0	70	5.4	0.9

'F&B ad' refers to each individual advertisement, whereas 'F&B ad sets' refer to groups of advertisements at a single location all for the same brand.



(39.8% *v.* 1.8%). In contrast, in Surabaya, there were less ratio of unhealthy over healthy products with only 1.9 times unhealthier beverage advertisements compared with healthy beverage advertisements (46.3% *v.* 23.7%) and 15.6 times more unhealthy food advertisements compared with healthy food advertisements (28.2% *v.* 1.8%). Most advertisements for unhealthy beverages were for high-sugar beverages in both Banyuwangi (47.2%) and Surabaya (46.1%) (Table 1).

In Banyuwangi, 472 facilities used by children and adolescents were identified. Of these, the proportions with at least one neighbour with at least one set of F&B adverts at distances of 0–100, 100–300 and 300–500 m were 51.7, 90.9 and 92.2%, respectively. In Surabaya, 634 facilities used by children and adolescents were identified. Of these, the proportions with at least one neighbour with at least one set of F&B adverts at distances of 0–100, 100–300 and 300–500 m were slightly higher than that of Banyuwangi with 67.4, 95.3 and 98.6%, respectively (Table 2).

In all facilities (Banyuwangi and Surabaya), the density of F&B adverts increased closer to the facilities for children and adolescents. The density of sets of F&B adverts at a distance of 0–100 m from facilities in Surabaya was double than that in Banyuwangi. In Banyuwangi, the highest density of sets of unhealthy beverage advertisements was near sites of higher education (72.6/km² at 0–100 m, around seven times the density at 100–300 m). In contrast, the highest density of sets of unhealthy beverage advertisements in Surabaya was at recreation centres and religious sites (64.5/km² and 57.7/km², respectively, around 5.4 and 2 times the densities at 100–300 m) (Table 2).

The hotspot and cold spot analyses (Figs 1 and 2) showed both districts had one hotspot with significantly high numbers of sets of unhealthy F&B adverts and a single cold spot with a significantly low number of sets of healthy F&B adverts in Banyuwangi and no cold spot in Surabaya. In Banyuwangi, the hotspot area of unhealthy F&B adverts covered 2.25 km² at a significance level of 1% and 3.25 km² at a significance level of 5%, whereas the cold spot area of healthy F&B adverts covered 0.25 km² at both significance levels. In Surabaya, the hotspot area of unhealthy F&B adverts covered 0.75 km² at a significance level of 1% and 2.25 km² at a significance level of 5%. The number of facilities used by children and adolescents within the unhealthy F&B advert hotspots in Banyuwangi and Surabaya was similar (101 in Banyuwangi and 103 in Surabaya). Most of the facilities within the unhealthy F&B advert hotspots in Banyuwangi were other gathering sites, primary schools and religious sites (12, 15 and 59, respectively); in Surabaya, most were informal schools, religious sites and children's playgrounds (13, 33 and 36, respectively) (Table 2). Banyuwangi had two facilities within the healthy F&B advert cold spots; both were religious sites (Table 2).

Discussion

General findings

The current study showed that the proportion of F&B adverts among all outdoor advertisements was slightly higher in Banyuwangi than in Surabaya, although the density of sets of F&B adverts in Surabaya was two times that in Banyuwangi. It also showed that in both locations, advertisements for unhealthy foods and beverages increased nearer to facilities where children and adolescents gather. The coverage of unhealthy hotspots F&B adverts was greater in Banyuwangi than in Surabaya. There is a location in Banyuwangi where the number of healthy F&B adverts was significantly lower than its surrounding.

Comparison with other studies

The findings of this study are consistent with those of a study conducted by Kelly *et al.*^(7,12) in Mongolia (Ulaanbaatar), the Philippines (Manila) and Australia (Sydney), which reported that food advertisements increased closer to schools. The density of food advertisements in an area closest to schools was almost double than that in an area far from the school (0.9 *v.* 0.5 advertisements per 100 m² in Ulaanbaatar; 6.5 *v.* 3.3 per 100 m² in Manila; and 1.2 *v.* 0.6/100 m² in Sydney). The present study showed that more of the F&B adverts found around the child and adolescent facilities were for unhealthy products than healthy ones, consistent with the results of Kelly *et al.*⁽¹²⁾ and Missbach *et al.*⁽¹⁸⁾. Kelly *et al.* reported that the advertisements found around schools were commonly for unhealthy foods and beverages⁽¹²⁾, and Missbach *et al.* reported that as many as 84.2% of food advertisements within 950 m of 46 schools in the UK were for 'less healthy' foods⁽¹⁸⁾. Velazquez *et al.*⁽²⁷⁾ also reported that food advertisements around schools in Vancouver were often for unhealthy foods. Liu *et al.*'s research in New Zealand reported that children were exposed to advertisements for unhealthy foods around shopping areas, main streets, public transportation and sports venues⁽¹¹⁾. It can be concluded that children and adolescents might be more exposed to unhealthy F&B adverts, in line with research conducted by Kelly *et al.*⁽¹²⁾.

Possible explanation

In today's society, young people see outdoor advertisements for unhealthy foods and drinks everywhere at frequent times throughout the day, such as on the way to and from school every school day⁽¹²⁾. The American Psychological Association Task Force on Advertising and Children (gave special consideration to commercialism in schools for two reasons. First, children spend a considerable amount of their childhood in the school setting, and, because school attendance is compulsory, the children have little freedom to avoid seeing the commercial content they are exposed to in schools. Second, it is



Table 2 Mean numbers of food and beverage advertisements within various distances of facilities used by children and adolescents in Banyuwangi District and Surabaya City

	n	0–100 m				100–300 m				300–500 m				Facility within hotspot	Facility within cold spot
		n with neighbour	% with neighbour	Mean number of neighbours	Density per km ²	n with neighbour	% with neighbour	Mean number of neighbours	Density per km ²	n with neighbour	% with neighbour	Mean number of neighbours	Density per km ²		
Banyuwangi															
Overall	472	244	51.7	1.4	45.4	429	90.9	7.8	31.1	435	92.2	12.8	25.1	101	2
Healthy beverage		48	10.2	0.1	4.2	223	47.2	0.8	3.2	287	60.8	1.3	2.6	0	2
Healthy food		10	2.1	0.02	0.8	44	9.3	0.1	0.4	61	12.9	0.2	0.4		
Unhealthy beverage		156	33.1	0.6	19.8	371	78.6	3.2	12.9	386	81.8	5.5	10.7	101	0
Unhealthy food		135	28.6	0.5	16.1	360	76.3	2.9	11.5	395	83.7	4.7	9.2		
Other gathering sites															
Healthy beverage	72	6	8.3	0.1	2.7	37	51.4	0.9	3.6	48	66.7	1.4	2.8	0	0
Healthy food		2	2.8	0.03	0.9	10	13.9	0.2	0.6	6	8.3	0.1	0.2		
Unhealthy beverage		18	25.0	0.4	12.5	61	84.7	3.6	14.6	59	81.9	5.7	11.1	12	0
Unhealthy food		20	27.8	0.5	16.6	64	88.9	3.4	13.7	65	90.3	4.6	8.9		
Primary school															
Healthy beverage	59	7	11.9	0.1	3.8	28	47.5	0.8	3.1	36	61.0	1.3	2.6	0	0
Healthy food		2	3.4	0.1	1.6	7	11.9	0.1	0.5	7	11.9	0.2	0.3		
Unhealthy beverage		22	37.3	0.6	19.7	40	67.8	2.9	11.6	43	72.9	5.1	10.0	15	0
Unhealthy food		13	22.0	0.5	14.8	43	72.9	2.7	10.8	43	72.9	4.1	8.1		
Middle school															
Healthy beverage	16	1	6.3	0.1	2.0	8	50.0	0.6	2.5	9	56.3	0.8	1.6	0	0
Healthy food		0	0.0	0.0	0.0	0	0.0	0.0	0.0	0	0.0	0.0	0.0		
Unhealthy beverage		8	50.0	1.0	32.3	13	81.3	3.6	14.3	12	75.0	2.6	5.0	2	0
Unhealthy food		3	18.8	1.1	36.3	12	75.0	2.1	8.5	11	68.8	4.0	7.8		
High school															
Healthy beverage	20	2	10.0	0.2	4.8	6	30.0	0.5	1.8	12	60.0	1.3	2.6	0	0
Healthy food		0	0.0	0.0	0.0	0	0.0	0.0	0.0	0	0.0	0.0	0.0		
Unhealthy beverage		7	35.0	0.6	19.4	19	95.0	4.1	16.3	19	95.0	4.5	8.7	2	0
Unhealthy food		4	20.0	0.5	14.5	9	45.0	0.9	3.6	14	70.0	2.9	5.7		

Table 2 Continued

	0–100 m				100–300 m				300–500 m				Facility within hotspot	Facility within cold spot	
	<i>n</i>	<i>n</i> with neighbour	% with neighbour	Mean number of neighbours	Density per km ²	<i>n</i> with neighbour	% with neighbour	Mean number of neighbours	Density per km ²	<i>n</i> with neighbour	% with neighbour	Mean number of neighbours			Density per km ²
Higher education															
Healthy beverage	8	3	37.5	0.5	16.1	2	25.0	0.5	2.0	3	37.5	0.6	1.2	0	0
Healthy food		0	0.0	0.0	0.0	0	0.0	0.0	0.0	1	12.5	0.1	0.2		
Unhealthy beverage		6	75.0	2.3	72.6	7	87.5	2.6	10.5	7	87.5	6.3	12.3	1	0
Unhealthy food		3	37.5	0.5	14.5	6	75.0	1.8	3.6	7	87.5	5.0	5.7		
Informal teaching facility															
Healthy beverage	7	0	0.0	0.0	0.0	4	57.1	1.4	5.7	5	71.4	1.3	2.5	0	0
Healthy food		1	14.3	0.1	4.6	2	28.6	0.4	1.7	0	0.0	0.0	0.0		
Unhealthy beverage		2	28.6	0.7	23.0	5	71.4	4.0	16.1	6	85.7	7.1	14.0	2	0
Unhealthy food		2	28.6	0.7	23.0	5	71.4	1.9	7.5	6	85.7	4.7	9.2		
Recreation centre															
Healthy beverage	8	2	25.0	0.8	24.2	5	62.5	1.6	6.5	6	75.0	1.9	3.7	0	0
Healthy food		0	0.0	0.0	0.0	4	50.0	0.5	2.0	3	37.5	0.6	1.2		
Unhealthy beverage		4	50.0	1.5	48.4	8	100.0	7.8	31.1	8	100.0	14.6	28.7	6	0
Unhealthy food		3	37.5	0.4	12.1	8	100.0	4.0	16.1	8	100.0	6.4	12.5		
Religious site															
Healthy beverage	260	26	10.0	0.1	4.2	126	48.5	0.8	3.2	154	59.2	1.3	2.5	0	2
Healthy food		5	1.9	0.02	0.6	21	8.1	0.1	0.4	43	16.5	0.2	0.5		
Unhealthy beverage		81	31.2	0.5	16.1	198	76.2	3.0	12.0	214	82.3	5.5	10.8	59	0
Unhealthy food		78	30.0	0.5	15.0	198	76.2	3.1	12.2	221	85.0	5.0	9.8		
Sports centre															
Healthy beverage	22	1	4.5	0.0	1.5	7	31.8	0.7	2.7	14	63.6	1.2	2.4	0	0
Healthy food		0	0.0	0.0	0.0	0	0.0	0.0	0.0	1	4.5	0.05	0.1		
Unhealthy beverage		8	36.4	1.5	48.4	20	90.9	2.7	11.0	18	81.8	4.5	8.8	2	0
Unhealthy food		9	40.9	0.5	17.6	15	68.2	2.0	7.8	20	90.9	3.8	7.4		



Table 2 Continued

	0–100 m			100–300 m			300–500 m			Density per km ²	Facility within hotspot	Facility within cold spot	
	n with neighbour	% with neighbour	Mean number of neighbours	n with neighbour	% with neighbour	Mean number of neighbours	n with neighbour	% with neighbour	Mean number of neighbours				
	n	Density per km ²	Mean number of neighbours	n	Density per km ²	Mean number of neighbours	n	Density per km ²	Mean number of neighbours				
Surabaya													
Overall	634	92.7	2.9	604	95.3	13.9	55.9	625	98.6	19.2	37.6	103	0
Healthy bev- erage	216	18.0	0.6	509	80.3	3.0	12.0	579	91.3	4.5	8.7	0	0
Healthy food	22	1.6	0.05	113	17.8	0.3	1.1	151	23.8	0.4	0.8		
Unhealthy beverage	307	42.9	1.3	535	84.4	6.2	25.0	600	94.6	8.2	16.2	103	0
Unhealthy food	226	25.6	0.8	520	82.0	3.8	15.2	589	92.9	5.2	10.2		
Other gather- ing sites													
Healthy bev- erage	202	18.4	0.6	156	77.2	2.9	11.8	184	91.1	4.1	8.0	0	0
Healthy food	9	1.9	0.1	36	17.8	0.3	1.1	50	24.8	0.4	0.8		
Unhealthy beverage	99	45.8	1.4	167	82.7	6.4	25.7	189	93.6	7.7	15.1	36	0
Unhealthy food	76	24.6	0.8	167	82.7	3.8	15.4	184	91.1	4.8	9.5		
Primary school													
Healthy bev- erage	46	18.9	0.6	37	80.4	3.0	12.1	44	95.7	4.9	9.5	0	0
Healthy food	2	1.4	0.04	7	15.2	0.2	1.0	11	23.9	0.4	0.7		
Unhealthy beverage	24	36.5	1.1	40	87.0	5.5	22.0	45	97.8	8.8	17.2	5	0
Unhealthy food	17	30.2	0.9	38	82.6	3.7	14.8	42	91.3	4.9	9.6		
Middle school													
Healthy bev- erage	24	20.2	0.6	23	95.8	3.7	14.9	21	87.5	5.0	9.7	0	0
Healthy food	0	0.0	0.0	4	16.7	0.3	1.3	5	20.8	0.4	0.8		
Unhealthy beverage	11	34.9	1.1	23	95.8	6.9	27.8	23	95.8	9.5	18.6	4	0
Unhealthy food	7	18.8	0.6	19	79.2	4.0	16.1	24	100.0	6.9	13.5		
High school													
Healthy bev- erage	26	6.2	0.2	20	76.9	2.8	11.4	24	92.3	4.9	9.7	0	0
Healthy food	1	1.2	0.0	5	19.2	0.3	1.1	3	11.5	0.3	0.5		
Unhealthy beverage	8	24.8	0.8	20	76.9	5.9	23.6	23	88.5	9.0	17.6	3	0
Unhealthy food	7	17.4	0.5	21	80.8	3.8	15.1	26	100.0	6.9	13.5		

Table 2 Continued

	0–100 m				100–300 m				300–500 m				Facility within hotspot	Facility within cold spot	
	<i>n</i>	<i>n</i> with neighbour	% with neighbour	Mean number of neighbours	Density per km ²	<i>n</i> with neighbour	% with neighbour	Mean number of neighbours	Density per km ²	<i>n</i> with neighbour	% with neighbour	Mean number of neighbours			Density per km ²
Higher education															
Healthy beverage	23	6	26.1	0.7	21.0	17	73.9	3.1	12.4	22	95.7	4.1	8.1	0	0
Healthy food		0	0.0	0.0	0.0	3	13.0	0.2	0.7	3	13.0	0.1	0.3		
Unhealthy beverage		10	43.5	1.1	36.5	19	82.6	6.4	25.8	22	95.7	7.5	14.7	2	0
Unhealthy food		5	21.7	0.7	22.4	19	82.6	3.6	14.5	22	95.7	5.5	10.8		
Informal teaching facility															
Healthy beverage	70	22	31.4	0.5	15.2	62	88.6	3.4	13.5	64	91.4	5.7	11.1	0	0
Healthy food		4	5.7	0.1	1.8	11	15.7	0.3	1.1	15	21.4	0.3	0.7		
Unhealthy beverage		21	30.0	0.8	26.3	59	84.3	5.2	21.1	65	92.9	8.7	17.1	13	0
Unhealthy food		15	21.4	0.5	16.1	50	71.4	2.9	11.8	63	90.0	5.5	10.9		
Recreation centre															
Healthy beverage	2	1	50.0	1.0	32.3	1	50.0	0.5	2.0	2	100.0	9.5	18.6	0	0
Healthy food		0	0.0	0.0	0.0	0	0.0	0.0	0.0	2	100.0	1.5	2.9		
Unhealthy beverage		1	50.0	2.0	64.5	2	100.0	3.0	12.0	2	100.0	15.0	29.4	1	0
Unhealthy food		0	0.0	0.0	0.0	2	100.0	1.5	6.0	2	100.0	6.0	11.8		
Religious site															
Healthy beverage	199	84	42.2	0.7	21.7	166	83.4	3.2	12.7	181	91.0	4.4	8.5	0	0
Healthy food		6	3.0	0.1	1.9	43	21.6	0.4	1.4	50	25.1	0.4	0.8		
Unhealthy beverage		122	61.3	1.8	57.7	176	88.4	7.1	28.4	192	96.5	8.4	16.4	33	0
Unhealthy food		92	46.2	1.1	35.5	175	87.9	4.4	17.7	189	95.0	5.2	10.2		
Sports centre															
Healthy beverage	42	6	14.3	0.2	5.4	27	64.3	1.6	6.6	37	88.1	3.5	6.9	0	0
Healthy food		0	0.0	0.0	0.0	4	9.5	0.1	0.4	12	28.6	0.4	0.7		
Unhealthy beverage		11	26.2	0.4	11.5	29	69.0	3.5	14.2	39	92.9	7.6	15.0	6	0
Unhealthy food		7	16.7	0.2	6.1	29	69.0	2.1	8.4	37	88.1	4.5	8.8		

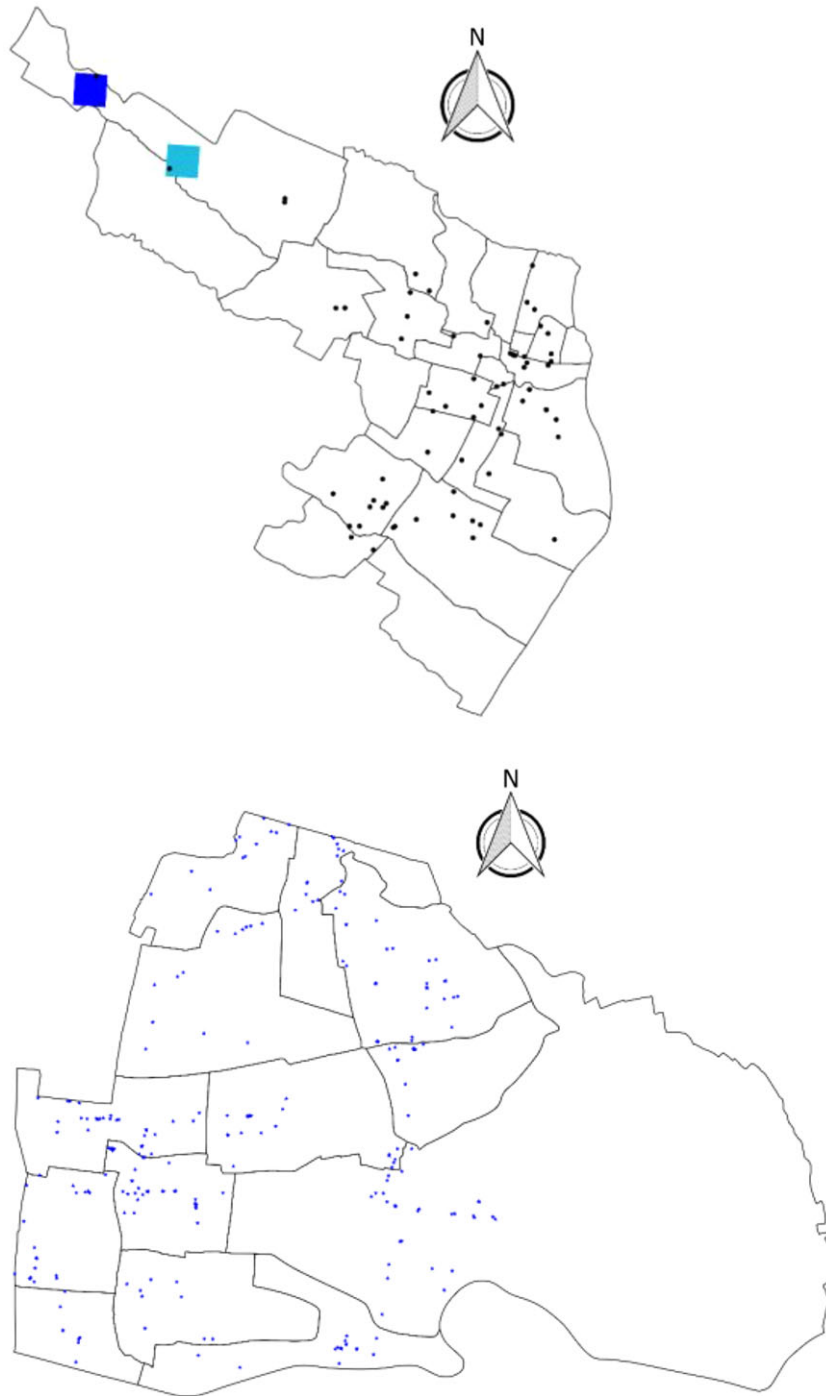


Fig. 1 (colour online) Cold spots of healthy food and beverage advertisements in Banyuwangi (upper map) and Surabaya (lower map). Healthy Food and Beverage Ads, ■, Healthy F&B Ads, Hotspot Healthy F&B Ads; ■, coldspot 99 % confidence; ■, coldspot 95 % confidence

conceivable that the commercial content presented in schools is assumed by the children to have the tacit endorsement of respected teachers and school officials, thereby enhancing the effectiveness of the advertising⁽²⁸⁾.

Children and adolescents have greater autonomy and decision-making power within the family than in previous generations, and they can easily ask parents to buy what

they want. They have 'Pester Power' which is an ability possessed by children to whimper and nag their parents to buy things they want. Pester Power is used for marketing strategies for food and drinks in children because it is very powerful⁽²⁹⁾. Advertisers use children and adolescents as their target because they can influence their parents' purchasing decisions and they are future adult consumers⁽³⁰⁾.

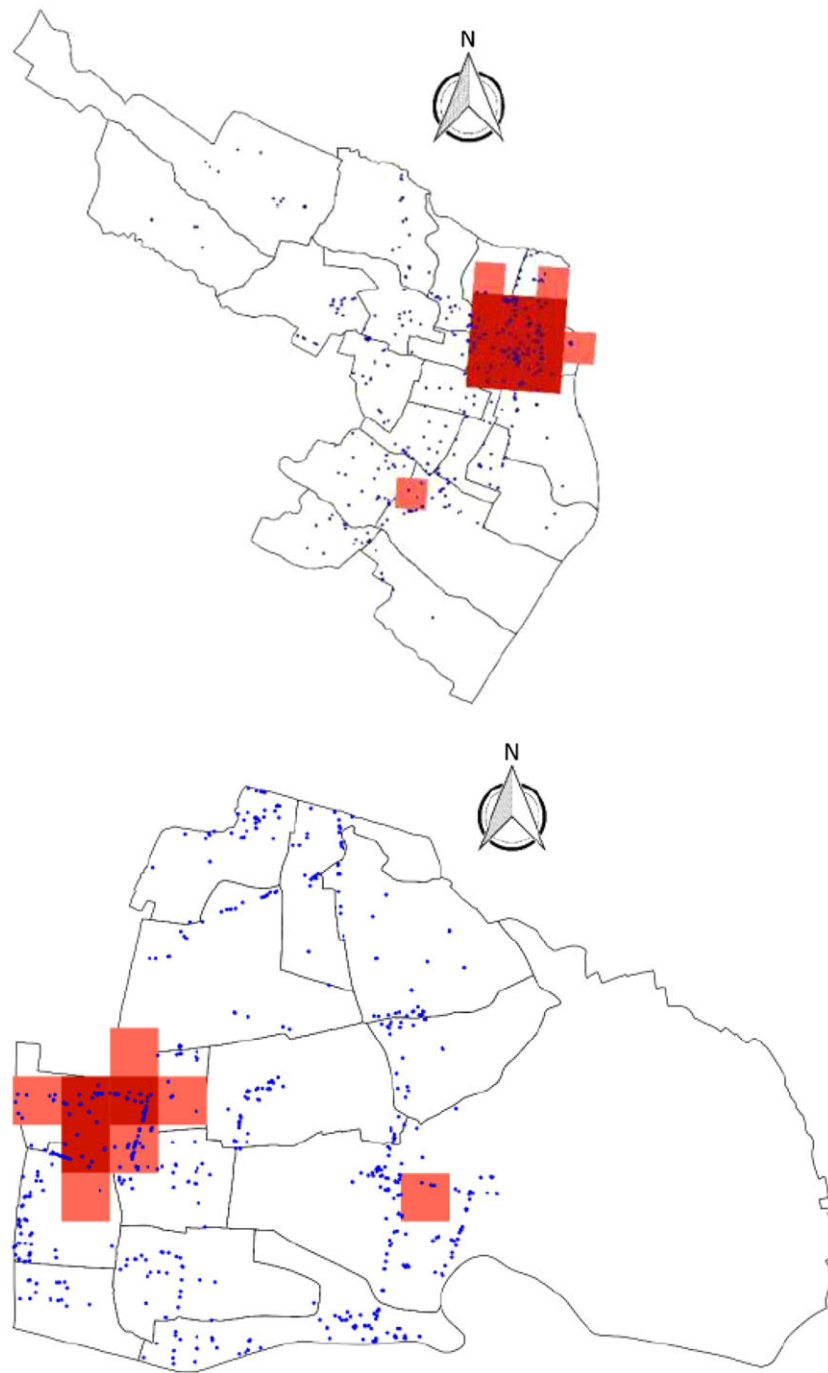


Fig. 2 (colour online) Hotspots of unhealthy food and beverage advertisements in Banyuwangi (upper map) and Surabaya (lower map). Unhealthy Food and Beverage Ads, •, unhealthy F&B Ads, Hotspot unhealthy F&B Ads; ■, hotspot 95 % confidence; ■, hotspot 99 % confidence

To invest on these future consumers, advertisers build purchasing habits and brand awareness among children despite the fact that children do not have the ability to assess the content and advertising messages⁽²⁸⁾. The purchasing habits and brand awareness will develop over time as a function of intellectual development and cognitive growth⁽²⁸⁾. In fact, in 2006 in the USA, forty-four companies, including Kraft Foods, Pepsi Co, and Nestle as top

spenders, spent a total of \$ 1 618 600 000 to promote food and drinks to children and adolescents through television, radio, print media, food packaging, in-store display materials and marketing in schools⁽³¹⁾.

Outdoor advertising has an impact on nutritional knowledge, food preferences and consumption patterns⁽³²⁾. On the other hand, Lesser⁽³³⁾ stated that the odds of obesity are positively associated with the percentage of outdoor



advertising promoting food or non-alcoholic drinks, after being controlled by race, age and educational status.

Strengths and limitations of the study

To the best of our knowledge, this is the first report on food and beverage advertisements in Indonesia. The study findings can be used to identify priority areas for policy action. Although the findings may not be generalisable to the whole of Indonesia, our results provide information for both a big city (Surabaya city) and a small district (Banyuwangi District). However, we did not categorise advertisements for foods and beverages with low nutritional value, so there might be an underestimation in the calculations of unhealthy advertisements. We used a hotspot plugin in QGIS 2.8 that is not as sophisticated as that available in ArcGIS. We therefore could only analyse the hotspots of F&B adverts using number of location points in 500 × 500 m grids. The 500 m grids might be arbitrary; however, this is the maximum distance for a comfortable walk for a child and adolescents. Also, as this is the most commonly used distance for zoning regulation, the study provides evidence that fits for policy discussion regarding zonation. In addition, the study was focused on exploration of outdoor F&B adverts density and proximity to facilities used by children and adolescents. As such the study did not determine the causal relationship between these factors and the prevalence of obesity, diabetes and CVD.

Policy implications

Public policies are needed to protect children and adolescents from marketing unhealthy foods. Not doing anything or merely monitoring the unhealthy F&B adverts will be unethical as the government of Indonesia are obliged to protect children and adolescents from stimulation for unhealthy behaviours. Looking at the unsuccessful attempt of Indonesia to ban all types of cigarette adverts, banning all unhealthy F&B adverts will also face major obstacles. Therefore, following Nuffield Ladder of intervention, we propose several interventions. First, to enable the public to make healthier choice, healthy F&B adverts only zonation such as 'green food zone' in South Korea⁽³⁴⁾ can be adopted and placement of outdoor unhealthy F&B adverts within 500 m near children and adolescent facilities in Indonesia should be banned. Second, the density of advertisements for healthier options should be increased by giving incentives to food and beverage industry to advertise their healthy products. Our study in Banyuwangi revealed a cold spot where the number of healthy F&B adverts is very low compared with its surrounding. The incentives can be in the form of waiver for advertising tax and easier permit. Third, disincentives can be used by imposing taxes on outdoor advertisements for unhealthy foods and beverages⁽³³⁾.

Future studies are needed to evaluate the effectiveness of each programme in reducing the prevalence of advertisements for unhealthy foods and beverages. Studies are

also needed to assess the impact of advertisement on the eating behaviour of children and adolescents.

Conclusion

In both Surabaya and Banyuwangi, the outdoor advertisements for unhealthy foods and beverages outnumbered those for healthy products. The density of advertisements increased towards facilities used by children and adolescents. Most areas in Banyuwangi and Surabaya are covered by unhealthy F&B adverts hotspots. Banyuwangi has locations needing more healthy F&B adverts. There is an urgent need for the appropriate regulation of outdoor advertising for unhealthy foods and beverages, especially in the vicinity of locations used by children and adolescents.

Acknowledgements

Acknowledgement: The authors wish to thank the local government of Banyuwangi and Surabaya. *Financial support:* The current study was funded by Universitas Airlangga's Riset Mandat Grant No. 360/UN3.14/LT/2019. *Conflict of interest:* All authors declared no conflict of interest. *Authorship:* S.I.P. helped design the study, conducted training, coordinated field data collection, conducted data cleaning and analysis and prepared the manuscript. D.M.S.K.D. helped design the study, conducted training, data analysis and revised the manuscript. E.A. helped design the study, conducted training, coordinated field data collection, conducted data cleaning and revised the manuscript. D.K. helped design of the study and analysis and revised the manuscript. S.M. helped design the study and revised the manuscript. S.K.S. designed the study, conducted data collector training, designed data architecture, conducted data cleaning and analysis and revised the manuscript. *Ethics of human subject participation:* The current study was conducted according to the guidelines laid down in the WHO-CIOMS 2016, and all procedures involving research study participants were approved by the Ethics Committee of the Faculty of Public Health Universitas Airlangga, with a certificate number 172/EA/KEPK/2019.

References

1. Directorate General of Disease Prevention and Control (P2P) Ministry of Health RI (2018) *Action Plan for Disease Prevention and Control Program 2015–2019 (Revision I–2018)*. Jakarta: Ministry of Health.
2. Research and Development Agency of the Ministry of Health of the Republic of Indonesia (2018) *2018 National Report on Basic Health Research*. Jakarta: Ministry of Health.



3. Research and Development Agency of the Ministry of Health of the Republic of Indonesia (2013) *2013 National Report on Basic Health Research*. Jakarta: Ministry of Health.
4. Institute of Medicine (2006) *Food Marketing to Children and Youth: Threat or Opportunity?* Washington: The National Academies Press.
5. Williams JD, Pasch KE & Collins CA (2013) *Advances in Communication Research to Reduce Childhood Obesity*. New York: Springer.
6. Kelly B, King L, Chapman K *et al.* (2015) A hierarchy of unhealthy food promotion effects: Identifying methodological approaches and knowledge gaps. *Am J Public Health* **105**, e86–e95.
7. Kelly B, Cretikos M, Rogers K *et al.* (2008) The commercial food landscape: outdoor food advertising around primary schools in Australia. *Aust N Z J Public Health* **32**, 522–528.
8. Hillier A, Cole BL, Smith TE *et al.* (2009) Clustering of unhealthy outdoor advertisements around child-serving institutions: a comparison of three cities. *Heal Place* **15**, 935–945.
9. Adams J, Ganiti E & White M (2010) Socio-economic differences in outdoor food advertising in a city in Northern England. *Public Health Nutr* **14**, 945–950.
10. Walton M, Pearce J & Day P (2009) Examining the interaction between food outlets and outdoor food advertisements with primary school food environments. *Heal Place* **15**, 841–848.
11. Liu W, Barr M, Pearson AL *et al.* (2019) Space-time analysis of unhealthy food advertising: New Zealand children's exposure and health policy options. *Health Promot Int* **35**, 1–9.
12. Kelly B, King L, Jamiyan B *et al.* (2015) Density of outdoor food and beverage advertising around schools in Ulaanbaatar (Mongolia) and Manila (The Philippines) and implications for policy. *Crit Public Health* **25**, 280–290.
13. Pasch KE, Komro KA, Perry CL *et al.* (2007) Outdoor alcohol advertising near schools: what does it advertise and how is it related to intentions and use of alcohol among young adolescents? *J Stud Alcohol Drugs* **68**, 587–596.
14. Kelly B (2018) *Advertising and Marketing to Children*. US: Elsevier.
15. Nielsen (2019) Outdoor media as a marketing strategy. <https://www.nielsen.com/id/id/press-releases/2019/media-luar-ruang-sebagai-strategi-marketing/> (accessed September 2020).
16. Cohen DA & Lesser LI (2016) Obesity prevention at the point of purchase. *Obes Rev* **17**, 389–396.
17. Sebayang SK, Dewi DMSK, Lailiyah S *et al.* (2019) Mixed-methods evaluation of a ban on tobacco advertising and promotion in Banyuwangi District, Indonesia. *Tob Control* **28**, 651–656.
18. Missbach B, Pachschröll C, Kuchling D *et al.* (2017) School food environment: quality and advertisement frequency of child-oriented packaged products within walking distance of public schools. *Prev Med Rep* **6**, 307–313.
19. KoboToolBox (2012) KoboCollect. v1.14.0a. KoboToolBox. <https://www.kobotoolbox.org/> (accessed September 2020).
20. Food and Drug Administration (2016) *Regulation of the Head of the Food and Drug Administration of the Republic of Indonesia Number 13 of 2016 Concerning Supervision of Processed Food Label and Advertisement Claims*. Jakarta: Food and Drug Administration.
21. Central Bureau of Statistics of Banyuwangi Regency (2018) *Giri District in Figures 2018*. Banyuwangi: Central Bureau of Statistics of Banyuwangi Regency.
22. Central Bureau of Statistics of Banyuwangi Regency (2018) *Banyuwangi District in Figures 2018*. Banyuwangi: Central Bureau of Statistics of Banyuwangi Regency.
23. Central Bureau of Statistics of Surabaya City (2018) *Sukolilo District in Figures 2019*. Surabaya: Central Bureau of Statistics of Surabaya City.
24. Central Bureau of Statistics of Surabaya City (2019) *Mulyorejo District in Figures 2019*. Surabaya: Central Bureau of Statistics of Surabaya City.
25. Megatsari H, Ridlo I, Amir V *et al.* (2019) Visibility and hot-spots of outdoor tobacco advertisement around educational facilities without an advertising ban: geospatial analysis in Surabaya City, Indonesia. *Tob Prev Cessat* **5**, 1–6.
26. Oxoli D, Prestifilippo G, Bertocchi D *et al.* (2017) Enabling spatial autocorrelation mapping in QGIS: the hotspot analysis Plugin. *Geoinf Ambient e Mineraria* **151**, 45–50.
27. Velazquez CE, Daepf MIG & Black JL (2019) Assessing exposure to food and beverage advertisements surrounding schools in Vancouver, BC. *Heal Place*. Published online: 11 January 2019. doi: 10.1016/j.healthplace.2018.12.007.
28. Wilcox BL, Kunkel D, Cantor J *et al.* (2004) *Report of the APA Task Force on Advertising and Children*. Massachusetts: American Psychological Association.
29. Lawlor MA & Prothero A (2011) Pester power – a battle of wills between children and their parents. *J Mark Manag* **27**, 561–581.
30. Canada's Centre For Digital And Media Literacy (2020) How Marketers Target Kids Marketing. <http://mediasmarts.ca/digital-media-literacy/media-issues/marketing-consumerism/how-marketers-target-kids> (accessed February 2020).
31. Federal Trade Commission (2009) Marketing food to children and adolescents. A review of industry expenditures, activities, and self-regulation. <https://www.ftc.gov/reports/marketing-food-children-adolescents-review-industry-expenditures-activities-self-regulation> (accessed September 2020).
32. World Health Organization (2008) *School Policy Framework*. Geneva: World health Organization.
33. Lesser LI, Zimmerman FJ & Cohen DA (2013) Outdoor advertising, obesity, and soda consumption: a cross-sectional study. *BMC Public Health* **13**, 20.
34. Korean Ministry of Food and Drug Safety (2014) Special Act On Safety Management Of Children ' S Dietary Lifestyle. https://linkscommunity.org/assets/PDFs/south-korea_special-act-on-safety-management-of-children-s-dietary-lifestyle_2014.pdf (accessed January 2020).