



CASE BASED DISCUSSIONS

Lesson of the month: novel method to quantify neutrophil uptake in early lung cancer using SPECT-CT

Neda Farahi,¹ Daniel Gillett,² Mark Southwood,³ Doris Rassi,³ Nicola Tregay,¹ Uta Hill,⁴ Stephen Denis Preston ,³ Chrystalla Loutsios,¹ Laurence Si Chong Lok,¹ Sarah Heard,² John Buscombe,² Robert Campbell Rintoul ,^{5,6} A Michael Peters,⁷ Charlotte Summers,¹ Edwin R Chilvers ⁸

ABSTRACT

Neutrophils play an important role in the lung tumour microenvironment. We hypothesised that radiolabelled neutrophils coupled to single-photon emission CT (SPECT) may non-invasively quantify neutrophil uptake in tumours from patients with non-small cell lung cancer. We demonstrated increased uptake of radiolabelled neutrophils from the blood into tumours compared with non-specific uptake using radiolabelled transferrin. Moreover, indium-111-neutrophil activity in the tumour biopsies also correlated with myeloperoxidase (MPO)-positive neutrophils. Our data support the utility of imaging with In-111-labelled neutrophils and SPECT-CT to quantify neutrophil uptake in lung cancer.

INTRODUCTION

Lung cancer is the leading cause of cancer-related death worldwide. Inflammation has emerged as a hallmark of tumorigenesis, contributing to the development and progression of a range of cancers. Neutrophils are known to be important players in the tumour microenvironment and these tumour-associated neutrophils (TANs) are broadly classified into an N1 tumour-suppressing phenotype or an N2 tumour-promoting phenotype. While neutrophils may exert both pro-tumorous and antitumorous functions, the prevailing view is that they serve to exclude T cell access and hence promote tumour progression. In murine studies, Ly-6G-specific depletion of neutrophils reduced the metastatic burden in the lungs,¹ while in *kras*-driven mouse models of lung cancer, Gr1⁺ neutrophils were found to favour tumour growth, reduce T cell homing, and antagonise anti-programmed cell death protein 1 (PD-1) immunotherapy.² Furthermore, neutrophil derived mediators have been shown to be pro-tumorigenic; neutrophil elastase contributes to tumour proliferation,³ MMP-9 increases vascular endothelial growth factor release (from the extracellular matrix) to promote angiogenesis,⁴ and neutrophil extracellular traps can sequester circulating tumour cells in the pulmonary microvasculature, promoting the development of metastasis.⁵

Although evidence exists that infiltrating neutrophils accumulate in non-small cell lung cancer (NSCLC),⁶ direct non-invasive imaging and quantification of neutrophils within patient tumours has never been described. Such quantification could aid

in predicting the therapeutic response and clinical outcome of patients. Here we describe quantitative single-photon emission CT (SPECT)-CT using indium-111-radiolabelled autologous neutrophils to quantify neutrophil uptake in tumours of patients with early stage lung cancer, using indium-labelled transferrin as a marker for non-specific uptake of non-cell-bound activity. We also correlated tissue concentrations of radiolabelled neutrophils with histological evidence of MPO⁺ neutrophils. These findings have important implications for the use of quantitative SPECT-CT to monitor the extent of neutrophil uptake by tumours.

CLINICAL CASES

Six patients were selected for entry into the study met the following criteria: (1) positron emission tomography (PET) or biopsy confirmed preoperative stage I–II lung cancer in the mid-upper zones of the lung, (2) no prior chemotherapy or radiotherapy and (3) no other active malignancy. Biopsies were performed ≥ 1 month prior to acquisition of SPECT images. Tumours in the mid-upper zones were chosen to avoid potential overlap of the signal with physiological uptake of radiolabelled cells in the liver. Patient characteristics can be found in online supplementary table 1 and the study protocol is summarised in online supplementary figure 1.

In four volunteers, neutrophils were isolated from peripheral venous blood using plasma-Percoll gradients and radiolabelled with indium-111-tropolonate, as described in online supplementary files. Given that increased vascularity of tumours could contribute to enhanced uptake of In-111-neutrophils,⁷ we also assessed the uptake of In-111-transferrin into tumours. Transferrin can be taken up by tumours non-specifically through highly permeable blood vessels. Hence, in two further patients, In-111-transferrin was prepared as a control for non-specific uptake (online supplementary files), so that specific focal accumulation of In-111-neutrophils in the tumour area can be compared.

Over 40 min of dynamic gamma camera imaging, labelled neutrophils displayed physiological kinetics in liver, lungs and spleen, in line with previous results from healthy volunteers (online supplementary figure 2A).⁸ The recoveries of radiolabelled neutrophils from the peripheral blood 45 min after injection (online supplementary figure 2B) were comparable to

► Additional material is published online only. To view please visit the journal online (<http://dx.doi.org/10.1136/thoraxjnl-2020-214642>).

For numbered affiliations see end of article.

Correspondence to

Dr Neda Farahi, Department of Medicine, University of Cambridge, Cambridge CB2 0QQ, UK; nf231@medschl.cam.ac.uk

CS and ERC are joint senior authors.

Received 11 February 2020
Revised 25 June 2020
Accepted 14 July 2020
Published Online First
4 September 2020



© Author(s) (or their employer(s)) 2020. Re-use permitted under CC BY. Published by BMJ.

To cite: Farahi N, Gillett D, Southwood M, et al. *Thorax* 2020;**75**:1020–1023.



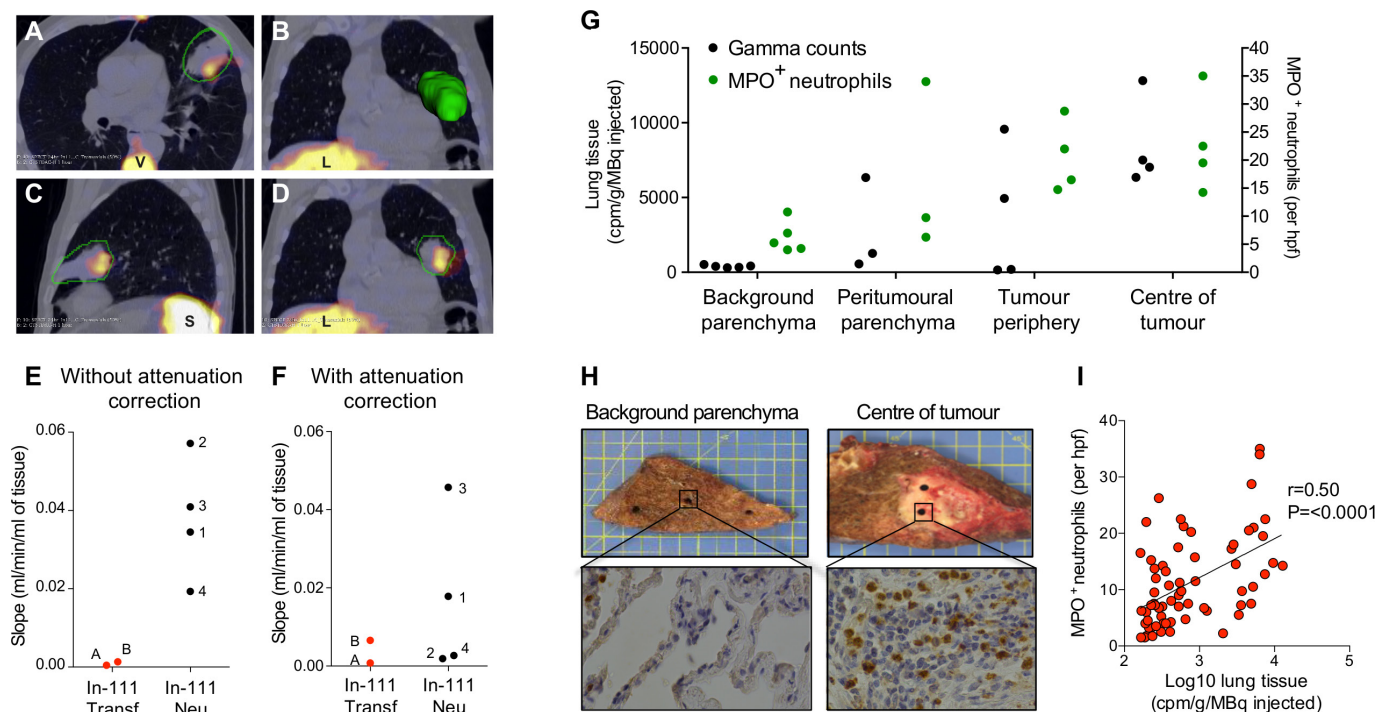


Figure 1 Quantification of radiolabelled neutrophils and radiolabelled transferrin in lung tumours of patients with early stage lung cancer. SPECT-CT images showing (A) transaxial, (B) coronal with three-dimensional reconstruction of tumour, (C) sagittal and (D) coronal plane from a patient with squamous cell carcinoma (case 1). Images show accumulation in the tumour (outlined in green) and physiological uptake in the liver (L), spleen (S) and vertebra (V) 20 hours after reinjection of In-111-labelled neutrophils. (E) and (F) Quantification of tumour uptake of In-111-labelled neutrophils (cases 1–4) and In-111-labelled transferrin (cases A and B) using non-attenuation corrected (E) and attenuation corrected values (F). (G) Tissue gamma counts and MPO⁺ neutrophil counts from the background parenchyma, peri-tumorous parenchyma, tumour periphery and tumour centre of a subject with squamous cell carcinoma (case 1). (H) Background parenchyma and tumour centre cores from case 1 (upper panels) alongside representative myeloperoxidase (MPO) immunohistochemical staining (lower panels). Magnification $\times 400$. (I) Correlation between gamma radiation counts and MPO⁺ neutrophil counts in four subjects. MPO⁺ neutrophils were counted in four high powered fields. Correlation coefficients were calculated using Spearman correlation analysis.

published data, indicating that the cells were not activated by isolation and radiolabelling. As expected, In-111-transferrin behaved as a labelled plasma protein (online supplementary figure 2A,B).

SPECT-CT showed very clear and evident uptake of neutrophils into the tumour of a patient with squamous cell carcinoma (case 1; figure 1A–D). As shown in figure 1E, tumour uptake increased in patients with injected In-111-neutrophils with a median of 0.0038 mL/min/mL (IQR; 0.0231–0.0531) compared with a median of 0.0009 mL/min/mL for In-111-transferrin (IQR; 0.0004–0.0013). SPECT-CT with attenuation correction (figure 1F) showed an overall increase in In-111-neutrophil clearance into tumour with a median of 0.0103 mL/min/mL (IQR; 0.0021–0.0387) compared with a median of 0.0037 mL/min/mL for In-111-transferrin clearance (IQR; 0.0008–0.0066). Of note, SPECT-CT without attenuation correction increased In-111-neutrophil clearance compared with In-111-transferrin clearance in all four patients, but only in two patients following attenuation correction. Attenuation correction of SPECT images is known to improve quantitative accuracy of malignant lesions in the body by reducing soft tissue artefacts.⁹ Therefore, we propose that the attenuation corrected values provide a more representative quantification of neutrophil clearance.

The median peripheral neutrophil count was higher in the In-111 neutrophil patient group compared with the In-111 transferrin group (online supplementary table 1); however, the correlation coefficient between the neutrophil count and the non-attenuation corrected Patlak-Rutland slope ($r=0.6$, $p=0.24$) or the attenuation

corrected Patlak-Rutland slope ($r=0.20$, $p=0.71$) was not significant for the six cases.

On cell counting of tissue *ex vivo*, case 1 displayed substantial accumulation of neutrophils in the centre (median 21 MPO⁺ neutrophils per hpf (IQR; 14–35) and periphery (median 19 MPO⁺ neutrophils per hpf (IQR; 15–29) of the tumour compared with the background parenchyma (median 5 MPO⁺ neutrophils per hpf (IQR; 4–11) (figure 1G,H). Similar findings were obtained in one further patient with a squamous cell carcinoma (online supplementary fig 3). There was no discernible neutrophil infiltration at the tumour centre or periphery in the patient with adenocarcinoma (online supplementary fig 3). When all four cases were combined, the radiolabelled neutrophil gamma counts positively correlated with the number of MPO⁺ neutrophils (figure 1I; $r=0.50$, 95% CI 0.291 to 0.666; $p<0.0001$). Of interest, neutrophils were detected by immunohistochemistry (IHC) when the gamma radiation counts were low, suggesting the presence of tissue resident neutrophils.

DISCUSSION

In the present study, we demonstrated quantitative *in vivo* SPECT-CT imaging of radiolabelled neutrophil uptake in tumours of patients with lung cancer. Our study also established that MPO⁺ neutrophils in lung resections correlated with radiolabelled neutrophil counts. Such a non-invasive imaging strategy could have important implications for monitoring neutrophil

infiltration into tumours, and assessing the impact of neutrophil-targeted therapies in NSCLC.

Two previous studies have reported enhanced uptake of In-111 mixed leukocytes and In-111 granulocytes into a number of localised malignant neoplasms such as pulmonary sarcoma, although without quantitative measurements and a subjective scoring protocol.^{10 11} There is current interest in quantifying tissue concentration of single-photon emitting tracers using attenuation-corrected SPECT-CT, with the aim of bringing SPECT-CT in line with PET-CT; we believe ours is the first attempt to do so in cell trafficking studies. The importance of our approach lies in the ability to fully exploit techniques such as Patlak-Rutland analysis, which, as in PET-CT, rely on absolute tissue quantification. In our previous studies of neutrophil trafficking in lung tissue, we circumvented this by normalising the Patlak-Rutland slope to the intercept of the plot, which reflects distribution volume of tracer in the tissue (the marginated pulmonary neutrophil pool). However, in solid tissue such as tumour, the quantitative nature of the intercept is uncertain. Quantitative SPECT-CT has general value in studies based on labelled neutrophils because quantification of neutrophil accumulation in enclosed spaces, like abscesses (as opposed to open tracts), uses crude indices such as abscess/background ratios at arbitrarily selected time points post-injection.

Of interest, we observed inter-tumour heterogeneity with respect to neutrophil uptake into tumours by both imaging and immunohistochemistry approaches, consistent with previous immunohistochemistry studies. A larger scale study will be required to understand the prognostic implication of such variable neutrophil infiltration. Some authors have suggested that, in addition to neutrophil abundance, the specific location of neutrophils within the tumour has prognostic relevance. Sody *et al*, using a murine model of neutrophil trafficking, found that neutrophils exhibit distinct migratory patterns depending on their localisation to intra-tumorous or peri-tumorous regions.¹²

Given the broadly pro-tumorigenic role of neutrophils, modulation of neutrophil migration into tumours is an attractive therapeutic approach in NSCLC. Indeed, targeting neutrophil recruitment may be beneficial as adjuvant therapy. The CXCR2 pathway has a major role in the control of neutrophil recruitment into tumours, and antagonists of the CXCR2 receptor have reduced tumour growth in murine studies. Phase II clinical trials using CXCR2 inhibitors in NSCLC patients are on-going.¹³ Our findings thus offer the prospect of imaging neutrophils in clinical trials to better understand the therapeutic response of targeting neutrophils.

Our study has several limitations. First, our results are drawn from a small sample size, and follow-up will be required to confirm the utility of neutrophil imaging in NSCLC. Second, as TANs exhibit significant heterogeneity, our study could not detect the maturity or activation status of the trafficked cells. Third, there are reports of increased transferrin receptor expression on lung cancer cells,¹⁴ which could limit the use of radiolabelled transferrin as a negative control. However, as both radiolabelled transferrin and radiolabelled neutrophils are injected in plasma, this will likely increase the baseline uptake in both cases.

In conclusion, we demonstrate how radiolabelled neutrophils and SPECT-CT can be combined to allow non-invasive quantification of neutrophil accumulation in lung cancer. Further studies of in vivo neutrophil trafficking in NSCLC are warranted.

Author affiliations

- ¹Department of Medicine, University of Cambridge, Cambridge, UK
- ²Department of Nuclear Medicine, Cambridge University Hospitals NHS Foundation Trust, Cambridge, UK
- ³Department of Pathology, Royal Papworth Hospital NHS Foundation Trust, Cambridge, UK
- ⁴Cambridge Centre for Lung Infection, Royal Papworth Hospital NHS Foundation Trust, Cambridge, UK
- ⁵Department of Thoracic Oncology, Royal Papworth Hospital NHS Foundation Trust, Cambridge, UK
- ⁶Department of Oncology, University of Cambridge, Cambridge, UK
- ⁷Department of Nuclear Medicine, King's College Hospital NHS Foundation Trust, London, UK
- ⁸National Heart and Lung Institute, Imperial College, London, UK

Acknowledgements We thank Ms C Jennifer Castedo and Ms Amanda Stone (Royal Papworth Hospital) and Ms Rosalind Simmonds (University of Cambridge) for research nurse support and Mr Adam Peryt, Mr Giuseppe Aresu and Mr Piergiorgio Solli (Royal Papworth Hospital) for assistance with surgical specimen collection. We are grateful to Ms Sarah Bond, Mr Chandra Solanki, Ms Anna Wong and the staff within the Nuclear Medicine Department at Addenbrooke's Hospital and the NIHR/Wellcome Trust Clinical Research Facility, Cambridge.

Contributors NF, NT, LSCL, DR, MS, SDP and CL performed experiments and analysed data. NF drafted the manuscript, with contributions from the other authors as appropriate. EC, AMP and CS designed the study. JB, UH, SH, RCR and DG contributed to study design, analysis and interpretation. RCR recruited patients for the study. EC and CS were responsible for the conduct of the study. All authors discussed the results and commented on the manuscript.

Funding This research was supported by funding from the Medical Research Council [MR/J00345X/1], the Wellcome Trust [098351/Z/12/Z] and the National Institute of Health Research (NIHR) Cambridge Biomedical Research Centre. RCR and DMR are part funded by the Cambridge NIHR Biomedical Research Centre and the Cancer Research UK, Cambridge Centre.

Competing interests EC has received grants and personal fees from GlaxoSmithKline and Roche, and grants from AstraZeneca, MedImmune, and Boehringer Ingelheim, outside of the submitted work. Work in CS' laboratory is supported by research grants from the Wellcome Trust, Medical Research Council, British Heart Foundation, Cambridge NIHR Biomedical Research Centre, AstraZeneca/MedImmune, Bristol Myers Squibb, and GlaxoSmithKline.

Patient consent for publication Not required.

Ethics approval All subjects gave written informed consent. The study was approved by the Cambridgeshire Research Ethics Committee (13/EE/0130) and the Administration of Radioactive Substances Advisory Committee of the UK (83/400/33426) and conducted in accordance with the Declaration of Helsinki.

Provenance and peer review Not commissioned; externally peer reviewed.

Open access This is an open access article distributed in accordance with the Creative Commons Attribution 4.0 Unported (CC BY 4.0) license, which permits others to copy, redistribute, remix, transform and build upon this work for any purpose, provided the original work is properly cited, a link to the licence is given, and indication of whether changes were made. See: <https://creativecommons.org/licenses/by/4.0/>.

ORCID iDs

Stephen Denis Preston <http://orcid.org/0000-0002-6836-3591>
Robert Campbell Rintoul <http://orcid.org/0000-0003-3875-3780>
Edwin R Chilvers <http://orcid.org/0000-0002-4230-9677>

REFERENCES

- 1 Kowanzet M, Wu X, Lee J, *et al*. Granulocyte-Colony stimulating factor promotes lung metastasis through mobilization of Ly6G+Ly6C+ granulocytes. *Proc Natl Acad Sci U S A* 2010;107:21248–55.
- 2 Faget J, Groeneveld S, Boivin G, *et al*. Neutrophils and snail orchestrate the establishment of a pro-tumor microenvironment in lung cancer. *Cell Rep* 2017;21:3190–204.
- 3 Lerman I, Garcia-Hernandez MdelaL, Rangel-Moreno J, *et al*. Infiltrating myeloid cells exert protumorigenic actions via neutrophil elastase. *Mol Cancer Res* 2017;15:1138–52.
- 4 Ebrahem Q, Chaurasia SS, Vasanji A, *et al*. Cross-Talk between vascular endothelial growth factor and matrix metalloproteinases in the induction of neovascularization in vivo. *Am J Pathol* 2010;176:496–503.
- 5 Cools-Lartigue J, Spicer J, McDonald B, *et al*. Neutrophil extracellular traps sequester circulating tumor cells and promote metastasis. *J Clin Invest* (Published Online First: July 2013).

- 6 Kargl J, Busch SE, Yang GHY, *et al.* Neutrophils dominate the immune cell composition in non-small cell lung cancer. *Nat Commun* 2017;8:14381.
- 7 Zhang J, Zhang G, Hu P, *et al.* Vasculogenic mimicry is associated with increased tumor-infiltrating neutrophil and poor outcome in esophageal squamous cell carcinoma. *Onco Targets Ther* 2017;10:2923–30.
- 8 Tregay N, Begg M, Cahn A, *et al.* Use of autologous ^{99m}Tc-labelled neutrophils to quantify lung neutrophil clearance in COPD. *Thorax* 2019;74:659–66.
- 9 Römer W, Fiedler E, Pavel M, *et al.* Attenuation correction of SPECT images based on separately performed CT: effect on the measurement of regional uptake values. *Nuklearmedizin* 2005;44:20–8.
- 10 Schmidt KG, Rasmussen JW, Wedebye IM, *et al.* Accumulation of indium-111-labeled granulocytes in malignant tumors. *J Nucl Med* 1988;29:479–84.
- 11 Fong V, Johnson L. Indium-111 labeled leukocyte accumulation in extremity soft tissue sarcoma. *Radiol Case Rep* 2017;12:383–5.
- 12 Sody S, Uddin M, Grüneboom A, *et al.* Distinct spatio-temporal dynamics of tumor-associated neutrophils in small tumor lesions. *Front Immunol* 2019;10:1419.
- 13 Milette S, Fiset PO, Walsh LA, *et al.* The innate immune architecture of lung tumors and its implication in disease progression. *J Pathol* 2019;247:589–605.
- 14 Tsuchiya Y, Nakao A, Komatsu T, *et al.* Relationship between gallium 67 citrate scanning and transferrin receptor expression in lung diseases. *Chest* 1992;102:530–4.