

## CORRECTION

# Correction: Defined conditions for propagation and manipulation of mouse embryonic stem cells (doi:10.1242/dev.173146)

**Carla Mulas, Tüzer Kalkan, Ferdinand von Meyenn, Harry G. Leitch, Jennifer Nichols and Austin Smith**

There was an error in the supplementary data of *Development* (2019) **146**, dev173146 (doi:10.1242/dev.173146).

Part of Table S1 was omitted from the supplementary data. Table S1 has now been updated.

The updated supplementary data are now available online at <http://dev.biologists.org/content/146/6/dev173146.supplemental>.

The authors apologise to readers for this mistake.

# Defined conditions for propagation and manipulation of mouse embryonic stem cells

Carla Mulas<sup>1,\*</sup>, Tüzer Kalkan<sup>1</sup>, Ferdinand von Meyenn<sup>2</sup>, Harry G. Leitch<sup>3,4</sup>, Jennifer Nichols<sup>1,5</sup> and Austin Smith<sup>1,6,\*</sup>

## ABSTRACT

The power of mouse embryonic stem (ES) cells to colonise the developing embryo has revolutionised mammalian developmental genetics and stem cell research. This power is vulnerable, however, to the cell culture environment, deficiencies in which can lead to cellular heterogeneity, adaptive phenotypes, epigenetic aberrations and genetic abnormalities. Here, we provide detailed methodologies for derivation, propagation, genetic modification and primary differentiation of ES cells in 2i or 2i+LIF media without serum or undefined serum substitutes. Implemented diligently, these procedures minimise variability and deviation, thereby improving the efficiency, reproducibility and biological validity of ES cell experimentation.

**KEY WORDS:** Differentiation, Embryonic stem cells, Pluripotency, Self-renewal

## INTRODUCTION

Mouse embryonic stem (ES) cells are cell lines derived from the pre-implantation epiblast of mouse embryos (Boroviak et al., 2014; Brook and Gardner, 1997; Evans and Kaufman, 1981; Martin, 1981). Under appropriate culture conditions they retain the properties of their tissue of origin and can re-enter normal development when introduced into morula- or blastocyst-stage embryos (Bradley et al., 1984). Moreover, ES cells can readily be genetically modified and clonally expanded. Advances such as genome editing using CRISPR/Cas9 have expanded the opportunities for multiplex and/or complex genome engineering in ES cells (Andersson-Rolf et al., 2017; Yang et al., 2013). Their properties make ES cells uniquely powerful tools, both for generating genetically modified mice, and for experimental dissection of fate choice in pluripotent cells. These attributes depend entirely, however, upon the genetic and phenotypic fidelity of ES cells during propagation.

ES cells were first derived in 1981 by culturing early mouse embryos in conditions optimised for teratocarcinoma stem cells (Evans and Kaufman, 1981; Martin, 1981). The capacity of ES cells to contribute to chimaeras, colonise the germline and engender healthy offspring was demonstrated in 1984 (Bradley et al., 1984), establishing that they are non-transformed and, in all essential aspects, genetically normal. This finding provoked a major effort to introduce targeted genetic modifications into mice by implementing homologous recombination in ES cells. It was not until the 1990s, however, that the technology became relatively routine (for a review, see Capecchi, 2005). A major reason for the time gap is that ES cell cultures were frequently found to be aneuploid, particularly after clonal selection. This problem gradually diminished as appreciation spread of the relatively fastidious demands of ES cell culture compared with other cell types (Robertson, 1987). In particular, ES cells must be passaged frequently to avoid any overgrowth, which confers advantage to genetically abnormal cells.

The original culture conditions for ES cells comprised co-culture with a feeder layer of mitotically arrested embryonic fibroblasts and medium containing carefully screened foetal calf serum (FCS) (Robertson, 1987). This effective but complex system was simplified with the discovery that a major contribution of feeders is to provide the cytokine leukaemia inhibitory factor (LIF) (Smith et al., 1988; Williams et al., 1988). Addition of LIF increases the robustness of ES cell cultures on feeders and this remains a widely used system. LIF can also support ES cell derivation and propagation without feeders in either serum or bone morphogenetic protein (BMP) (Nichols et al., 1990; Ying et al., 2003a). In these conditions, however, the cultures are morphologically heterogeneous. Moreover, the cells show fluctuating expression of several transcription factors known to be expressed in the pre-implantation epiblast and downregulated during peri-implantation development (Chambers et al., 2007; Hayashi et al., 2008; Toyooka et al., 2008). Thus, ES cells in these culture conditions do not correspond to a discrete stage of embryonic pluripotency and the developmental relevance of metastable gene expression remains unclear (Filipczyk et al., 2015; Nichols and Smith, 2012; Smith, 2017). In contrast, ES cells appear morphologically and molecularly relatively homogeneous when maintained in defined medium in which the Erk1/2 signalling pathway is blocked and glycogen synthase kinase 3 is partially inhibited (Wray et al., 2010; Ying et al., 2008). Under this dual inhibition, known as 2i, ES cells exhibit transcriptome similarity to pre-implantation epiblast (Boroviak et al., 2014). Importantly, unlike other conditions, use of 2i (or its predecessor 3i) enables reliable derivation of authentic ES cells from different strains of mice and also from another species, the rat (Buehr et al., 2008; Kiyonari et al., 2010; Li et al., 2008; Nichols et al., 2009a).

We have proposed that the defined culture system using the highly specific 2i inhibitors corrals ES cells in a stable ‘ground state’

<sup>1</sup>Wellcome-MRC Cambridge Stem Cell Institute, University of Cambridge, Gleeson Building, Tennis Court Road, Cambridge CB2 1QR, UK. <sup>2</sup>Department of Medical and Molecular Genetics, King's College London, London SE1 9RT, UK. <sup>3</sup>MRC London Institute of Medical Sciences (LMS), Du Cane Road, London W12 0NN, UK. <sup>4</sup>Institute of Clinical Sciences (ICS), Faculty of Medicine, Imperial College London, Du Cane Road, London W12 0NN, UK. <sup>5</sup>Department of Physiology, Development and Neuroscience, University of Cambridge, Downing Street, Cambridge CB2 3DY, UK. <sup>6</sup>Department of Biochemistry, University of Cambridge, Hopkins Building, Tennis Court Road, Cambridge CB2 1QW, UK.

\*Authors for correspondence (cm623@cam.ac.uk; austin.smith@cscr.cam.ac.uk)

© C.M., 0000-0002-9492-6482; F.v.M., 0000-0001-9920-3075; H.G.L., 0000-0002-3486-8962; J.N., 0000-0002-8650-1388; A.S., 0000-0002-3029-4682

This is an Open Access article distributed under the terms of the Creative Commons Attribution License (<https://creativecommons.org/licenses/by/4.0>), which permits unrestricted use, distribution and reproduction in any medium provided that the original work is properly attributed.

(Martello and Smith, 2014). The 2i platform has been widely exploited to study signalling, gene regulation and network control of naive pluripotency, and the transition path from pluripotency to lineage commitment (Blaschke et al., 2013; Carey et al., 2014; Dunn et al., 2014; Ficiz et al., 2013; Habibi et al., 2013; Hackett et al., 2017; Hayashi et al., 2012, 2011; Kalkan et al., 2017; Kumar et al., 2014; Leitch et al., 2013a; Marks et al., 2012; McEwen et al., 2018 preprint; Mulas et al., 2017; Murakami et al., 2016; Semrau et al., 2017). Importantly, male ES cells maintained in 2i can retain a euploid karyotype and germline chimaera competency over multiple passages with similar efficiency to cells cultured in serum (Ying et al., 2008; Nichols et al., 2009a; Kiyonari et al., 2010; Leitch et al., 2010, 2013b,a; Leeb et al., 2012; Morgan et al., 2013; Jakubczik et al., 2016; Kalkan et al., 2017; Zhang et al., 2018). Interestingly, ES cells show lower global DNA methylation in 2i than in serum (Ficz et al., 2013; Habibi et al., 2013; Leitch et al., 2013a). Female ES cells are vulnerable to severe hypomethylation (Choi et al., 2017a) and loss of methylation imprints in either 2i or serum, which can reduce their chimaera contribution (Yagi et al., 2017). Male ES cells on the other hand can retain relatively normal methylation imprints (Fig. 1), although loss of specific differentially methylated regions (DMRs) has also been reported in both serum and 2i cultures (Choi et al., 2017b; Dean et al., 1998). Genetic background may be one component influencing loss of imprinted DMRs. Another important factor may be levels of culture stress or stimulation due to differences in media composition and cell handling between laboratories, even when using apparently similar conditions. As with any cells *in vitro*, ES cells are inherently liable to acquire genetic and epigenetic adaptations or abnormalities if subjected to untoward selective pressures. Vulnerability to environmental stress may be enhanced in serum-free culture. Consequently, apparently minor variations in media formulation or culture procedures may give rise to discrepant findings. Reports of subpopulations and cell cycle heterogeneity in 2i culture (Kolodziejczyk et al., 2015) may likewise be influenced by particular culture practices.

The field could benefit, therefore, from a stringent methodology for ES cell culture. To that end, we detail here standardised media composition and cell handling procedures for robust propagation and genetic manipulation of mouse ES cells using 2i in defined medium.

## RESULTS AND DISCUSSION

### Propagation of ES cells without serum factors or feeders

#### Aim

The aim of this procedure is to expand undifferentiated cells in 2i or 2i/LIF (Ying et al., 2008). The anticipated outcome is actively growing colonies of uniform size that are evenly distributed across the dish, with no signs of differentiation, and that can be passaged by enzymatic dissociation and expanded continuously. Note that in defined medium cells are generally less tolerant to suboptimal media conditions or environmental perturbations than in the presence of serum, serum substitutes such as KnockOut Serum Replacement (KSR), or feeders. This susceptibility may manifest as spontaneous differentiation and/or cell death. Cells should not be kept out of the incubator any longer than necessary or exposed to varying incubator environments.

#### Materials

Accutase

0.1-0.2% gelatine in PBS or 10 µg/ml laminin in PBS

Wash medium (DMEM/F12 + BSA; see Table S1)

2i or 2i/LIF [hereafter referred to as 2i (±LIF)] in N2B27 (see

Table S1 for media formulation and suggested suppliers)

Haemocytometer

Tissue culture treated plates

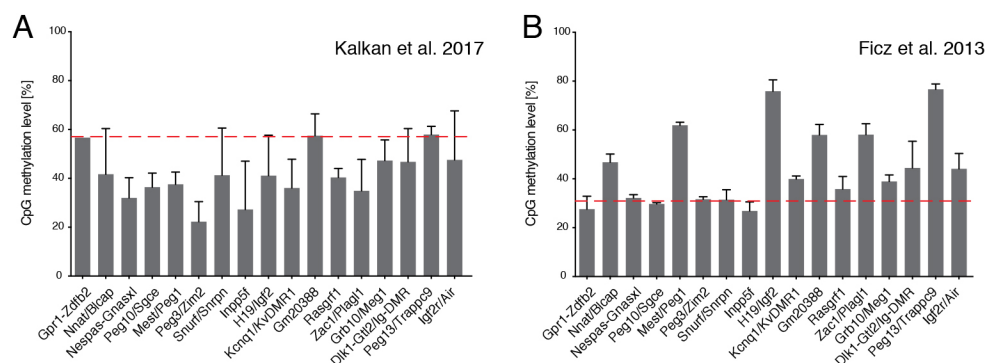
Falcon tubes

Bench centrifuge

Humidified incubator at 7% CO<sub>2</sub> and 37°C

#### Protocol: routine passage of ES cells from a 6-well plate

1. Coat plates or wells with 0.1-0.2% gelatine in the incubator for a minimum of 15 min.
2. Pre-warm necessary volume of 2i (±LIF) or other culture medium, wash medium and Accutase to 37°C. Note: avoid leaving 2i medium or Accutase at 37°C for too long.
3. Remove all gelatine from plates or wells and replace with warm medium. Return to the incubator to pre-equilibrate (not necessary but might help survival, especially for ES cells of non-permissive strains, compromised mutants or when plating at low density). Drying the plates is not necessary.
4. Aspirate medium gently but completely from cells and add 0.5 ml of Accutase per well. Avoid drying the cells.



**Fig. 1. Imprinted control region (ICR) methylation levels in mouse ESCs.** (A,B) Average CpG methylation levels at known ICRs were quantified in whole genome bisulphite sequencing (WGBS) data sets from an ES cell line maintained in 2i (no LIF) (Kalkan et al., 2017; GEO accession number GSE92273) (A) and from an ES cell line maintained in 2i/LIF (Ficz et al., 2013; GEO accession number GSE42923) (B). Both datasets are derived from inbred 129 strain lines. The WGBS datasets were processed as described previously (von Meyenn et al., 2016) and the mean±s.d. of three experiments are shown. The mean global CpG methylation levels in each condition are shown (red dashed line). These observations are in agreement with previous reports that methylation at three DMRs is maintained in an ES cell line derived and maintained in 2i/LIF and an allele-specific assay confirmation of normal methylation pattern at the same regions in 2i/LIF-derived embryonic germ cells (Leitch et al., 2013a).

**Table 1. Volumes and plating cell density for different size wells**

	48-well	24-well	12-well	6-well	T25	T75	T150
Area (cm <sup>2</sup> )	0.95	1.9	3.8	9.5	25	75	150
Cells/well	14.25 K	28.5 K	57 K	142.5 K	375 K	1.125 M	2.25 M
Culture media (ml)	0.2-0.3	0.5-1	1-2	2-4	5-7	~12.5	~25
Accutase/well (ml)	0.060	0.15	0.3	0.5	1	2.5	4
Wash buffer (ml)	1	2	4	6	10	20	25

K,  $\times 10^3$ ; M,  $\times 10^6$ .

- Incubate with Accutase (see Table 1) at room temperature for 4-6 min until colonies decompact and detach. Tap plate to ensure detachment and initial dissociation.
- Add 1 ml of wash buffer and pipette up and down (without touching the bottom of the dish) 10-20 times in order to obtain a single cell suspension. Try to minimise the formation of bubbles. Tip: check under the microscope to ensure single cell suspension.
- Transfer cell/Accutase/wash suspension to a Falcon tube containing 6 ml of wash medium (see Table 1).
- Centrifuge cells at 300 *g* for 3.5 min.
- Aspirate supernatant with care, removing as much liquid as possible without disturbing the pellet.
- Re-suspend cell pellet by pipetting up and down 10-15 times in 0.5-2 ml of 2i ( $\pm$ LIF) medium, ensuring a single cell suspension is obtained.
- Count number of cells/ml and plate appropriate number of cells (see Table 1). Slide plate back and forth across a flat surface to distribute cells evenly, then place carefully in incubator. Do not disturb for several hours.

#### Notes

Cell density will have a significant effect on metabolism, cell cycle and differentiation kinetics, amongst other factors. This is, therefore, a key parameter to monitor. We have observed that culture at high density or colony overgrowth can compromise ability to differentiate and that this effect may become irreversible. Overgrowth of cells in FCS/LIF conditions is also associated with impaired capacity of differentiation and karyotypic instability, but in defined conditions ES cells must be passaged at smaller colony sizes than in FCS- or KSR-containing medium. A single period of overgrowth may induce a permanent change, even if undifferentiated morphology is retained. Specifically, even if overgrown cells regain refractile domed morphology after

passaging, they may be compromised. Two key parameters should be kept relatively constant: (1) the density at which cells are plated after each split; (2) the frequency with which cultures are split. Representative images of cultures ready to be passaged are shown in Fig. 2.

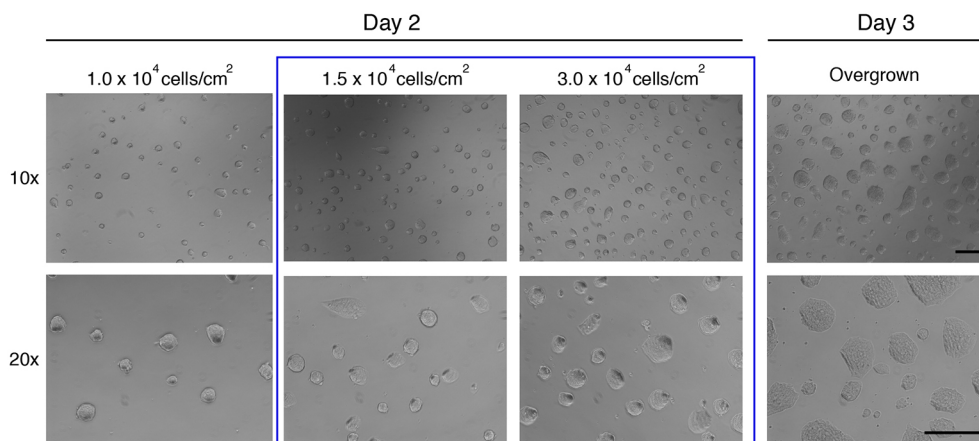
The following cell concentrations are routinely used: for maintenance of cells,  $1.5\text{--}3.0 \times 10^4$  cells/cm<sup>2</sup>; for most experiments:  $1.5 \times 10^4$  cells/cm<sup>2</sup> (see below for differentiation). See also Table 1. It is highly recommended to count cell numbers at every split to avoid overgrowing cells and to monitor growth rate (see Fig. 2 for representative images).

In routine culture, cells should be split every 2-3 days (Fig. 2). Healthy cultures double every 12-14 h (Carey et al., 2014). ES cells in 2i have a substantial proportion of cells in G1 phase (Fig. 3) (Huurne et al., 2017). This is in contrast to FCS cultures, in which ~70% of cells are in S phase (Huurne et al., 2017). Even if plated at lower/clonal density, colonies should not be allowed to grow for more than 4-5 days before passaging.

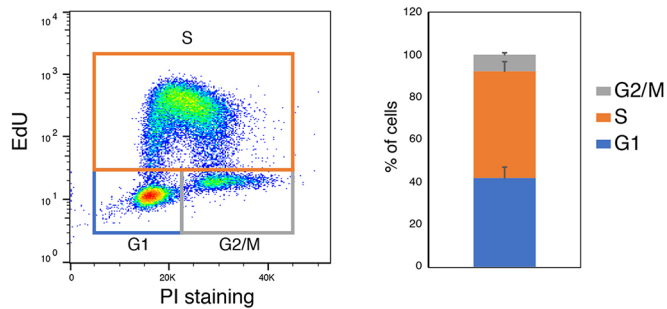
If passaging is delayed beyond 2 days, medium should be renewed on day 3, and any day thereafter.

The quality of N2B27 must be monitored. Signs of suboptimal N2B27 include flattening of colonies, cells detaching, reduced proliferation rate, or increased cell death.

ES cells from certain genetic backgrounds (e.g. C57BL/6) require 2i/LIF in order to be stably propagated long term, whereas others, such as 129 strains, can be propagated in 2i alone or in single inhibitor with LIF. LIF invariably increases colony formation after low-density plating. The addition of LIF alters the kinetics of differentiation, however, delaying the process by ~12 h (Nett et al., 2018). Certain mutant cell lines (e.g. those carrying *Etv4/5* gene deletions), are sensitive to MEK inhibition and show more robust proliferation in CH/LIF (LIF containing CHIR99021) (Kalkan et al., 2019). To convert cells between 2i, CH/LIF and PD/LIF (LIF containing PD0325901), two passages over 4-6 days are sufficient. PD/LIF cells typically show a more flattened morphology than those



**Fig. 2. Representative images of ES cells in 2i at different densities on day 2 and day 3.** Blue box highlights the range of cell densities ideal for splitting. Note refractile colony edges on day 2, which are lost in overgrown colonies at day 3. Scale bars: 0.5 mm.



**Fig. 3. Typical cell cycle profile of day 2 ES cells plated at  $1.5 \times 10^4$  cell/cm<sup>2</sup>.** Cells were stained with propidium iodide (PI) and the Click-iT EdU kit according to manufacturer's instructions. Graph shows quantification over two independent experiments, with two separate lines in each.

grown in conditions containing CH. Because culture in 2i/LIF is most robust, cells can be kept in 2i/LIF for routine passaging, and transferred to other conditions (e.g. 2i or PD/LIF) for one or two passages before experimental analyses. The cell densities reported above work well for all medium conditions.

Cell lines can either be derived in defined conditions (see below) or adapted from conventional FCS/LIF (with or without feeders) conditions. When converting cells from FCS/LIF, we recommend plating cells first in FCS/LIF and changing media to 2i or 2i/LIF after 24 h. Cell death, mainly associated with elimination of differentiating cells, is often observed for the first few days, but stable homogeneous cultures can be established within one or two passages.

Cells should be routinely maintained without any antibiotics, in keeping with good tissue culture practice (Freshney, 1994). Antibiotics can mask low level microbial infections and may have unknown effects on cell metabolism and gene expression.

Mycoplasma testing should be carried out frequently and on all newly generated or obtained lines using PCR assays and commercial kits. If mycoplasma is detected, the cultures should be discarded (Markoullis et al., 2009).

It is important to maintain two types of cell line stock. Primary stocks are the lowest passage cells available [passage (p) 4-8 for embryo-derived cell lines], that have been genotyped, mycoplasma screened, have at least ~80% diploid cells (40XY or 40XX) and show uniform morphology. These are kept in liquid nitrogen for long-term storage. Secondary stocks are more numerous at slightly higher passage number (p10-15). These stocks can be kept short term at  $-80^{\circ}\text{C}$  and are used for routine experiments. Cells should not normally be passaged beyond 30. However, we have generated high contribution chimeras that give germline transmission after multiple passages of mouse ES cells (p30+), embryonic germ cells (p15+), and haploid ES cells (p20+) in 2i/LIF.

Accutase is routinely used because it is gentler than trypsin, results in a single cell suspension and does not require serum inactivation. TrypLE reagents may also be used, although these occasionally result in incomplete dissociation. Trypsin can be used, but we recommend adding ~5% FCS to the wash medium (see Table S1) to ensure complete inactivation, or doubling the volume of wash medium, or increasing the BSA concentration.

Attachment of poorly adherent cells, a feature of some mutants and non-129 strains (e.g. CBA, NOD, DBA, etc.), can be improved by plating onto laminin-coated plates. For this, coat plates with laminin solution (~10  $\mu\text{g}/\text{ml}$  in PBS) for a minimum of 2 h at  $37^{\circ}\text{C}$ , before aspirating the solution and adding the culture medium.

DMEM/F12 and Neurobasal buffer can be used at 5-10%  $\text{CO}_2$ . We use 7%  $\text{CO}_2$  for compatibility with FCS cultures maintained in GMEM. In the presence of B27 we have not observed any advantage of low  $\text{O}_2$  compared with ambient atmosphere.

### Colony-formation assay

#### Aim

The colony-formation assay is a key functional test in ES cell biology. Cultures are dissociated to a single cell suspension and plated at very low (clonal) density, and the number of colonies that form is determined after several days. This assay can be used as a diagnostic tool for media quality control, and experimentally for determining the proportion of undifferentiated cells in a differentiation or reprogramming study or following a genetic/chemical perturbation, or in a modified culture environment. See Fig. 3 for an example.

#### Materials

- Accutase
- 10  $\mu\text{g}/\text{ml}$  laminin in PBS
- Wash medium
- 2i/LIF (see Table S1 for media formulation and suggested suppliers)
- FCS+LIF
- Haemocytometer
- Tissue culture treated plates
- Falcon tubes
- Centrifuge
- Humidified incubator at 7%  $\text{CO}_2$  and  $37^{\circ}\text{C}$
- Alkaline phosphatase staining kit

#### Protocol

1. Coat 12-well plates (provide three wells per sample) with laminin (~10  $\mu\text{g}/\text{ml}$  in PBS) for a minimum of 2 h at  $37^{\circ}\text{C}$ . At clonal density, laminin helps colonies remain attached for the duration of the experiment.
2. Pre-warm Accutase, wash medium, and culture medium (e.g. 2i/LIF).
3. Before starting, aspirate laminin and add 1 ml of 2i/LIF per well. Return plate to the incubator in the meantime to equilibrate medium.
4. Aspirate medium from cells and quickly add appropriate volume of Accutase.
5. Incubate with 1 volume of Accutase at room temperature (RT) for 4-6 min (1 min after the colonies have detached).
6. Add 1 ml of wash medium and pipette up and down 10-20 times in order to obtain a single cell suspension. Tip: check under the microscope to ensure single cell suspension.
7. Transfer cell/Accutase/wash suspension to a Falcon tube containing 5 volumes of wash medium.
8. Centrifuge cells at 300 g for 3.5 min.
9. Aspirate supernatant with care, removing as much liquid as possible without disturbing the pellet.
10. Re-suspend cell pellet in 0.5-2 ml of culture medium (e.g. 2i/LIF).
11. Count number of cells/ml.
12. Plate 400 cells/well in prepared medium. If necessary, carry out two sequential 1:10 dilutions of the cell to improve accuracy, and aim to pipette ~50  $\mu\text{l}$  of cell suspension per well.

- Slide plate back and forth across a flat surface to distribute cells evenly, then place carefully in incubator.
- After 4-5 days, perform alkaline phosphatase staining according to manufacturer's instructions, let dry, image plate and count the number of colonies.

#### Notes

The use of 12-well or 6-well plates is advisable. Plate 400 cells in 12-well plate, and 800 in 6-well plates. It is recommended to perform at least three technical replicates per condition as high variability can occur when plating small numbers of cells. Fluorescence-activated cell sorting of cells directly onto plates can also be used to reduce technical variability.

Colonies can detach easily; therefore, add fixative gently. Leaving cells for >5 days will increase the likelihood of colony detachment.

We also recommend performing colony-formation assays in parallel FCS/LIF medium and analysing plates by alkaline phosphatase staining on day 3/4. Monitor cultures to make sure colonies do not merge. In FCS/LIF conditions, differentiating cells, which would not survive in 2i/LIF, will persist and contribute to mixed or wholly alkaline phosphatase-negative colonies. This experiment can serve as a control for plating efficiency and differentiation potential. Fig. 4 shows representative images of colony assays in 2i/LIF and FCS/LIF.

Typically, we expect wild-type cells maintained in 2i or 2i/LIF to have a clonogenic capacity of ~70-80% when plated in 2i/LIF in optimal media (all alkaline phosphatase positive) with minimal differentiation.

#### Exit from naïve pluripotency

##### Aim

Examining the kinetics of exit from naïve pluripotency can inform whether a particular perturbation (genetic, chemical or mechanical) accelerates, delays or blocks transition to differentiation (for examples, see Kalkan et al., 2019; Li et al., 2017; Martello et al., 2013; Miller et al., 2016; Nett et al., 2018; Niwa et al., 2009; Wray et al., 2011). This system can also be used for genetic screens to identify regulators of pluripotency progression (Betschinger et al., 2013; Leeb et al., 2014; Li et al., 2018; Villegas et al., 2018; Yang et al., 2012).

##### Materials

Accutase

0.1-0.2% gelatine in PBS or 10 µg/ml laminin in PBS (for timecourse studies longer than 48 h, laminin coating is recommended for better attachment)

Wash medium

2i (±LIF) in N2B27

N2B27 (see Table S1)

PBS

Haemocytometer

Tissue culture treated plates

Falcon tubes

Bench centrifuge

Humidified incubator at 7% CO<sub>2</sub> and 37°C

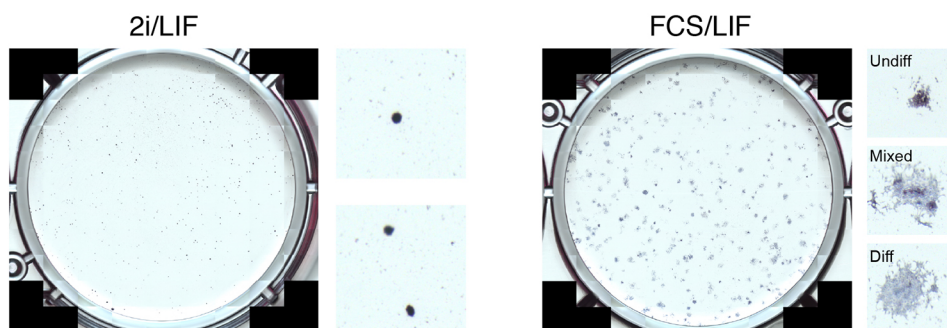
#### Protocol: timecourse study over ~48 h

- Coat 24-well plates or wells with 0.1-0.2% gelatine in the incubator for a minimum of 15 min. Allow for two or three wells per condition (technical repeats). Use a separate plate for each time point.
- Pre-warm necessary volume of 2i (±LIF) or other culture medium, wash medium and Accutase to 37°C. Note: avoid leaving 2i medium or Accutase at 37°C for too long.
- Remove gelatine from plates or wells and replace with warm medium. Return to the incubator to pre-equilibrate (not necessary but might help survival, especially for ES cells of non-permissive strains, compromised mutants or when plating at low density).
- Split cells as indicated previously, re-suspend cell pellet in 0.5-2 ml of 2i (±LIF) and count number of cells/ml.
- Plate 30,000 cells per well of a 24-well plate. Slide plate back and forth across flat surface to distribute cells evenly, then place carefully in incubator. Do not disturb for several hours.
- After 12-24 h, aspirate medium from cells and add 0.5-1 ml of sterile PBS. Aspirate PBS and replace with pre-warmed N2B27. Perform media replacement steps gently to avoid detaching cells.
- Analyse cells at the appropriate time points.

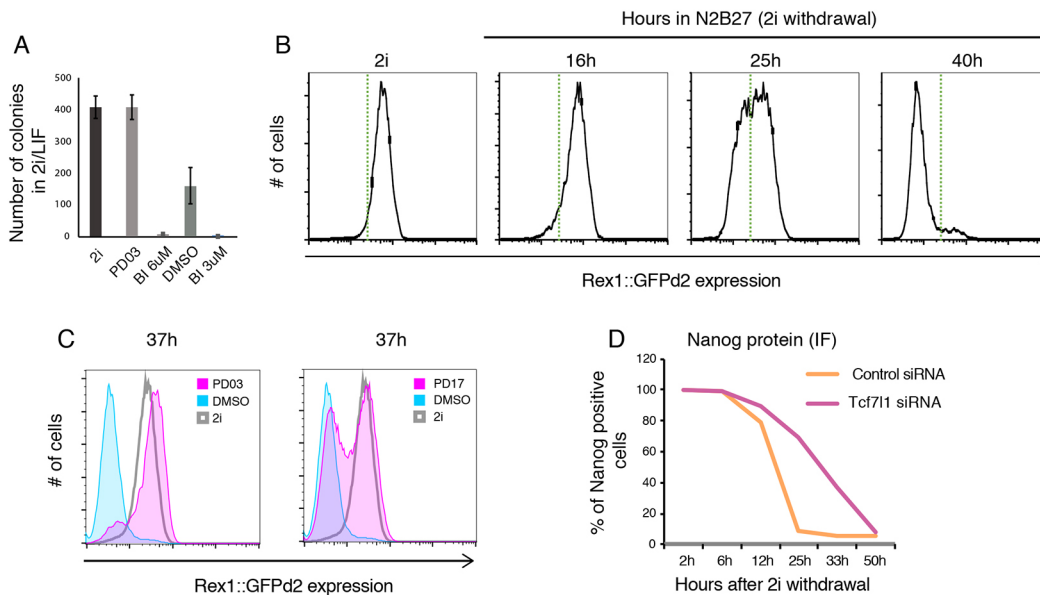
#### Notes

The exact time at which 2i(±LIF) is replaced by N2B27 to initiate exit from naïve pluripotency is flexible. However, it should be kept constant across experiments. Higher density cultures transition more slowly.

Different downstream tests can be performed to determine the kinetics of transition and different time points can be chosen (for examples, see Betschinger et al., 2013; Kalkan et al., 2017; Mulas et al., 2017). Assays include: (1) colony-formation assay (see 'Colony-formation assay' section, Fig. 5A), a key functional assay for exit of the ES cell state, which occurs asynchronously across the population, used to indicate what proportion of the population still remains responsive to naïve ES cell conditions; (2) flow cytometry using reporter cell lines (e.g. Rex1::GFPd2, Nanog-GFP, etc.; Fig. 5B,C); (3) RT-qPCR to determine the expression of genes associated with the different stages of pluripotency or



**Fig. 4. Representative images of clonal assays in 2i/LIF and FCS/LIF conditions.** Insets to the right show magnified views of individual colonies and suggested classification in the case of FCS/LIF.



**Fig. 5. Example data of exit from pluripotency experiment.** (A) Colony-formation assay. Cells were differentiated for 36 h in four different conditions; PD03, MEK1/2 inhibitor PD0325901 (1  $\mu$ M); BI, RSK inhibitor BI-D1870 (3 or 6  $\mu$ M); DMSO, carrier control. (B) Representative downregulation kinetics of Rex1::GFPd2 cells plated in N2B27, starting from 2i (no LIF) conditions. Green dotted line indicates arbitrary threshold. (C) Use of the Rex1::GFPd2 reporter system to determine the effect of two different inhibitors (PD03, MEK1/2 inhibitor PD0325901 at 1  $\mu$ M; PD17, FGF receptor inhibitor PD173074 at 100 nM) on exit kinetics. (D) Fixing and immunostaining for Nanog protein, to quantify the delay in transition associated with knockdown of the Tcf711 transcription factor by siRNA.

differentiation; (4) fixation and immunostaining for proteins associated with ES cells (e.g. Nanog, Klf4, etc.) or transition [Otc6 (Pou3f1), Otx2, etc.] (Fig. 5D).

It is recommended to analyse multiple time points. Typically, ~25–36 h after withdrawal of self-renewal conditions offers a time window during which both delayed and accelerated transition can be evaluated, as ~50% of the wild-type cell population should remain responsive to 2i/LIF and positive for Rex1GFPd2. The exact timing for each experiment will depend on the starting culture condition (e.g. 2i versus 2i/LIF), the batch of N2B27, cell plating density, etc.

## Neural differentiation

### Aim

Monolayer neural differentiation is a simple and well-characterised system (Ying et al., 2003b) and, under the right conditions, an efficient one. Therefore, it can be used to determine competence for differentiation and to examine gene expression dynamics.

### Materials

Accutase  
 ~10  $\mu$ g/ml laminin in PBS  
 Wash medium  
 2i ( $\pm$ LIF)  
 N2B27 (see Table S1)  
 Haemocytometer  
 Tissue culture treated plates  
 Falcon tubes  
 Centrifuge  
 Humidified incubator at 7% CO<sub>2</sub> and 37°C

### Standard protocol

1. Coat plates with laminin (~10  $\mu$ g/ml in PBS) overnight (ideally) or for a minimum 2 h at 37°C.

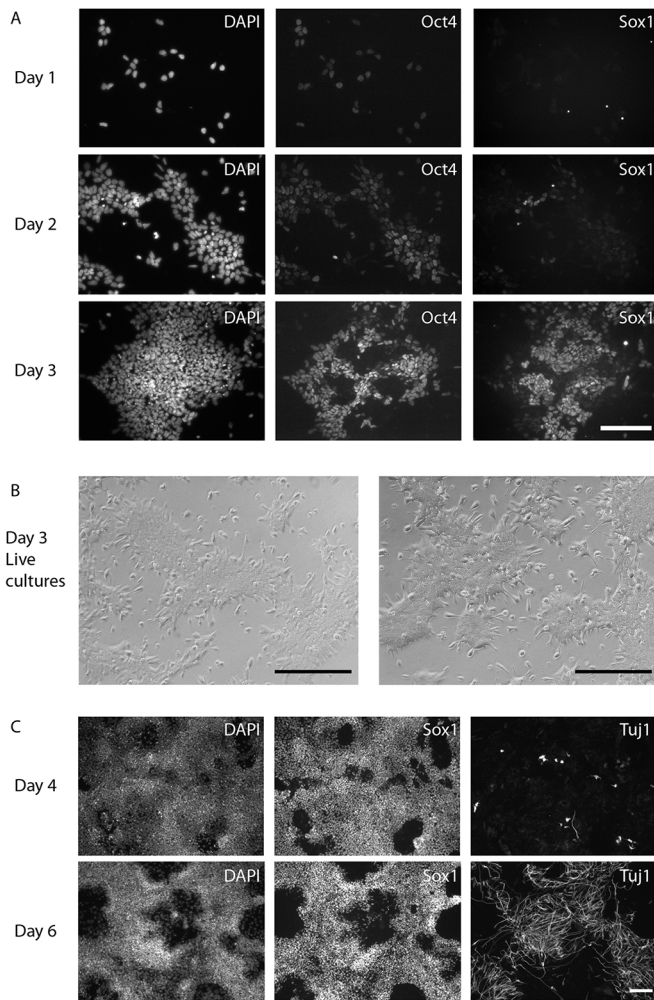
2. Aspirate laminin (do not wash) and add appropriate volume of N2B27. Return to the incubator to pre-equilibrate. Note: pre-equilibration is not necessary but it helps survival.
3. Split cells, re-suspend in N2B27 and count them.
4. Plate directly in N2B27 onto laminin-coated plate at a density of  $1.0 \times 10^4$  cells/cm<sup>2</sup> or  $1.2 \times 10^4$  cells/cm<sup>2</sup> for flow-sorted cells. Optional: adding 1  $\mu$ g/ml laminin directly to N2B27, before plating cells in laminin-coated plates, can help with adhesion.
5. Change media to fresh N2B27 on day 2 and every day thereafter.

### Alternative protocol for poorly adherent cells

1. Coat plates with laminin (~10  $\mu$ g/ml in PBS) overnight at 37°C.
2. Aspirate laminin (do not wash) and add appropriate volume of 2i (+LIF). Return to the incubator to pre-equilibrate. Note: pre-equilibration is not necessary but it helps survival.
3. Split cells as late as possible in the day and plate in 2i or 2i/LIF onto laminin-coated plate at a density of  $1.0 \times 10^4$  cells/cm<sup>2</sup> or  $1.2 \times 10^4$  cells/cm<sup>2</sup> for sorted cells. Optional: adding 1  $\mu$ g/ml laminin directly into N2B27 can help with adhesion.
4. As early as possible on the next day, gently wash cells with PBS before changing the media to N2B27.
5. Change media to fresh N2B27 on day 2 and every day thereafter.

### Notes

Little or no death should be observed until cells become confluent (Fig. 6B). Significant death at day 3 is a sign of poor-quality media (see 'Batch testing N2B27' section) or incorrect plating density. Certain lines may require further optimisation of plating density to minimise cell death. ES cells derived from certain strains might show more cell death compared with 129 or mixed strains. When



**Fig. 6. Representative images of cells at different stages of neural differentiation.** (A) Immunostaining for Sox1 and Oct4 on day 1-3 of neural differentiation. (B) Phase contrast images showing representative morphology of early day 3 neural differentiation for two different cell lines (live cultures). Little cell death should occur during the first 1-3 days of differentiation. Cell death might become apparent once cultures become confluent. (C) Immunostaining for Sox1 and the post-mitotic marker Tuj1 on days 4 and 6 of differentiation. Scale bars: 0.5 mm.

troubleshooting differentiation, we recommend plating cells at three different cell densities (e.g.  $0.75 \times 10^4$  cells/cm<sup>2</sup>,  $1.0 \times 10^4$  cells/cm<sup>2</sup> and  $1.5 \times 10^4$  cells/cm<sup>2</sup>), monitoring cell death at day 3-4 and quantifying Sox1-positive cells at day 4-5. Efficient conditions typically yield ~90% Sox1-positive cultures on day 5 with little non-neural differentiation (Fig. 6C).

The efficiency and timing of differentiation can be assessed by using the Sox1GFP reporter cell line (Ying et al., 2003b) or by measuring the expression of different neural markers such as Sox1 protein by immunofluorescence over time (Fig. 6A,C). When starting from 2i (no LIF) cells, the following changes in transcription factor expression can be anticipated: day 1, predominantly Oct4 (Pou5f1) positive, Sox2 positive, Sox1 negative; day 3, predominantly Sox2 positive (cells should be either Oct4 or Sox1 positive, as their expression is mutually exclusive), 30-50% Sox1GFP-positive cells; day 4-5, mostly Sox1-positive cells and 80-90% Sox1GFP-positive cells. Tuj1 (Tubb3)-positive cells should appear on day ~6. Differentiation of cells cultured in 2i+LIF will be delayed by ~1 day.

Low cell density is essential for efficient differentiation (Fig. 6A). If starting from 2i+LIF or if cells have to be pre-plated before initiating differentiation, there will be more proliferation before exiting pluripotency. Cell density can be lowered to  $0.8 \times 10^4$  cells/cm<sup>2</sup>.

The quality of N2B27 should be monitored. Batches should be specifically tested for neural differentiation. Certain mouse strains benefit from high insulin N2B27 (see Table S1).

Failure to change media regularly, or plating cell density higher than  $1.2 \times 10^4$  cells/cm<sup>2</sup>, can result in mixed differentiation (most obviously indicated by cells undergoing spontaneous contractions) and in persistence of undifferentiated ES cells.

### CRISPR/Cas9 mutagenesis

#### Aim

CRISPR/Cas9 (Cong et al., 2013; Jinek et al., 2012) allows for fast and efficient targeted mutagenesis of ES cells. As per routine ES cell culture, it is important to avoid overgrowing cells as they might develop phenotypes unrelated to the genetic perturbation. It is advantageous to use clones that go through the targeting process but that have not been edited as control cell lines. Depending on the plasmid used, transfected cells can be selected either using drug selection or by sorting for the expression of GFP.

#### Materials

- Accutase
- 0.1-0.2% gelatine
- Wash medium
- FuGene
- gRNA vectors
- FCS (optional)
- N2B27, 3  $\mu$ M CHIR99021, LIF (hereafter referred to as CH/LIF; alternatively use 2i/LIF; see Table S1 for media formulation and suggested suppliers)
- Penicillin and Streptomycin (PenStrep)
- Puromycin (depending on the strategy)
- Haemocytometer
- Tissue culture treated 3.5 cm diameter plates or 12-well plates and 96-well plates for single clone picking
- Falcon tubes
- Centrifuge
- Humidified incubator at 7% CO<sub>2</sub> and 37°C
- Cell sorter (depending on the strategy)

#### Transfection protocol

1. Pre-warm CL, wash medium and Accutase at 37°C. Allow FuGene to equilibrate at RT.
2. Coat 3.5 cm diameter, low-edge dish or wells of a 12-well plate with 0.1-0.2% gelatine and place in incubator for a minimum of 15 min.
3. Prepare transfection mixes as follows. Mix A: 250 ng gRNA 1, 250 ng gRNA 2, 200  $\mu$ l CH/LIF (control: 200  $\mu$ l CH/LIF); Mix B: 1  $\mu$ l FuGene, 200  $\mu$ l CH/LIF (control: 1  $\mu$ l FuGene, 200  $\mu$ l CH/LIF).
4. Split cells as previously indicated.
5. Just before counting cells, combine mix A and B to obtain 400  $\mu$ l transfection reaction. Incubate for 5-15 min at RT (longer incubation might reduce transfection efficiency).
6. Count cells.
7. Aspirate gelatine from wells and plate 300,000 cells in 1.6 ml of CH/LIF.
8. Add 400  $\mu$ l of transfection reaction to cells and mix.



9. Ensure even distribution of cells by sliding the dish across a flat surface vertically and horizontally.

#### Puromycin selection

1. The day after transfection, change media and add CH/LIF+1 µg/ml puromycin.
2. 48 h after transfection, change medium to CH/LIF+0.5 µg/ml puromycin for a further 24 h. This should kill all cells in the control plate.
3. 72 h after transfection, change medium to CH/LIF+PenStrep.
4. Day 6-8 after transfection, pick clones for expansion. The control plate should be almost completely clear. Colony number per plate ranges from 30 to 100+ depending on the gRNA.

#### GFP sorting

1. The day after transfection, change media and add fresh CH/LIF.
2. 48 h after transfection, sort single GFP-positive cells into a 96-well plate in CH/LIF+PenStrep.
3. 72 h after transfection, change medium to fresh CH/LIF+PenStrep.

#### Modifications required for generating knock-in with CRISPR/Cas9

1. Design gRNAs and clone into nickase plasmid [pSpCas9n(BB)-2A-Puro (PX462) V2.0; Addgene plasmid #62987]. The distance between the gRNA target sequences should be kept <200 bp for efficient insertion.
2. Different approaches exist for designing targeting vectors. In our hands, homology arms of 1.5 kb for the 3' end, and 3 kb for the 5' end work efficiently, but shorter homology arms might be used. Both gRNA target sequences should be absent in the targeting vector sequence to avoid cleavage. The amount of targeting vector should be minimised to avoid random integration.
3. A 6-well plate format should be used with a cell concentration of  $1-2 \times 10^5$  cells and a final volume of 1.6 ml before adding transfection reagent.
4. Transfection mixes should be prepared as follows. Mix A: 900 ng gRNA 1, 900 ng gRNA 2, 200 ng targeting vector, 400 µg CH/LIF; Mix B: 6 µl FuGene, 400 µl CH/LIF.

#### Single colony picking and expansion

Typically, 12-24 clones are picked per transfection and this is sufficient to obtain at least two targeted lines.

1. Coat wells of a 96-well plate (plate 1) with 0.1-0.2% gelatine in the incubator for a minimum of 15 min.
2. Pre-warm CH/LIF+PenStrep and Accutase.
3. Add 15 µl of PBS to the bottom of each well of a new 96-well plate (plate 2).
4. Under an inverted or dissection microscope in a flow cabinet, pick individual colonies and deposit in a well of plate 2 (containing PBS). If picking 36+ colonies, it is recommended to pick them in smaller batches. Do not leave colonies in PBS for more than 15-20 min. Pick colonies of different sizes. Change pipette tips between picks.
5. Add 30 µl of Accutase to each well of plate 2 and incubate for ~5-10 min shaking occasionally.
6. Add 150 µl of CH/LIF+PenStrep to each well of plate 2 (containing the picked clones) and pipette up and down to separate colonies into single cells.
7. Aspirate gelatine from plate 1 (previously prepared).

8. Transfer all the cell suspension from plate 2 onto plate 1. Evenly disperse cells by sliding plate vertically and horizontally across a flat surface.
9. Next day, gently change media to fresh CH/LIF+PenStrep by aspirating most of the media, leaving just enough to cover cells. Take care not to detach cells.

#### Expansion of primary clones

1. Coat a sufficient number of wells in a 48-well plate with 0.1-0.2% gelatine solution for at least 15 min at 37°C.
2. Warm Accutase and CL+PenStrep at 37°C.
3. Aspirate gelatine from wells of the 48-well plate and add 200 µl of CH/LIF+PenStrep. Return plate to the incubator to pre-equilibrate.
4. Aspirate media from 96-well plates (plate 1, containing primary clones) and add 50 µl of Accutase. Incubate for ~6 min until all the colonies have detached from the plate.
5. Add 100 µl of CH/LIF+PenStrep and pipette up and down to obtain single cell suspension.
6. Transfer 100 µl of cell suspension to the pre-equilibrated 48-well plate. Ensure uniform distribution of cells before placing in the incubator.
7. Optional: The remaining cell suspension in the 96-well plate can be used for genotyping. Add 150 µl of CH/LIF+PenStrep+1% FCS to each well of the original 96-well plate. Cells can be harvested on day 2 for genomic DNA or mRNA purification and genotyping.

#### Notes

This protocol employs SpCas9(BB)-2A-Puro (PX459) (Addgene plasmid #62988) or pSpCas9(BB)-2A-GFP (PX458) (Addgene plasmid #48138).

Set up transfections late in the day in order to be able to change media within ~16 h post-transfection.

Each transfection will require 300,000 cells per well (round dish with 3.5 cm diameter and a low edge to facilitate colony picking). Include one extra well as a control.

Transfections in N2B27/CHIR99021/LIF (CH/LIF) result in better attachment and improved survival during selection when targeting some genes but in general 2i/LIF is effective. The addition of 1% FCS can help cell adhesion, especially after picking clones, but it is not necessary for most lines.

For efficient knockout, we routinely use two gRNA constructs per gene and FuGene HD transfection reagent (Promega, E2311). Two genes can be targeted at the same time by transfecting four gRNA constructs. In such cases, the amount of FuGene HD can be doubled.

Include a well containing only FuGene and no gRNA as a control for drug selection or cell sorting.

Do not let primary colonies overgrow as this will increase the chances of cell lines becoming compromised.

#### siRNA knockdown in ES cells

##### Aim

Efficient transfection of siRNA for knockdown of single or multiple genes in cells grown in serum-free conditions.

##### Materials

- Accutase
- Wash medium
- 2i (±LIF) (see Table S1 for media formulation and suggested suppliers)

0.1-0.2% gelatine in PBS or ~10 µg/ml laminin in PBS  
 Haemocytometer  
 Tissue culture treated 24-well plates  
 Centrifuge  
 Humidified incubator at 7% CO<sub>2</sub> and 37°C

#### siRNA preparation

1. Dissolve Qiagen FlexiTube siRNAs in 50 µl RNAase-free water to obtain a 20 µM stock solution.
2. Mix equal volumes of each siRNA to obtain a 20 µM pool siRNA solution (each siRNA at 5 µM).
3. Keep on ice throughout.

#### Protocol

Set up late afternoon.

1. Coat a sufficient number of wells in 24-well plates with gelatine solution for at least 15 min at 37°C. If carrying out neural differentiation after siRNA transfection, laminin coating is recommended instead.
2. Incubate 0.5 µl pooled siRNAs in 50 µl of 2i and 0.5 µl Lipofectamine RNAiMAX (Life Technologies, 13778075) in 50 µl of 2i medium. After 2-3 min, mix and incubate for 20 min at RT (while splitting the cells).
3. Split cells and dilute to give 3.0×10<sup>4</sup> cells in 400 µl of 2i for each well.
4. Aspirate gelatine from 24-well plate and combine 100 µl of siRNA solution with 400 µl of cell suspension per well.
5. Incubate overnight.
6. Next morning, wash gently with PBS and change medium and/or collect cells for RT-qPCR to determine knockdown efficiency. Note: differentiation can be initiated at this point by changing medium to N2B27.

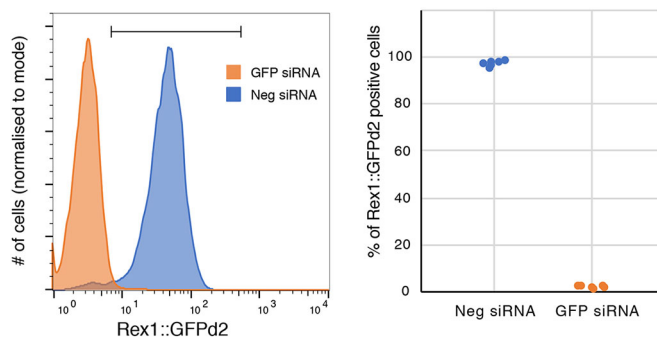
#### Notes

Transfect Rex1::GFPd2 cells with control or *GFP* siRNA and analyse by flow cytometry after overnight incubation. An acceptable transfection efficiency is >90% (Fig. 7). Note that this control is sensitive because GFPd2 protein is destabilised with a half-life of ~2 h.

PenStrep- or serum-containing media cannot be used as this inhibits transfection.

Use the same media to prepare the transfection mix and culture cells (best results in 2i, without LIF).

Do not leave the cells in the transfection media for more than ~16 h or they will die.



**Fig. 7. Transfection efficiency as assessed by knockdown of GFP in Rex1::GFPd2 cells.** Left: representative flow cytometry profile. Right: quantification of the percentage of Rex1::GFPd2 positive cells over four independent experiments.

Cells must be actively replicating; using confluent cells (large colonies) will decrease the transfection efficiency.

Control siRNAs are as follows: GFP (custom-made), GCAAGCUGACCUGAAGUUCA; control (AllStars negative control siRNA, Qiagen, SI03650318).

#### ES cell derivation

##### Aim

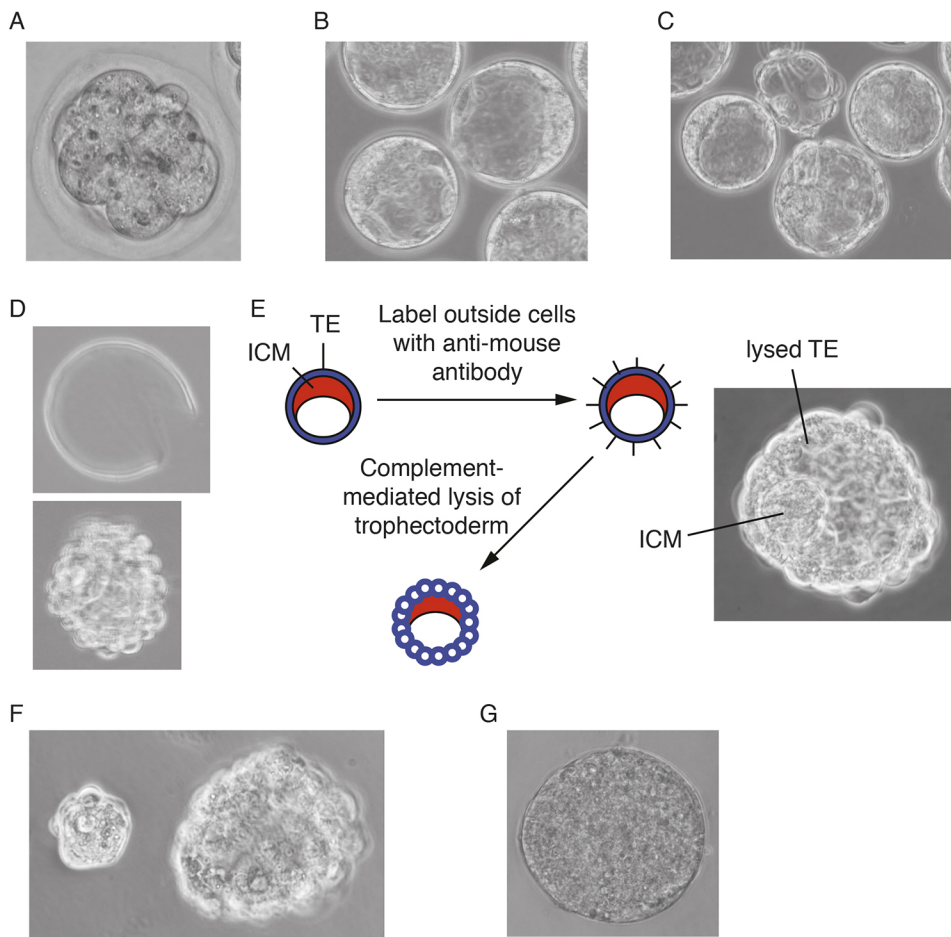
Derivation of ES cell lines from individual embryos, in serum-free conditions (Batlle-Morera et al., 2008; Nichols and Jones, 2017; Nichols et al., 2009b).

##### Materials

KSOM medium (Millipore, MR-106-D) or Blast (Origio, 83060010)  
 M2 medium (Millipore MR-015-D)  
 2i/LIF medium in N2B27 (see Table S1)  
 2i/LIF in M2  
 Tyrode's solution, acidic (Sigma-Aldrich T1788 or Millipore MR-004-D)  
 Rabbit anti-mouse antiserum (Sigma-Aldrich, M5774)  
 Complement sera from guinea pig, lyophilised [Calbiochem (Merck) 234395] or rat serum (as a source of complement, made in-house, not heat inactivated, kept at -80°C)  
 ~10 µg/ml laminin in PBS  
 Accutase  
 Dissecting microscope  
 Laminar flow hood  
 Humidified incubator at 7% CO<sub>2</sub> and 37°C  
 Mouth pipette  
 Pasteur pipettes  
 Organ culture dishes  
 Tissue culture plastics

##### Protocol

1. Pre-equilibrate organ culture dishes containing KSOM (or Blast) +1 µM PDO325901 and 3 µM CHIR99021 (2i/KSOM) in the incubator for at least 15 min. Put PBS in the outer well to prevent evaporation. Flush embryos from oviducts using M2 medium at the 8-cell stage (Fig. 8A) and place into pre-equilibrated 2i/KSOM for 1-2 days until embryos reach the blastocyst stage (Fig. 8B). Note: Blast media (Origio) can be used as an alternative, but N2B27 is not suitable until after blastocyst cavitation.
2. Prepare and pre-equilibrate a fresh organ culture dish containing 2i/LIF in N2B27 (LIF improves success rate, but is not essential) in the central well and PBS in the outer well.
3. Transfer embryos (now at blastocyst stage) to the new dish.
4. Incubate for 1 or 2 more days, depending on when the embryos were transferred to N2B27. A total of 3 days in culture is optimal (Fig. 8C).
5. On day 3 of culture, pre-equilibrate an organ culture dish containing N2B27+20% anti-mouse serum and three dishes containing 400 µl N2B27 in the incubator. Also, gelatinise a 96-well plate. After 20 min, aspirate gelatine and add 200 µl 2i/LIF in N2B27. Leave in the incubator to pre-equilibrate.
6. If the embryos have not hatched, remove the zona pellucida by use of acid Tyrode's solution (Fig. 8D).
7. Place a drop (~300 µl) of Tyrode's solution on a sterile flat dish.
8. Transfer embryos still contained within the zona pellucida to Tyrode's solution with minimal carry over and monitor



**Fig. 8. ES cell derivation process in 2i/LIF.** (A) Flushed 8-cell embryo. (B) Embryos after 1-2 days in culture. (C) After 3 days in culture, embryos start to hatch from the zona pellucida. (D) Hatched blastocyst (bottom) and discarded zona (top). (E) Summary of immunosurgery protocol and image of ideal end-point after complement treatment. (F) Separation of ICM and trophectoderm after immunosurgery. (G) Primary outgrowth cultured for 4 days in 2i/LIF on gelatinised plates (not to scale with embryos). Images reproduced with permission from Cold Spring Harbor Laboratory Press. These images are not published under the terms of the CC-BY licence of this article. For permission to reuse, please see Nichols and Jones, 2017. TE, trophectoderm.

under a dissection microscope until the zona has been dissolved.

9. Once the zona is dissolved, wash embryos in one of the dishes of N2B27.
10. Place embryos in a pre-equilibrated dish containing N2B27+20% anti-mouse serum.
11. Incubate for 30 min to an hour or so in the incubator.
12. Rinse three times in pre-equilibrated N2B27 (or M2, if preferred) by transferring embryos through drops.
13. Add 100  $\mu$ l of freshly thawed rat serum or guinea pig complement to pre-equilibrated 400  $\mu$ l N2B27 to obtain a 20% solution (Fig. 8E,F). Incubate embryos in complement for ~30 min until the trophectoderm begins to lyse (Fig. 8E). Use a Pasteur pipette of the approximate size of the inner cell mass (ICM) to remove it from the lysing trophectoderm (Fig. 8F).
14. Note: it is essential that the time between thawing and use is kept to a minimum because the complement is highly unstable.
15. Place each isolated ICM into a well of the 96-well plate with pre-equilibrated 2i/LIF in N2B27.
16. Incubate for 3-7 days, during which time each ICM will form an ES-like colony (Fig. 8G).
17. To passage primary outgrowths, gently aspirate media from wells, add 50  $\mu$ l Accutase per well of 96-well plate and incubate for ~5 min until primary colonies detach. Add 100  $\mu$ l of 2i/LIF, pipette up and down to obtain single cell suspension, and transfer all content to a new laminin-coated well of a 96-well plate. Next day, change medium to fresh 2i/LIF. Repeat passaging procedure, progressively expanding the line to 48-well, 24-well, etc. At the 24-well stage, passage

lines as indicated in 'Propagation of ES cells without serum factors or feeders' section.

#### Batch testing N2B27

Three main tests are carried out on batches of N2B27 to determine suitability for cell culture:

#### Colony-formation assay

See 'Colony-formation assay' section for a detailed protocol.

1. Culture cells in batches of 2i/LIF in N2B27 side-by-side for two or three passages.
2. For testing, coat a 12-well plate with laminin (~10  $\mu$ g/ml in PBS), three wells per batch.
3. Plate 400 cells/well in 2i/LIF+batch N2B27.
4. After 5 days, perform alkaline phosphatase staining according to manufacturer's instructions and count the number of colonies.
5. Good batches result in >80% clonogenicity.

#### Reporter assays

1. Culture Rex1::GFPd2 cells for two or three passages in 2i batch-N2B27.
2. Analyse by flow cytometry.
3. Good batches result in log-normal distributions.
4. Note: Other cell lines can be used but if the reporter protein is not destabilised (i.e. has a long half-life) cells have to be cultured for longer periods. If reporter cells are not available, immunostaining for Nanog can also be performed. Good batches result in relatively uniform Nanog expression across all cells.

**Table 2. Troubleshooting tips**

Problem	Cause	Solution
Colonies show poor attachment and float away	Residual dissociation media present.	After spinning cell suspension with Accutase and wash buffer, make sure no residue remains. Alternatively, increase wash buffer volume. If using trypsin, add 5% FCS to wash buffer. It is recommended to thaw a new vial of cells.
	Cells were overgrown/underfed; mistreatment for one passage is enough to affect cells permanently.	
	Genetic background, e.g. C57BL/6, non-129 containing mixed strains.	Increase gelatine concentration to 0.2% or add small amount to BSA to medium.
Colonies are of different sizes	Incomplete dissociation of colonies.	Ensure single cell suspension when splitting cells. Verify under the microscope after pipetting to dissociate and before transferring to tube with 5× wash buffer.
	Merging of colonies due to poor distribution.	Ensure cells are evenly distributed before allowing them back in the incubator. Avoid circular motions of the plate and open/close incubators gently until cells have settled.
Flattened/differentiated colonies	Cells grown at too high a density or starved.	Although morphology can be recovered after plating at single cell density, the damage to cells is normally irreversible. The main effect of overgrowing cells is that they can no longer differentiate efficiently. Thawing a new vial of cells is recommended.
	Poor quality N2B27.	Batch test N2B27.

#### Cell survival during differentiation

Although most batches will enable self-renewal of ES cells, differentiation requires specific attention.

1. Follow neural differentiation protocol above and examine cells on day 3–4.
2. Good batches of N2B27 show little cell death until cells reach confluence. Death on day 2–3 is evident in poor batches.

#### Troubleshooting tips

Some useful troubleshooting tips are presented in Table 2.

#### Conclusions

In this paper, we have aimed to provide an accessible and comprehensive set of step-by-step protocols, including all media formulations, to facilitate robust and standardised manipulation of mouse ES cells in defined conditions. We provide guidelines for quality control and troubleshooting tips. The indicated reporter cell lines for calibration are available from the authors. We highlight key parameters that may perturb ES cell behaviour and genetic integrity. In particular, we emphasise the requirement for timely passaging to avoid overgrowth of colonies. Feedback on these protocols and recommendations for further improvement are welcome.

#### Acknowledgements

We thank all past and present members of the Smith and Nichols lab for contribution to development and validation of these protocols and Céline Labouesse for feedback. We acknowledge Graziano Martello for the GFP siRNA sequence, Masaki Kinoshita and Amy Li for contribution to CRISPR/Cas9 methods, and Aleksandar Parvanov for assistance with WGBS analysis. We also acknowledge Balazs Vargaand for testing N2B27 formulations and Sally Lees provided the N2 production sheets. We are grateful to Sally Lees and James Clarke for their high-quality support of the tissue culture facility and for routine testing of media components and sterility.

#### Competing interests

The authors declare no competing or financial interests.

#### Author contributions

Conceptualization: C.M., T.K., A.S.; Methodology: C.M., T.K., H.G.L., J.N.; Formal analysis: F.v.M.; Investigation: C.M.; Writing - original draft: C.M.; Writing - review & editing: C.M., A.S.; Visualization: C.M.; Supervision: A.S.; Funding acquisition: A.S.

#### Funding

This work was funded by the Wellcome Trust (091484/Z/10/Z), the Medical Research Council (G1100526/1), the Biotechnology and Biological Sciences Research Council (BB/G015678/1) and the Seventh Framework Programme (HEALTH-F4-2007-200720). Deposited in PMC for immediate release.

#### Supplementary information

Supplementary information available online at <http://dev.biologists.org/lookup/doi/10.1242/dev.173146.supplemental>

#### References

- Andersson-Rolf, A., Mustata, R. C., Merenda, A., Kim, J., Perera, S., Grego, T., Andrews, K., Tremble, K., Silva, J. C. R., Fink, J. et al. (2017). One-step generation of conditional and reversible gene knockouts. *Nat. Methods* **14**, 287–289.
- Battle-Morera, L., Smith, A. and Nichols, J. (2008). Parameters influencing derivation of embryonic stem cells from murine embryos. *Genesis* **46**, 758–767.
- Betschinger, J., Nichols, J., Dietmann, S., Corrin, P. D., Paddison, P. J. and Smith, A. (2013). Exit from pluripotency is gated by intracellular redistribution of the bHLH transcription factor Tfe3. *Cell* **153**, 335–347.
- Blaschke, K., Ebata, K. T., Karimi, M. M., Zepeda-Martínez, J. A., Goyal, P., Mahapatra, S., Tam, A., Laird, D. J., Hirst, M., Rao, A. et al. (2013). Vitamin C induces Tet-dependent DNA demethylation and a blastocyst-like state in ES cells. *Nature* **500**, 222–226.
- Boroviak, T., Loos, R., Bertone, P., Smith, A. and Nichols, J. (2014). The ability of inner-cell-mass cells to self-renew as embryonic stem cells is acquired following epiblast specification. *Nat. Cell Biol.* **16**, 516–528.
- Bradley, A., Evans, M., Kaufman, M. H. and Robertson, E. (1984). Formation of germ-line chimaeras from embryo-derived teratocarcinoma cell lines. *Nature* **309**, 255–256.
- Brook, F. A. and Gardner, R. L. (1997). The origin and efficient derivation of embryonic stem cells in the mouse. *Proc. Natl. Acad. Sci. USA* **94**, 5709–5712.
- Buehr, M., Meek, S., Blair, K., Yang, J., Ure, J., Silva, J., McLay, R., Hall, J., Ying, Q.-L. and Smith, A. (2008). Capture of authentic embryonic stem cells from rat blastocysts. *Cell* **135**, 1287–1298.
- Capecchi, M. R. (2005). Gene targeting in mice: functional analysis of the mammalian genome for the twenty-first century. *Nat. Rev. Genet.* **6**, 507–512.
- Carey, B. W., Finley, L. W. S., Cross, J. R., Allis, C. D. and Thompson, C. B. (2014). Intracellular  $\alpha$ -ketoglutarate maintains the pluripotency of embryonic stem cells. *Nature* **518**, 413–416.
- Chambers, I., Silva, J., Colby, D., Nichols, J., Nijmeijer, B., Robertson, M., Vrana, J., Jones, K., Grotewold, L. and Smith, A. (2007). Nanog safeguards pluripotency and mediates germline development. *Nature* **450**, 1230–1234.
- Choi, J., Clement, K., Huebner, A. J., Webster, J., Rose, C. M., Brumbaugh, J., Walsh, R. M., Lee, S., Savol, A., Etchegaray, J.-P. et al. (2017a). DUSP9 modulates DNA hypomethylation in female mouse pluripotent stem cells. *Cell Stem Cell* **20**, 706–719.e7.
- Choi, J., Huebner, A. J., Clement, K., Walsh, R. M., Savol, A., Lin, K., Gu, H., Di Stefano, B., Brumbaugh, J., Kim, S. Y. et al. (2017b). Prolonged Mek1/2

- suppression impairs the developmental potential of embryonic stem cells. *Nature* **548**, 219.
- Cong, L., Ran, F. A., Cox, D., Lin, S., Barretto, R., Habib, N., Hsu, P. D., Wu, X., Jiang, W., Marraffini, L. A. et al. (2013). Multiplex genome engineering using CRISPR/Cas systems. *Science* **339**, 819-823.
- Dean, W., Bowden, J., Aitchison, A., Klose, J., Moore, T., Meneses, J. J., Reik, W. and Feil, R. (1998). Altered imprinted gene methylation and expression in completely ES cell-derived mouse fetuses: association with aberrant phenotypes. *Development* **125**, 2273-2282.
- Dunn, S.-J., Martello, G., Yordanov, B., Emmott, S. and Smith, A. G. (2014). Defining an essential transcription factor program for naïve pluripotency. *Science* **344**, 1156-1160.
- Evans, M. and Kaufman, M. (1981). Establishment in culture of pluripotential cells from mouse embryos. *Nature* **292**, 154-156.
- Ficz, G., Hore, T. A., Santos, F., Lee, H. J., Dean, W., Arand, J., Krueger, F., Oxley, D., Paul, Y.-L., Walter, J. et al. (2013). FGF signaling inhibition in ESCs drives rapid genome-wide demethylation to the epigenetic ground state of pluripotency. *Cell Stem Cell* **13**, 351-359.
- Filipczak, A., Marr, C., Hastreiter, S., Feigelman, J., Schwarzfischer, M., Hoppe, P. S., Loeffler, D., Kokkaliaris, K. D., Endeke, M., Schaubberger, B. et al. (2015). Network plasticity of pluripotency transcription factors in embryonic stem cells. *Nat. Cell Biol.* **17**, 1235-1246.
- Freshney, R. I. (1994). *Culture of Animal Cells: a Manual of Basic Technique*. Wiley.
- Habibi, E., Brinkman, A. B., Arand, J., Kroeze, L. I., Kerstens, H. H. D., Matarese, F., Lepikhov, K., Gut, M., Brun-Heath, I., Hubner, N. C. et al. (2013). Whole-genome bisulfite sequencing of two distinct interconvertible DNA methylomes of mouse embryonic stem cells. *Cell Stem Cell* **13**, 360-369.
- Hackett, J. A., Kobayashi, T., Dietmann, S. and Surani, M. A. (2017). Activation of lineage regulators and transposable elements across a pluripotent spectrum. *Stem Cell Rep.* **8**, 1645-1658.
- Hayashi, K., Lopes, S., Tang, F. and Surani, M. (2008). Dynamic equilibrium and heterogeneity of mouse pluripotent stem cells with distinct functional and epigenetic states. *Cell Stem Cell* **3**, 391-401.
- Hayashi, K., Ohta, H., Kurimoto, K., Aramaki, S. and Saitou, M. (2011). Reconstitution of the mouse germ cell specification pathway in culture by pluripotent stem cells. *Cell* **146**, 519-532.
- Hayashi, K., Ogushi, S., Kurimoto, K., Shimamoto, S., Ohta, H. and Saitou, M. (2012). Offspring from oocytes derived from in vitro primordial germ cell-like cells in mice. *Science* **338**, 971-975.
- Huurne, T. M., Chappell, J., Dalton, S. and Stunnenberg, H. G. (2017). Distinct cell-cycle control in two different states of mouse pluripotency. *Cell Stem Cell* **21**, 449-455.e4.
- Jakubczak, F., Jones, K., Nichols, J., Mansfield, W., Cooke, A. and Holmes, N. (2016). A SNP in the immunoregulatory molecule CTLA-4 controls mRNA splicing in vivo but does not alter diabetes susceptibility in the NOD mouse. *Diabetes* **65**, 120-128.
- Jinek, M., Chylinski, K., Fonfara, I., Hauer, M., Doudna, J. A. and Charpentier, E. (2012). A programmable dual-RNA-guided DNA endonuclease in adaptive bacterial immunity. *Science* **337**, 816-821.
- Kalkan, T., Olova, N., Roode, M., Mulas, C., Lee, H. J., Nett, I., Marks, H., Walker, R., Stunnenberg, H. G., Lilley, K. S. et al. (2017). Tracking the embryonic stem cell transition from ground state pluripotency. *Development* **144**, 1221-1234.
- Kalkan, T., Bornelöv, S., Mulas, C., Diamanti, E., Lohoff, T., Ralser, M., Middelkamp, S., Lombard, P., Nichols, J. and Smith, A. (2019). Three transcription factor functions empower formative transition from naïve pluripotency. *Cell Stem Cell* (in press).
- Kiyonari, H., Kaneko, M., Abé, S.-I. and Aizawa, S. (2010). Three inhibitors of FGF receptor, ERK, and GSK3 establishes germline-competent embryonic stem cells of C57BL/6N mouse strain with high efficiency and stability. *Genesis* **48**, 317-327.
- Kolodziejczyk, A. A., Kim, J. K., Tsang, J. C., Illic, T., Henriksson, J., Natarajan, K. N., Tuck, A. C., Gao, X., Buhler, M., Liu, P. et al. (2015). Single cell RNA-sequencing of pluripotent states unlocks modular transcriptional variation. *Cell Stem Cell* **17**, 471-485.
- Kumar, R. M., Cahan, P., Shalek, A. K., Satija, R., DaleyKeyser, A. J., Li, H., Zhang, J., Pardee, K., Gennert, D., Trombetta, J. J. et al. (2014). Deconstructing transcriptional heterogeneity in pluripotent stem cells. *Nature* **516**, 56-61.
- Leeb, M., Walker, R., Mansfield, B., Nichols, J., Smith, A. and Wutz, A. (2012). Germline potential of parthenogenetic haploid mouse embryonic stem cells. *Development* **139**, 3301-3305.
- Leeb, M., Dietmann, S., Paramor, M., Niwa, H. and Smith, A. (2014). Genetic exploration of the exit from self-renewal using haploid embryonic stem cells. *Cell Stem Cell* **14**, 385-393.
- Leitch, H. G., Blair, K., Mansfield, W., Ayetey, H., Humphreys, P., Nichols, J., Surani, M. A. and Smith, A. (2010). Embryonic germ cells from mice and rats exhibit properties consistent with a generic pluripotent ground state. *Development* **137**, 2279-2287.
- Leitch, H. G., McEwen, K. R., Turp, A., Encheva, V., Carroll, T., Grabloe, N., Mansfield, W., Nashun, B., Knezovich, J. G., Smith, A. et al. (2013a). Naive pluripotency is associated with global DNA hypomethylation. *Nat. Struct. Mol. Biol.* **20**, 311-316.
- Leitch, H. G., Nichols, J., Humphreys, P., Mulas, C., Martello, G., Lee, C., Jones, K., Surani, M. A. and Smith, A. (2013b). Rebuilding pluripotency from primordial germ cells. *Stem Cell Rep.* **1**, 66-78.
- Li, P., Tong, C., Mehrian-Shai, R., Jia, L., Wu, N., Yan, Y., Maxson, R. E., Schulze, E. N., Song, H., Hsieh, C.-L. et al. (2008). Germline competent embryonic stem cells derived from rat blastocysts. *Cell* **135**, 1299-1310.
- Li, M. A., Amaral, P. P., Cheung, P., Bergmann, J. H., Kinoshita, M., Kalkan, T., Ralser, M., Robson, S., von Meyenn, F., Paramor, M. et al. (2017). A lncRNA fine tunes the dynamics of a cell state transition involving Lin28, let-7 and de novo DNA methylation. *eLife* **6**, e23468.
- Li, M., Yu, J. S. L., Tilgner, K., Ong, S. H., Koike-Yusa, H. and Yusa, K. (2018). Genome-wide CRISPR-KO screen uncovers mTORC1-mediated Gsk3 regulation in naive pluripotency maintenance and dissolution. *Cell Rep.* **24**, 489-502.
- Markoullis, K., Bulian, D., Hoelzlwimmer, G., Quintanilla-Martinez, L., Heiliger, K.-J., Zitzelsberger, H., Scherb, H., Mysliwicz, J., Uphoff, C. C., Drexler, H. G. et al. (2009). Mycoplasma contamination of murine embryonic stem cells affects cell parameters, germline transmission and chimeric progeny. *Transgenic Res.* **18**, 71-87.
- Marks, H., Kalkan, T., Menafra, R., Denissov, S., Jones, K., Hofemeister, H., Nichols, J., Kranz, A., Stewart, A. F., Smith, A. et al. (2012). The transcriptional and epigenomic foundations of ground state pluripotency. *Cell* **149**, 590-604.
- Martello, G. and Smith, A. (2014). The nature of embryonic stem cells. *Annu. Rev. Cell Dev. Biol.* **30**, 647-675.
- Martello, G., Bertone, P. and Smith, A. (2013). Identification of the missing pluripotency mediator downstream of leukaemia inhibitory factor. *EMBO J.* **32**, 2561-2574.
- Martin, G. (1981). Isolation of a pluripotent cell line from early mouse embryos cultured in medium conditioned by teratocarcinoma stem cells. *Proc. Natl. Acad. Sci. USA* **78**, 7634-7638.
- McEwen, K. R., Linnett, S., Leitch, H. G., Srivastava, P., Al-Zouabi, L., Huang, T.-C., Rotival, M., Sardini, A., Chan, T. E., Filippi, S. et al. (2018). Signalling pathways drive heterogeneity of ground state pluripotency. *bioRxiv* 373373.
- Miller, A., Ralser, M., Kloet, S. L., Loos, R., Nishinakamura, R., Bertone, P., Vermeulen, M. and Hendrich, B. (2016). Sall4 controls differentiation of pluripotent cells independently of the Nucleosome Remodelling and Deacetylation (NuRD) complex. *Development* **143**, 3074-3084.
- Morgan, M. A. J., Muller, P. S. S., Mould, A., Newland, S. A., Nichols, J., Robertson, E. J., Cooke, A. and Bikoff, E. K. (2013). The nonconventional MHC class II molecule DM governs diabetes susceptibility in NOD mice. *PLoS ONE* **8**, e56738.
- Mulas, C., Kalkan, T. and Smith, A. (2017). NODAL secures pluripotency upon embryonic stem cell progression from the ground state. *Stem Cell Rep.* **9**, 77-91.
- Murakami, K., Günesdogan, U., Zyllicz, J. J., Tang, W. W. C., Sengupta, R., Kobayashi, T., Kim, S., Butler, R., Dietmann, S. and Surani, M. A. (2016). NANOG alone induces germ cells in primed epiblast in vitro by activation of enhancers. *Nature* **529**, 403-407.
- Nett, I. R., Mulas, C., Gatto, L., Lilley, K. S. and Smith, A. (2018). Negative feedback via RSK modulates Erk-dependent progression from naïve pluripotency. *EMBO Rep.* **19**, e45642.
- Nichols, J. and Jones, K. (2017). Derivation of mouse embryonic stem (ES) cell lines using small-molecule inhibitors of Erk and Gsk3 signaling (2i). *Cold Spring Harb. Protoc.* **2017**, pdb.prot094086.
- Nichols, J. and Smith, A. (2012). Pluripotency in the embryo and in culture. *Cold Spring Harbor Perspect. Biol.* **4**, a008128-a008128.
- Nichols, J., Evans, E. P. and Smith, A. G. (1990). Establishment of germ-line-competent embryonic stem (ES) cells using differentiation inhibiting activity. *Development* **110**, 1341-1348.
- Nichols, J., Jones, K., Phillips, J. M., Newland, S. A., Roode, M., Mansfield, W., Smith, A. and Cooke, A. (2009a). Validated germline-competent embryonic stem cell lines from nonobese diabetic mice. *Nat. Med.* **15**, 814-818.
- Nichols, J., Silva, J., Roode, M. and Smith, A. (2009b). Suppression of Erk signalling promotes ground state pluripotency in the mouse embryo. *Development* **136**, 3215-3222.
- Niwa, H., Ogawa, K., Shimosato, D. and Adachi, K. (2009). A parallel circuit of LIF signalling pathways maintains pluripotency of mouse ES cells. *Nature* **460**, 118-122.
- Robertson, E. J. (1987). Embryo-derived stem cells. In *Teratocarcinomas and Embryonic Stem Cells: A Practical Approach* (ed. E. J. Robertson), pp. 71-112. Oxford University Press.
- Semrau, S., Goldmann, J. E., Soumillon, M., Mikkelsen, T. S., Jaenisch, R. and van Oudenaarden, A. (2017). Dynamics of lineage commitment revealed by single-cell transcriptomics of differentiating embryonic stem cells. *Nat. Commun.* **8**, 1096.
- Smith, A. (2017). Formative pluripotency: the executive phase in a developmental continuum. *Development* **144**, 365-373.
- Smith, A., Heath, J., Donaldson, D., Wong, G., Moreau, J., Stahl, M. and Rogers, D. (1988). Inhibition of pluripotential embryonic stem cell differentiation by purified polypeptides. *Nature* **336**, 688-690.

- Toyooka, Y., Shimosato, D., Murakami, K., Takahashi, K. and Niwa, H.** (2008). Identification and characterization of subpopulations in undifferentiated ES cell culture. *Development* **135**, 909-918.
- Villegas, F., Lehalle, D., Mayer, D., Rittirsch, M., Stadler, M. B., Zinner, M., Olivieri, D., Vabres, P., Duplomb-Jego, L., De Bont, E. S. J. M. et al.** (2018). Lysosomal signaling licenses embryonic stem cell differentiation via inactivation of Tfe3. *Cell Stem Cell* **24**, 257-270.
- von Meyenn, F., Iurlaro, M., Habibi, E., Liu, N. Q., Salehzadeh-Yazdi, A., Santos, F., Petri, E., Milagre, I., Yu, M. et al.** (2016). Impairment of DNA methylation maintenance is the main cause of global demethylation in naive embryonic stem cells. *Mol. Cell* **62**, 848-861.
- Williams, R. L., Hilton, D. J., Pease, S., Willson, T. A., Stewart, C. L., Gearing, D. P., Wagner, E. F., Metcalf, D., Nicola, N. A. and Gough, N. M.** (1988). Myeloid leukaemia inhibitory factor maintains the developmental potential of embryonic stem cells. *Nature* **336**, 684-687.
- Wray, J., Kalkan, T. and Smith, A.** (2010). The ground state of pluripotency. *Biochem. Soc. Trans.* **38**, 1027-1032.
- Wray, J., Kalkan, T., Gomez-Lopez, S., Eckardt, D., Cook, A., Kemler, R. and Smith, A.** (2011). Inhibition of glycogen synthase kinase-3 alleviates Tcf3 repression of the pluripotency network and increases embryonic stem cell resistance to differentiation. *Nat. Cell Biol.* **13**, 838-845.
- Yagi, M., Kishigami, S., Tanaka, A., Semi, K., Mizutani, E., Wakayama, S., Wakayama, T., Yamamoto, T. and Yamada, Y.** (2017). Derivation of ground-state female ES cells maintaining gamete-derived DNA methylation. *Nature* **548**, 224.
- Yang, S.-H., Kalkan, T., Morrisroe, C., Smith, A. and Sharrocks, A. D.** (2012). A genome-wide RNAi screen reveals MAP kinase phosphatases as key ERK pathway regulators during embryonic stem cell differentiation. *PLoS Genet.* **8**, e1003112.
- Yang, H., Wang, H., Shivalila, C. S., Cheng, A. W., Shi, L. and Jaenisch, R.** (2013). One-step generation of mice carrying reporter and conditional alleles by CRISPR/Cas-mediated genome engineering. *Cell* **154**, 1370-1379.
- Ying, Q.-L., Wray, J., Nichols, J., Batlle-Morera, L., Doble, B., Woodgett, J., Cohen, P. and Smith, A.** (2008). The ground state of embryonic stem cell self-renewal. *Nature* **453**, 519-523.
- Ying, Q.-L., Nichols, J., Chambers, I. and Smith, A.** (2003a). BMP induction of Id proteins suppresses differentiation and sustains embryonic stem cell self-renewal in collaboration with STAT3. **115**, 281-292.
- Ying, Q.-L., Stavridis, M., Griffiths, D., Li, M. and Smith, A.** (2003b). Conversion of embryonic stem cells into neuroectodermal precursors in adherent monoculture. *Nat. Biotechnol.* **21**, 183-186.
- Zhang, M., Leitch, H. G., Tang, W. W. C., Festuccia, N., Hall-Ponsete, E., Nichols, J., Surani, M. A., Smith, A. and Chambers, I.** (2018). Esrrb complementation rescues development of nanog-null germ cells. *Cell Rep.* **22**, 332-339.

**Table S1 - Media recipes**

Three versions of N2B27 are provided. The first recipe, uses in-house N2 with added insulin (Ying and Smith, 2013) to give a final concentration of 12.5µg/ml. In the alternative versions insulin is added separately, either at 20µg/ml (which might aid neural differentiation of ES cells from certain strains, e.g. pure BL6) or at 12.5µg/ml (routine ES cell culture and differentiation). In-house preparation of N2 is recommended as commercial products vary.

<i>Media</i>	<i>Shelf-life and storage</i>	<i>Reagent</i>	<i>Supplier</i>	<i>Volume</i>	<i>Final concentration</i>
<i>N2B27 – recipe for 1000ml. Can be prepared, aliquoted and stored at -80°C</i>	<3 weeks at 4°C, can be made up to 1L, aliquoted and stored at -80°C. Avoid re-freezing.	DMEM/F12	Sigma-Aldrich - D6421	487ml	
		Neurobasal	Thermo Fisher - 21103049	487ml	
	L-Glutamine will degrade easily, avoid leaving at 37°C for long time.  Open bottles of Neurobasal should be used within a month	B27 (50X)	Invitrogen - 17504044	10ml	0.5X
		N2 (with insulin* – 200X)	Made in house – aliquots at -80°C	5ml	1X
		β-mercaptoethanol (50mM stock)	Thermo Fisher - 31350-010	1ml	50µM
		L-glutamine (200mM stock)	Thermo Fisher - 25030081	10ml	2mM
<i>Neural specific N2B27 – high insulin. Recipe for 100ml</i>	<3 weeks at 4°C, can be made up to 1L, aliquoted and stored at -80°C. Avoid re-freezing.	DMEM/F12	Sigma-Aldrich - D6421	47.5ml	
		Neurobasal	Thermo Fisher - 21103049	47.5ml	
	L-Glutamine will degrade easily, avoid leaving at 37°C for long time.  Open bottles of Neurobasal should be used within a month	B27 (50X)	Invitrogen - 17504044	1ml	0.5X
		N2.BV (200X)	Made in house – aliquots at -80°C	0.5ml	1X
		β-mercaptoethanol (50mM stock)	Thermo Fisher - 31350-010	0.1ml	50µM
		L-glutamine (200mM stock)	Thermo Fisher - 25030081	1ml	2mM
		Sodium bicarbonate (7.5% stock)	Thermo Fisher - 25080094	1.33ml	0.1%
		Optional: bovine serum albumin fraction V. (7.5% stock).	Thermo Fisher - 15260037	1.5ml	0.11%
		Insulin, human recombinant, zinc solution (4mg/ml stock)	Thermo Fisher- 12585014	0.5ml	<b>20µg/ml*</b>
		DMEM/F12	Sigma-Aldrich - D6421	47.5ml	

<i>Alternative N2B27 – Recipe for 100ml. Allows using a single version of N2 (N2.BV), and adjusting the insulin concentration separately.</i>	<3 weeks at 4°C, can be made up to 1L, aliquoted and stored at -80°C. Avoid re-freezing.  L-Glutamine will degrade easily, avoid leaving at 37°C for long time.  Open bottles of Neurobasal should be used within a month	Neurobasal	Thermo Fisher - 21103049	47.5ml		
		B27 (50X)	Invitrogen - 17504044	1ml	0.5X	
		N2.BV (200X)	Made in house – aliquots at -80°C	0.5ml	1X	
		β-mercaptoethanol (50mM stock)	Thermo Fisher - 31350-010	0.1ml	50μM	
		L-glutamine (200mM stock)	Thermo Fisher - 25030081	1ml	2mM	
		Sodium bicarbonate (7.5% stock)	Thermo Fisher - 25080094	1.33ml	0.1%	
		Optional: bovine serum albumin fraction V. (7.5% stock). Insulin, human recombinant, zinc solution (4mg/ml stock)	Thermo Fisher - 15260037 Thermo Fisher- 12585014	1.5ml 0.3125 ml	0.11% <b>12.5μg/ml*</b>	
<i>Wash medium (serum-free, for accutase cultures)</i>	~1 month at 4°C	DMEM/F12	Sigma-Aldrich - D6421	500ml		
		bovine serum albumin fraction V (7.5% stock).	Thermo Fisher - 15260037	8ml	0.11%	
<i>Wash medium for trypsin dissociated</i>	~1 month at 4°C	DMEM/F12	Sigma Aldrich - D6421	500ml		
		FCS		25ml	4.7%	
<i>2i/LIF</i>	1 week at 4°C max. Storage at ~6-10°C will result in deterioration	N2B27	See above			
		PD0325901 (10mM stock in DMSO)	Various		1μM	
		CHIR99021 (10mM stock in DMSO)	Various		3μM	
		LIF (stock concentration depends on supplier)	Sigma-Aldrich - L5158 or Millipore ESG1106		100U/mL	
<i>Gelatine</i>			Sigma-Aldrich - G1890		0.1-0.2% in PBS	
<i>Accutase</i>	~2 weeks. Accutase will get deactivated if left at 37°C for a long time (~1-2hrs)		Millipore - SCR005			
<i>In house N2. Recipe for 100ml.</i>	~6 months. Mix gently all components allowing any froth to settle. Aliquot and store at -80°C.	Apotransferrin (100mg/ml stock in water). Add water, swirl and place at 4°C for 1-2hrs until fully	Sigma-Aldrich - T1147, Bio-Techne - 3188-AT	10ml	10mg/ml	



	For best results, do not freeze-thaw.	dissolved. Prepare and use fresh. Quality might vary and requires batch testing.			
		DMEM/F12	Sigma-Aldrich - D6421	53.57	1x
		Insulin (10mg/ml stock)	Various	25ml	2.5mg/ml
		BSA fraction V (7.5% stock)		10ml	0.75%
		Sodium selenite (3mM or 0.518mg/ml stock in water). Filter sterilise 0.2µm filter. Store at -20°C.	Sigma-Aldrich - S5261-10G	0.1ml	3µM (0.518µg/ml)
		Putrescine (160mg/ml stock in water). Filter sterilise 0.2µM filter. Store at -20°C.	Sigma-Aldrich - P5780-5G	1ml	1.6mg/ml
		Progesterone (0.6mg/ml in ethanol). Filter sterilise 0.2µM filter. Store at -80°C.	Sigma-Aldrich - P8783-1G	0.33ml	1.98µg/ml
<i>In house N2.BV (no insulin). Recipe for 114.21ml.</i>	~6 months. Mix gently all components allowing any froth to settle. Aliquot and store at -80°C. For best results, do not freeze-thaw.	Apotransferrin (100mg/ml stock in water). Add water, swirl and place at 4°C for 1-2hrs until fully dissolved. Prepare and use fresh. Quality might vary and requires batch testing.	Sigma-Aldrich - T1147, Bio-Techne - 3188-AT	10ml	8.791mg/ml
		DMEM/F12	Sigma-Aldrich - D6421	92.5	1x
		BSA fraction V (7.5% stock)		10ml	0.66%
		Sodium selenite (3mM or 0.518mg/ml stock in water). Filter sterilise 0.2µm filter. Store at -20°C.	Sigma-Aldrich - S5261-10G	0.12ml	3µM (0.518µg/ml)
		Putrescine (160mg/ml stock in water). Filter sterilise 0.2µM filter. Store at -20°C.	Sigma-Aldrich - P5780-5G	1.2ml	1.688mg/ml
		Progesterone (0.6mg/ml in ethanol). Filter sterilise 0.2µM filter. Store at -80°C.	Sigma-Aldrich - P8783-1G	0.39ml	2.08µg/ml

\* Note that the original B27 recipe contained 2µg/ml insulin. The composition of commercial B27 is not available.