

**The adverse effects of systematic leakage ahead of official sovereign debt rating
announcements***

Alexander Michaelides
Imperial College Business School,
University of Cyprus and CEPR

Andreas Milidonis
Nanyang Technological University
and University of Cyprus

George Nishiotis
University of Cyprus

Panayiotis Papakyriakou
University of Cyprus

September 2014

* This paper has been previously circulated under the title “Sovereign debt rating changes, institutional quality and the stock market”. We thank the University of Cyprus and the Insurance Risk and Finance Research Centre (IRFRC) at Nanyang Business School for a research grant. We also thank George Constantinides, Zhi Da, Bernardo Guimaraes, Peter Hoffmann (discussant), Ravi Jagannathan, Robert Korajczyk, David Lesmond, Nadia Massoud, Marco Pagano, Marios Panayides, Roger Stein (discussant), Lenos Trigeorgis, Avi Wohl and participants at the following seminars and conferences for their comments: Imperial College, Manchester Business School, National University of Singapore, University of St. Gallen, C.R.E.D.I.T, EFMA, SED and Wu Gutmann Center Symposium. We would also like to thank Thomson Reuters for providing Thomson Reuters Marketpsych Indices (TRMI) for our analysis. Michaelides’ contact address is Department of Finance, Imperial College Business School, South Kensington Campus, London, SW72AZ, UK: a.michaelides@imperial.ac.uk (+44 (0) 207 594 9177). Milidonis’ (permanent) contact address is Department of Accounting & Finance, School of Economics & Management, University of Cyprus, P.O. Box 20537, CY-1678 Nicosia, Cyprus: andreas.milidonis@ucy.ac.cy (+357 22 3626). Nishiotis’ contact address is Department of Accounting & Finance, School of Economics & Management, University of Cyprus, P.O. Box 20537, CY-1678 Nicosia, Cyprus: nishiotis.george@ucy.ac.cy (+357 22 893617). Papakyriakou’s contact address is Department of Accounting & Finance, School of Economics & Management, University of Cyprus, P.O. Box 20537, CY-1678 Nicosia, Cyprus: papakyriacou.panayiotis@ucy.ac.cy (+357 22 893605).

The adverse effects of systematic leakage ahead of official sovereign debt rating announcements

September 2014

Abstract

Rating agencies consult with local government officials several days prior to official announcements of sovereign debt rating changes, making information leakage likely. Using cross-country data from 1988 to 2012, we find evidence of information leakage. In particular, we find statistically and economically significant negative daily abnormal stock index returns prior to downgrade announcements. These effects are more pronounced in countries with lower institutional quality, and persist during times with no downgrade rumors and no concurrent bad news in general. A mild post-announcement reversal consistent with overreaction to pre-event downgrade rumors highlights the adverse effects of such leakage, and thus should be a policy concern for capital market regulators.

JEL Classification: G14, G15, G24.

Key Words: sovereign ratings, event studies, institutional quality, information leakage, TRMI.

1. Introduction

When sovereign ratings are being revised by credit rating agencies (CRA), the CRA consults with the rated entity after the rating decision has been approved but before the public announcement. This consultation period can last several days, jeopardizing the confidentiality of information related to the forthcoming, unscheduled sovereign debt rating change. Therefore, it might be associated with economically significant, destabilizing effects for local stock markets.

As an example, consider events around the August 2011 downgrade of Cypriot sovereign government debt by Fitch. On Thursday August 4, 2011 the Cypriot stock market fell by 3.6%, and the next trading day it fell an additional 4.1%. On Saturday, August 6, the Head of the Cyprus Securities and Exchange Commission made a public plea that anyone having information that should be in the public domain immediately disclose it. The following trading day (Monday, August 8) coincided with a public holiday in London (Fitch covers Cyprus out of its London office), and the market fell another 5.69%. Fitch downgraded Cypriot sovereign debt by two notches on Wednesday August 10, 2011, after which the local market rose by 0.6% (it remained unchanged on August 9). Figure 1 shows the economically significant cumulative drop in the Cypriot stock market index, reaching around 30% in the ten days before the announcement. One interpretation of these events is that the imminent downgrade was leaked during the consultation process between the CRA and local authorities before the public announcement.¹

In this paper we examine whether the case of Cyprus – which is suggestive of information leakage – is an isolated incident, or whether it is representative of international experience ahead of official announcements of sovereign debt rating changes. To do so, we collect daily local stock market index

¹ As an example from a more developed market, consider the U.S. government debt rating downgrade by Standard and Poor's (S&P) in August 2011. The ten-day cumulative decline in raw daily returns for the S&P500 reached 11% before the announcement. Anecdotal evidence in the press (Wall Street Journal, September 20, 2011) suggests that information about the imminent downgrade leaked to the market ahead of the actual announcement. The U.S. Securities and Exchange Commission (SEC) launched an investigation into the potential leakage of information, and in its September 30, 2011 summary report identified a number of concerns, which "included apparent failures in some instances to follow ratings methodologies and procedures, to make timely and accurate disclosures, to establish effective internal control structures for the rating process and to adequately manage conflicts of interest." If rating announcements in the highly regulated/monitored capital market of the U.S. are associated with such "concerns", then rating announcements in less regulated/monitored capital markets can be expected to generate even more concerns.

return data for every rated country from the three largest CRAs (Fitch, Moody's and Standard and Poor's) between 1988 and 2012, resulting in a sample of 400 upgrades and 291 downgrades from 65 countries.²

We find statistically and economically significant changes in local stock market returns around official announcements of sovereign debt rating downgrades.³ The cumulative abnormal stock index return over event window [-5,-3] is -0.806%, while that over event window [0, 1] is -0.57%. The negative abnormal returns appear to be partially reversed in the post-announcement period; the net effect over the [-5, +5] window is -0.631%, which includes a statistically significant reversal after the event.⁴

What might explain the pre-announcement stock market declines? One possibility is that information leaks to the market before a CRA's official announcement. When CRAs decide to revise a country's sovereign debt rating, several days before making the official (public) announcement they communicate their intention to officials of the rated country for feedback. During this consultation period information is shared between the two parties, and thus information may be leaked by the CRA⁵ or by local government officials⁶ (IOSCO, 2004). Under the information leakage hypothesis, we would expect to see stronger leakage effects in countries with lower quality institutions. Using a widely accepted measure of transparency, Transparency International's Corruption Perception Index, we find that our results are indeed driven by lower transparency countries, consistent with the information leakage hypothesis.⁷

The above analysis is subject to endogeneity concerns. Stock markets in countries with large pre-event abnormal returns (implying high insider trading) are more likely to be classified as low institutional

² To mitigate the problem arising from simultaneous rating actions across agencies, our primary definition of an event is based on the CRA that moves first in making a public announcement.

³ The economic significance of the market reaction to downgrades appears to be stronger than the market reaction to upgrades, consistent with findings in the corporate bond ratings literature (for example, see Milidonis, 2013, Berwart et al., 2014, and references therein).

⁴ Similarly, the cumulative abnormal return over the [-10, -3] window is -1.64%, while that over the [-10, +10] window including the reversal is -1.21%, both statistically significant.

⁵ In July 2011 (January 2012) Italian prosecutors raided Moody's (Fitch) offices, accusing the two CRAs of leaking information about the sovereign debt downgrades before the public announcements (Rossi, 2012).

⁶ Even in well-regulated markets like the U.S. the idea of "soft corruption" is prevalent in the press as illustrated by the November 2011 60 Minutes "Insiders" Report on CBS (Kroft, 2012).

⁷ The negative pre-event local stock market reaction continues to hold when we use other measures of institutional quality, such as a country's legal origin (common vs. civil law), World Bank development classification (Emerging & Frontier vs. Developed) and law & order score (published by the PRS Group).

quality (see, for example, Khwaja and Mian, 2005). That is, institutional quality may depend on abnormal stock return reactions to public announcements rather than the reverse. To address endogeneity concerns, we employ instrumental variables for institutional quality identified by prior literature (La Porta et al., 1998, Alesina et. al., 2003, Easterly and Levine, 2003) that pass weak instrumental variable tests. The coefficients in the two-stage least squares regressions remain economically and statistically significant. A one standard deviation decrease in the transparency score leads to a 1.25% more negative cumulative abnormal return over the window [-5, -3]. This evidence points to a causal relation between institutional quality and pre-announcement stock market declines, and thus provides further support for the information leakage hypothesis.

An alternative explanation for pre-announcement stock market declines could be the presence of bad news unrelated to a forthcoming sovereign downgrade in the pre-event window. We take the view that news related to a forthcoming downgrade (i.e., a rumor) is associated with information leakage, while news unrelated to the possibility of a downgrade is not. To construct our news variables, we first use Lexis-Nexis to manually identify news stories with references to a downgrade in the ten-day window before the announcement (i.e., rumors). About 40% of downgrade announcements have at least one relevant news item preceding them, thus providing initial evidence that information leakage is taking place. We then complement the manual news search using proxies for the frequency and content (i.e., sentiment) of news recently developed by Thomson Reuters MarketPsych Indices (TRMI). The TRMI measures capture all country-specific news, both related and unrelated to a sovereign downgrade, on a daily basis. Confirming the validity of the news-related measures, we find no abnormal negative sentiment when downgrades are not preceded by rumors, while we find abnormal negative sentiment when downgrades are preceded by rumors. Given that negative abnormal stock market reactions before an announcement persist when there are no rumors in the news and when there is no concurrent unrelated bad news (abnormal reaction to TRMI variables), we conclude that these reactions are due to leakages not observed in the news.

The systematic leakage of information ahead of sovereign debt downgrade announcements appears to be destabilizing for local stock markets, as we document a partial post-announcement reversal. The post-event reversal reduces the overall announcement effect, consistent with a correction of a pre-event overreaction to rumors related to the downgrades.⁸ The destabilizing stock market effects of systematic leakage during the consultation process between CRAs and local government officials ahead of official sovereign debt rating announcements should be a source of concern for capital market regulators.

In an effort to mitigate such effects, in June 2013 the EU passed a law (EU, 2013) requiring that official announcements of sovereign rating changes be scheduled events, and since then sovereign debt rating announcements are prescheduled on Fridays after the close of business. Interestingly, for 2014, the three CRAs have posted on their websites scheduled announcements for European and non-European sovereign entities they rate. However, the new law states that CRAs should give rated entities at least 24-hour notice when the sovereign rating is being revised and an announcement is imminent. To better safeguard the confidentiality of information related to rating actions, the simplest solution might be to dispense with the pre-announcement consultation process altogether, as markets can evaluate the information value inherent in scheduled announcements. Should the consultation process remain, an upper bound on the communication window between the CRA and local government officials could be specified (e.g., no more than 48 hours prior to the announcement) to decrease the likelihood of information leakage.

The literature on the effects of sovereign debt downgrades on stock markets is relatively recent. Our result that leakage is more likely in lower institutional quality countries echoes findings of price manipulation in an emerging stock market (Khwaja and Mian, 2005). Brooks et al. (2004) also find a negative effect of rating downgrades on stock returns, but we differ by providing evidence of information leakage before the official announcement, especially in countries with lower institutional quality. Martell (2005) and Hill and Faff (2010) further find evidence of movements in stock returns before rating

⁸ This result is in line with the theoretical framework of leakage and insider trading of Brunnermeier (2005).

announcements, but we differ from these papers by documenting a causal link between sovereign institutional quality and stock market reactions prior to downgrades, and by conducting an extensive analysis of pre-announcement news to show that our results are driven not by concurrent news unrelated to the downgrade, but rather by the leakage of information.

Afonso et al. (2012) focus on sovereign bond yield responses to rating changes in EU countries, and find evidence of bi-directional causality between yields and rating changes, consistent with event anticipation. Our results emphasize a large decline in the stock market before an official announcement in countries with weaker institutions, a finding that is hard to reconcile with event anticipation in such countries. Building on Kaminsky and Schmukler (2002), Gande and Parsley (2005) find evidence of contagion in government bond yields across countries following sovereign debt downgrades. The TRMI measures can identify instances in which one would expect spillovers from one country to another. We find negative pre-announcement abnormal stock returns even in subsamples without any sovereign downgrade news ahead of the downgrade, or abnormal changes in TRMIs before the announcement. In addition, while contagion is more likely to appear in crisis periods, our results are qualitatively similar in crisis periods (e.g., the Asian, Russian and European sovereign debt crises) and non-crisis periods, thus providing further evidence in support of the leakage hypothesis.

The remainder of the paper is organized as follows. In Section 2, we discuss the institutional background and develop our hypotheses. In Section 3 we discuss our data and provide descriptive statistics. Event study results are reported in Section 4. We test the leakage hypothesis in Section 5 and the alternative hypothesis of concurrent unrelated bad news in Section 6. Section 7 considers policy implications and Section 8 concludes.

2. Institutional background and hypothesis development

The International Organization of Securities Commissions (IOSCO) sets global standards for securities markets. Together with over 120 securities regulators as well as the G20 and the Financial

Stability Board (FSB), IOSCO develops and encourages adoption of regulations consistent with international securities standards. Its combined mandate covers over 95% of the world's markets.

To the best of our knowledge, IOSCO first issued (non-obligatory) guidance on the process CRAs should follow in publicly announcing sovereign rating actions in 2004. The IOSCO “Code of Conduct Fundamentals” (IOSCO, 2004) states that “*Where feasible and appropriate, prior to issuing or revising a rating, the CRA should advise the issuer of the critical information and principal considerations upon which a rating will be based and afford the issuer an opportunity to clarify any likely factual misperceptions or other matters that the CRA would wish to be made aware of in order to produce an accurate rating. The CRA will duly evaluate the response.*”⁹ This guidance encourages CRAs to consult with local government officials prior to an announcement, but recognizes that local oversight committees may choose not to (fully) implement the suggested guidelines based on the environment in which they operate (e.g., Bhattacharya and Daouk, 2002).¹⁰

Today, consultation between CRAs and local government officials is common practice when sovereign ratings are being revised. CRAs and regulators generally strive to maintain the confidentiality of information exchanged during the consultation process ahead of the public announcement.¹¹ However, while a lower bound on the consultation timeframe has been specified in some countries (e.g., 24 hours in the EU; see EU, 2013), in most cases an upper bound on this timeframe is not specified, increasing the likelihood of information leakage. We expect that if there is information leakage and trading before the official announcement of a sovereign rating change, the rated entity's stock market will experience

⁹ In the case of the U.S. downgrade, S&P reportedly made a calculation error that was corrected by Treasury officials before the downgrade announcement, but the S&P continued to publish the downgrade: <http://www.treasury.gov/connect/blog/Pages/Just-the-Facts-SPs-2-Trillion-Mistake.aspx>.

¹⁰ In a revised document, IOSCO (2008) recommends increased transparency by CRAs in justifying their rating actions but does not provide additional guidelines on the consultation process between CRAs and government officials. The update does emphasize, however, that CRA employees should treat information in a strictly confidential manner (section 3b).

¹¹ For instance, CRAs' websites highlight the importance of maintaining the confidentiality of information discussed with government officials of the sovereign entity (S&P 2013), while regulatory efforts to safeguard the confidentiality of information related to upcoming rating actions include CESR (2004), IOSCO (2008), EU (2009), EU (2013) and ESMA (2013).

abnormal stock market reactions before the official announcement.¹² Given the asymmetric stock market reactions between upgrades and downgrades (e.g., Berwart et al., 2014, Milidonis, 2013 and references therein), and in particular the much larger effect associated with downgrades, we focus on downgrade announcements. Further, since countries with lower institutional quality are less likely to adopt and fully enforce global standards, we expect that information leakage ahead of the official announcement is more likely to happen in countries with lower institutional quality, that is, pre-announcement negative abnormal stock market reactions are more likely to be associated with lower institutional quality.

An alternative explanation for negative abnormal reactions before official downgrade announcements would be the presence of concurrent bad news unrelated to the downgrade, such as macro, political or any other market-moving bad news. If there is a large amount of “unrelated news” prior to the downgrade, the information leakage story is less likely to hold.

To test whether unrelated news or information leakage explains negative pre-announcement abnormal stock returns, we classify leakages into two mutually exclusive types. Cases in which the news contains rumors of a forthcoming downgrade before the official downgrade announcement are classified as “observed leakages”, while leakages that do not show up in the news are classified as “unobserved leakages”. In the absence of both sovereign rating rumors (i.e., observed leakages) and unrelated news before the downgrade, a negative pre-announcement abnormal stock market reaction is attributed to unobserved leakages.

3. Data and descriptive statistics

3.1. Sovereign ratings, outlooks and watchlist inclusions

The data set comprises the universe of sovereign ratings, outlook, and watchlist changes by the three largest CRAs, namely, Fitch, Moody’s and S&P, from February 1988 to March 2012. These CRAs hold a substantial fraction of the market but have recently come under intense scrutiny (SEC, 2003; Beaver et al.,

¹² Such leakage of information may be intentional or unintentional and trading on it could be legal or illegal (Bhattacharya, 2013).

2006; SEC, 2008; Cheng and Neamtiu, 2009). While all three CRAs publish letter ratings, those of S&P and Fitch differ from the letter grades of Moody's. Following prior bond rating literature (e.g., Beaver et al., 2006), we transform letter grades of S&P and Fitch (Moody's) as follows: AAA (Aaa) = 1; AA+ (Aa1) = 2; AA (Aa2) = 3; AA- (Aa3) = 4; A+ (A1) = 5; A (A2) = 6; A- (A3) = 7; BBB+ (Baa1) = 8; BBB (Baa2) = 9; BBB- (Baa3) = 10; BB+ (Ba1) = 11; BB (Ba2) = 12; BB- (Ba3) = 13; B+ (B1) = 14; B (B2) = 15; B- (B3) = 16; CCC+ (Caa1) = 17; CCC (Caa2) = 18; CCC- (Caa3) = 19; CC (Ca) = 20; and C (C) = 21. In the case of actions related to sovereign financial distress and default (i.e., ratings of D, RD, SD, etc.), we assign the value 22.

We identify changes in (local and foreign currency) ratings and outlooks by comparing consecutive letter grades for each country. The samples for Fitch, Moody's and S&P begin in 1994, 1986 and 1983, with 318 (201), 336 (185) and 434 (350) changes in ratings (outlooks and watchlist inclusions)¹³, respectively. To test market reactions around the announcement of ratings changes, we match the union of these rating changes with the panel of daily prices for each country's local currency stock market index and the world MSCI index from Datastream. Our analysis begins with the earliest date of the world MSCI index (January 1988) and ends one month after the last change in rating or outlook (March 2012). After removing duplicate events (i.e., ratings changes on the same day) and events with no index return data, the sample of ratings changes comprises 874 events (456 upgrades and 418 downgrades) for 65 countries, and the sample of outlook changes consists of 600 events (334 positive and 266 negative).

Figure 2, Panel A reports the number of changes in sovereign debt ratings for the three largest CRAs (Fitch, Moody's and S&P). Downgrades appear to be more concentrated than upgrades and tend to happen during recessions or periods of global financial turmoil. The 1997 East Asian crisis, the 1998 Russian crisis, the 2001 U.S. recession, and the global financial crisis starting in 2008 figure prominently in the number of downgrades.

¹³ For the remainder of the paper, "outlooks" also refer to watchlist inclusions.

Multiple ratings for the same sovereign around the same time are unlikely to have the same impact on local market returns because they are not independent of each other, that is, they are based in large part on the same information about the sovereign. Intuitively, the first rating or outlook change should be more informative for the stock market than changes occurring soon thereafter. To mitigate problems arising from cross-sectional correlation across rating actions, we follow prior research (e.g., Martell, 2005) and use a “first-mover” filter to construct a “First Mover using Ratings” (FMR) sample. In particular, the FMR sample comprises ratings changes for a sovereign not preceded by another change in rating by any CRA in the previous twenty trading days. This filter yields an event sample of 293 downgrades (from an initial 418) and 400 upgrades (from an initial 456) from 65 countries.

Figure 2, Panel B plots the time-series distribution of the FMR sample. Comparing Panels A and B, we see that limiting attention to first-mover announcements matters, as a substantial number of rating changes are removed, especially during recessions or periods of financial turmoil (1997, 1998, 2001, 2008 and 2011). In sensitivity analysis, we vary the number of days used to define a first-mover. Figure 3 plots the grade-level distribution after the rating change (downgrade or upgrade) both for the FMR sample and for each of the CRAs. The graphs show that rating changes (downgrades and upgrades) are not clustered on specific grade levels.

Outlook changes may also be informative about future changes in ratings, and thus for robustness we also consider changes in outlooks. To do so, we first take the union of changes in ratings and outlooks and apply the first-mover filter. We then construct two samples: 1) the “First Mover using Ratings and Outlooks” (FMRO) sample, which comprises changes in ratings or outlooks not preceded by another change in rating or outlook by any CRA in the twenty trading days prior to the event, and 2) the “ratings-only FMRO” sample, which comprises changes in ratings not preceded by another change in rating or outlook in the twenty trading days prior to the event.

3.2. Daily stock market data

We collect daily aggregate stock index data from Datastream. To maximize coverage we employ the widely used MSCI indices, which are available for 65 countries in our sample. We require that each rating

change have at least 60 daily observations in the estimation period (from day -270 to day -21); this filter removes a few more observations from our dataset, thus giving 397 upgrades and 291 downgrades.

3.3. Institutional quality variables

We use the Corruption Perceptions Index from Transparency International (TI) to proxy for institutional quality. The TI index, which ranks over 170 countries by their perceived levels of corruption as determined by expert assessments and opinion surveys, has been widely credited with putting the issue of corruption on the international policy agenda. The index is available on an annual frequency since 1995, and ranges from 0 (very corrupt) to 10 (almost no corruption). We use the 1995 values for events prior to 1995.

For robustness, we employ other measures of institutional quality. In particular, we use a country's (a) legal origin (common vs. civil law) from La Porta et al. (1998), (b) World Bank development classification (developed vs. emerging and frontier), and (c) law & order index from Political Risk Services Group (PRS). Since the TI index includes elements of these alternative measures, and since our main results are qualitatively similar using all measures, we only report results for the TI index.

To address potential endogeneity or errors-in-variables problems in the institutional quality proxies above, we identify appropriate instrumental variables. We select from the following list: a country's legal origin (common vs. civil law) from La Porta et al. (1998), the ethnicity and religion fractionalization measures developed by Alesina et al. (2003) and a landlocked indicator (Easterly and Levine, 2003).

3.4. News analysis

To distinguish between the information leakage (observed or unobserved) versus unrelated news explanations, we follow a two-step approach. First, we conduct a manual news search before each announcement to identify sovereign downgrade news (Section 3.4.1) related to the forthcoming downgrade (i.e., observed leakages or rumors). Second, we use the country-level Thomson Reuters Marketpsych Indices (TRMI) to capture the frequency and content of economic, political and other news that may affect investor sentiment (Section 3.4.2).

3.4.1. Sovereign downgrade news (SDN)

As mentioned in Section 2, we classify leakages as observed (i.e., traceable in the news) or unobserved. To identify observed leakages, we manually search Lexis-Nexis for news stories prior to each downgrade announcement in which sovereign debt downgrades are rumored to be forthcoming. Specifically, we search for news stories that contain the following keywords: “country name” and “downgrade(s)” and “name of CRA (including spelling variations)” that makes the announcement. As an example of a relevant news story, on Friday March 6, 1998 the Wall Street Journal wrote that “...*A top Russian central bank official signals that Fitch IBCA and Moody’s Investors Service might lower their ratings on Russia’s foreign debt, but says foreign money is still pouring into Russian bond market...*”; Moody’s downgraded Russian sovereign debt on Wednesday March 11, 1998 (four trading days after the observed leakage).¹⁴

We record the number of news stories in Lexis-Nexis over the event window (-10, -1). We then read each news story and identify rumors of forthcoming downgrades as described above. The indicator variable Sovereign Downgrade News (SDN) takes the value of 1 when a downgrade announcement is preceded by at least one relevant news item (i.e., rumor) over the ten days preceding the announcement and 0 otherwise. About 40% of downgrade announcements have at least one relevant news item preceding them, thus providing initial evidence that information leakage is taking place and recorded in the news.

3.4.2. Thomson Reuters MarketPsych Indices (TRMIs)

We complement our manual news search using the newly developed TRMIs. Thomson Reuters in collaboration with MarketPsych LLC use a proprietary algorithm that identifies news stories from Thomson Reuters News Feed Direct, Factiva News, and other third party news sources to construct daily country-specific indices for the frequency (TMRI Buzz) and content (TRMI Sentiment) of news related to the country of interest. Because the TRMIs are based on the universe of news related to a country on a

¹⁴ See Wall Street Journal, “WORLD WATCH -- EUROPE: RUSSIA DEBT RATING MAY BE LOWERED”, Section A, Page 11, Column 1.

daily basis, by construction they include not only news related to a forthcoming downgrade, but also other news unrelated to the downgrade. TRMI Buzz and TRMI Sentiment are available as of 1998.¹⁵

More specifically, for each country-day TRMI Buzz reports the number of news stories related to macroeconomic announcements (internal or external), political influence and other exogenous factors (e.g., natural disasters). Buzz is estimated using a twenty-four hour rolling window. To reduce the impact of outliers in the Buzz variable (skewness=17.19; kurtosis=364.30), we use the log of Buzz (skewness=0.18; kurtosis=1.14).

To construct daily measures of TRMI Sentiment, a proprietary algorithm reads the content of each story relevant to a country of interest and scores it on a normalized scale between -1 and 1. In the finance literature, researchers (e.g., Tetlock et al., 2008) create proxies for sentiment using positive and negative references in the news. TRMI Sentiment builds on this approach using a multi-dimensional proxy for investor sentiment that captures the overall tone of the article as well as that of specific words present in macroeconomic, political and other news.¹⁶ Hence, TRMI Sentiment “transforms” news articles based on their general tone and specific word choice into an index between -1 to +1 that is positively correlated with market sentiment.¹⁷ This transformation is intended to capture not only macro-related information, and other general news relevant to each country, but also feelings such as joy or fear that may affect stock market reactions (e.g., Stambaugh et al., 2012).

4. Event study analysis: Do stock markets around the world move before official announcements?

4.1. Methodology

To examine the impact of changes in sovereign debt ratings and outlooks on local stock index returns, we use short-horizon event study analysis, an approach that is “relatively straightforward and trouble-free”

¹⁵ We would like to thank Thomson Reuters for providing TRMIs for our research.

¹⁶ For more information, see MarketPsych LLC’s website: <https://www.marketpsych.com/>

¹⁷ We estimate the correlation between daily observations of TRMI Sentiment and daily raw returns for all events in our sample including the estimation period for each event. The correlation is positive (0.1173) and statistically significant (p-value<0.001), supporting the validity of TRMI Sentiment.

according to the recent study by Kothari and Warner (2007) on the econometrics of event studies. In particular, we regress each country's major stock index returns, as estimated by a market model, on the MSCI world index returns over the period [-270, -21] relative to event day 0.¹⁸ We then calculate abnormal returns over the [-20, +20] event period as the difference between actual index returns and expected returns. Given the importance of standard errors in our analysis, we use the methodology of Kolari and Pynnonen (2010) for our baseline case, as it addresses both event-induced variance and cross-sectional correlation in abnormal returns. More details on our methodology are provided in the Appendix.

4.2. Empirical results

Table 1, Panel A reports daily average abnormal returns for event window [-10, +10], along with their statistical significance following Kolari and Pynnonen (2010). Results are reported for both upgrades and downgrades using the FMR sample.¹⁹ Several observations stand out.

First, we observe more days with significant stock market reactions around downgrades than upgrades. Second, the economic impact of downgrades appears to be significantly higher than that of upgrades, especially prior to the announcement. Third, both upgrades and downgrades exhibit a market reaction in the expected direction over event window [0, 1], which is again larger for downgrades. The significant abnormal stock market decline prior to downgrade announcements suggests that the case of Cyprus (Figure 1) is part of a global trend of pre-event stock market reactions ahead of official sovereign debt rating announcements. The results are also consistent with prior literature that finds larger absolute market reactions to downgrades than upgrades. We also observe a statistically significant reversal for both upgrades and downgrades starting right after the announcement. In Section 5.4 we provide a more detailed look at reversals.

¹⁸ We do not have the exact timing of the rating announcement, that is, whether it happens before or after the close of business on the event date. We therefore use the window [0, 1] to capture the announcement effect.

¹⁹ We also experiment with separately testing ratings changes beyond one notch, since changes greater than one notch might have a larger market effect than single-notch changes. We did not find statistically different results and therefore report results without differentiating the number of notches.

Table 1, Panel B and Figure 4 present cumulative average abnormal returns (CAARs) over different event windows. For downgrades, we find an economically and statistically significant negative market reaction in the pre-announcement period (CAAR [-5,-3] = -0.81% with p-value < 0.01; CAAR [-10,-3] = -1.64% with p-value < 0.01), as well as a significant negative announcement effect (-0.57%).²⁰ In the post-announcement period (CAAR [+2, +5]), we find a statistically significant positive reaction of 1% (p-value < 0.05) but it does not persist. The overall effect for downgrades as measured by CAAR [-5, +5] (CAAR [-10, +10]) is -0.63% (-1.21%) and statistically significant. For upgrades, there is weaker evidence of positive abnormal returns in the pre-announcement period and no significant effect over the ten or twenty days around an announcement. Because the economic significance of stock market reactions around downgrades is greater than that around upgrades, we focus on downgrades in our analysis on what explains the announcement period abnormal returns.

4.3. Robustness

Before examining whether information leakage (Section 5) or concurrent unrelated bad news (Section 6) explains the announcement period abnormal returns we document above, we conduct several tests to verify the robustness of these results.

First, we test whether changes in outlooks and watchlist inclusions are also informative about future ratings changes. To do so, we repeat our analysis using two alternative samples: the FMRO sample and the ratings-only FMRO sample. Figure 5, Panels A and B plot market-adjusted announcement period cumulative average abnormal returns (CAARs) for these samples. Results are similar to those based on the FMR sample, both in economic and statistical significance (unreported).²¹

Second, we examine whether our results hinge on our definition of first-mover. To do so, we repeat the analysis using *all* CRA changes (i.e., not applying the first-mover twenty-day filter). The results,

²⁰ For the pre-event window we focus primarily on the [-5, -3] window, but we also consider the [-10,-3] window because ESMA (2013) finds that in some instances, ratings were published “*more than five days after the rating decision had been approved by the rating committee and, in at least one case even two weeks after the date of the committee.*”

²¹ Results referred to as “unreported” are available in an online appendix.

displayed in Figure 5, Panel C, show that our conclusions remain unchanged (downgrades show substantial pre-announcement stock market effects, with partial reversal after the announcement, while upgrades show weaker effects), and hence our findings are not sensitive to the definition of first-mover.

Another potential concern is the presence of higher stock market volatility during recessions, which may be linked to an increased number of downgrades (as Figure 2 suggests). For example, downgrades reached a peak in October 2008, during the particularly volatile Great Recession. To address potentially confounding effects during recessionary periods, we repeat the analysis excluding all events after December 31, 2007, focusing on the FMR sample of rating changes during the Great Moderation (1989-2007). The results, presented in Figure 5, Panel D, are again similar to our baseline results (Figure 4), indicating that the event study patterns we document are not driven by the recent financial crisis.²²

Finally, we address potential illiquidity problems due to including emerging and frontier markets in the analysis. Following Lesmond et al. (1999) and Bekaert et al. (2007), we use the percentage of zero returns as a proxy for illiquidity. Specifically, we exclude events that have more than ten days of zero returns over the [-20, +20] testing period. Our results are not affected by this filter.

5. Can information leakage explain the pre-announcement period abnormal returns?

Why do stock markets around the world decline before official sovereign downgrade announcements? We hypothesize that information leakage about a forthcoming downgrade during the consultation process between CRAs and local government officials can explain this pattern, with leakage effects stronger in countries with weaker institutions.

To test this hypothesis, we repeat the analysis above taking into account variation in institutional quality across countries. Our proxy for institutional quality is the Corruption Perception Index from Transparency International (TI). We begin by taking a conservative approach and separating countries by

²² Results are also robust to using the FMRO and ratings-only FMRO samples.

the FMR sample's median TI. We then separate the sample of downgrades into those with high and low TI scores (where a high TI score indicates less corruption) and re-run our analysis for each sample.²³

5.1. Empirical results

In Figure 6 and Table 2 (first column) we report the CAARs for high and low TI downgrades. The results are striking: the pattern of abnormal returns around downgrade announcements that we observe in Section 4 is clearly driven by countries with low institutional quality. In particular, we document a negative and statistically significant CAAR [-5, -3] of -1.59% (p-value < 0.01) for high corruption (low TI) countries and no significant effect for high TI countries. For low TI countries the effect is also present in the longer [-10, -3] pre-event window, with a CAAR of -2.92% (p-value < 0.01).

To test whether negative pre-announcement market returns are indeed stronger for countries with weaker institutions, we run ordinary least squares (OLS) regressions of CARs using the TI score as an explanatory variable and robust Huber-White standard errors (Table 2, 3rd column). We expect that abnormal market reactions before an announcement are positively related to measures of institutional quality (i.e., we expect better institutional quality to be associated with less negative CARs). We find that the coefficient on TI is positive and statistically significant for both pre-event windows (p-value < 0.05). Specifically, as TI decreases (corruption increases), we find more negative CARs before the announcement, consistent with more information leakage and subsequent trading on the leaked information in countries with higher corruption. Our findings also suggest that such leakage is destabilizing since there is a reversal after the event, indicating that the overall effect is not as large. The

²³ We classify our sample of downgrades into high and low TI by splitting at the median value of the annual transparency index. Countries consistently categorized as having low transparency are Brazil, Bulgaria, China, Colombia, Egypt, Ghana, India, Indonesia, Jamaica, Kazakhstan, Kenya, Mexico, Morocco, Nigeria, Pakistan, Philippines, Poland, Romania, Russian Federation, Sri Lanka, Thailand, Trinidad & Tobago, Turkey, Ukraine and Vietnam. Countries consistently categorized as having high transparency are Australia, Bahrain, Belgium, Canada, Chile, Cyprus, Estonia, Finland, Hong Kong, Hungary, Iceland, Ireland, Israel, Japan, Jordan, Korea, Latvia, Malaysia, New Zealand, Portugal, Slovenia, Spain, Sweden, Taiwan and U.S. The following countries are classified as having high or low transparency depending on the year of the downgrade, since their TI score is close to the median: Argentina, Croatia, Czech Republic, Greece, Italy, Peru, South Africa and Tunisia. Results are stronger if we compare the 25th and 75th percentiles. Source: www.transparency.org.

cross-sectional regression of CAR [+2,+5] on TI confirms that the reversal associated with downgrades increases with lower institutional quality. We defer a detailed discussion of the reversal to section 5.4.

5.2. Robustness

Cross-sectional differences in liquidity across countries could be associated with differences in stock market reactions and could therefore confound results. For example, illiquidity may be more likely in countries with lower institutional quality, exacerbating negative CARs in the pre-event period. To address this concern, we first proxy for liquidity using daily stock market turnover, that is, the total daily market volume traded divided by daily market capitalization over the estimation and testing periods. Then, for each event we calculate the time-series average of daily turnover. We next estimate the median value across all upgrades and downgrades in our sample and classify an event as having low (high) liquidity if its time-series average turnover is below (above) the population median. Figure 7 shows that differences in liquidity do not affect our conclusions, since negative pre-announcement abnormal returns are present in both the high and low liquidity samples.²⁴ Another view is that illiquidity is a symptom of corruption rather than an alternative explanation. If this were true, in Figure 7 we would expect to see similar trends to those in Figure 6 as liquidity would be highly correlated with institutional quality.

To address potential concerns that the assumption of Kolari and Pynnonen (2010) is violated (i.e., the event changes the residual correlation in the estimation period), we conduct panel regressions on daily returns separately for high and low TI events (unreported). First, we run a panel regression of daily stock returns on world returns and twenty-one dummy variables for each day in the (-10, +10) event window with robust (White) standard errors clustered at the event level. Second, we add country fixed effects. Third, we add country-day fixed effects. We find that the negative abnormal returns before and the partial reversal after the announcement remain statistically and economically significant for low TI events.

²⁴ Since the MSCI indices do not provide volume data, we use volume data from alternative country stock market indices from Datastream. Stock market reactions before, during and after rating changes using the alternative stock market indices with accompanying volume data are consistent with results using the MSCI indices (unreported).

Next, since low institutional quality events may exhibit increased volatility, our results may be due to higher volatility. To control for the volatility of stock returns, we replace abnormal returns with information (Sharpe) ratios constructed by dividing returns by their standard deviation over the estimation period. We then run panel regressions as described above and find that results continue to hold in all specifications (unreported).²⁵

Our daily estimates of betas could be noisy and add uncertainty to our results. To address this concern, we use several variations of the market model to estimate abnormal returns (unreported). First, we set all country betas equal to one and re-run the analysis. Second, we use full-sample monthly betas in the estimation period market model, that is, the beta estimate is based on the entire time series of data available for a rated sovereign instead of only the year before the testing period. Third, we use raw returns in our estimations. Specifically, we calculate average raw returns in the estimation period and subtract them from actual returns in the testing period to estimate abnormal raw returns (plain raw returns in the testing period are also used). As a final robustness check on the beta estimation, we estimate abnormal returns for countries highly correlated with the U.S. market using a variation of the World index that excludes the U.S., while for non-highly correlated sovereigns we use the World index. We find that the results in Section 5.1 are robust to each of these specifications.

5.3. Endogeneity

As mentioned in the introduction, endogeneity may affect our results. For example, countries with more insider trading are more likely to be classified as low institutional quality and might be associated with a higher probability of information leakage. In such cases, institutional quality depends on abnormal stock return reactions to public announcements rather than the reverse. Thus, a positive correlation between pre- and post-event abnormal stock returns and institutional quality does not necessarily imply that institutional quality causally affects the abnormal return patterns we document. Errors-in-variables problems can also affect our conclusions. For example, a proxy for institutional quality may be an

²⁵ Splitting the sample into above- and below-investment grade rating groups and controlling for volatility yields qualitatively similar results (unreported).

imperfect measure of true institutional quality, in which case regressing CARs on the proxy will generate biased estimates depending on the degree of measurement error.

To address these problems and give a causal interpretation to the documented correlations, the classic solution is to employ instrumental variables (IVs). Accordingly, we conduct two-stage least squares (TSLS) regressions of pre- and post-announcement CARs on potentially endogenous proxies for institutional quality. We focus on TI for brevity; results are similar using other measures of institutional quality (legal origin (common vs. civil law) from La Porta et al. (1998), World Bank development classification (developed vs. emerging and frontier) and the PRS law & order index).

We start by identifying four candidate instruments for our regressors. First, we consider a country's legal origin, where an indicator takes the value of 1 for a common law system and 0 otherwise (La Porta et al., 1998). Next, we consider the ethnicity and religion fractionalization measures of Alesina et al. (2003). Our fourth candidate instrument is the landlocked indicator of Easterly and Levine (2003). These four variables are arguably exogenous because they were determined many decades before the events we study. Moreover, legal origin, fractionalization and geography are good candidates for random variation that might be correlated with the endogenous variables of interest (measures of institutional quality) but is not directly related to the dependent variable (CARs).

To identify the best instruments for TI, we follow Baum et al. (2011) and test for model under-, weak- and over-identification as well as for redundancy of the IVs. We first assume that the four instruments are valid. The null under the redundancy test is that the instrument of interest is redundant. As shown in Table 3, Panel A, three of the four candidate instruments are valid (p-values < 0.01; Round 1). We repeat this procedure until no redundant instruments appear (Round 2). In the first step we find that all but one candidate instrument (landlocked) is statistically significant at a p-value of 1% or better, and thus in the second step we omit this variable. Therefore, in the TSLS estimation, we employ three non-redundant IVs for TI: common vs. civil law, ethnic fractionalization and religion fractionalization.

Results of the TSLS analysis for the pre-event period are reported in Table 3, Panel B using CAR [-10,-3] and CAR [-5,-3] as the dependent variables. As in the OLS analysis, we expect a positive

coefficient on TI in the pre-event period. We find that the coefficient on TI is indeed positive and statistically significant for both pre-announcement event windows. The results are economically significant as well, with a one-standard deviation (2.1) decrease in the TI index leading to a 1.25% (p-value < 0.01) decrease in CAR over the [-5,-3] period, where all identification tests are again satisfied.²⁶

In unreported analysis we also find statistically and economically significant effects when we use the other proxies for institutional quality (p-values < 0.05). Specifically, emerging/frontier countries (using common law, ethnic fractionalization and landlocked as instruments) generate CARs that are 2.40% lower than those of developed countries, and the one-standard deviation effects for the PRS law & order index (using common law and ethnic fractionalization as instruments) is a 0.86% decrease in CAR.

The statistical tests strongly reject under-identification (UID). With respect to the weak IV (WID) hypothesis, both the Cragg-Donald (for i.i.d. error disturbances) and Kleibergen-Paap (for non-i.i.d. errors) test statistics exceed the Staiger and Stock (1997) thresholds to reject the hypothesis of weak IVs. The Cragg-Donald and Kleibergen-Paap tests further reject the weak IV hypothesis when compared to the Stock and Yogo (2005) relative bias and relative size tests, though strictly speaking the values for the Kleibergen-Paap test should be compared to the i.i.d. case. We thus reject the weak IV hypothesis. The Hansen J-statistic does not reject over-identification (OID) at the 5% level.²⁷

5.4. Rumors and the post-announcement reversal

In Brunnermeier's (2005) market microstructure model on the effects of information leakage and trading behavior on stock returns, the stock price reflects early-informed traders' short-run signals of an upcoming news announcement (i.e., rumor) as well as other traders' unrelated long-run private information. Brunnermeier (2005) shows that traders with access to non-public information can exploit this information twice: first, by trading on this information before the actual public announcement, and

²⁶ Results also hold using the FMRO and ratings-only FMRO samples.

²⁷ We also test whether the post-event reversal is caused by institutional quality using the same procedure as above for the CAR [+2, +5] window. Results using the TI index remain negative and statistically significant (at the 10% level), but do not hold across the other measures of institutional quality we use. We defer a detailed investigation of the reversal to section 5.4.

then by taking the opposite position after the public announcement.²⁸ In the case of bad news, this pattern is referred to as “SELL on the RUMOR, BUY on the NEWS.” Brunnermeier (2005) also shows that traders have incentives to trade more aggressively before the announcement, which might be costly in the short run, but can increase their overall profit upon reversing their position after the announcement. This trading behavior can lead to an over-reaction before and a partial reversal after the public announcement, resulting in destabilizing effects around the announcement. This pattern is expected to be stronger when trading becomes so intense (perhaps an indication of informed trader aggressiveness) that rumors of the upcoming announcement make it into the news.

To test the role of rumors in our context, we re-run the event study separately for downgrades preceded by a rumor of the upcoming downgrade in the ten days before the official announcement (SDN=1) and downgrades not preceded by a rumor (SDN=0). Figure 8 shows the CAAR [-10, +10] for the subsample of low institutional quality events with SDN=1 (n=57) and SDN=0 (n=92). In Table 4, Panel A we report the daily average abnormal stock returns and their statistical significance, and in Panel B we report announcement period CAARs. The results appear to be consistent with Brunnermeier’s (2005) empirical implications discussed above. While the negative pre-announcement abnormal return is statistically significant regardless of whether rumors of the upcoming downgrade are in the news, the post-announcement reversal is only statistically detectable when rumors make it into the news²⁹, implying an overreaction before and a subsequent correction after the announcement. The reactions in the two subsamples at the time of the announcement is also telling: the announcement in the no-rumor case (SDN=0) is accompanied by a negative stock market reaction, indicating that the announcement still contains a negative surprise (CAAR [0,+1] of -1.54%, p-value < 0.01), while the stock market reaction in

²⁸ Hirshleifer et al. (1994) also generate trade reversals, where risk-averse insider traders unwind part of their risky position as soon as their private information is revealed to other traders.

²⁹ CAAR [+2, +5] = +1.67% and CAAR [+2, +10] = +3.19%, both statistically significant.

the rumor case (SDN=1) is muted upon the announcement but still followed by a reversal (resonating the empirical findings in Bhattacharya et al., 2000).³⁰

5.5. Summary

Section 5 provides robust evidence in support of the leakage hypothesis. The pre-event stock market reaction is stronger in countries with lower institutional quality, a finding that holds even after incorporating outlook changes, controlling for liquidity differences, volatility changes, alternative definitions of the market model and possible endogeneity bias. We also show evidence that the post-announcement reversal is consistent with an over-reaction to downgrade rumors before the announcement.

6. Can concurrent unrelated bad news explain the pre-announcement period negative abnormal returns?

In this section we test an alternative hypothesis for why stock markets decline before official sovereign downgrade announcements, namely, the presence of concurrent unrelated bad news in the pre-announcement window. To do so, we conduct event studies using the daily values of TRMI Buzz and TRMI Sentiment around sovereign downgrade announcements. If the pre-announcement period negative abnormal returns are driven by unrelated bad news rather than information leakage (i.e., rumors), we would expect to find an abnormal increase in Buzz and/or an abnormal decrease in Sentiment in the pre-event window, especially in the sample without rumors (SDN=0).

6.1. Empirical results

To measure abnormal changes in the news variables (TRMI Buzz and TRMI Sentiment), we estimate over the window [-40, -11] and test over the window [-10, +10]. To estimate abnormal (log) Buzz, we subtract the average (log) Buzz over the estimation period from the daily (log) Buzz values in the testing

³⁰ For completeness, we test for statistically significant differences between CAARs of the two subsamples (SDN=0 and SDN=1) using t-tests. We find: (a) no statistical differences in market reactions in the pre-event period; (b) at the event, there is a 1.3% more negative market reaction when SDN=0 (p-value < 0.05); (c) the [+2,+10] reversal when SDN=1 is larger by 2.67% (p-value < 0.05); (d) the overall effect when SDN=0 is more negative for [-10,+10] by 3.37% (p-value < 0.10).

period.³¹ To estimate abnormal Sentiment, we subtract the average sentiment in the estimation period from actual sentiment. Given that the TRMI variables begin in 1998, the total number of SDN=0 (SDN=1) events matched with available TRMIs after 1998 is 46 (36). For completeness and because of the change in sample size, we also repeat the main event studies for these two subsamples and report both average abnormal returns and CAARs in Table 5 (Panels A and B, respectively). Standard errors and p-values are estimated following Kolari and Pynnonen (2010).

Two conclusions are drawn from the results in Table 5: (a) TRMI Buzz and TRMI Sentiment, as well as the SDN classification, are validated, and (b) evidence that concurrent unrelated bad news cannot explain the pre-announcement period negative abnormal returns is obtained. Confirming the validity of the news-related variables, we find no abnormal Sentiment or Buzz before no-rumor downgrades (SDN=0), whereas we find negative abnormal sentiment before downgrades preceded by rumors (SDN=1). For example, in Panel B, the Cumulative Average Abnormal Index (CAAI) for Sentiment in the window [-5, -3] is negative with p-value < 0.01 when SDN=1. Both variables exhibit significant abnormal values at the announcement in both subsamples (i.e., SDN=0 and SDN=1), as expected: Table 5, Panel B reports positive (negative) abnormal reactions for Buzz (Sentiment) over the [0, +1] window (p-value < 0.01) for both subsamples.³²

Beyond establishing the validity of the news-related variables, the results in Table 5 also show that the negative pre-announcement abnormal return persists both in the absence of rumors on the upcoming downgrade as well as in the absence of concurrent unrelated bad news, as documented by the insignificant abnormal Buzz and Sentiment in all pre-event windows when SDN=0.³³ We therefore conclude that concurrent unrelated bad news cannot explain our results. Interestingly, when SDN=1, Sentiment is more

³¹ Thomson Reuters recommends using observations that have a Buzz value (i.e. number of news items per day referring to the country of interest) greater than 500. This is because these news items are read by TRMI's proprietary algorithm to construct TRMI Sentiment. Hence, to improve accuracy of the Sentiment variable, TRMI recommends using observations with a daily Buzz value greater than 500. For more information about the TRMI Sentiment construction, see MarketPsych LLC's website: <https://www.marketpsych.com/>

³² The abnormal reaction of TRMIs on the announcement provides further validation evidence.

³³ Table 5, Panel A does not report a single day with significant abnormal Buzz or Sentiment in the pre-event window when SDN=0.

affected than Buzz before the announcement, indicating that Sentiment is influenced more by rumors than unrelated news.

Notice that Buzz and Sentiment could be informative about spillovers from one country to another. For example, a downgrade in one country might be perceived as a signal about a potential downgrade in a neighboring country. Such a signal would likely generate discussion in the news, and hence would be picked up by the TRMI variables. Gande and Parsley (2005) and Afonso et al. (2012) find evidence for contagion in government bond yields across countries following sovereign debt downgrades. Focusing on sovereign yield responses to rating changes in EU countries, Afonso et al. (2012) also offer evidence for bi-directional causality between yields and rating changes, consistent with event anticipation. Our results emphasize a large decline in the stock market before an official announcement in countries with weaker institutions, a finding that is hard to reconcile with the anticipation hypothesis operating in such countries. More importantly, we find that negative abnormal stock returns continue to arise in samples without any rumor related to the forthcoming downgrade or abnormal changes in the TRMI variables (i.e., without any news, related or unrelated) before the announcement that a spillover effect from a public downgrade of another country's sovereign debt would presumably generate, further suggesting the lack of an anticipation effect.

As a last robustness check, we re-run our tests separately for crisis (i.e., Asian, Russian and Euro-debt crises) and non-crisis periods. Our results are qualitatively unchanged.

7. Policy implications

Our results provide evidence of trading on leaked information in local stock markets, particularly in countries with lower institutional quality. This raises the question of where the potential information leakage might be coming from. The IOSCO Code of Conduct Document (IOSCO, 2004) provides detailed guidelines as to the process CRAs should use to release their reports (see section 2). In the EU, a 2009 regulation on CRAs (EU, 2009) required that CRAs “*inform the rated entity at least 12 hours before publication of the credit rating...*”; in 2013 the so-called “12-hour rule” was amended to a “24-hour rule”

(Annex I, Section D, Part I). Therefore, in many countries, when a CRA is preparing to announce a downgrade, a number of government officials see the rating report during the consultation process before its public release. As a result, any one of these government officials or individuals from the CRA could leak this information (intentionally or unintentionally) to local market participants, journalists or politicians.

This interpretation is consistent with concerns EU policymakers express about potential leakage of information during the consultation process. For instance, the 2011 Roundtable on CRAs by the European Commission cites opposition to recommending that three days' notice be given for sovereign rating changes, "*mainly because of market abuse risks.*" In addition, EU (2013) required that CRA announcements be scheduled rather than unscheduled events, to occur on three Fridays a year after markets close.

Renewed concerns about the breach of confidentiality during the consultation process were recently expressed by capital market regulators in Europe. On December 2, 2013, the European Securities and Markets Authority (ESMA) published results of a sovereign ratings investigation assessing the governance, conflicts of interest, resourcing adequacy, confidentiality controls and timing of publication of rating actions (ESMA, 2013). With respect to confidentiality, Section 2.2 of the report states that ESMA "*...is concerned that confidential information has been passed on to third parties who should not be privy to it.*" With respect to timeliness, Section 2.3 of the report states that ESMA "*... observed significant and frequent delays between the decision taken by the rating committee and the publication of sovereign ratings. In particular, there were instances of publication of ratings more than five days after the rating decision had been approved by the rating committee and, in at least one case even two weeks after the date of the committee.*"

Thus, while a consultation process is encouraged by IOSCO (2004) and the EU (2013) requires that such a process start at least 24 hours before the official announcement, an upper bound on the consultation window is not specified. As implied by ESMA (2013), a delay over five days is likely to be associated with the destabilizing effects of leakage that we document in this paper, or market abuse as

noted by EU (2011). We therefore offer a few policy recommendations related to revisions of official sovereign rating (and outlook) announcements by CRAs.

The simplest solution might be to avoid the consultation process altogether in the several days before the current scheduled announcement, since markets can evaluate the information value inherent in upcoming CRA announcements. CRAs might still discuss information with rated entities for verification purposes, but such communication could end several weeks before the scheduled announcement date without CRAs having to reveal their intentions with respect to their rating decision (if possible). Should the consultation process immediately before the announcement remain, we propose that an upper bound be placed on the consultation window. At the moment, CRAs in the EU are required to give at least 24-hour notice to government officials before they publicly announce their decision to change a rating or outlook, but they can publish their decision days or even weeks after consulting with local government officials. We argue that the consultation process be constrained such that all communication between the CRA and government officials be completed, say, within 48 hours of the announcement, so that the probability of leakage is decreased through a shorter consultation window. Rating agencies might want to reserve the right to make unscheduled announcements, especially after unexpected events. Current EU legislation allows this, subject to appropriate explanations, but in that case it would probably be best to dispense with any consultation or limit it to 48 hours as suggested above.

Finally, to prevent the destabilizing stock market effects documented in this paper, we propose that the process through which information is shared between CRAs and local government officials, as well as the timing of this process, be defined uniformly worldwide to safeguard the information confidentiality.

8. Conclusion

We find evidence consistent with information leakage taking place during the consultation process between CRAs and government officials of the rated sovereign. Specifically, local stock markets decline before the public announcement of a sovereign rating downgrade, resulting in a significant market reaction prior to the event. We also find a causal link between institutional quality and negative pre-

announcement abnormal returns. Incorporating outlook changes and watchlist inclusions to control for potential anticipation effects does not alter our findings. Using manually collected news searches as well as recently developed news frequency and content variables (Thomson Reuters MarketPsych Indices), we further find that stock markets in low-institutional quality countries experience negative abnormal stock returns in the absence of both news related to the forthcoming downgrade (i.e., rumors) and news not related to the downgrade (that is, unrelated bad news are not driving the results), which is consistent with unobserved leakages driving the results. Evidence of a post-event reversal only in the presence of downgrade rumors provides further support to the view that the negative pre-announcement abnormal returns are an overreaction to information leakage.

Overall, our results are consistent with recent investigations related to the destabilizing effects of official announcements of sovereign ratings in the U.S. and EU, and lend support to recent regulations in the EU that require CRAs to publish their decisions on pre-announced dates. Our results suggest, however, that capital market regulators also pay attention to how information is communicated between CRAs and local governments, particularly the consultation window between the decision to downgrade and the public announcement of the downgrade.

Appendix

Econometrics (Event Study and Standard Error Estimation)

We use a world market model to calculate abnormal returns as follows. For every event, the following time-series regression is estimated using daily data in the window [-270, -21]:

$$R_{it} = \alpha_i + \beta_i R_{Wt} + \varepsilon_{it}, \quad (1)$$

where R_{it} is observation i 's MSCI index return, and R_{Wt} is the world MSCI index return. We then calculate abnormal returns (AR) from the residuals for [-20, +20]:

$$AR_{it} = R_{it} - \hat{\alpha}_i - \hat{\beta}_i R_{Wt}. \quad (2)$$

Finally, we obtain cumulative abnormal returns (CARs) for different sub-periods $[t_1, t_2]$ by adding up the corresponding abnormal returns over the event window:

$$CAR_i[t_1, t_2] = AR_{it_1} + \dots + AR_{it_2}. \quad (3)$$

We use different estimators to test for the statistical significance of average abnormal returns and average CARs (and we do this separately for upgrades and downgrades). We first use the cross-sectional variation of abnormal returns in the event window under the assumption that AR_{it} is independently and identically distributed following a normal distribution with mean zero (under the null) and variance σ^2 . Using s_t as an estimator for σ (N = number of events), we define the test statistic based on the average abnormal return (AAR_t):

$$Z = \sqrt{N} \frac{AAR_t}{s_t} \sim t_{N-1} \quad (4)$$

$$AAR_t = \frac{1}{N} \sum_{i=1}^N AR_{it} \quad (5)$$

$$s_t = \sqrt{\frac{1}{N-1} \sum_{i=1}^N (AR_{it} - AAR_t)^2}. \quad (6)$$

Similarly, for the CARs we define the test statistic

$$Z = \sqrt{N} \frac{CAAR_i[t_1, t_2]}{s} \sim N(0,1), \quad (7)$$

where the cumulative average abnormal return (CAAR) is

$$CAAR[t_1, t_2] = \frac{1}{N} \sum_{i=1}^N CAR_i[t_1, t_2] \quad (8)$$

and the standard deviation is

$$s = \sqrt{\frac{1}{N-1} \sum_{i=1}^N (\text{CAR}_i[t_1, t_2] - \text{CAAR}[t_1, t_2])^2}. \quad (9)$$

This test statistic accounts for event-induced variance as it uses an estimate of the cross-sectional variation of abnormal returns in the event window (testing period).

Boehmer et al. (1991) propose another way to account for event-induced variance based on standardized abnormal returns. Abnormal returns AR_i in the event window are standardized by the time-series standard deviation of AR_{it} in the estimation period $[-270, -21]$. We define

$$\overline{\text{AR}}_1 = \frac{1}{250} \sum_{t=1}^{250} \text{AR}_{it} \quad (10)$$

$$\overline{s}_1 = \sqrt{\frac{1}{249} \sum_{t=1}^{250} (\text{AR}_{it} - \overline{\text{AR}}_1)^2}. \quad (11)$$

The standardized abnormal returns are then defined as

$$\text{SAR}_{it} = \frac{\text{AR}_{it}}{\overline{s}_1}. \quad (12)$$

The Boehmer et al. (1991) t-test is constructed by dividing the average SAR_{it} by their cross-sectional standard deviation:

$$T_{\text{BMP}} = \sqrt{N} \frac{\text{ASAR}_t}{s}, \quad (13)$$

where

$$\text{ASAR}_t = \frac{1}{N} \sum_{i=1}^N \text{SAR}_{it} \quad (14)$$

$$s = \sqrt{\frac{1}{N-1} \sum_{i=1}^N (\text{SAR}_{it} - \text{ASAR}_t)^2}. \quad (15)$$

Kolari and Pynnonen (2010) extend equation (13) to also account for the cross-sectional correlation of abnormal returns. They do this because, in some cases, the correlation among abnormal returns (of different events) cannot be assumed to be zero, hence the independence assumption is violated. To address this concern they propose an adjustment to equation 13, which accounts for cross-correlation of residual returns in the estimation period. Letting \bar{r} being the mean cross-correlation in the estimation period among residual returns, they propose the following test statistic:

$$T_{\text{KP}} = T_{\text{BMP}} \sqrt{\frac{1-\bar{r}}{1+(N-1)\bar{r}}}. \quad (16)$$

As a robustness check, we also use the more traditional method proposed by Brown and Warner (1980). This method estimates the standard deviation of average abnormal returns from the time series of average abnormal returns in the estimation period $[-270, -21]$:

$$\bar{s} = \sqrt{\frac{1}{249} \sum_{t=1}^{250} (AAR_t - \overline{AAR})^2}, \quad (17)$$

where AAR_t is as defined in (5) and

$$\overline{AAR} = \frac{1}{250} \sum_{t=1}^{250} AAR_t. \quad (18)$$

The corresponding estimation of the standard deviation for the CAARs for window $[t_1, t_2]$ is given by:

$$s^* = \sqrt{(t_2 - t_1 + 1)} \bar{s}. \quad (19)$$

We use the Kolari and Pynnonen (2010) specification as defined in (16) as our baseline case. Our results also hold using the standard errors of Brown and Warner (1980) and Boehmer et al. (1991).

References

- Afonso, A., Furceri, D., Gomes, P., 2012. Sovereign credit ratings and financial markets linkages: Application to European data. *Journal of International Money and Finance* 31, 606-638.
- Alesina, A., Devleeschauwer, A., Easterly, W., Kurlat, S., Wacziarg, R., 2003. Fractionalization. *Journal of Economic Growth* 8, 155-194.
- Baum, C.F., Schaffer, M.E., Stillman, S., 2011. IVREG29: Stata module for extended instrumental variables/2SLS and GMM estimation (v9). *Statistical Software Components*.
- Beaver, W.H., Shakespeare, C., Soliman, M.T., 2006. Differential properties in the ratings of certified versus non-certified bond-rating agencies. *Journal of Accounting and Economics* 42, 303-334.
- Bekaert, G., Harvey, C.R., Lundblad, C., 2007. Liquidity and expected returns: Lessons from emerging markets. *Review of Financial Studies* 20, 1783-1831.
- Berwart, E., Guidolin, M., Milidonis, A., 2014. An Empirical Analysis of Changes in the Relative Timeliness of Issuer-Paid vs. Investor-Paid Ratings. Available at SSRN 2439492.
- Bhattacharya, U., 2013. Insider Trading Controversies: A Literature Review. Working Paper.
- Bhattacharya, U. and H. Daouk, 2002. The world price of insider trading. *The Journal of Finance*, 57, 75-108.
- Bhattacharya, U., Daouk, H., Jorgenson, B., Kehr, C.-H., 2000. When an event is not an event: the curious case of an emerging market. *Journal of Financial Economics* 55, 69-101.
- Boehmer, E., Musumeci, J., Poulsen, A.B., 1991. Event-study methodology under conditions of event-induced variance. *Journal of Financial Economics* 30, 253-272.
- Brooks, R., Faff, R.W., Hillier, D., Hillier, J., 2004. The national market impact of sovereign rating changes. *Journal of Banking and Finance* 28, 233-250.
- Brown, S.J., Warner, J.B., 1980. Measuring security price performance. *Journal of Financial Economics* 8, 205-258.
- Brunnermeier, M.K., 2005. Information leakage and market efficiency. *Review of Financial Studies* 18, 417-457.

- CESR, 2004. Press Release: CESR announces a call for evidence on credit rating agencies.
- Cheng, M., Neamtiu, M., 2009. An empirical analysis of changes in credit rating properties: Timeliness, accuracy and volatility. *Journal of Accounting and Economics* 47, 108-130.
- Easterly, W., Levine, R., 2003. Tropics, germs, and crops: how endowments influence economic development. *Journal of Monetary Economics* 50, 3-39.
- ESMA, 2013. Credit Rating Agencies: Sovereign ratings investigation.
- EU, 2009. Regulation (EC) No 1060/2009 of the European Parliament and of the Council. *Official Journal of the European Union*.
- EU, 2011. Regulation (EC) No 513/2011 of the European Parliament and of the Council. *Official Journal of the European Union*.
- EU, 2013. Regulation (EC) No 462/2013 of the European Parliament and of the Council. *Official Journal of the European Union*.
- Gande, A., Parsley, D.C., 2005. News spillovers in the sovereign debt market. *Journal of Financial Economics* 75, 691-734.
- Hill, P., Faff, R., 2010. The market impact of relative agency activity in the sovereign ratings market. *Journal of Business Finance and Accounting* 37, 1309-1347.
- Hirshleifer, D., Subrahmanyam, A., Titman, S., 1994. Security analysis and trading patterns when some investors receive information before others. *The Journal of Finance* 49, 1665-1698
- IOSCO, 2004. Code of Conduct Fundamentals for Credit Rating Agencies.
- IOSCO, 2008. Code of Conduct Fundamentals for Credit Rating Agencies.
- Kaminsky, G., Schmukler, S.L., 2002. Emerging market instability: do sovereign ratings affect country risk and stock returns? *The World Bank Economic Review* 16, 171-195.
- Khwaja, A.I., Mian, A., 2005. Unchecked intermediaries: Price manipulation in an emerging stock market. *Journal of Financial Economics* 78, 203-241.
- Kolari, J.W., Pynnonen, S., 2010. Event study testing with cross-sectional correlation of abnormal returns. *Review of Financial Studies* 23, 3996-4025.

- Kothari, S., Warner, J., 2007. Econometrics of Event Studies. Handbook of Corporate Finance: Empirical Corporate Finance. B. Espen Eckbo. Elsevier/North-Holland.
- Kroft, S., 2012. Congress: Trading stock on inside information? <http://www.cbsnews.com/news/congress-trading-stock-on-inside-information>.
- La Porta, R., F. Lopez-de-Silanes, A. Shleifer, R.W. Vishny, 1998. Law and Finance. Journal of Political Economy 106, 1113-1155.
- Lesmond, D., Ogden, J., Trzcinka, C., 1999. A new estimate of transaction costs. Review of Financial Studies 12, 1113-1141.
- Martell, R., 2005. The effect of sovereign credit rating changes on emerging stock markets. Available at SSRN 686375.
- Milidonis, 2013. Compensation incentives of credit rating agencies and predictability of changes in bond ratings and financial strength ratings. Journal of Banking & Finance 37, 3716-3732.
- S&P's, 2013. Pre-publication notice to issuers.
- Rossi, S., 2012. Italy extends rating agencies probe to Fitch. URL <http://www.reuters.com/article/2012/01/24/us-italy-fitchidUST>.
- SEC, 2003. Testimony concerning rating the rating agencies: The state of transparency and competition.
- SEC, 2008. Summary Report of Issues Identified in the Commission Staff's Examinations of Select Credit Rating Agencies. U.S. Securities and Exchange Commission.
- Staiger, D.O., Stock, J.H., 1997. Instrumental variables regression with weak instruments. Econometrica 65, 557-86.
- Stambaugh, R.F., Yu, J., Yuan, Y., 2012. The short of it: Investor sentiment and anomalies. Journal of Financial Economics 104, 288-302.
- Stock, J., Yogo, M., 2005. Testing for Weak Instruments in Linear IV Regression,. In: Andreas D & Stock J (eds.) Identification and Inference for Econometric Models: Essays in Honor of Thomas Rothenberg. Cambridge University Press, Cambridge.
- Tetlock, P.C., Saar-Tsechansky, M., Macskassy, S., 2008. More Than Words: Quantifying Language to

Measure Firms' Fundamentals. *The Journal of Finance* 63, 1437-1467.

Figures and Tables

Figure 1: Cyprus Stock Index (Raw Returns) around the August 2011 Sovereign Debt Downgrade
Cumulative Raw Returns in the twenty days before and after the sovereign debt rating downgrade of Cyprus by Fitch on August 10th, 2011.

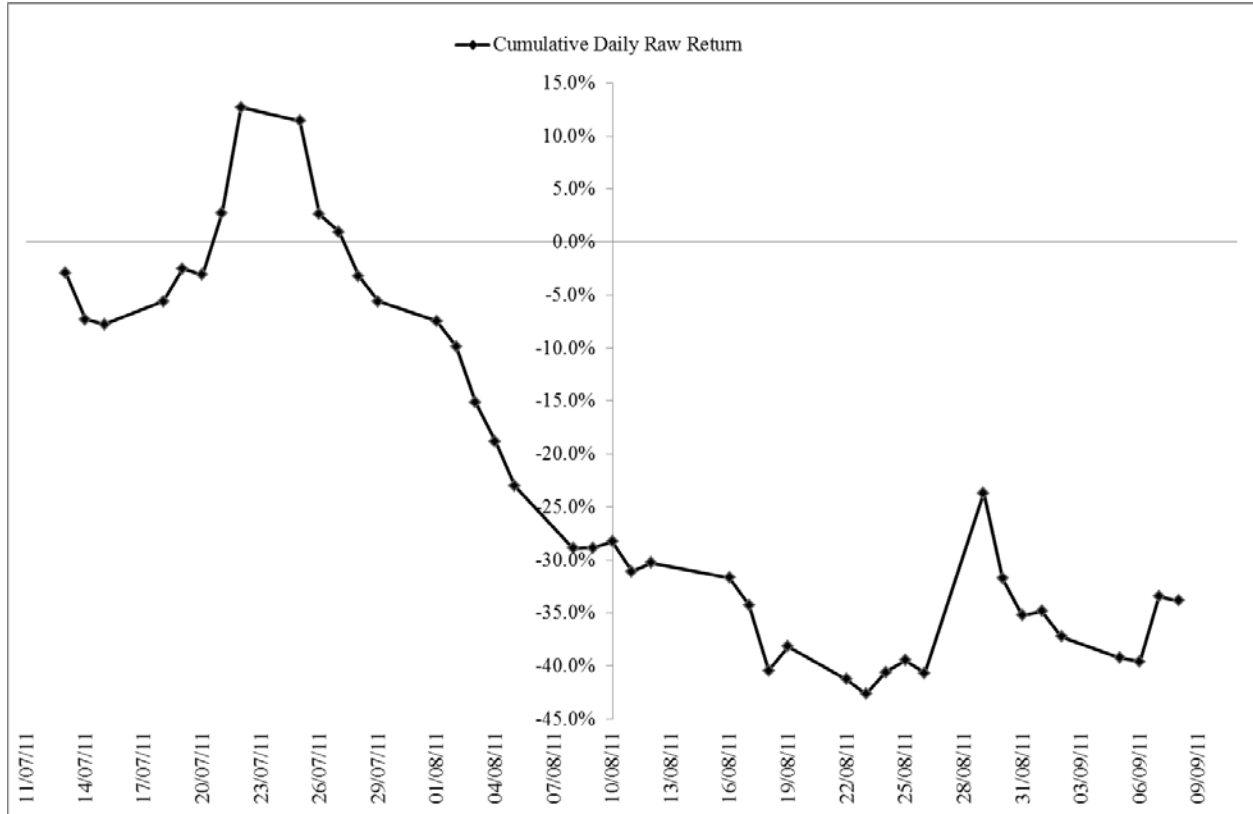


Figure 2: Time Series Distribution of Changes in Sovereign Ratings.

Figure 2A shows all changes in ratings by Fitch, Moody's and S&P, over time. The sample comprises 456 upgrades and 418 downgrades for 65 countries. Figure 2B, shows the changes in ratings that are free from other changes in ratings from the same or another rating agency in the previous twenty days ("First Mover using Ratings" (FMR) sample). These comprise 400 upgrades and 293 downgrades from 65 countries.

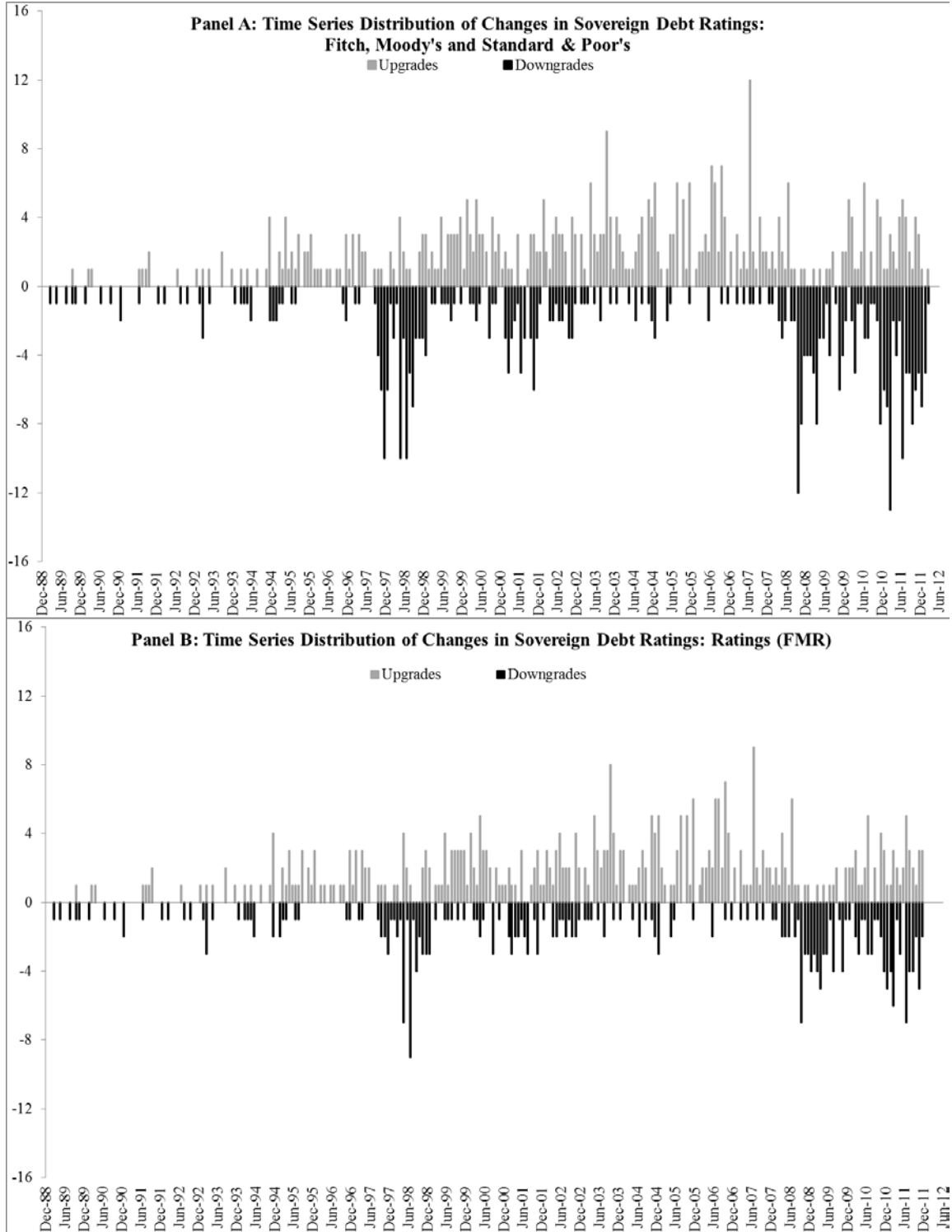


Figure 3: Grade-Level Distribution of Changes in Sovereign Ratings.

A change in rating is defined by either a change in the Local or Foreign Currency Rating. The FMR sample is shown which comprises changes in ratings by all rating agencies (changes in outlooks are excluded), which are not preceded by other changes in ratings by the same or other rating agencies in the previous twenty trading days (FMR stands for First Mover using Ratings). In Figure 3A we plot the 117 upgrades and 86 downgrades by Fitch Ratings; In Figure 3B we plot the 133 upgrades and 70 downgrades by Moody's Ratings; In Figure 3C we plot the 150 upgrades and 137 downgrades by S&P. In Figure 3D we plot the 400 upgrades and 293 downgrades for the FMR sample. The horizontal axis shows the categories of ratings after the rating change is completed (higher numbers indicate lower debt quality).

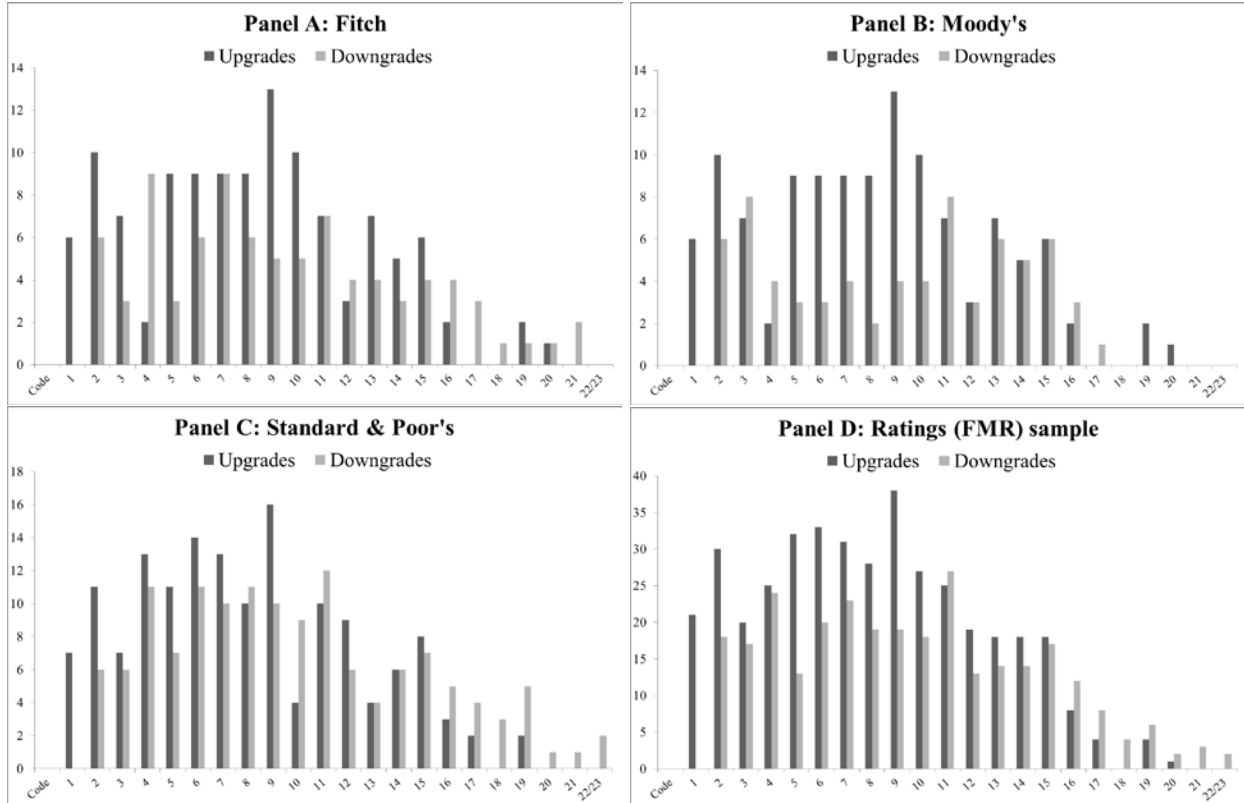


Figure 4: Cumulative Abnormal Returns for Changes in Sovereign Ratings.

The graph shows market-adjusted cumulative average abnormal returns (CAARs) for the “ratings FMR” sample: 397 upgrades and 291 downgrades. Changes in ratings are free from noise from other rating changes, as all rating changes in the preceding twenty days from the same or other rating agencies are removed (“Ratings FMR” sample).

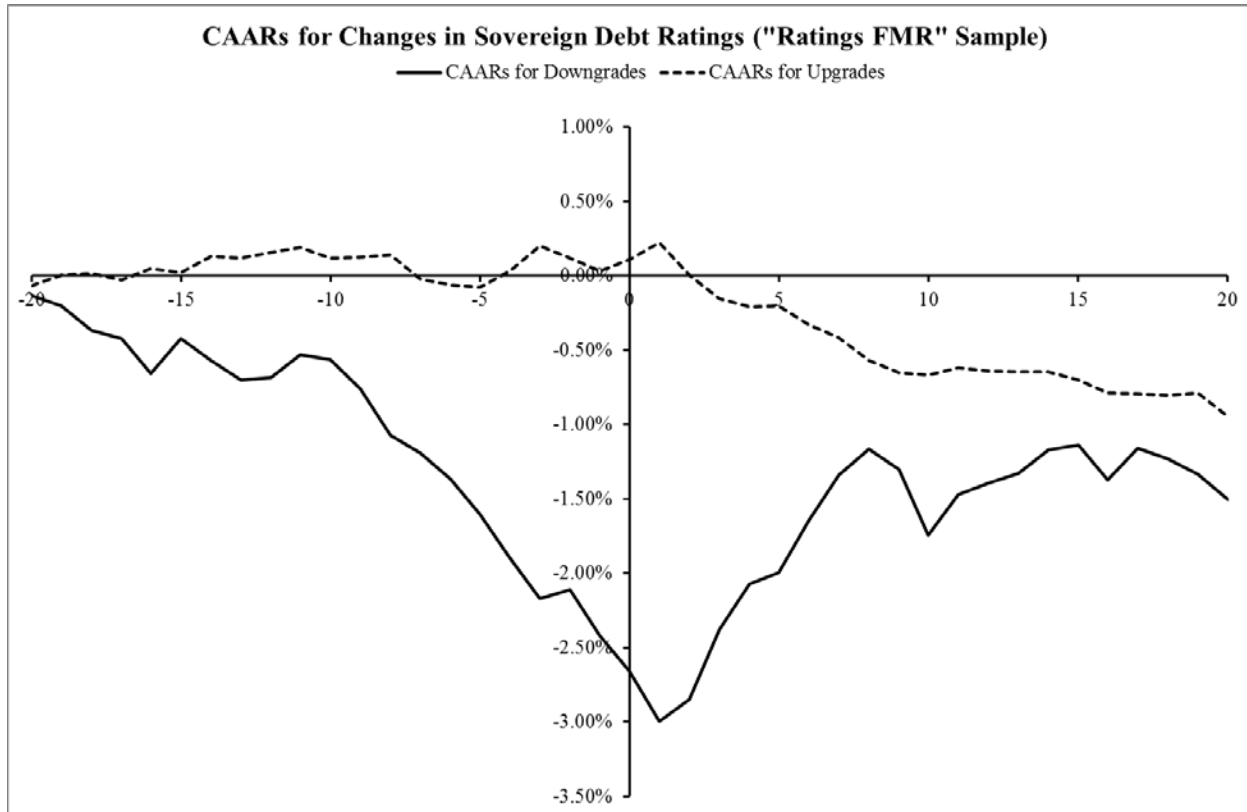


Figure 5: Cumulative Abnormal Returns for Changes in Sovereign Ratings: Robustness.

This figure presents robustness tests of Cumulative Average Abnormal Returns (CAARs) of the baseline case of “Ratings FMR” sample. FMR means that all events preceded by changes in ratings by the same or other rating agency (Fitch, Moody's and S&P) in the previous twenty trading days are deleted. Panel 5A shows CAARs for the FMRO sample (667 upgrades and 483 downgrades). FMRO is a first mover filter using ratings and outlooks in the previous twenty days. Panel 5B shows the “Ratings-only FMRO” sample (378 upgrades and 255 downgrades), which is the union of ratings filtered using the ratings and outlooks filter (FMRO). Panel 5C shows CAARs for the union of ratings but without the “First Mover” filter (453 upgrades and 415 downgrades). Panel 5D shows the same sample as 5A, but excluding the recent financial crisis (315 upgrades and 161 downgrades).

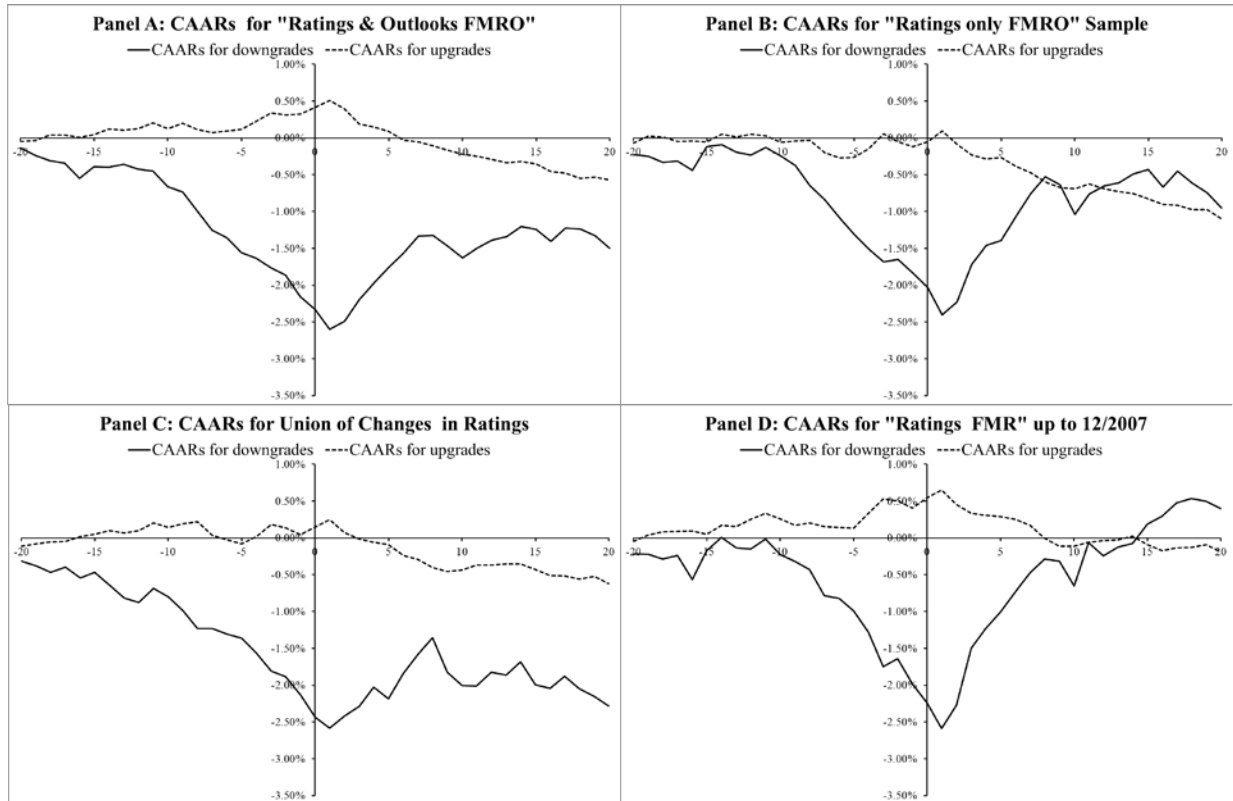


Figure 6: Cumulative Abnormal Returns (Downgrades) by Institutional Quality.

The graph shows the cumulative average abnormal returns (CAARs) for downgrades in sovereign ratings, according to the Transparency International (TI) Index (“Ratings FMR” sample). There are a total of 149 with low TI (high corruption) and 142 events with high TI (low corruption) score. The separation of each category is made at the median value of the “Ratings FMR” sample.

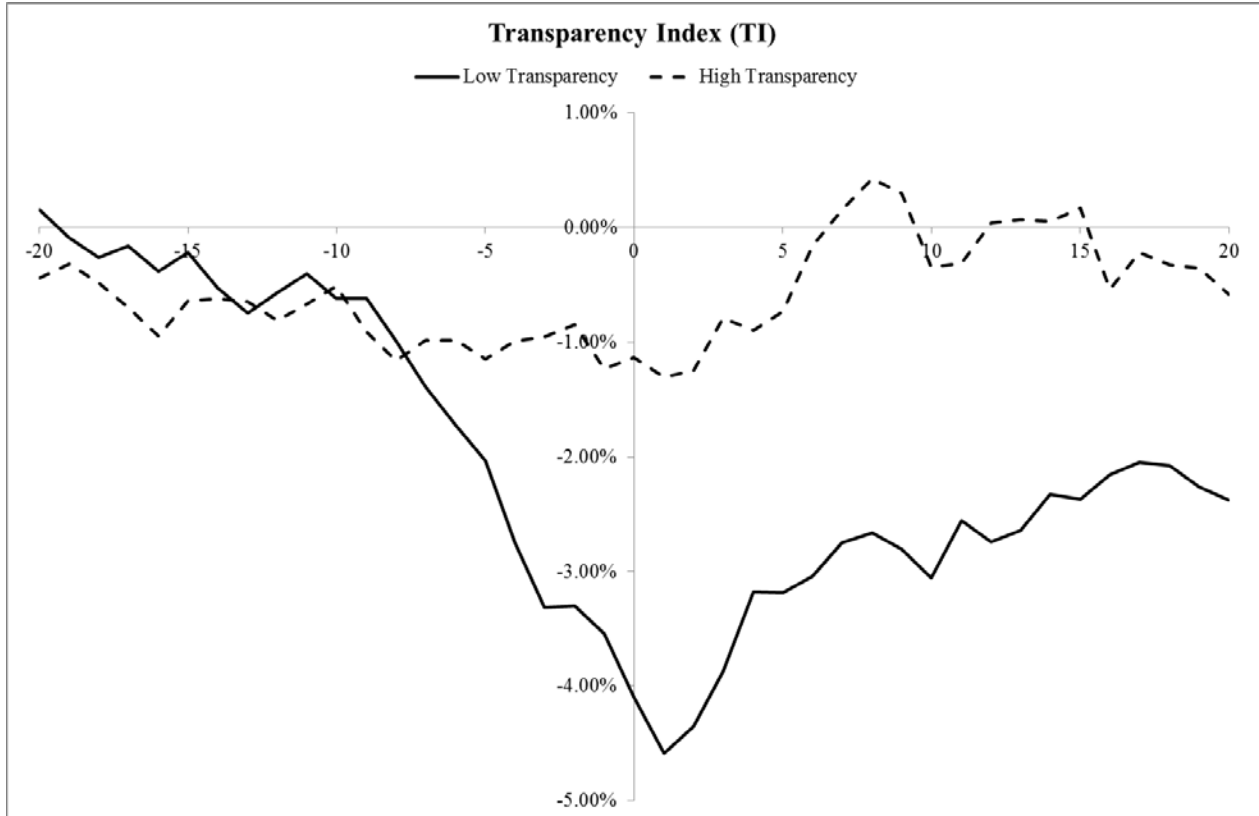


Figure 7: Cumulative Abnormal Returns (Downgrades) by Turnover.

The graph shows the cumulative average abnormal returns (CAARs) for sovereign rating downgrades, according to the level of Liquidity (“Ratings FMR” sample). We proxy for liquidity by estimating daily turnover in the estimation and testing periods, and then taking its time-series average around each event. Turnover is the ratio of total market volume traded divided by market capitalization. High liquidity comprises downgrades with above median liquidity levels (n=169). Low liquidity comprises downgrades with below median liquidity levels (n=122).

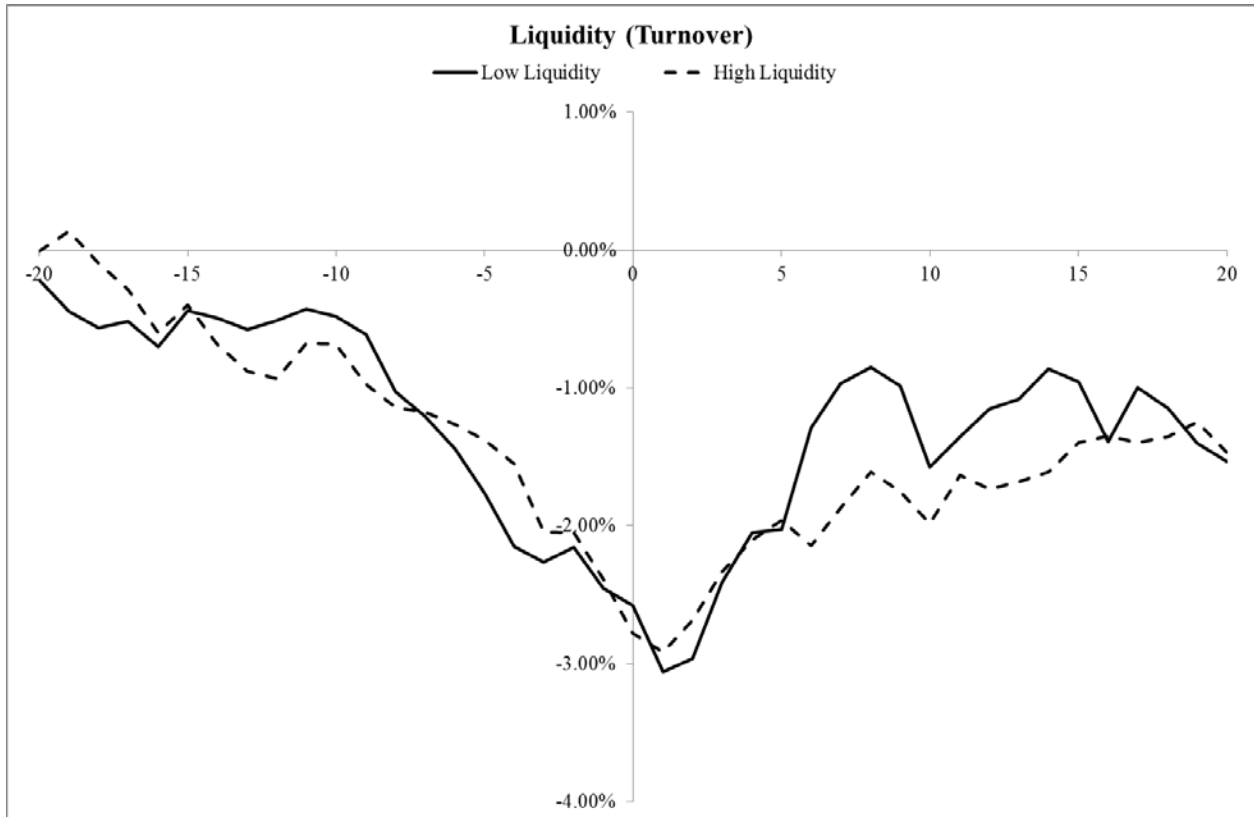


Figure 8: Cumulative Abnormal Returns (Low TI Downgrades) Conditional on Rumors.

The graph shows the cumulative average abnormal returns (CAARs) for downgrades in sovereign ratings, for Low Institutional Quality, by the amount of Sovereign Downgrade News (SDN). We proxy institutional quality using the Transparency International (TI) Index. SDN is assigned the value of 1 when there is at least one news item relevant to the downgrade before the announcement and 0 otherwise. CAARs for the “Ratings FMR” sample (low TI downgrades) are shown separately for SDN=0 (n=92) and SDN=1 (n=57).

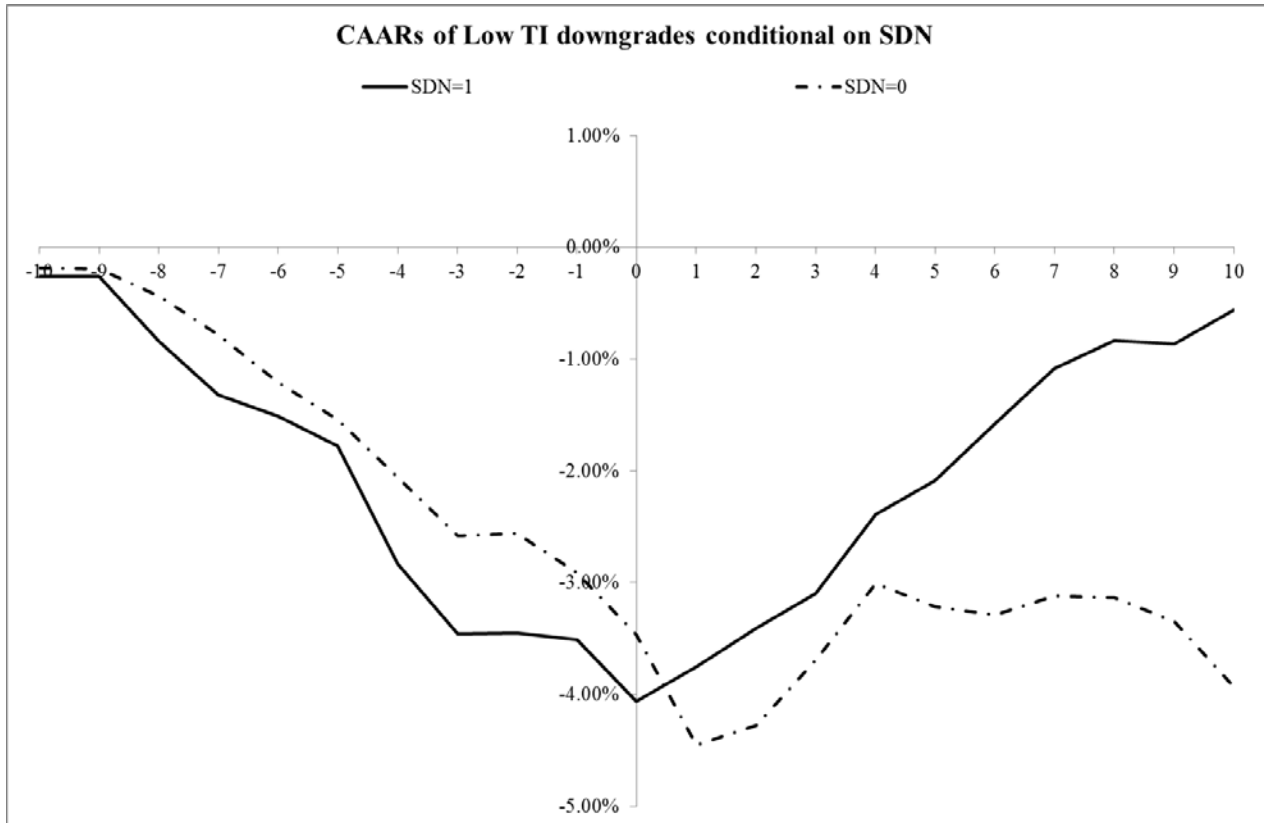


Table 1**Event Study of Changes in Sovereign Ratings on Local Stock Market Indices**

This table presents event-study results of how sovereign debt rating changes affect the respective sovereign daily, stock market return. Results are reported separately for upgrades (n=397) and downgrades (n=291). The sample comprises the union of changes in ratings, from Fitch, Moody's and S&P's, filtered using FMR. FMR means that all events preceded by changes in ratings by the same or other rating agencies in the previous twenty trading days are deleted ("Ratings FMR" sample). Panel A shows daily average abnormal returns on day t, AAR(t). Panel B shows the cumulative average abnormal return, CAAR[t₁,t₂], starting on t₁ and ending at t₂ relative to event day (day 0). P-values are based on Kolari and Pynnönen (2010). ***, **, and * denote statistical significance (SS) at the 1, 5, and 10 percent level.

Panel A: Average Abnormal Returns (AARs)						
Relative Day	Upgrades			Downgrades		
	AAR (%)	P-value	SS	AAR (%)	P-value	SS
-10	-0.070	0.328		-0.033	0.808	
-9	0.005	0.694		-0.197	0.189	
-8	0.018	0.637		-0.310	0.143	
-7	-0.165	0.211		-0.123	0.179	
-6	-0.039	0.549		-0.172	0.096	*
-5	-0.016	0.267		-0.236	0.039	**
-4	0.106	0.239		-0.294	0.016	**
-3	0.172	0.116		-0.275	0.077	*
-2	-0.085	0.170		0.062	0.199	
-1	-0.087	0.238		-0.313	0.016	**
0	0.079	0.173		-0.236	0.035	**
1	0.112	0.097	*	-0.338	0.019	**
2	-0.217	0.032	**	0.150	0.491	
3	-0.157	0.194		0.469	0.159	
4	-0.055	0.525		0.306	0.041	**
5	0.002	0.786		0.074	0.768	
6	-0.121	0.044	**	0.352	0.014	**
7	-0.090	0.261		0.305	0.081	*
8	-0.150	0.119		0.177	0.206	
9	-0.083	0.719		-0.138	0.144	
10	-0.015	0.807		-0.441	0.168	
Panel B: Cumulative Average Abnormal Returns (CAARs)						
Event Window	Upgrades			Downgrades		
	CAAR (%)	P-value	SS	CAAR (%)	P-value	SS
(-10,-3)	0.011	0.471		-1.641	0.000	***
(-5,-3)	0.262	0.024	**	-0.806	0.001	***
(0,+1)	0.191	0.030	**	-0.574	0.002	***
(+2,+5)	-0.427	0.026	**	1.000	0.046	**
(+2,+10)	-0.886	0.003	***	1.254	0.402	
(-5,+5)	-0.145	0.992		-0.631	0.028	**
(-10,+10)	-0.856	0.207		-1.212	0.014	**

Table 2
Cumulative Abnormal Returns (Downgrades) by Institutional Quality

In the first column we present the impact of sovereign debt downgrade announcements on the respective local stock market index, using the "Ratings FMR" sample, conditional on institutional quality. FMR means that all events preceded by changes in ratings by the same or other rating agency in the previous twenty trading days are deleted. $CAAR[t_1, t_2]$ is the cumulative average abnormal return (in %) for the period starting on t_1 and ending at t_2 relative to event day (day 0). We use the Transparency International (TI) Index to proxy for institutional quality. We present CAARs separately for downgrades with high TI and low TI (Low TI implies low institutional quality). The separation of each category is made at the median value of the "Ratings FMR" sample. N is the number of observations in each subcategory. P-values are based on the Kolari and Pynnönen (2010) approach. ***, **, and * denote statistical significance at the 1, 5, and 10 percent level, respectively. In the second column, we run ordinary least squares (OLS) regressions of CARs (cumulative abnormal returns) on the TI Index, winsorized at the 1%. The intercept of the OLS regression is not shown. Each regression has 291 observations. "P-value" is based on robust Huber-White standard errors with statistical significance (SS) as described above.

Event Window	CAARs conditional on Transparency Index (TI)						OLS Regression of CARs on Transparency Index (TI)		
	(1) Low TI (n=149)			(2) High TI (n=142)			(3) Transparency Index (TI)		
	CAAR (%)	P-Val	SS	CAAR (%)	P-Val	SS	Coeff.	P-Value	SS
(-10,-3)	-2.915	0.000	***	-0.286	0.522		0.004	0.023	**
(-5,-3)	-1.589	0.000	***	0.028	0.894		0.003	0.020	**
(0,+1)	-1.047	0.001	***	-0.070	0.202		0.002	0.057	*
(+2,+5)	1.404	0.010	***	0.569	0.767		-0.002	0.068	*
(+2,+10)	1.536	0.103		0.954	0.931		0.000	0.842	
(-5,+5)	-1.458	0.018	**	0.250	0.427		0.002	0.417	
(-10,+10)	-2.652	0.004	***	0.321	0.392		0.006	0.064	*

Table 3

Two-Stage Least Square Regressions of Cumulative Abnormal Returns on Institutional Quality

Panel A shows the selection process for instrumental variables (IVs) to be used for the endogenous regressor approximating institutional quality (Transparency International Index). The dependent variable is CAR [-5, -3] winsorized at the 1% level (results are similar using CAR [-10, -3], hence not shown). The four IVs tested are: Common vs. Civil Law (La Porta et al., 1998); Ethnicity fractionalization (Alesina et al., 2003); Religion fractionalization (Alesina et al., 2003); a landlocked indicator (1 if landlocked; 0 otherwise). The Null Hypothesis tested is "Instruments are redundant". We report robust test statistics estimated using Baum et al. (2011), which are distributed according to a chi-squared distribution with degrees of freedom equal to the product of the number of endogenous regressors (1) and the numbers of IVs tested (the total number of observations is 291). The procedure begins with the four IVs listed below (Round 1), and is repeated successively until all redundant IVs are eliminated. The final list of IVs is determined in Round 2. In Panel B we show the two-stage least squares (TSLs) regression (2nd step) on the cumulative abnormal returns (CARs) in the local stock market index, in the period before (using CAR [-10, -3] and CAR [-5, -3] winsorized at the 1%) sovereign debt downgrades ("Ratings FMR" sample). IVs used for "TI" are Common/Civil Law, Ethnic fractionalization and Religion fractionalization. "Coeff." is the regression coefficient. "Z" and "P-val" are the robust z-value and p-value of the coefficient. The regression constant is not shown. UID is the under-identification test, which reports the Kleibergen-Paap rk LM statistic and associated chi-square p-value. OID is the over-identification test, which reports the Hansen J Statistic and associated chi-square p-value. WID is the weak-identification test reports both the Cragg-Donald Wald F-statistic and also the Kleibergen-Paap rk Wald F statistic. In the last two rows we report the Stock-Yogo weak ID test critical values (10% maximal) for IV relative bias (Rel. Bias) and Size, respectively. ***, **, and * denote statistical significance (SS) at the 1, 5, and 10 percent level respectively.

Panel A: Instrument Selection for Transparency Index						
Instruments	Round 1			Round 2		
	Test Stat	P-Value	SS	Test Stat	P-Value	SS
Common/Civil Law	17.992	0.000	***	21.844	0.000	***
Ethnicity	63.342	0.000	***	63.822	0.000	***
Religion	12.294	0.001	***	11.624	0.001	***
Landlocked	6.100	0.014	**			

Panel B: TSLs Regression of Pre-Event Stock Market Reaction on Institutional Quality								
	CAR[-10, -3]				CAR[-5, -3]			
	Coeff.	Z	P-val	SS	Coeff.	Z	P-val	SS
Transparency Index (TI)	0.007	2.450	0.014	**	0.006	3.540	0.000	***
Test Statistics		Stat	P-val	SS		Stat	P-val	SS
UID (Kleibergen-Paap rk LM)		66.620	0.000	***		66.620	0.000	***
OID (Hansen J)		1.173	0.556			1.872	0.392	
WID (Kleibergen-Paap rk Wald F)		61.139				61.139		
WID (Cragg-Donald Wald F)		40.094				40.094		
Stock-Yogo WID 10% Rel. Bias		9.080				9.080		
Stock-Yogo WID 10% Size		22.300				22.300		

Table 4
Abnormal Returns (Low TI Downgrades)
Conditional on Sovereign Downgrade News (SDN) - Rumors

This table presents daily abnormal index returns around the announcement of sovereign debt rating downgrades (low TI “Ratings FMR” sample) conditional on SDN. The SDN variable (Sovereign Downgrade News) is manually collected and takes the value of 1 if in the 10 trading days before the downgrade announcement, there is at least one news item (rumor) referring directly to the forthcoming downgrade, and 0 otherwise. Panel A shows daily average abnormal return $AAR(t)$ for all events on each day t , using a world market model. Panel B shows the cumulative average abnormal returns (CAAR) for the event windows specified. Results are shown separately for SDN=0 ($n=92$) and SDN=1 ($n=57$). “Ratings FMR” sample results from the union of changes in ratings, from Fitch, Moody’s and Standard & Poor’s, filtered using FMR. FMR means that all events preceded by changes in ratings by the same or other rating agency in the previous twenty trading days are deleted. Relative Day is the trading day relative to the day 0. P-values are based on the Kolari and Pynnonen (2010) approach. ***, **, and * denote statistical significance at the 1, 5, and 10 percent level, respectively.

Panel A: Average Abnormal Returns (AARs)						
Relative Day	SDN=0 (No Rumors)			SDN=1 (Rumors)		
	AAR (%)	P-value	SS	AAR (%)	P-value	SS
-10	-0.188	0.619		-0.260	0.352	
-9	-0.003	0.861		0.005	0.656	
-8	-0.242	0.597		-0.583	0.202	
-7	-0.351	0.076	*	-0.486	0.026	**
-6	-0.426	0.024	**	-0.189	0.351	
-5	-0.331	0.102		-0.262	0.197	
-4	-0.514	0.009	***	-1.055	0.002	***
-3	-0.525	0.085	*	-0.629	0.093	*
-2	0.023	0.549		0.010	0.407	
-1	-0.356	0.059	*	-0.062	0.968	
0	-0.551	0.047	**	-0.549	0.076	*
1	-0.989	0.000	***	0.304	0.568	
2	0.177	0.736		0.347	0.304	
3	0.579	0.192		0.308	0.674	
4	0.685	0.020	**	0.710	0.013	**
5	-0.201	0.210		0.307	0.385	
6	-0.080	0.717		0.508	0.019	**
7	0.170	0.325		0.494	0.469	
8	-0.013	0.861		0.251	0.316	
9	-0.213	0.132		-0.031	0.818	
10	-0.584	0.004	***	0.297	0.393	
Panel B: Cumulative Average Abnormal Returns (CAARs)						
Event Window	SDN=0 (No Rumors)			SDN=1 (Rumors)		
	CAAR %	P-value	SS	CAAR %	P-value	SS
(-10,-3)	-2.581	0.002	***	-3.459	0.000	***
(-5,-3)	-1.370	0.003	***	-1.946	0.001	***
(0,+1)	-1.539	0.000	***	-0.244	0.549	
(+2,+5)	1.240	0.151		1.672	0.010	***
(+2,+10)	0.521	0.897		3.193	0.002	***
(-5,+5)	-2.002	0.009	***	-0.571	0.603	
(-10,+10)	-3.932	0.001	***	-0.563	0.669	

Table 5

Abnormal Returns, Buzz and Sentiment (Low TI Downgrades) conditional on Rumors

This table presents event studies of sovereign debt rating downgrades on three daily variables: stock returns, TRMI Buzz (log) and TRMI Sentiment. TRMI stands for Thomson Reuters MarketPsych Indices. Buzz measures the frequency of news related to the country of interest. Sentiment is a multi-dimensional, normalized index capturing macro-related, political and other news that affect Sentiment. The SDN variable (Sovereign Downgrade News) is manually collected and takes the value of 1 if in the 10 trading days before the downgrade announcement, there is at least one news item (rumor) referring directly to the forthcoming downgrade, and 0 otherwise. Results are shown for low TI (Transparency Index) events split in subsamples with SDN=0 and SDN=1. The sample comprises the union of downgrades, from Fitch, Moody's and Standard & Poor's, filtered by first mover filter using "Ratings FMR" that also have matching TRMI data and stock return data. FMR means that all events preceded by changes in ratings by the same or other rating agency in the previous twenty trading days are deleted. Relative Day is the trading day relative to the event day (day 0). Panel A shows the average abnormal return for all events on each day t , $AAR(t)$. There are 48 (38) events with stock returns and with SDN=0 (SDN=1). AAI is the average abnormal index for TRMI variables (Buzz and Sentiment). There are 46 (36) events with AAI and SDN=0 (SDN=1). Panel B shows the cumulative average abnormal returns, $CAAR$ and the cumulative average abnormal index for the TRMI variables, $CAAI$. P-values are based on the Kolari and Pynnonen (2010) approach. ***, **, and * denote statistical significance (SS) at the 1, 5, and 10 percent level respectively.

Panel A: Average Abnormal Returns (AAR) and Average Abnormal TRMIs (AAI)																		
Relative Day	SDN = 0 (No Rumors)									SDN = 1 (Rumors)								
	Stock Returns			TRMI Buzz			TRMI Sentiment			Stock Returns			TRMI Buzz			TRMI Sentiment		
	AAR %	P-value	SS	AAI	P-value	SS	AAI	P-value	SS	AAR %	P-value	SS	AAI	P-value	SS	AAI	P-value	SS
-10	-0.214	0.877		-0.008	0.842		0.007	0.482		-0.578	0.144		0.070	0.456		0.019	0.427	
-9	-0.113	0.744		0.014	0.932		-0.006	0.446		-0.170	0.309		0.061	0.728		-0.005	0.801	
-8	-0.678	0.024	**	-0.019	0.743		-0.007	0.624		-0.995	0.119		0.005	0.929		-0.011	0.522	
-7	-0.482	0.018	**	0.050	0.459		-0.004	0.873		-0.024	0.717		0.139	0.120		-0.008	0.524	
-6	-0.436	0.012	**	0.035	0.759		0.005	0.971		-0.377	0.202		0.051	0.612		-0.016	0.255	
-5	-0.341	0.181		0.030	0.622		-0.006	0.478		-0.143	0.353		0.244	0.130		-0.013	0.268	
-4	-0.656	0.003	***	0.107	0.295		-0.005	0.528		-1.528	0.001	***	0.186	0.489		-0.033	0.005	***
-3	-0.438	0.490		0.135	0.184		0.008	0.553		-1.016	0.049	**	0.309	0.056	*	-0.020	0.129	
-2	0.135	0.430		0.179	0.201		-0.016	0.103		-0.204	0.863		0.499	0.002	***	-0.027	0.116	
-1	-0.326	0.326		0.022	0.966		-0.009	0.193		-0.475	0.218		0.711	0.000	***	-0.033	0.065	*
0	-0.514	0.057	*	0.313	0.026	**	-0.033	0.003	***	-0.651	0.090	*	0.866	0.000	***	-0.066	0.000	***
1	-1.161	0.005	***	0.300	0.038	**	-0.041	0.000	***	0.489	0.536		0.925	0.000	***	-0.073	0.000	***
2	0.355	0.684		0.203	0.090	*	-0.032	0.007	***	0.283	0.787		0.631	0.000	***	-0.028	0.030	**
3	1.033	0.077	*	0.153	0.460		-0.037	0.000	***	0.397	0.634		0.539	0.001	***	-0.018	0.360	
4	1.091	0.015	**	0.038	0.748		-0.012	0.205		1.062	0.011	**	0.533	0.001	***	0.006	0.658	
5	-0.155	0.236		0.140	0.236		-0.012	0.379		0.442	0.349		0.407	0.016	**	0.001	0.860	
6	0.175	0.789		0.169	0.197		-0.017	0.112		0.586	0.009	***	0.455	0.008	***	0.005	0.588	
7	0.557	0.053	*	0.075	0.654		-0.015	0.149		0.702	0.375		0.373	0.025	**	-0.010	0.980	
8	0.120	0.573		-0.015	0.950		-0.014	0.673		0.385	0.176		0.384	0.011	**	-0.001	0.922	
9	0.000	0.020	**	-0.040	0.641		-0.018	0.426		-0.014	0.962		0.305	0.056	*	-0.013	0.322	
10	-0.813	0.015	**	-0.025	0.969		-0.024	0.161		0.582	0.203		0.293	0.094	*	-0.010	0.678	

Panel B: Cumulative Average Abnormal Returns (CAAR) and Cumulative Average Abnormal TRMIs (CAAI)

Event Window	SDN = 0 (No Rumors)									SDN = 1 (Rumors)								
	Stock Returns			TRMI Buzz			TRMI Sentiment			Stock Returns			TRMI Buzz			TRMI Sentiment		
	CAAR %	P-value	SS	CAAI	P-value	SS	CAAI	P-value	SS	CAAR %	P-value	SS	CAAI	P-value	SS	CAAI	P-value	SS
(-10,-3)	-3.357	0.001 ***		0.343	0.315		-0.007	0.798		-4.831	0.000 ***		1.066	0.270		-0.085	0.105	
(-5,-3)	-1.435	0.031 **		0.272	0.139		-0.002	0.844		-2.687	0.001 ***		0.740	0.237		-0.065	0.007 ***	
(-5,-2)	-1.300	0.147		0.451	0.125		-0.019	0.454		-2.891	0.003 ***		1.239	0.104		-0.092	0.008 ***	
(-5,-1)	-1.626	0.113		0.473	0.253		-0.028	0.366		-3.366	0.001 ***		1.950	0.028 **		-0.125	0.004 ***	
(0,+1)	-1.675	0.001 ***		0.613	0.005 ***		-0.074	0.001 ***		-0.162	0.629		1.791	0.000 ***		-0.138	0.000 ***	
(+2,+5)	2.324	0.102		0.534	0.100 *		-0.093	0.029 **		2.185	0.018 **		2.110	0.011 **		-0.040	0.286	
(+2,+10)	1.685	0.624		0.699	0.260		-0.182	0.035 **		4.426	0.002 ***		3.921	0.019 **		-0.070	0.350	
(-5,+5)	-0.978	0.118		1.620	0.059 *		-0.195	0.011 **		-1.344	0.111		5.851	0.005 ***		-0.304	0.000 ***	
(-10,+10)	-3.538	0.007 ***		1.857	0.161		-0.289	0.026 **		-1.246	0.247		7.988	0.010 **		-0.354	0.001 ***	