

A phase-field chemo-mechanical model for corrosion-induced cracking in reinforced concrete

Evžen Korec^a, Milan Jirásek^b, Hong S. Wong^a, Emilio Martínez-Pañeda^{a,*}

^a Department of Civil and Environmental Engineering, Imperial College London, London SW7 2AZ, UK

^b Department of Mechanics, Faculty of Civil Engineering, Czech Technical University in Prague, Thákurova 7, Prague-6, 166 29, Czech Republic

ARTICLE INFO

Keywords:

Reinforced concrete
Corrosion-induced cracking
Phase-field fracture
PF-CZM (phase-field cohesive zone model)
Reactive transport in porous media
Precipitation eigenstrain

ABSTRACT

We present a new mechanistic framework for corrosion-induced cracking in reinforced concrete that resolves the underlying chemo-mechanical processes. The framework combines, for the first time, (i) a model for reactive transport and precipitation of dissolved Fe^{2+} and Fe^{3+} ions in the concrete pore space, (ii) a precipitation eigenstrain model for the pressure caused by the accumulation of precipitates (rusts) under pore confinement conditions, (iii) a phase-field model calibrated for the quasi-brittle fracture behaviour of concrete, and (iv) a damage-dependent diffusivity tensor. Finite element model predictions show good agreement with experimental data from impressed current tests under natural-like corrosion current densities.

1. Introduction

This study is concerned with the modelling of crack nucleation and growth in reinforced concrete resulting from the electrochemical corrosion of embedded steel reinforcement. Corrosion of steel in concrete is responsible for the premature deterioration of 70%–90% of concrete structures [1,2] and thus induces considerable repair costs [3]. Especially in industrialised countries, these are becoming pressing issues as most of the reinforced concrete bridges have been built in the 1960s and are coming to the end of their predicted service life. Only in the Netherlands, the number of bridges in the need of repair is estimated to rise by a factor of 2–4 in the next 20 years and by a factor of 3–6 in the next 40 years [4]. Since direct replacement of all degraded reinforced-concrete infrastructure in a short period is unfeasible, advances in long-term corrosion durability predictions are needed to accurately assess the remaining service life. Many models have been proposed to estimate corrosion-induced cracking, the majority of which are of empirical nature (see Ref. [5] for a review). Phenomenological models generally require extensive calibration and have a regime of applicability that is typically limited to scenarios resembling the calibration schemes; predictive modelling requires explicitly resolving the physical processes at play.

Recent years have seen promising progress in the development of mechanistic models for corrosion-induced cracking of reinforced concrete. The aim is to model the physical phenomena underlying the formation of a rust layer and how this rust layer triggers cracking. However, these phenomena are complex and hence have only been accounted for to a certain extent. For example, mechanical models

have been presented that provide a mechanistic description of the fracture process but assume a given (often non-uniform) rust layer [6–10]. Instead of simulating changes in the corrosion current density or the transport of involved chemical species, corrosion-induced fracture predictions are obtained based on a prescribed non-uniform rust distribution described by Gaussian [6], Von Mises [7,8] or semi-elliptical [9] functions. Within prescribed rust layer approach, even mesoscale fracture of concrete both in 2D [10] and 3D [11] has been simulated. Other models go one step further and estimate the rust layer thickness from a given corrosion current density. Molina et al. [12] and Grassl and co-workers [13–15] studied corrosion-induced cracking caused by uniform corrosion. Fahy et al. [13] considered the pressure-driven transport of corrosion products, simplified to be an incompressible fluid, into cracked porous concrete. Tran et al. [16] investigated the case of non-uniform corrosion and allowed for the accommodation of corrosion products in cracks, which results in a reduction of the corrosion-induced pressure. The impact of the mechanical properties of rust Tang et al. [17], steel–concrete interface [18] and stirrups [19] have also been considered. A third class of mechanistic models are those that predict the thickness of the rust layer, often considering the chemo-mechanical nature of the problem. Wei et al. [20] assumed uniform corrosion and related the expansion of the rust layer to the flux of dissolved oxygen. Nossoni and Harichandran [21] predicted the corrosion current density from the oxygen concentration, assuming it to be the limiting factor, and considered a detailed structure of a rust layer composed of ferrous and ferric rusts. More comprehensive

* Corresponding author.

E-mail address: e.martinez-paneda@imperial.ac.uk (E. Martínez-Pañeda).

approaches have also been employed, whereby the transport of water and certain chemical species such as oxygen or chlorides is solved for, the corrosion current density is calculated from the distribution of electrochemical potential, and the rust layer thickness is then related to the predicted corrosion current density [22–35]. Ožbolt, Balabanić and co-workers [22–29] employed contact finite elements on the boundary of the rebars to simulate the corrosion-induced inelastic strain. Also, their model simulated the transport of corrosion products into porosity and cracks as a convective diffusion problem. Michel, Geiker and co-workers [30–34] simulated the corrosion-induced pressure of the rust layer with a thermal analogy and considered a corrosion accommodation region (CAR), where corrosion products can accumulate stress-free until the CAR is filled. Other examples of this group of models are those by Bažant [36,37] and Chen et al. [38,39].

These mechanistic models have paved the way to a better understanding of corrosion-induced cracking in reinforced concrete but the predictive abilities of existing models are still limited [40,41], as also highlighted in the critical review by Jamali et al. [5]. It has been argued that key chemo-mechanical phenomena must be included into the modelling to improve predictive capabilities [40–42]. In particular, the aforementioned models do not explicitly simulate: (i) the reactive transport of iron species in the pore space of concrete, (ii) the subsequent precipitation of iron species into rusts that blocks the pore space, and (iii) the precipitation-induced pressure caused by the accumulation of rust under confined conditions. The reactive transport of dissolved iron species and their precipitation to rusts was modelled by Stefanoni et al. [43], Furcas et al. [44] and Zhang and Angst [45], but the corrosion-induced pressure and subsequent fracture have not yet been investigated within this framework.

In this work, a mechanistic chemo-mechanical model for corrosion-induced cracking in reinforced concrete is presented to fill this important gap. That is, unlike previous corrosion-induced cracking models, the growth of precipitates from the steel surface is not implicitly assumed but explicitly resolved by a simplified model of reactive transport and precipitation of dissolved iron species in the concrete pore space. Moreover, an eigenstrain model is adopted to capture the pressure buildup resulting from the accumulation of precipitates and this is coupled with a phase-field description of quasi-brittle fracture that incorporates the role of cracks in enhancing the transport of iron ions. The theoretical chemo-mechanical framework is implemented using the finite element method and the predictive capabilities of the coupled numerical model are demonstrated by simulating corrosion-induced cracking under mildly accelerated conditions.

2. Theory and computational framework

We shall begin the formulation of our theory by describing the key chemo-mechanical mechanisms underlying corrosion-induced cracking, including a discussion on existing approaches for capturing such phenomena and on how these phenomena are incorporated into our model (Section 2.1). Then, in Section 2.2, the reactive transport model for dissolved Fe^{2+} and Fe^{3+} ions is presented. This is followed by a description of the precipitation eigenstrain model (Section 2.3). Section 2.4 presents the coupled phase-field fracture formulation, including the definition of the damage-dependent diffusivity tensor. And this part of the manuscript concludes with an overview of the governing equations of the theory and a brief description of the numerical implementation (Section 2.5).

Notation. Scalar quantities are denoted by light-faced italic letters, e.g. ϕ , Cartesian vectors by upright bold letters, e.g. \mathbf{u} , and Cartesian second- and higher-order tensors by bold italic letters, e.g. $\boldsymbol{\sigma}$. The symbol $\mathbf{1}$ represents the second-order identity tensor while \mathbf{I} corresponds to the fourth-order identity tensor. Inner products are denoted by a number of vertically stacked dots, where the number of dots corresponds to the number of indices over which summation takes place, such that $\boldsymbol{\sigma} : \boldsymbol{\varepsilon} = \sigma_{ij} \varepsilon_{ij}$. Finally, ∇c denotes gradient of scalar variable c with respect to spatial coordinate \mathbf{x} and $\nabla \cdot \boldsymbol{\sigma}$ is the divergence of tensor $\boldsymbol{\sigma}$.

2.1. Mechanism of corrosion-induced cracking and its current modelling

As shown in Fig. 1, after the initiation of corrosion, the corrosion-induced cracking process of reinforced concrete structures is divided into three main stages: (a) the transport of iron species and their precipitation, (b) the fracture of concrete due to precipitation-induced pressure, and (c) the widening of cracks, which results in enhanced ionic transport through the crack network, and eventually leads to the delamination/spalling of the concrete cover. Our modelling approach to each of these stages is discussed below.

2.1.1. Transport of Fe^{2+} and Fe^{3+} through the concrete matrix and their precipitation

Concrete provides a protective cover to the embedded steel. There are two levels of protection. Firstly, concrete provides a natural barrier to substances causing the corrosion of embedded steel. Secondly, the concrete environment is strongly alkaline with a pH between 12.5 and 13.5 [46], which leads to the formation of a nanometre-thick protective semiconductive layer around the steel surface. This protective layer can be disrupted by various phenomena — typically (i) carbonation caused by carbon dioxide gradually penetrating concrete, changing the pH in the process, and (ii) chloride ions causing a localised breakdown of the passive layer. In both cases, a sufficiently high content of the relevant species needs to be transported to the steel surface before corrosion begins.

This period is traditionally referred to as the initiation phase of corrosion, which is followed by a propagation phase, where an anodic corrosion current density appears on the anodic sites of the steel surface. The electro-chemical process during the propagation stage is quite complex, involving a number of intermediate products, see for instance Furcas et al. [44] for further information and reference. Nevertheless, some key processes can be identified. On anodic sites, atoms of iron are oxidised to Fe^{2+} ions and released from the steel surface. Then, ferrous ions are transported deeper into the concrete pore space (not purely as charged particles but in the form of complex chemical substances). The transport of Fe^{2+} is facilitated by diffusion, electromagnetic migration and advection. Fe^{2+} ions precipitate to ferrous rusts (denoted as $\text{Fe}^{2+}X$ in Fig. 1) after reaching a saturation concentration, and they are oxidised to Fe^{3+} if there is sufficient oxygen supply. Fe^{3+} ions are also transported in the form of complex chemical substances and precipitate to ferric rusts ($\text{Fe}^{3+}Y$ in Fig. 1) after reaching the saturation concentration. For a pH of 8.5, the solubilities of Fe^{2+} and Fe^{3+} are respectively 10^{-3} M and 10^{-10} M [42], where M denotes molarity (moles per L of solution); i.e., the precipitation of Fe^{3+} ions is favoured relative to that of Fe^{2+} . Also, the concentration of Fe^{2+} is constantly diluted by the oxidation to Fe^{3+} . The ratio of dissolved Fe^{2+} and Fe^{3+} and the distribution of their precipitates were found to depend on the corrosion current density [43]. The computational studies of Stefanoni et al. [43] and Zhang and Angst [45] showed that in chloride-free carbonated concrete under natural corrosion currents, concentrations of both dissolved and precipitated Fe^{2+} are significantly lower than of Fe^{3+} and that dissolved iron species can travel for significant distances (millimetres) before precipitating. However, under the high corrosion currents typical of accelerated corrosion tests, the rate of released Fe^{2+} is so high that it quickly reaches the saturation concentration in the close vicinity of the steel surface, blocking the transport of Fe^{2+} further into the concrete pore space. These theoretical results are also supported by experimental study of Zhang et al. [47] who found out that the total content of well-oxidised ferric hydroxyl oxides (specifically α -, β - and γ - $\text{FeO}(\text{OH})$) significantly decreases with increasing applied corrosion current density compared to the content of poorly oxidised FeO and Fe_3O_4 .

Existing models generally assume that rust grows directly from the steel surface. This is a sensible assumption when modelling impressed current tests, where corrosion is accelerated by applying a very high corrosion current density, often in the order of hundreds

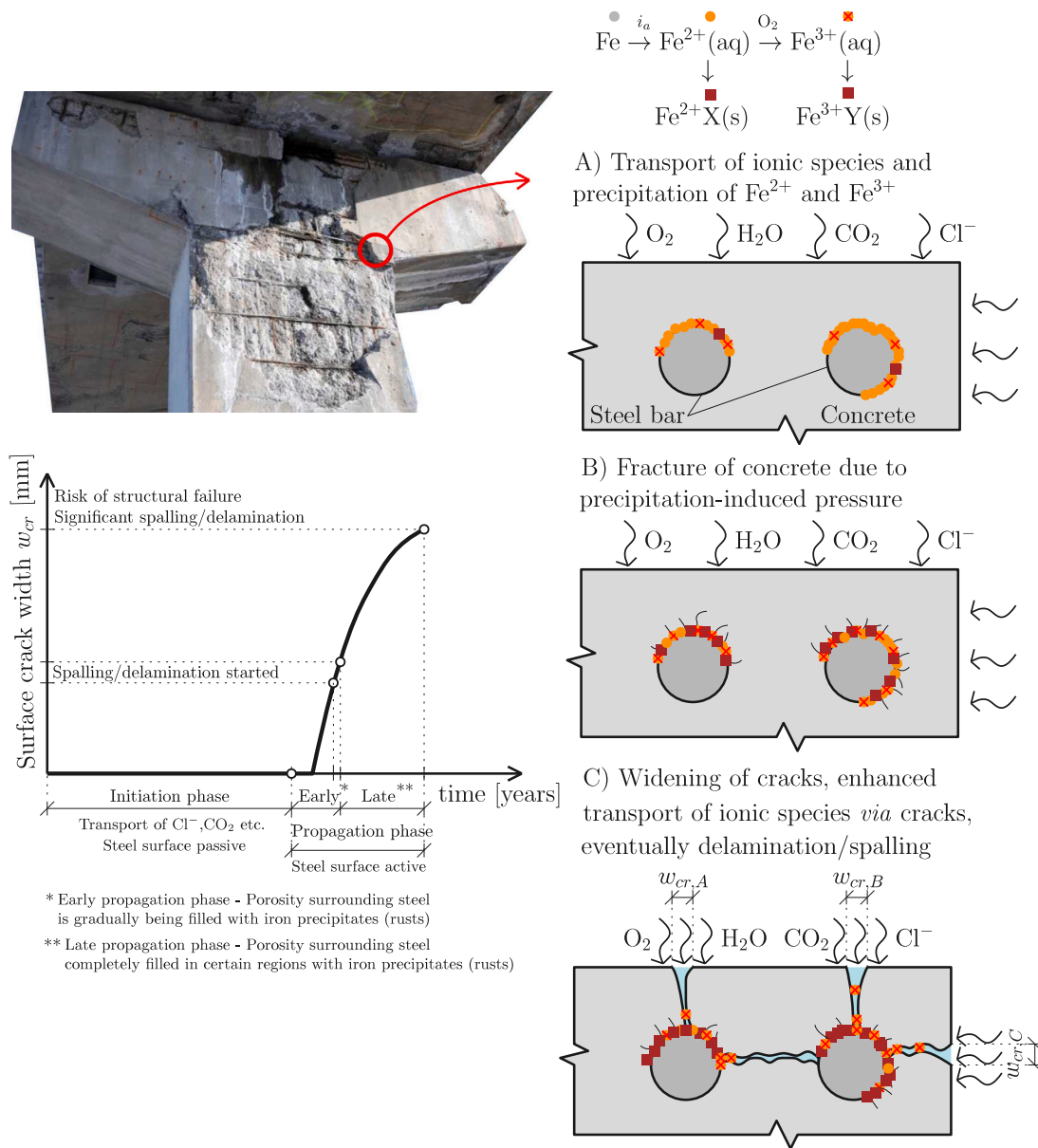


Fig. 1. Schematic illustration of the various stages and phenomena involved in the evolution of corrosion-induced cracking in reinforced concrete.

of $\mu\text{A}/\text{cm}^2$ [43,48]. However, under the low current densities relevant to natural conditions, corrosion products can form in the pore space of concrete as far as several mm away from the steel surface [43]. Some of the currently available models (e.g., Michel et al. [32]) attempt to compensate for this discrepancy by introducing a corrosion accommodating region (CAR) located in close vicinity of steel, which can accommodate initially formed corrosion products in a stress-free state until its saturation, thus delaying the build-up of the rust layer. Other authors have simulated the transport of corrosion products into porosity as a convective diffusion problem [25] or as the flow of incompressible fluid [13]. Even though the transport and evolution of Fe^{2+} and Fe^{3+} in concrete has been simulated by Stefanoni et al. [43], to the best of our knowledge, the modelling of these phenomena has not yet been considered in any corrosion-induced cracking model. As described below, we build upon the standard model for reactive transport in porous media (see, e.g., Ref. [49]) to explicitly resolve: (i) the transport of Fe^{2+} through the concrete matrix, (ii) the oxidation of Fe^{2+} to Fe^{3+} , (iii) the transport of Fe^{3+} through the concrete matrix, (iv) the precipitation of Fe^{2+} and Fe^{3+} in the concrete pore space, and (v) the clogging of the pore space by precipitates (rusts).

2.1.2. Fracture of concrete due to precipitation-induced pressure

When Fe^{2+} ions and Fe^{3+} ions precipitate, the resulting rusts have a significantly lower density than original iron, typically by 3–6 times [42], which allows them to quickly fill concrete pores. Since precipitates are forced to grow under confined conditions in the pore space, they exert pressure on the surrounding concrete matrix. This gradually increasing pressure is arguably the key driving mechanism of corrosion-induced cracking in its early stages [40,42]. This mechanism is likely similar to the one governing salt damage in porous materials [50–56]. The precise governing mechanism in later stages, when the majority of the surrounding pore space is filled with rusts, remains unclear. It is likely influenced by the porosity of the cement paste and cracks, which can facilitate the transport of Fe^{2+} and Fe^{3+} away from the steel surface, reducing the local amount of rusts accumulated at the steel–concrete interface in the process.

Existing models typically consider an expansion coefficient to account for the density mismatch between rusts and steel. A fixed value is commonly assumed, regardless of the corrosion current density, and this value is obtained by fitting data from highly accelerated corrosion tests. However, this approach compromises the predictive capabilities

of the models in the regime of natural corrosion currents, as the composition and distribution of rusts change with the corrosion current. The pressure on concrete induced by accumulating rusts is commonly accounted for by either expanding the rebar (e.g., via a thermal expansion analogy [32,57]) or by prescribing on the rebar boundary a suitable displacement field [16,38,39,58] or internal pressure [59]. However, all these strategies implicitly assume that the precipitates grow directly from the steel surface and that the fracture is driven by the growth of the corrosion layer surrounding the steel rebar. This contrasts with the fact that corrosion products can precipitate even millimetres away from the steel surface [43] and that the initial corrosion-induced fracture is supposedly driven by the accumulation of precipitates in pores surrounding steel. Even if a corrosion accommodating region (CAR) is considered, the accumulation of rusts in CAR is considered stress-free. The proposed model aims at overcoming these shortcomings and developing a framework capable of predicting corrosion-induced cracking for natural corrosion conditions. This is achieved by incorporating two key elements into the modelling: (i) the pressure build-up due to the precipitation of ferrous and ferric ions, and (ii) the nucleation and growth of cracks due to the resulting stress state. The former is introduced into our theory by means of an eigenstrain. This strategy has been successfully employed by Krajcinovic et al. [60] and Basista and Weglewski [61,62] to simulate sulphate attack on concrete. The eigenstrain approach has also been used by Evans et al. [63,64] to describe reaction-driven cracking in rocks due to olivine hydration/carbonation. Thus, an eigenstrain-based model is formulated for the precipitation of corrosion products, which should provide a sound description of the underlying physics of the early propagation phase of corrosion-induced cracking (see Fig. 1). Regarding the fracture process, this is captured by means of a phase-field fracture model [65–67]. Phase-field models have gained remarkable popularity in recent years due to their numerical robustness and ability to capture complex cracking phenomena of arbitrary complexity (see, e.g. [20,68–70] and Refs. therein). In particular, given the quasi-brittle nature of concrete [71], we build our model upon the phase-field fracture model of Wu and co-workers [72,73] (see Appendix A for a numerical comparison with other approaches, illustrating its ability to predict quasi-brittle behaviour).

2.1.3. Sustained cracking and spalling, with enhanced transport of chemical species through cracks

When cracks appear, they become a preferred pathway for the transport of new Fe^{2+} ions and are thus filled preferentially instead of the local pore space, which reduces the build-up of precipitation pressure in these regions. Once cracks reach the concrete surface, depending on the humidity of surrounding environment, the corrosion process can be accelerated because the necessary substances such as oxygen, moisture or chlorides can be easily transported to the steel bar from the concrete surface through the cracks (see Fig. 1). However, cracks also get gradually blocked by precipitates.

Some models have aimed at incorporating the influence of cracks on the distribution of precipitates and induced pressure by modelling the transport of rusts from the steel surface. In the model of Fahy et al. [13], the transport of corrosion products away from the steel surface is assumed to be analogous to the flow of viscous fluid. Ožbolt et al. [25] consider the transport of rust to be a convective diffusion problem. Tran et al. [16] assume that cracks can accommodate a certain volume of corrosion products so that the corrosion-induced pressure is reduced. However, to our best knowledge, explicit modelling of transport and precipitation of Fe^{2+} and Fe^{3+} , and their interplay with cracking, have not yet been accounted for in existing models. The enhancement of diffusivity facilitated by micro-cracks and cracks is here captured by adopting a damage-dependent diffusivity tensor, building upon the work by Wu and De Lorenzis [74]. Other strategies have also been presented to capture the diffusion-fracture interplay, such as penalty approaches [75].

2.2. Reactive transport model

2.2.1. Representative volume element (RVE) and primary fields

Consider the representative volume element (RVE) of concrete (at the vicinity of corroding steel) depicted in Fig. 2. The RVE of concrete consists of a volume V_s occupied by solid matrix with porosity p_0 . Concrete is idealised to be fully saturated with its porosity $p_0 = (V - V_s)/V$ divided between liquid pore solution and iron precipitates (rusts), which are generated by the sequence of chemical reactions from Fe^{2+} and Fe^{3+} ions.

The distribution of liquid pore solution and rusts is described by the liquid volume fraction $\theta_l = V_l/V$ and the precipitate volume fraction $\theta_p = V_p/V$, respectively, while the distribution of Fe^{2+} and Fe^{3+} is described in terms of their concentrations c_{II} and c_{III} , with units of mol per cubic metre of liquid pore solution. It is assumed that the volume of the solid concrete matrix is not changing in time and thus the available porosity p_0 remains constant too. This facilitates the definition of a precipitate saturation ratio as $S_p = \theta_p/p_0$.

The reactive transport problem is solved on a concrete domain Ω^c , depicted in Fig. 3. The boundaries of the concrete domain are the outer boundary Γ and the boundary of steel rebar Γ^s . Here, $\mathbf{n}(\mathbf{x})$ denotes an outward-pointing vector normal to $\Gamma \cup \Gamma^s$. The primary fields for the reactive transport model are

$$c_{II}(\mathbf{x}, t) \in \mathbb{A} = \{\forall t \geq 0 : c_{II}(\mathbf{x}, t) \in W^{1,2}(\Omega^c)\} \quad (1)$$

$$c_{III}(\mathbf{x}, t) \in \mathbb{B} = \{\forall t \geq 0 : c_{III}(\mathbf{x}, t) \in W^{1,2}(\Omega^c)\} \quad (2)$$

$$\theta_p(\mathbf{x}, t) \in \mathbb{C} = \{\forall t \geq 0 : \theta_p(\mathbf{x}, t) \in W^{1,2}(\Omega^c)\} \quad (3)$$

where $W^{1,2}(\Omega^c)$ is the Sobolev space consisting of functions with square-integrable weak derivatives. For $c_{II}(\mathbf{x}, t)$, in addition to a Dirichlet type boundary condition, a Neumann type boundary condition describing the flux of Fe^{2+} from the corroding steel surface is prescribed on the steel boundary Γ^s . The formulation of this boundary condition is introduced further in this section. Let us remark that the pore space of concrete is simplified here to be fully saturated with water, at least in the close vicinity of the rebar. This assumption is presumed to be particularly sensible for well-cured concrete samples in laboratory conditions, which are constantly kept wet. It should be emphasised that the analysis of in-situ structures would require reflecting the variable water saturation caused by periodic wetting and drying cycles, which is the goal of an ongoing research. Assuming full saturation, the volume fraction of pore solution θ_l can be calculated directly from the precipitate volume fraction θ_p as $\theta_l = p_0 - \theta_p$. This means that growing precipitates are presumed to push the required liquid volume fraction of pore solution out of the pores immediately.

2.2.2. Governing equations of reactive transport

Assuming small deformations, we can neglect the velocity of the solid concrete matrix and derive the transport equations for Fe^{2+} , Fe^{3+} and precipitates (rusts) from the condition of mass conservation. The resulting transport equation reads

$$\frac{\partial \tilde{\rho}_\alpha}{\partial t} + \nabla \cdot (\tilde{\rho}_\alpha \mathbf{v}_\alpha) = M_\alpha \theta_l R_\alpha \quad \text{in } \Omega^c, \quad \alpha = II, III, p \quad (4)$$

where $\tilde{\rho}_\alpha$ is the averaged density of species α calculated with respect to the whole RVE, \mathbf{v}_α is the velocity of species α and M_α is the molar mass of species α . R_α describes the resulting rate of the chemical transformation of α summing the production and consumption effects of all the chemical reactions that α is undergoing. In Eq. (4), the term $\tilde{\rho}_\alpha \mathbf{v}_\alpha$ can also be expressed as

$$\tilde{\rho}_\alpha \mathbf{v}_\alpha = \tilde{\rho}_\alpha \tilde{\mathbf{v}}_l + \mathbf{J}_\alpha \quad (5)$$

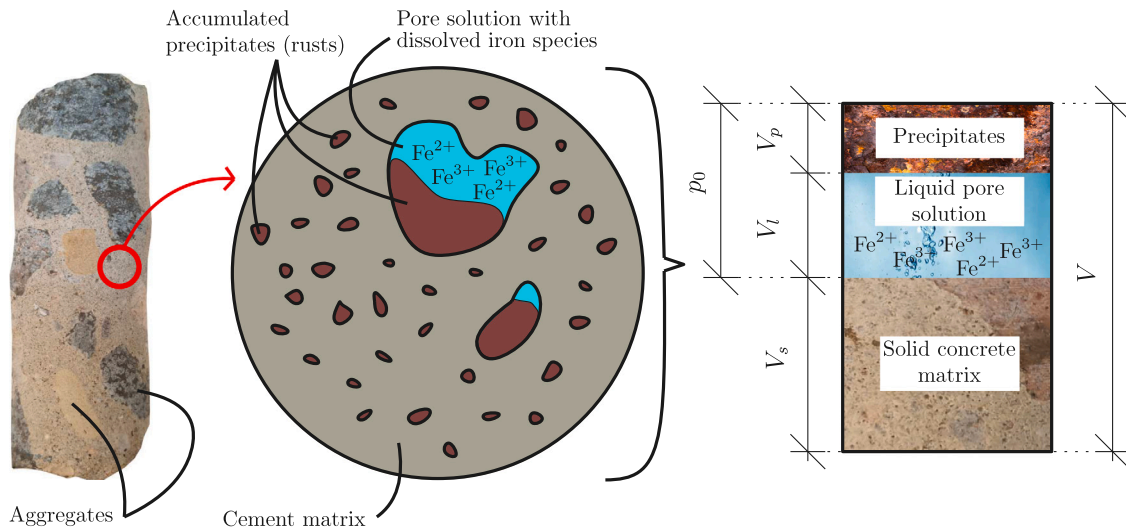


Fig. 2. Schematic illustration of a Representative Volume Element (RVE) of concrete at the vicinity of corroding steel, highlighting the relevant phases.

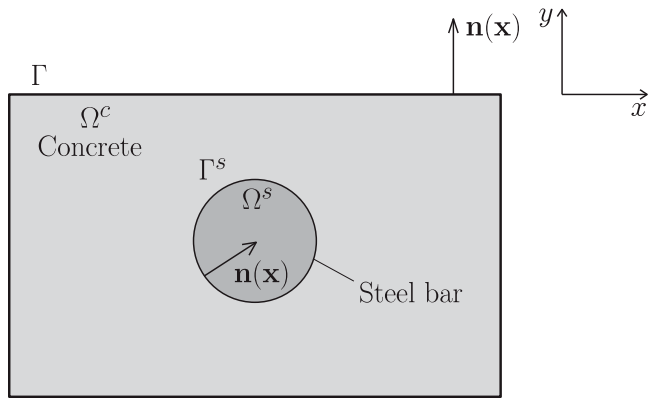


Fig. 3. Graphical illustration of the domain and relevant variables for the chemo-mechanical problem.

where $\tilde{\rho}_\alpha v_l$ is the flux caused by the flow of α with liquid (advection) and J_α is the additional flux caused by the transport of α . Substituting (5) into (4), we get

$$\frac{\partial \tilde{\rho}_\alpha}{\partial t} + \nabla \cdot (\tilde{\rho}_\alpha v_l + J_\alpha) = M_\alpha \theta_l R_\alpha \quad \text{in } \Omega^c \quad (6)$$

The averaged density $\tilde{\rho}_\alpha$ can be expressed based either on the volume fraction θ_α or concentration c_α as

$$\tilde{\rho}_\alpha = \theta_\alpha \rho_\alpha = \theta_l M_\alpha c_\alpha \quad (7)$$

with ρ_α being the intrinsic density of species α with respect to its volume in RVE. Since the precipitates are considered to be immobile (i.e., their total flux is zero) and ρ_c is assumed to be constant both in time and space, we can substitute (7) into (6) and obtain

$$\frac{\partial \theta_p}{\partial t} = \frac{M_p}{\rho_p} \theta_l R_p \quad \text{in } \Omega^c \quad (8)$$

Contrarily to immobile precipitates, Fe^{2+} and Fe^{3+} ions can be transported through the pore space of concrete by advection, diffusion, chemical activity-related movement and electromagnetic migration. Diffusion is assumed to be the dominant phenomenon in the transport of iron ions (as in Refs. [43,45]) and thus the one modelled here. In pore solution, Fick's law reads

$$J_\alpha = -M_\alpha D_\alpha \cdot \nabla c_\alpha, \quad \alpha = II, III \quad (9)$$

where D_α is the second-order diffusivity tensor of species α . However, since we consider transport in a porous medium and not only the pore solution, the diffusion-driven flux term (9) needs to be scaled adequately. This problem has been the subject of many studies, which approached it in different ways. For example Baroghel-Bouny et al. [76] proposed to introduce a saturation ratio-dependent diffusivity which needs to be fitted experimentally. Alternatively, Marchand et al. [49] adopted an integral averaging procedure [77], which is based on the averaging of the transport equation in pore solution over the RVE of the porous material. Thus, as Marchand et al. [49], we write the resulting diffusion term as

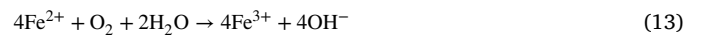
$$J_\alpha = -M_\alpha \theta_l D_\alpha \cdot \nabla c_\alpha, \quad \alpha = II, III \quad (10)$$

The effects of the geometry of the pore space and variation of the cross-section of pores can also be considered by multiplying (10) by additional factors reflecting constrictivity and tortuosity of the pore space, as done by Zhang and Angst [45]. Here, the effects of constrictivity and tortuosity are introduced via D_α . We will adopt (10) as the expression for diffusion-driven flux in porous media and substitute it into (6). If the velocity of liquid v_l and thus the flux related to advection is neglected, we obtain

$$\frac{\partial (\theta_l c_\alpha)}{\partial t} - \nabla \cdot (\theta_l D_\alpha \cdot \nabla c_\alpha) = \theta_l R_\alpha \quad \text{in } \Omega^c, \quad \alpha = II, III \quad (11)$$

2.2.3. Considered chemical reactions

In order to evaluate reaction terms R_{II} , R_{III} and R_p and the boundary condition describing the rate of production of the ferrous ions on the steel surface, let us consider the following system of chemical reactions:



Firstly, Fe^{2+} ions are released from the corroding steel surface because of the electrochemical reaction, as described by (12). Corrosion is assumed to be uniform along the steel surface, such that cathodic and anodic reactions proceed over the entire surface with the same corrosion current density i_a . Since the focus of this study is on the modelling of the corrosion-induced cracking and not predicting the corrosion current density, the latter is taken as an input parameter to the model. Then, by reaction (13), Fe^{2+} ions are oxidised to Fe^{3+}

ions. The possibility and rate of this reaction depend on the availability of oxygen. Its transport is not simulated in this model and a constant oxygen concentration is assumed instead. This simplification is introduced merely to reduce the complexity of the model at the current stage of research. A parametric study on the influence of oxygen concentration (discussed in Appendix C) suggests that unless oxygen is nearly depleted (so that the reaction stops), its concentration does not significantly affect the reaction rate and the resulting concrete damage. It seems reasonable to assume that oxygen will not be entirely depleted during the early propagation phase as there is experimental evidence that even in water-submerged conditions, oxygen in concrete is not entirely depleted in years or even decades [78].

Finally, reaction (14) leads to the precipitation of Fe(OH)₃ or otherwise FeO(OH)+H₂O, which is assumed to be the final corrosion product in this model. Since the focus is on natural corrosion conditions, the precipitation of Fe²⁺ is neglected. This assumption is supported by the results of Stefanoni et al. [43] and Zhang and Angst [45], who have shown that in carbonated chloride-free concrete under natural corrosion currents, the rate of precipitation of Fe²⁺ is significantly slower than that of Fe³⁺. Moreover, it is known that the presence of chloride ions seriously hinders the precipitation of Fe²⁺ [44,79]. In addition, it should be emphasised that reactions (12)–(14) constitute a simplification of a very complex system of reactions, see for instance Furcas et al. [44].

2.2.4. Reaction rates

The rate law for reactions (13)–(14) is often considered to be of the form $R = k_r c_{\alpha_1}^{X_1} c_{\alpha_2}^{X_2} \dots c_{\alpha_N}^{X_N}$, where $c_{\alpha_1}, c_{\alpha_2}, \dots, c_{\alpha_N}$ are the concentrations of reactants and k_r is the rate constant, which has to be measured experimentally, as is the case with the exponents X_i [80]. Here, the rate law for reaction (13) is defined based on the work by Stefanoni et al. [43] and Zhang and Angst [45]. Thus, for a pH higher than approximately 8, the reaction rate is independent of pH [81] and can be written as

$$R_{II} = -k_r^{II \rightarrow III} c_{II} c_{ox} \quad (15)$$

where c_{ox} is the concentration of oxygen dissolved in the pore solution. Since the rate law for the precipitation of Fe³⁺ (reaction (14)) is unknown, we estimate

$$R_p = k_r^{III \rightarrow p} c_{III} \quad (16)$$

Based on (15) and (16), the rate of reaction (13) can be calculated as

$$R_{III} = -R_{II} - R_p = k_r^{II \rightarrow III} c_{II} c_{ox} - k_r^{III \rightarrow p} c_{III} \quad (17)$$

The boundary condition on Γ^s describing the influx of Fe²⁺ released from the steel surface according to reaction (12) reads

$$J_{II} = -\mathbf{n} \cdot (-\mathbf{D}_{II} \cdot \nabla c_{II}) \quad (18)$$

The inward flux J_{II} can also be related to Faraday's law as

$$J_{II} = \frac{2i_a}{z_a F} \quad (19)$$

where i_a is the corrosion current density, F is the Faraday constant and $z_a = 2$ stands for the number of electrons exchanged in anodic reaction (12) per one atom of iron. The factor of two multiplying the right-hand side of (19) results from the stoichiometry of the corrosion reaction (12).

2.3. Precipitation eigenstrain

Due to its simplicity and numerical robustness, the macroscopic stress resulting from the precipitation products is incorporated through an eigenstrain ϵ_* , which is derived from micromechanical considerations [60,82]. In the absence of damage, the small strain tensor $\epsilon =$

$\nabla_s \mathbf{u} = (\nabla \mathbf{u} + (\nabla \mathbf{u})^T)/2$ can be additively decomposed into the elastic part ϵ_e and the precipitation eigenstrain ϵ_* , such that

$$\epsilon = \epsilon_e + \epsilon_* \quad (20)$$

The Cauchy stress can then be readily estimated using the fourth-order elastic stiffness tensor C_e as

$$\sigma = C_e : (\epsilon - \epsilon_*) \quad (21)$$

Inspired by the analytical result of Coussy [53] for isothermal conditions, a linear dependence of ϵ_* on the precipitate saturation ratio $S_p = \theta_p/p_0$ is assumed, such that

$$\epsilon_* = \epsilon_* \mathbf{1} = f(S_p, \phi, \dots) \mathbf{1} \approx C S_p \mathbf{1} \quad (22)$$

where C is a positive constant, to be defined. More complex eigenstrain functions $f(S_p, \phi, \dots)$ can be considered; for example, to capture the influence of pore size or to define a threshold for S_p , below which rust can be accommodated in the pores stress-free. Regarding C , we assume that it is proportional to the volumetric strain ϵ_v resulting from the geometrically unconstrained precipitation of dissolved Fe³⁺. This strain can be calculated as

$$\epsilon_v = \frac{v_p}{(1-r_0)v_{III}} - 1 = \frac{\rho_{III} M_p}{(1-r_0)\rho_p M_{III}} - 1 \quad (23)$$

where $v_\alpha = M_\alpha/\rho_\alpha$ is the molar volume and r_0 is the porosity of rusts. Now, let us firstly calculate the eigenstrain $\epsilon_{**} = \epsilon_* \mathbf{1}$ assuming that rusts have the same mechanical properties as the surrounding concrete matrix. Since concrete is considered to be isotropic, we can write

$$\epsilon_{**} = \frac{1}{3} \epsilon_v S_p \mathbf{1} \quad (24)$$

We then follow Krajcinovic et al. [60] and incorporate a correction factor in Eq. (24) to account for the material property mismatch between rust and concrete. The approach follows the equivalent inclusion analysis by Mura [82], and in particular the case of the spherical inclusion. Thus, assuming that the inhomogeneity is sufficiently far from the boundary to be unaffected by surface tractions \mathbf{t} , the precipitation eigenstrain reads

$$\epsilon_* = \frac{3(1-\nu)K_p}{(1+\nu)K_p + (2-4\nu)K} \epsilon_{**} \quad (25)$$

where K is the bulk modulus of concrete and K_p is the bulk modulus of iron precipitates (rusts). K and K_p are calculated as $K_i = E_i/(3(1-2\nu_i))$, where E_p and ν_p respectively denote the Young's modulus and the Poisson's ratio of iron precipitates (rusts), and E and ν are the associated counterparts for a rust-filled concrete. It remains to consider that the pores in which rusts can accumulate represent a significant part of the total volume of concrete. Thus, the mechanical properties of rust-filled regions of concrete must be a function of the precipitate volume fraction θ_p , and the mechanical properties of rust-free concrete (E_c, ν_c) and rust (E_p, ν_p). Making use of the rule of mixtures,

$$E = (1-\theta_p)E_c + \theta_p E_p, \quad \nu = (1-\theta_p)\nu_c + \theta_p \nu_p \quad (26)$$

and thus the precipitation eigenstrain ϵ_* is given by

$$\epsilon_* = C S_p \mathbf{1}, \quad \text{with } C = \frac{(1-\nu)K_p}{(1+\nu)K_p + (2-4\nu)K} \left(\frac{\rho_{III} M_p}{(1-r_0)\rho_p M_{III}} - 1 \right) \quad (27)$$

2.4. Phase-field description of precipitation-induced cracks

2.4.1. A generalised structure

A general formulation of phase-field fracture accounting for precipitation eigenstrain is first presented. Of interest is the nucleation and growth of cracks in a concrete domain $\Omega^c \subset \mathbb{R}^d$, $d = 2, 3$ (see Fig. 4), where d is the geometrical dimension of the problem. The domain $\Omega^s \subset \mathbb{R}^d$ corresponds to the steel rebars. The boundary of the

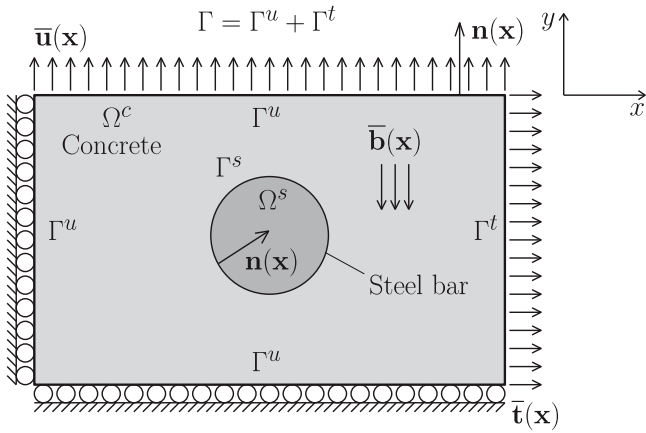


Fig. 4. Graphical illustration of the domain and relevant variables for the deformation-fracture problem.

concrete domain Ω^c is $\Gamma \cup \Gamma^s$, where Γ^s is the boundary with steel rebars and Γ is an outer concrete boundary. The boundary Γ can be decomposed into $\Gamma = \Gamma^u \cup \Gamma^t$, where Γ^u is the portion of boundary with prescribed displacements $\bar{\mathbf{u}}(\mathbf{x})$ and Γ^t is the portion of boundary where tractions $\bar{\mathbf{t}}(\mathbf{x})$ are prescribed. The outward-pointing normal vector to $\Gamma \cup \Gamma^s$ is $\mathbf{n}(\mathbf{x})$ and $\bar{\mathbf{b}}(\mathbf{x})$ denotes a prescribed volume force vector acting on $\Omega = \Omega^c + \Omega^s$. The primary (unknown) fields are the displacement components

$$\mathbf{u}(\mathbf{x}, t) \in \mathbb{U} = \{\forall t \geq 0 : \mathbf{u}(\mathbf{x}, t) \in W^{1,2}(\Omega)^d; \mathbf{u}(\mathbf{x}, t) = \bar{\mathbf{u}}(\mathbf{x}, t) \text{ in } \Gamma^u\} \quad (28)$$

and the phase-field variable

$$\begin{aligned} \phi(\mathbf{x}, t) &\in \mathbb{P} \\ &= \{\forall t \geq 0 : \phi(\mathbf{x}, t) \in W^{1,2}(\Omega^c); 0 \leq \phi(\mathbf{x}, t) \leq 1 \text{ in } \Omega^c; t_1 \leq t_2 \implies \phi(\mathbf{x}, t_1) \leq \phi(\mathbf{x}, t_2)\} \end{aligned} \quad (29)$$

where $W^{1,2}(\Omega^c)^d$ is the Cartesian product of d Sobolev spaces $W^{1,2}(\Omega^c)$ consisting of functions with square-integrable weak derivatives. The phase-field variable characterises the current state of damage and can be transformed into the degradation function $g(\phi) \in \mathbb{S} = \{g(\phi) \in W^{1,2}(\Omega^c); 0 \leq g(\phi) \leq 1 \text{ in } \Omega^c\}$, which reflects the remaining integrity of the material. The degradation function g is expected to be decreasing from 1 for $\phi = 0$, which corresponds to the initial undamaged material, to 0 for $\phi = 1$, which corresponds to the fully cracked material. The steel domain Ω^s is expected to remain elastic.

For elasto-damaged material, quasi-static conditions are assumed, such that the small strain tensor reads $\boldsymbol{\varepsilon} = \nabla_s \mathbf{u} = (\nabla \mathbf{u} + (\nabla \mathbf{u})^T)/2$ and the Cauchy stress tensor $\boldsymbol{\sigma}$ is given by

$$\boldsymbol{\sigma} = g(\phi) \mathbf{C}_e : (\boldsymbol{\varepsilon} - \boldsymbol{\varepsilon}_*) \quad (30)$$

Now, let us adopt the minimum total energy principle and formulate the total energy functional Π of our phase-field fracture problem. The total energy functional reads

$$\Pi(\mathbf{u}, \phi) = E_{std}(\mathbf{u}, \phi) + E_{reg}(\phi) + D(\phi_n, \phi) + B(\mathbf{u}) + T(\mathbf{u}) \quad (31a)$$

$$\begin{aligned} E_{std}(\mathbf{u}, \phi) &= \frac{1}{2} \int_{\Omega^c} g(\phi) (\nabla_s \mathbf{u} - \boldsymbol{\varepsilon}_*) : \mathbf{C}_e^c : (\nabla_s \mathbf{u} - \boldsymbol{\varepsilon}_*) dV \\ &\quad + \frac{1}{2} \int_{\Omega^s} \nabla_s \mathbf{u} : \mathbf{C}_e^s : \nabla_s \mathbf{u} dV \end{aligned} \quad (31b)$$

$$E_{reg}(\phi) = \int_{\Omega^c} \varepsilon_{reg}(\phi) dV = \int_{\Omega^c} D(1)\ell^2 \|\nabla \phi\|^2 dV \quad (31c)$$

$$D(\phi_n, \phi) = \begin{cases} \int_{\Omega^c} (D(\phi) - D(\phi_n)) dV & \text{if } \phi \geq \phi_n \text{ in } \Omega^c \\ +\infty & \text{otherwise} \end{cases} \quad (31d)$$

$$B(\mathbf{u}) = - \int_{\Omega} \bar{\mathbf{b}} \cdot \mathbf{u} dV \quad (31e)$$

$$T(\mathbf{u}) = - \int_{\Gamma} \bar{\mathbf{t}} \cdot \mathbf{u} dS \quad (31f)$$

In (31), \mathbf{C}_e^c and \mathbf{C}_e^s are the fourth-order elastic stiffness tensor of concrete and steel respectively. \mathbf{C}_e^c and \mathbf{C}_e^s are calculated as $\mathbf{C}_e^i = \lambda^i \mathbf{1} \otimes \mathbf{1} + 2\mu^i \mathbf{I}$, where λ^i and μ^i are the Lamé constants of steel or concrete. $D(\phi_n, \phi)$ is the dissipation distance evaluating dissipation caused by the cracking process changing phase-field from ϕ_n to ϕ , where ϕ_n is the previously reached phase-field distribution. In terms of the numerical solution, ϕ_n is the phase-field distribution in the previous time step. $B(\mathbf{u})$ is the potential energy related to prescribed body forces and $T(\mathbf{u})$ is the potential energy related to prescribed surface tractions. The energy stored in the system is given by $E_{std}(\mathbf{u}, \phi) + E_{reg}(\phi)$, where $E_{std}(\mathbf{u}, \phi)$ is a standard term which is commonly used in damage mechanics and $E_{reg}(\phi)$ is a regularisation term. The purpose of the regularisation term $E_{reg}(\phi)$ in (31) is to ensure that the phase-field variable ϕ is smooth over the process zone adjacent to the crack and to act as a localisation limiter. For this reason, $E_{reg}(\phi)$ is constructed to depend on the Cartesian norm of $\nabla \phi$ and damage distributions with high gradients are thus disadvantageous for the considered physical system, as it strives to minimise its total energy. In $E_{reg}(\phi)$, ℓ is a characteristic phase field length scale that governs the size of the process zone [83]. From a numerical point of view, the implications of the non-locality of the model is that mesh objective results can be attained if the characteristic element length h in the process zone is sufficiently small (5–7 times smaller than ℓ [84]). The parameter $D(1)$ [J m^{-3}] in $E_{reg}(\phi)$ in (31) is the density of energy dissipated by the complete failure process and it should be understood as a scaling parameter of $E_{reg}(\phi)$. The dissipation density function $D(\phi)$ also determines the dissipation distance $D(\phi_n, \phi)$ (31d) and quantifies the irreversible energy density consumed by the damage process. The infinity term in (31d) enforces the irreversibility of damage evolution, i.e., ensures that the phase-field variable cannot decrease in time.

According to the minimum total energy principle, we search for the global minimum of the functional Π , defined in (31), if such a global minimum exists. From functional analysis, the optimality condition requires the first variation of $\Pi(\mathbf{u}, \phi)$ to be non-negative for all admissible variations $\delta \mathbf{u}$ and $\delta \phi$, where

$$\delta \mathbf{u}(\mathbf{x}, t) \in \mathbb{V} = \{\forall t \geq 0 : \delta \mathbf{u}(\mathbf{x}, t) \in W^{1,2}(\Omega)^d; \delta \mathbf{u}(\mathbf{x}, t) = \mathbf{0} \text{ in } \Gamma^u\} \quad (32)$$

$$\delta \phi(\mathbf{x}, t) \in \mathbb{W} = \{\forall t \geq 0 : \delta \phi(\mathbf{x}, t) \in W^{1,2}(\Omega^c)\} \quad (33)$$

The weak formulation of our problem of mechanical fracture thus reads

$$\begin{aligned} \delta \Pi(\mathbf{u}, \phi, \delta \mathbf{u}, \delta \phi) &= \int_V g(\phi) (\nabla_s \mathbf{u} - \boldsymbol{\varepsilon}_*) : \mathbf{C}_e : \nabla_s \delta \mathbf{u} dV \\ &\quad + \frac{1}{2} \int_V \frac{dg(\phi)}{d\phi} \delta \phi (\nabla_s \mathbf{u} - \boldsymbol{\varepsilon}_*) : \mathbf{C}_e : (\nabla_s \mathbf{u} - \boldsymbol{\varepsilon}_*) dV \\ &\quad + 2 \int_V D(1)\ell^2 \nabla \phi \cdot \nabla \delta \phi dV + \int_V \frac{dD(\phi)}{d\phi} \delta \phi dV \\ &\quad - \int_V \bar{\mathbf{b}} \cdot \delta \mathbf{u} dV - \int_V \bar{\mathbf{t}} \cdot \delta \mathbf{u} dV \geq 0 \quad \forall \delta \mathbf{u} \in \mathbb{V}, \delta \phi \in \mathbb{W} \end{aligned} \quad (34)$$

It can be shown that if the solution (\mathbf{u}, ϕ) that satisfies variational inequality (34) is sufficiently regular/smooth, then it satisfies the set of equations and inequalities in a strong form, which reads

$$\nabla \cdot (g(\phi) \mathbf{C}_e : (\nabla_s \mathbf{u} - \boldsymbol{\varepsilon}_*)) + \bar{\mathbf{b}} = 0 \quad \text{in } \Omega^c \quad (35a)$$

$$- \frac{dg(\phi)}{d\phi} \frac{1}{2} (\nabla_s \mathbf{u} - \boldsymbol{\varepsilon}_*) : \mathbf{C}_e : (\nabla_s \mathbf{u} - \boldsymbol{\varepsilon}_*) + 2D(1)\ell^2 \nabla^2 \phi - \frac{dD(\phi)}{d\phi} = 0 \quad \text{in } \Omega^{\phi(t)} \quad (35b)$$

$$- \frac{dg(\phi)}{d\phi} \frac{1}{2} (\nabla_s \mathbf{u} - \boldsymbol{\varepsilon}_*) : \mathbf{C}_e : (\nabla_s \mathbf{u} - \boldsymbol{\varepsilon}_*) + 2D(1)\ell^2 \nabla^2 \phi - \frac{dD(\phi)}{d\phi} < 0 \quad \text{in } \Omega^c \setminus \Omega^{\phi(t)} \quad (35c)$$

where $\nabla^2\phi$ is the Laplacian operator and Ω^ϕ is the active part of the damage zone, i.e., the part in which damage is growing, such that

$$\Omega^\phi(t) = \left\{ \mathbf{x} \in \Omega^c; \frac{d\phi(\mathbf{x}, t)}{dt} > 0 \right\} \quad (36)$$

The governing Eqs. (35) are accompanied by the following boundary conditions

$$\mathbf{u} = \bar{\mathbf{u}} \quad \text{in } \Gamma^u \quad (37a)$$

$$\boldsymbol{\sigma} \cdot \mathbf{n} = \bar{\mathbf{t}} \quad \text{in } \Gamma^t \quad (37b)$$

$$\nabla\phi \cdot \mathbf{n} = 0 \quad \text{in } \Gamma \cup \Gamma^s \quad (37c)$$

$$\nabla\phi \cdot \mathbf{n} \geq 0 \quad \text{in } \Gamma^\phi \quad (37d)$$

with Γ^ϕ being the boundary of Ω^ϕ .

The inequality ((35)c) can be reformulated as a variational equality to solve the system of equations without using ‘ad hoc’ solvers [72,73]. This is achieved by replacing the so-called crack driving force $H = (\nabla_s \mathbf{u} - \boldsymbol{\varepsilon}_*) : \mathbf{C}_e : (\nabla_s \mathbf{u} - \boldsymbol{\varepsilon}_*)/2$ in (34) and (35) with

$$H(t) = \max_{t \in (0, T)} (\bar{H}, H(t)) \quad (38)$$

where the crack driving force history function $H(t)$ calculates the maximum value of the crack driving force $H(t)$ that has been reached during the loading process, with \bar{H} being the threshold for damage nucleation. Eq. (38) enforces damage irreversibility. Thus, the resulting weak formulation can be stated as

$$\begin{aligned} \delta\Pi(\mathbf{u}, \phi, \delta\mathbf{u}, \delta\phi) &= \int_V g(\phi)(\nabla_s \mathbf{u} - \boldsymbol{\varepsilon}_*) : \mathbf{C}_e : \nabla_s \delta\mathbf{u} \, dV + \int_V \frac{dg(\phi)}{d\phi} \delta\phi H(t) \, dV \\ &+ \int_V 2D(1)\ell^2 \nabla\phi \cdot \nabla\delta\phi \, dV + \int_V \frac{dD(\phi)}{d\phi} \delta\phi \, dV \\ &- \int_V \bar{\mathbf{b}} \cdot \delta\mathbf{u} \, dV - \int_V \bar{\mathbf{t}} \cdot \delta\mathbf{u} \, dV = 0 \quad \forall \delta\mathbf{u} \in \mathbb{V}, \delta\phi \in \mathbb{W} \end{aligned} \quad (39)$$

with the corresponding strong formulation being

$$\nabla \cdot (g(\phi)\mathbf{C}_e : \nabla_s \mathbf{u} - \boldsymbol{\varepsilon}_*) + \bar{\mathbf{b}} = 0 \quad \text{in } \Omega^c \quad (40a)$$

$$-\frac{dg(\phi)}{d\phi} H(t) + 2D(1)\ell^2 \nabla^2 \phi - \frac{dD(\phi)}{d\phi} = 0 \quad \text{in } \Omega^c \quad (40b)$$

which is complemented by the boundary conditions ((37)a)–((37)c). The presented scheme can be generalised to existing phase-field fracture models upon appropriate choices of dissipation density D , degradation function $g(\phi)$ and crack driving force history function $H(t)$.

2.4.2. Particularisation to quasi-brittle fracture behaviour

Of interest here is to particularise the generalised formulation presented in the previous section to a phase-field fracture model that mimics the quasi-brittle behaviour of concrete. As showcased in Appendix A, the so-called phase-field cohesive zone model (PF-CZM) by Wu and co-workers [72,73] can capture the softening behaviour typical of concrete-like materials. Thus, appropriate constitutive choices are made to particularise the generalised formulation presented above to a PF-CZM-based model for precipitation-induced cracking. The dissipation function is chosen to be [72]:

$$D(\phi) = D(1)\alpha(\phi) = D(1)(2\phi - \phi^2) \quad (41)$$

For a one-dimensional problem, the final distribution of ϕ in the completely cracked state can be solved analytically and its spatial distribution then determines the spatial distribution of dissipated energy densities $D(\phi)$ and $\varepsilon_{reg}(\phi)$ from (31). The integral of $D(\phi) + \varepsilon_{reg}(\phi)$ over the damage zone then determines the energy consumed by the complete failure process and could be thus interpreted as fracture energy G_f . Based on these ideas, the fracture energy could be expressed as

$$G_f = \pi D(1)\ell \quad (42)$$

The crack driving force $H(t)$ and its threshold \bar{H} in (38) are then defined as follows [73]

$$H(t) = \frac{\langle \bar{\sigma}_1 \rangle^2}{2\bar{E}}, \quad \bar{H} = \frac{f_t^2}{2\bar{E}} \quad (43)$$

where f_t is the tensile strength and $\bar{\sigma}_1$ is the maximum principal value of the effective stress tensor $\bar{\boldsymbol{\sigma}} = \mathbf{C}_e : (\boldsymbol{\varepsilon} - \boldsymbol{\varepsilon}_*)$. The positive part function is defined as $\langle x \rangle = (x + |x|)/2$ and $\bar{E} = \lambda + 2\mu$ is the elongation modulus. Eq. (43) means that the onset of damage is controlled by the Rankine criterion based on the maximum principal stress. Here, one should note that before the onset of damage, the effective stress $\bar{\boldsymbol{\sigma}}$ is equal to the nominal stress $\boldsymbol{\sigma}$, since $g(0) = 1$. Only tensile failure is considered here, hence the positive part operator. By taking the square of the stress divided by the elastic modulus and multiplied by 1/2, we convert the stress into the density of elastically stored energy, which is the original definition of the crack driving force. However, this equivalence holds only under uniaxial tension, if we use the Young modulus in this conversion. Wu [73] used the elongation (oedometric) modulus, and so the equivalence would hold under uniaxial strain.

Finally, the degradation function $g(\phi)$ is chosen in such a way so as to match the required initial slope of the softening curve of the considered stress-strain response and the required mode-I crack opening at complete failure, the latter resulting from a well-defined cohesive zone model with the chosen softening curve [72,85]. This considers fracture as the process of separation of the material in the cohesive zone located at the crack tip, with the crack opening resisted by cohesive tractions. Based on these considerations, Wu [72] set

$$g(\phi) = \frac{(1 - \phi)^p}{(1 - \phi)^p + a_1\phi(1 + a_2\phi + a_3\phi^2)} \quad (44)$$

in which parameters $p \geq 2$, $a_1 > 0$, a_2 and a_3 allow calibration of the model. Substituting (41)–(44) into (40), the governing equations of the deformation-fracture problem read

$$\nabla \cdot (g(\phi)\mathbf{C}_e : \nabla_s \mathbf{u} - \boldsymbol{\varepsilon}_*) + \bar{\mathbf{b}} = 0 \quad \text{in } \Omega^c \quad (45a)$$

$$-\frac{1}{2} \frac{dg(\phi)}{d\phi} H(t) + \frac{\ell}{\pi} G_f \nabla^2 \phi - \frac{G_f}{\pi\ell} (1 - \phi) = 0 \quad \text{in } \Omega^c \quad (45b)$$

The governing equations are accompanied by the set of boundary conditions ((37)a)–((37)c). It remains to calibrate $g(\phi)$ by appropriately choosing p , a_1 , a_2 and a_3 in (44). For example, a particular choice allows to recover the brittle phase-field fracture model of Bourdin et al. [86]. Other choices lead to linear, hyperbolic or exponential softening laws [72]. For a quasi-brittle concrete considered in this model, commonly used softening curve by Cornelissen et al. [87] is employed. Wu [72] showed that the Hordijk–Cornelissen softening curve can be approximated with the following choice of the parameters of the degradation function $g(\phi)$:

$$a_1 = \frac{4}{\pi} \frac{\ell_{irw}}{\ell}, \quad a_2 = 2\beta_k^{2/3} - p - \frac{1}{2}, \quad a_3 = \begin{cases} 1/2\beta_w^2 - a_2 - 1 & \text{if } p = 2 \\ 0 & \text{if } p > 2 \end{cases} \quad (46)$$

In (46), $\ell_{irw} = \bar{E}G_f/f_t^2$ is the Irwin internal length. The constants β_w and β_k are given by

$$\beta_w = \frac{w_c}{w_{c,lin}}, \quad w_{c,lin} = \frac{2G_f}{f_t} \quad (47)$$

$$\beta_k = \frac{k_0}{k_{0,lin}} \geq 1, \quad k_{0,lin} = -\frac{f_t^2}{2G_f} \quad (48)$$

where w_c is the limit crack opening given by the chosen softening curve and k_0 is the initial slope of the selected softening curve. Ratios β_w and β_k then compare w_c and k_0 with the values of the parameters governing the linear softening curve, $w_{c,lin}$ and $k_{0,lin}$, respectively. Finally, the Hordijk–Cornelissen softening curve is recovered by setting

$$p = 2, \quad w_c = 5.1361 \frac{G_f}{f_t}, \quad k_0 = -1.3546 \frac{f_t^2}{G_f} \quad (49)$$

These choices deliver a length-insensitive phase-field fracture model, provided that the phase field length scale chosen is sufficiently small so as to ensure that $\ell \leq \min(8\ell_{irw}/3\pi, L/100 \sim L/50)$, where L is the characteristic length of the structure in the sense of its dominant geometric proportions.

2.4.3. Damage-dependent diffusivity tensor

The role of fracture networks in enhancing the transport of ionic species is captured by means of a second-order diffusivity tensor \mathbf{D}_α , see Eq. (11). Cracks filled with pore solution facilitate diffusion relative to the surrounding concrete matrix and thus become preferable transport pathways for dissolved iron species. This directly influences the distribution of precipitates because their accumulation is locally slowed down if iron species can escape through adjacent micro-cracks or cracks. Inspired by the work of Wu and De Lorenzis [74], we calculate the product of liquid volume fraction and diffusivity tensor in (11) as

$$\theta_l \mathbf{D}_\alpha = \theta_l(1 - \phi) D_{m,\alpha} \mathbf{1} + \phi D_{c,\alpha} \mathbf{1}, \quad \alpha = II, III \quad (50)$$

where $D_{m,\alpha}$ is an isotropic diffusivity of the considered species in concrete. The parameter $D_{c,\alpha}$ controls the anisotropic diffusivity of the cracked material [74], and generally $D_c \gg D_m$. It should be noted that the original formulation of Wu and De Lorenzis [74] leads to an anisotropic diffusivity tensor because the diffusivity is enhanced only in the direction of the crack, i.e. perpendicular to the gradient of ϕ . However, in the proposed model, an isotropic diffusivity enhancement is considered because it was found to be more numerically robust and to better reflect the enhanced diffusivity of damaged concrete adjacent to steel rebar before the full localisation of cracks.

2.5. Overview of the governing equations

We conclude the description of our theory by recalling its governing equations:

$$\nabla \cdot (g(\phi) \mathbf{C}_e : \nabla_s \mathbf{u} - \boldsymbol{\varepsilon}_*) + \bar{\mathbf{b}} = 0 \quad \text{in } \Omega^c \quad (51a)$$

$$-\frac{1}{2} \frac{dg(\phi)}{d\phi} \mathcal{H}(t) + \frac{\ell}{\pi} G_f \nabla^2 \phi - \frac{G_f}{\pi \ell} (1 - \phi) = 0 \quad \text{in } \Omega^c \quad (51b)$$

$$\frac{\partial (\theta_l c_{II})}{\partial t} - \nabla \cdot (\theta_l \mathbf{D}_{II} \cdot \nabla c_{II}) = \theta_l R_{II} \quad \text{in } \Omega^c \quad (51c)$$

$$\frac{\partial (\theta_l c_{III})}{\partial t} - \nabla \cdot (\theta_l \mathbf{D}_{III} \cdot \nabla c_{III}) = \theta_l R_{III} \quad \text{in } \Omega^c \quad (51d)$$

$$\frac{\partial \theta_p}{\partial t} = \frac{M_p}{\rho_p} \theta_l R_p \quad \text{in } \Omega^c \quad (51e)$$

for the five primary field variables — displacement vector \mathbf{u} , phase-field variable ϕ , Fe^{2+} ions concentration c_{II} , Fe^{3+} ions concentration c_{III} , and precipitate volume fraction θ_p . The governing equations (51) are accompanied by boundary conditions

$$\mathbf{u} = \bar{\mathbf{u}} \quad \text{in } \Gamma^u \quad (52a)$$

$$\nabla \phi \cdot \mathbf{n} = 0 \quad \text{in } \Gamma \cup \Gamma^s \quad (52b)$$

$$\mathbf{n} \cdot (\mathbf{D}_{II} \cdot \nabla c_{II}) = 0 \quad \text{in } \Gamma, \mathbf{n} \cdot (\mathbf{D}_{II} \cdot \nabla c_{II}) = \frac{2i_a}{z_a F} \quad \text{in } \Gamma^s \quad (52c)$$

$$\mathbf{n} \cdot (\mathbf{D}_{III} \cdot \nabla c_{III}) = 0 \quad \text{in } \Gamma \cup \Gamma^s \quad (52d)$$

Eq. (51e) does not require any boundary condition because it does not contain any space derivatives. We solve the resulting system of equations using the finite element method and discretising the domain $\Omega^c \cup \Omega^s$ with linear triangular elements. The phase-field variable is not solved in the steel domain Ω^s and steel is assumed to be linear elastic.

Table 1

Model parameters: mechanical properties of concrete, based on the measurements by Pedrosa and Andrade [89] and literature data.

| Properties of concrete - 28 and 147 days cured samples | | | |
|--|-------------|-------------------|--------|
| Parameter | Value | Unit | Source |
| Compressive strength | 37.5 & 54.7 | MPa | [89] |
| $f_{c,cube}$ | | | |
| Tensile strength f_t | 2.2 & 3.9 | MPa | [89] |
| Young's modulus E_c | 33 & 36 | GPa | [90] |
| Poisson's ratio ν_c | 0.2 & 0.2 | – | [90] |
| Fracture energy G_f | 95 & 114 | N m ⁻¹ | [91] |

A staggered solution scheme is used [88]. The model is numerically implemented using the finite element package COMSOL Multiphysics.¹

3. Results

The ability of the theoretical and computational framework presented to capture experimental data and simulate corrosion-induced cracking in complex scenarios is showcased by means of representative examples. First, the impressed current tests of Pedrosa and Andrade [89] are modelled to benchmark surface crack width predictions against their measurements (Section 3.1). Then, in Section 3.2, the analysis is extended to boundary value problems involving multiple rebars, to assess the model capabilities in capturing crack interaction and the associated gradual delamination/spalling of the concrete cover. Finally, a three-dimensional boundary value problem is simulated in Section 3.3, to showcase the ability of the framework to address large-scale studies of technological importance.

3.1. Model validation against the experiments by Pedrosa and Andrade [89] and analysis

3.1.1. Choice of model parameters

The modelling framework takes as input parameters that have a physical basis and can be independently measured. Thus, when possible, the magnitudes of the model parameters were taken from the measurements by Pedrosa and Andrade [89]. For those properties for which measurements were not conducted, parameter values are taken from the literature. The mechanical properties of concrete are listed in Table 1, for samples cured for both 28 and 147 days. The compressive strength is taken from the cube samples measurements by Pedrosa and Andrade [89] and the fracture energy is determined assuming crushed aggregates in the formula of Bažant and Becq-Giraudon [91].

The remaining model parameters are given in Table 2. These are the properties of rust, the transport properties of concrete and other relevant chemical properties. There is some scatter within the mechanical properties of rust reported in the literature. Two intermediate values within the range reported by Zhao and Jin [92] are assumed for the Young's modulus and Poisson's ratio of rust. The molar mass of rust is estimated as the molar mass of $\text{FeO(OH)} + \text{H}_2\text{O}$, the rust density is taken as the density of $\beta\text{-FeO(OH)}$ (Akaganeite), a commonly found rust in chloride contaminated concrete, and the rust porosity r_0 is taken to be an intermediate value from those reported by Ansari et al. [93].

In regards to the transport properties of concrete, the initial (undamaged) concrete diffusivity ($\theta_l D_{m,II}$ and $\theta_l D_{m,III}$) is estimated from the known diffusivity of the species in water, assuming that the ratio between the diffusivity in water and concrete is approximately the same as for chloride ions. On the other side, the transport properties through cracks ($D_{c,II}$ and $D_{c,III}$) are estimated as the diffusivity in pore solution, assuming that cracks are filled with water. The porosity of

¹ The COMSOL model developed is made freely available at <https://www.imperial.ac.uk/mechanics-materials/codes>.

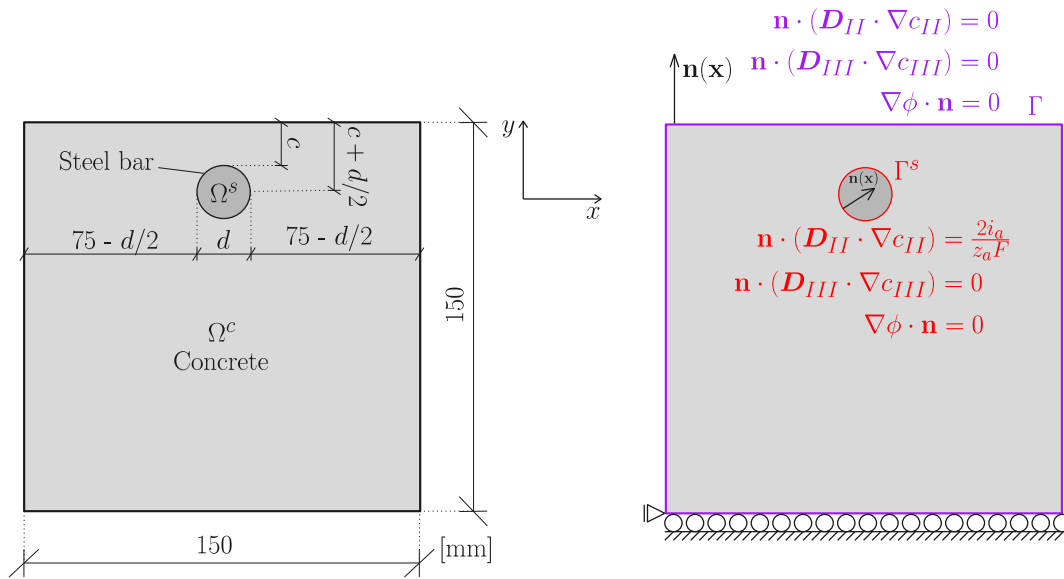


Fig. 5. Geometry and boundary conditions of the cross-section of concrete samples used for the simulation of the impressed current tests by Pedrosa and Andrade [89]. Dimensions are given in mm.

Table 2

Model parameters: properties of rust, transport properties of concrete and other relevant chemical properties.

| Parameter | Value | Unit | Source |
|---|-----------------------|--|---------|
| Properties of rust (FeO(OH) + H ₂ O) | | | |
| Young's modulus E_p | 440 | MPa | [92] |
| Poisson's ratio ν_p | 0.4 | – | [92] |
| Porosity r_0 | 0.16 | – | [93] |
| Molar mass of rust M_p | 106.85 | g mol ⁻¹ | |
| Density of rust ρ_p | 3560 | kg m ⁻³ | [92] |
| Transport properties of concrete | | | |
| Porosity p_0 | 0.26 | – | [94] |
| Initial concrete diffusivity $\theta_1 D_{m,II}$ and $\theta_1 D_{m,III}$ | 10 ⁻¹¹ | m ² s ⁻¹ | [43] |
| Cracked concrete diffusivity $D_{c,II}$ and $D_{c,III}$ | 7 · 10 ⁻¹⁰ | m ² s ⁻¹ | [43,95] |
| Other chemical properties | | | |
| Rate constant $k_r^{II \rightarrow III}$ | 0.1 | mol ⁻¹ m ³ s ⁻¹ | [43] |
| Rate constant $k_r^{III \rightarrow p}$ | 2 · 10 ⁻⁴ | s ⁻¹ | [95] |
| Oxygen concentration c_{ox} | 0.28 | mol m ⁻³ | [45] |

concrete is estimated from the seminal work of Powers and Brownyard [94], assuming that only the porosity of the cement paste is relevant in the close vicinity of steel rebars and a degree of hydration of 0.9, as the samples were well-cured and had high water to cement ratio [89]. Importantly, it is well-known that porosity at the steel–concrete interface (SCI) could be significantly larger than in the bulk concrete, providing considerable space for rust accumulation. In order to reflect this, a 0.2 mm layer around the rebar with a porosity twice as high as the rest of the sample is considered (i.e., $p_0 = 0.52$ within the SCI).² Within sensible values [96], the thickness of SCI has been found to have a very small impact on the resulting surface crack width (see Fig. C.1(f) in Appendix C). The remaining chemical properties are taken from the literature or as an intermediate value of reported values.

² The precipitate saturation ratio in the SCI is calculated with respect to the basic bulk porosity.

It should also be noted that the molar mass and the intrinsic density of Fe³⁺ are considered to be the same as for iron. For the steel rebar, a Young's modulus of 205 GPa and a Poisson's ratio of 0.28 are assumed, as these are common values for steel.

Triangular finite elements are used to discretise the concrete domain, with the mesh being finer in the region close to the rebar and, particularly, within the SCI. The maximum element size in the SCI is 0.1 mm and 0.6 mm in the remaining regions of interest. Since the phase field length scale is chosen to be $\ell = 3$ mm, five times larger than the maximum element size in the characteristic region, mesh objective results are expected [84]. The boundary conditions are given in Fig. 5.

3.1.2. Validation of the model — the impressed current test of Pedrosa and Andrade [89]

To validate the proposed model, corrosion-induced cracking simulations are conducted mimicking the conditions of the impressed current tests by Pedrosa and Andrade [89]. The tested samples were 500 mm long concrete prisms, longitudinally reinforced with a single 600 mm long steel bar with a diameter of 16 mm. The concrete cover of the steel rebar was either 20 or 40 mm thick. Due to the relatively uniform distribution of corrosion current density along the steel surface, the simulated domain of the concrete samples is reduced to the two-dimensional cross-section depicted in Fig. 5. On such prepared samples, various corrosion current densities were applied for a certain period. In this study, we restrict our attention to the tests with applied corrosion current density lower than 10 $\mu\text{A}/\text{cm}^2$, such that the assumption of neglected precipitation of Fe²⁺ is not violated. The three cases fulfilling this condition, henceforth referred to as tests 1–3, are characterised by the following values of corrosion current density i_a , the thickness of concrete cover c and sample curing times:

- (1) $i_a = 5 \mu\text{A}/\text{cm}^2$, $c = 20$ mm, 28-day cured
- (2) $i_a = 10 \mu\text{A}/\text{cm}^2$, $c = 20$ mm, 147-day cured
- (3) $i_a = 10 \mu\text{A}/\text{cm}^2$, $c = 40$ mm, 28-day cured

Relevant to the estimation of G_f and p_0 , Pedrosa and Andrade [89] reported that the used concrete mixture had a maximum aggregate size of 12 mm and a water to cement ratio of 0.55. To cause immediate corrosion of the steel rebar, a high content of chlorides in the form of CaCl₂ · 2H₂O was added to the mixture such that a 3% mass ratio of chlorides to cement was achieved. Under such a high chloride concentration, relatively uniform corrosion is expected.

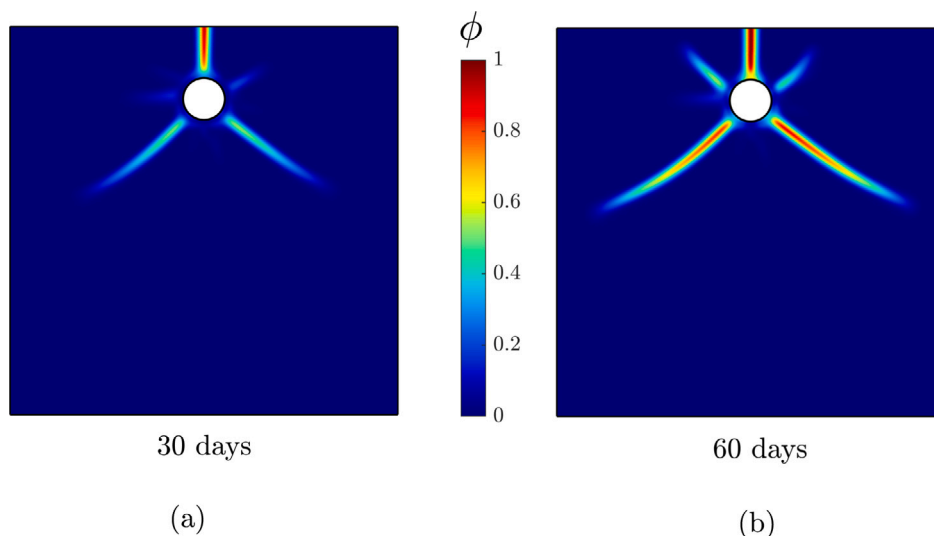


Fig. 6. Nucleation and growth of cracks as characterised by the contours of the phase field variable ϕ . Results obtained for the conditions of test 2 ($i_a = 10 \mu\text{A}/\text{cm}^2$ and $c = 20 \text{ mm}$) after (a) 30, and (b) 60 days.

The cast samples were separated into two batches, which were subjected to curing for different periods of time, specifically 28 and 147 days, resulting in different mechanical properties (see Table 1). The impressed current tests were carried out for 279 days for tests 1 and 3 and for 359 days for test 2. Here, the focus is on early-stage corrosion-induced cracking (assumed to last at least for the first 60 days), where the assumptions inherent to the model hold. Over this period, and for the corrosion current densities explored, the change in shape and size of the steel rebar can be neglected. Also, the samples were kept wet throughout the experiment. During the tests, the length of the crack opening at the upper concrete surface (w) was monitored. The crack width w was measured in test 2 using a digital calliper while in tests 1 and 3 three polyester wire strain gauges were placed on the upper face of the concrete samples. Since the crack is perpendicular to the upper concrete surface, the crack width is estimated in the model as an integral over the x-component of the inelastic strain tensor $\epsilon_d = \epsilon - \epsilon_e - \epsilon_*$ over the upper concrete surface Γ^{us} [97], such that

$$w = \int_{\Gamma^{us}} (\epsilon_d)_x d\Gamma = \int_{\Gamma^{us}} (1 - g(\phi))(\epsilon_x - (\epsilon_*)_x) d\Gamma \quad (53)$$

We proceed to present the finite element predictions. First, as shown in Fig. 6, the model captures a key qualitative element of the experiments: the nucleation and growth of a vertical crack that connects the steel rebar and the closest (upper) concrete surface, followed by the formation of lateral cracks nucleating in the vicinity of the steel surface. The reasons for the slight offset of cracks from the rebar is explained in Appendix D.

Second, quantitative predictions of crack width w versus time are given in Fig. 7. Numerical predictions show a good agreement with experimental measurements in tests 1 and 2 (Fig. 7a and b, respectively), despite the differences in current density and sample curing times. This agreement is notable because, as discussed in Section 3.1.4, crack width estimates are very sensitive to the current density, which comes into play via Eq. (19). In the case of test 3, the appropriate scaling (curve slope) is captured but quantitative agreement requires shifting the simulation result. This indicates that the model is able to accurately capture the growth of the main crack, once it has initiated, but that it fails in capturing the crack nucleation event for that particular experiment. This is not entirely surprising as the onset of crack growth in a heterogeneous material like concrete can be of stochastic nature. E.g., material heterogeneities such as aggregates could have triggered the nucleation of secondary cracks that relax the stress state and delay the formation of the measured crack.

It should be emphasised here that the predicted and experimentally measured crack widths have been compared only for the first 60 days. However, Pedrosa and Andrade [89] found out that in nearly all impressed current tests they performed, the rate of growth of surface crack width dropped significantly at a certain time after the initial stage of approximately linear evolution. For this reason, Pedrosa and Andrade [89] characterised the surface crack width evolution as a two-stage process. The computational results indicate that the pore space is not entirely filled with precipitates during the investigated period, suggesting the validity of the assumptions of the model in the investigated regime. Thus, we hypothesise that the early stage is encompassed in the first stage described by Pedrosa and Andrade [89], which is also strengthened by the good agreement between the experimental and predicted surface crack width. We also hypothesise that the change in the slope of the crack width in time is related to the filling of the local porosity by accumulated rust. It is possible that as iron ions can no longer escape into the porosity (with the exception of cracks), they accumulate in the layer in the corroded regions of the steel rebar. The change of the mechanism generating corrosion-induced pressure may result in the change of the slope of the crack width curve in time. An accurate prediction of the second phase described by Pedrosa and Andrade [89] will be an objective of future studies.

3.1.3. General aspects of the simulation results

Let us examine the evolution of key variables to understand cracking predictions and gain insight into the model. Since the evolution of the distribution of rust in the concrete pore space determines corrosion-induced cracking, its accurate description was one of the main objectives of the proposed formulation. For this purpose, the reactive transport and precipitation of dissolved iron species were explicitly modelled. It is known that precipitates can form millimetres from the steel surface [43], which reduces the precipitation-induced pressure and thus delays the cracking process. As shown in Figs. 8(a) and 8(b), for the representative case of test 2 ($c = 20 \text{ mm}$, $i_a = 10 \mu\text{A}/\text{cm}^2$), the proposed model is able to capture how precipitates spread over several mm away from the steel surface. Also, Fig. 8(b) shows how the precipitate content dramatically increases in the close vicinity of the rebar, where a highly porous steel-concrete interface is located and thus where significantly more rust can accumulate. This 'layer' of rust around the rebar is commonly observed in experimental studies [32, 98]. The evolution of the distributions of Fe^{2+} ions and Fe^{3+} ions are discussed in more detail in Appendix B.

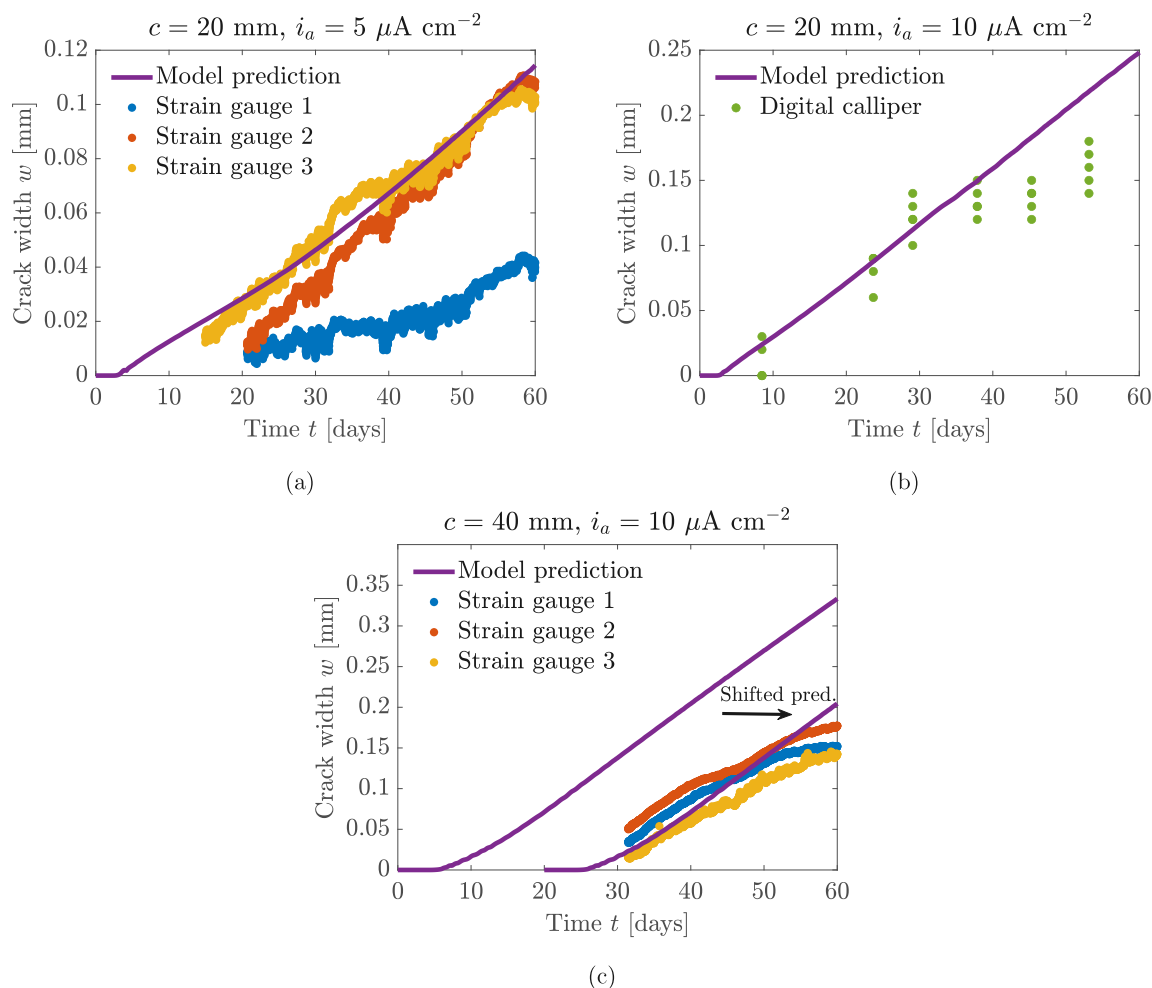


Fig. 7. Comparison of the evolution of simulated and experimentally-measured surface crack width for impressed current tests by Pedrosa and Andrade [89] – (a) test 1 ($i_a = 5 \mu\text{A/cm}^2$, $c = 20$ mm), (b) test 2 ($i_a = 10 \mu\text{A/cm}^2$, $c = 20$ mm), (c) test 3 ($i_a = 10 \mu\text{A/cm}^2$, $c = 40$ mm). A good agreement with experiments is attained but, for test 3, this requires shifting the prediction in time. Such a shift could be due to the role that aggregates play in initiating secondary cracks that delay the growth of the monitored crack.

Another objective of the proposed model was to simulate the volume expansion of rust compared to the original steel, going beyond the simplified concepts of rebar expansion and stress-free accumulation of precipitates in the concrete pore space. The abilities of the model in capturing the interplay between the growth of precipitates under confined conditions and corrosion-induced cracking are showcased in Figs. 7 and 8. Moreover, the results in Fig. 8 show that fracture proceeds even though the pores are still not entirely filled with precipitates, in contrast with the popular simplifying assumption of the existence of a region of stress-free accumulation of corrosion products around the steel rebar. In this regard, it has been argued that growing crystals in concrete can cause pressure before the pore space is completely filled, as the growing crystal exerts pressure on the pore walls [52].

A third physical phenomenon of particular interest is the preferential transport of dissolved iron species through cracks [98], instead of through the concrete pore space, and the associated local reduction of pressure. This was incorporated into the proposed model by employing a damage-dependent formulation of the diffusivity tensor (50). The ability of the model to capture the role of cracks on the precipitate saturation ratio S_p is shown in Fig. 8(c). The results show how in regions with a higher degree of damage (i.e., locally growing cracks), dissolved iron species are preferentially transported deeper into the cracks and precipitate there or further away in the concrete porosity rather than on the steel–concrete boundary. Thus, the precipitate saturation ratio at

the steel–concrete boundary is locally reduced in the vicinity of cracks and is highest in the regions with low damage.

3.1.4. Parametric studies

The validated model is subsequently used to explore the sensitivity of the results to changes in model parameters. The surface crack width w is evaluated for every parameter value at 5, 20, 40 and 60 days. Only the value of the parameter being investigated is varied and the remaining parameters are taken to be those relevant to test 2 ($i_a = 10 \mu\text{A/cm}^2$, $c = 20$ mm), a representative case study. An exception to this is the concrete's tensile strength f_t and fracture energy G_f , which depend on each other and on Young's modulus as per the Eurocode standards [90]. For the sake of brevity, only the results for the most relevant parameters are discussed in this section, and the reader is referred to Appendix C for the remainder. Specifically, crack width predictions as a function of time are here provided for varying values of the steel rebar diameter d , the concrete cover distance c , the concrete porosity p_0 , the corrosion current density i_a , and the precipitate mechanical properties (Young's modulus E_p and Poisson's ratio ν_p) - see Fig. 9. To facilitate interpretation, the crack width is displayed both in its absolute value w (in mm) and in its relative value \tilde{w} (in %). The relative crack width \tilde{w} is calculated as the ratio of the crack width w to 0.25 mm, which was the maximum crack width for test 2 ($i_a = 10 \mu\text{A/cm}^2$ and $c = 20$ mm) at 60 days.

Consider first the results obtained for a varying steel rebar size, Fig. 9(a). Increasing the rebar diameter d implies having a larger

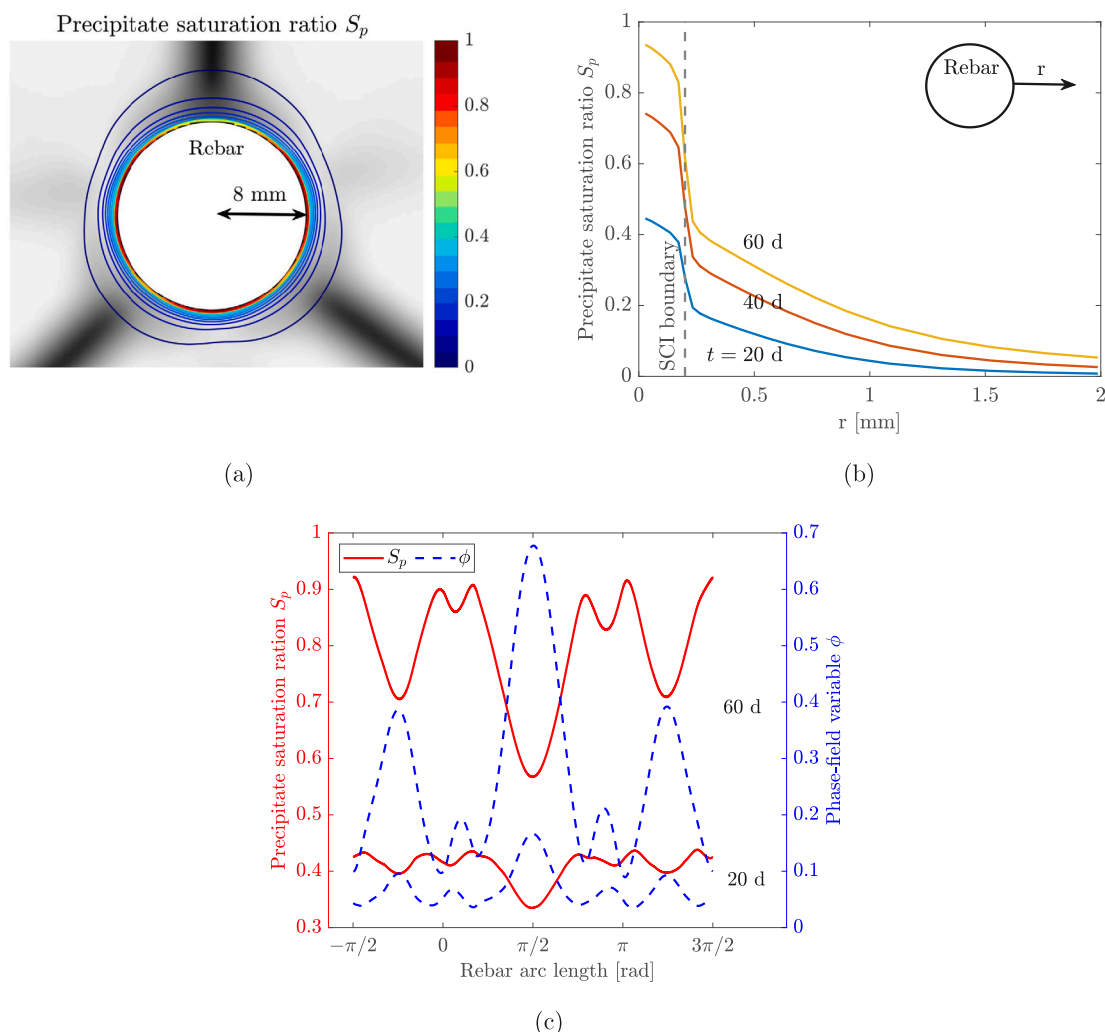


Fig. 8. Precipitate saturation ratio S_p for test 2 ($i_a = 10 \mu\text{A}/\text{cm}^2$, $c = 20 \text{ mm}$) – (a) contours of S_p in the vicinity of steel rebar at 60 days, with the phase-field variable ϕ shown in the back in a grey scale bar (0 – white, 1 – black); (b) evolution in time of S_p in a radial direction from the rebar ($r, \theta = 0^\circ$), S_p increases rapidly in the vicinity of SCI boundary, due to the significantly higher porosity and thus diffusivity of Fe^{2+} and Fe^{3+} in SCI; (c) comparison of the distribution of ϕ and S_p around the circumference of steel rebar at 20 and 60 days.

corroding surface and thus more released Fe^{2+} ions gradually turning into rust. Hence, as d increases, more precipitates distribute over a greater region, leading to a more profound expansive pressure and thus a greater crack width. The results relevant to a varying concrete cover depth c are given in Fig. 9(b). Initially, a larger concrete cover causes the crack to start growing later, as it can be seen in the 5 days curve. However, the predicted rate of surface crack width growth is higher for larger covers, as it can be seen from the simulation at 40 and 60 days. This result can be thought of as counter-intuitive, given that design codes recommend increasing the concrete cover depth to improve corrosion resistance. However, this is aimed at delaying the transport of aggressive chemical species such as chlorides or carbon dioxide, while in this set of experiments chlorides are present near the rebar from the beginning of the test. In the scenario considered here, the larger surface crack width obtained with a larger concrete cover is the result of mechanical (geometric) effects. This has also been reported in computational studies [39,99], and Alonso et al. [100] showed experimentally that for larger covers the cracking process is delayed but the rate of the crack width in time is not smaller.

The sensitivity of the surface crack width to the concrete porosity is shown in Fig. 9(c). Here, we vary the bulk porosity p_0 but leave the SCI porosity constant at 0.52. The results show how the crack width

rapidly decreases with increasing porosity. This is because precipitates occupy the pore space surrounding the rebar much quicker for low porosities, inducing large pressures at an earlier stage. The results show that the explicit modelling of the reactive transport and precipitation of iron species allows the profound impact of porosity on corrosion-induced cracking to be captured, without the need to employ the simplified concept of an artificial corrosion accommodation region. However, these predictions only reflect the impact of porosity on transport properties while in reality porosity would have an impact on the strength and fracture energy of concrete, potentially counterbalancing the effect described in Fig. 9(c). The extension of the model to capture such dependencies is straightforward, provided that the strength and fracture energy sensitivities to p_0 are known.

The impact of the corrosion current density on the surface crack width is given in Fig. 9(d). The results show very significant sensitivity to i_a within the range of applied currents evaluated (0.1 to $10 \mu\text{A}/\text{cm}^2$). This strong dependence is to be expected as it is commonly utilised in experimental accelerated corrosion studies to shorten testing times. The model captures this dependency by increasing the amount of Fe^{2+} ions that can be released from the steel surface with increasing applied current, which then results in a higher content of Fe^{3+} ions via oxidation and subsequent precipitation.

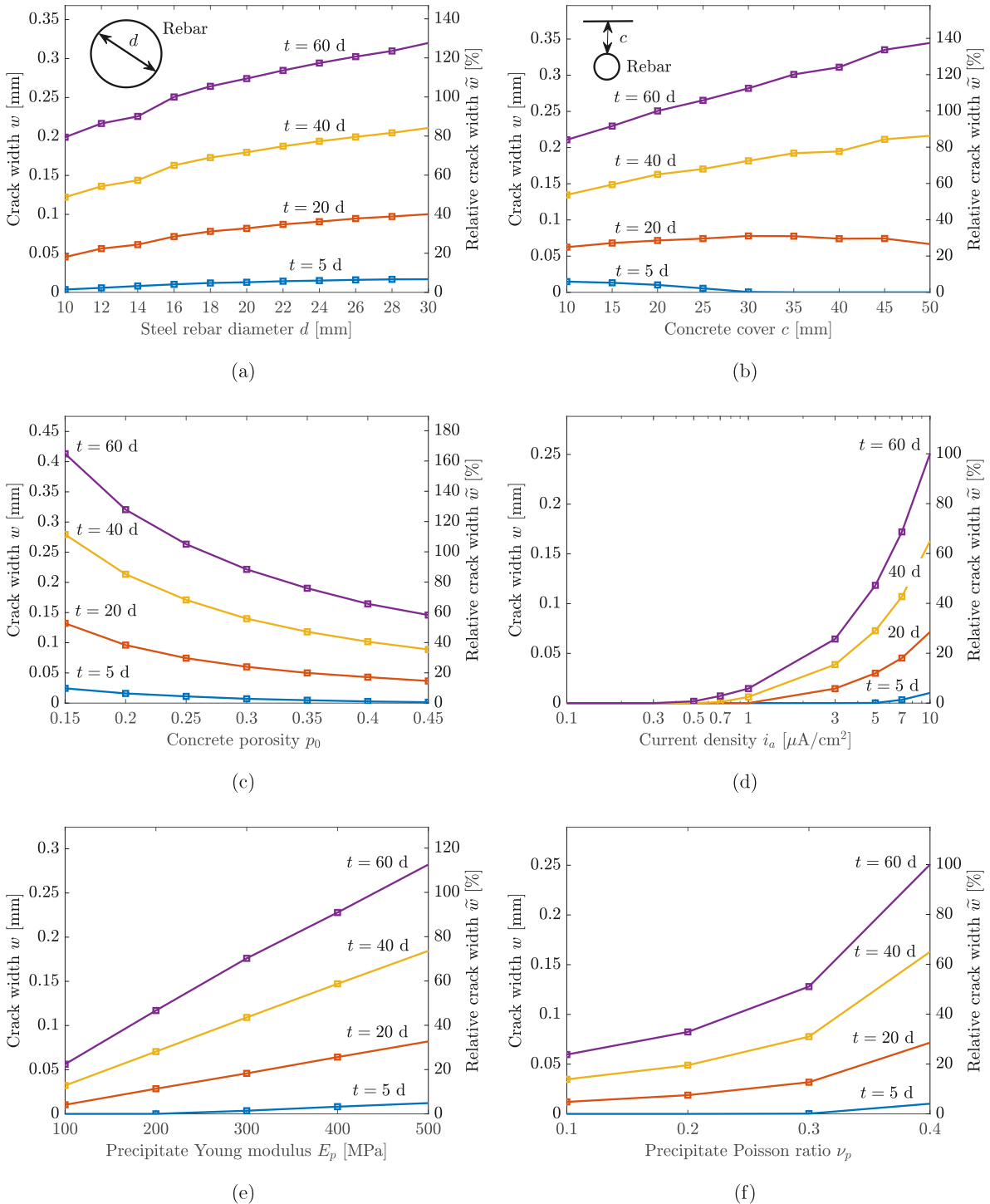


Fig. 9. Parametric study: absolute and relative crack width after 5, 20, 40 and 60 days for varying (a) bar diameter d , (b) concrete cover c , (c) concrete porosity p_0 , (d) corrosion current density i_a (with the x-axis in log scale), (e) Young modulus of rust E_p , and (f) Poisson's ratio of rust ν_p .

Finally, Figs. 9(e) and 9(f) show, respectively, the crack width sensitivity to the Young's modulus E_p and Poisson's ratio ν_p of rust. The results show significant sensitivity to these two parameters, whose values carry a relatively high degree of uncertainty [92]. Thus, these results highlight the need for careful characterisation studies of rust behaviour to enable mechanistic modelling of corrosion-induced cracking.

3.2. Simulation of spalling and delamination as a function of the reinforcement configuration

We subsequently exploit the abilities of the model in capturing complex cracking phenomena to gain insight into the role of the reinforcement configuration and rebar interactions. As shown in Fig. 10,

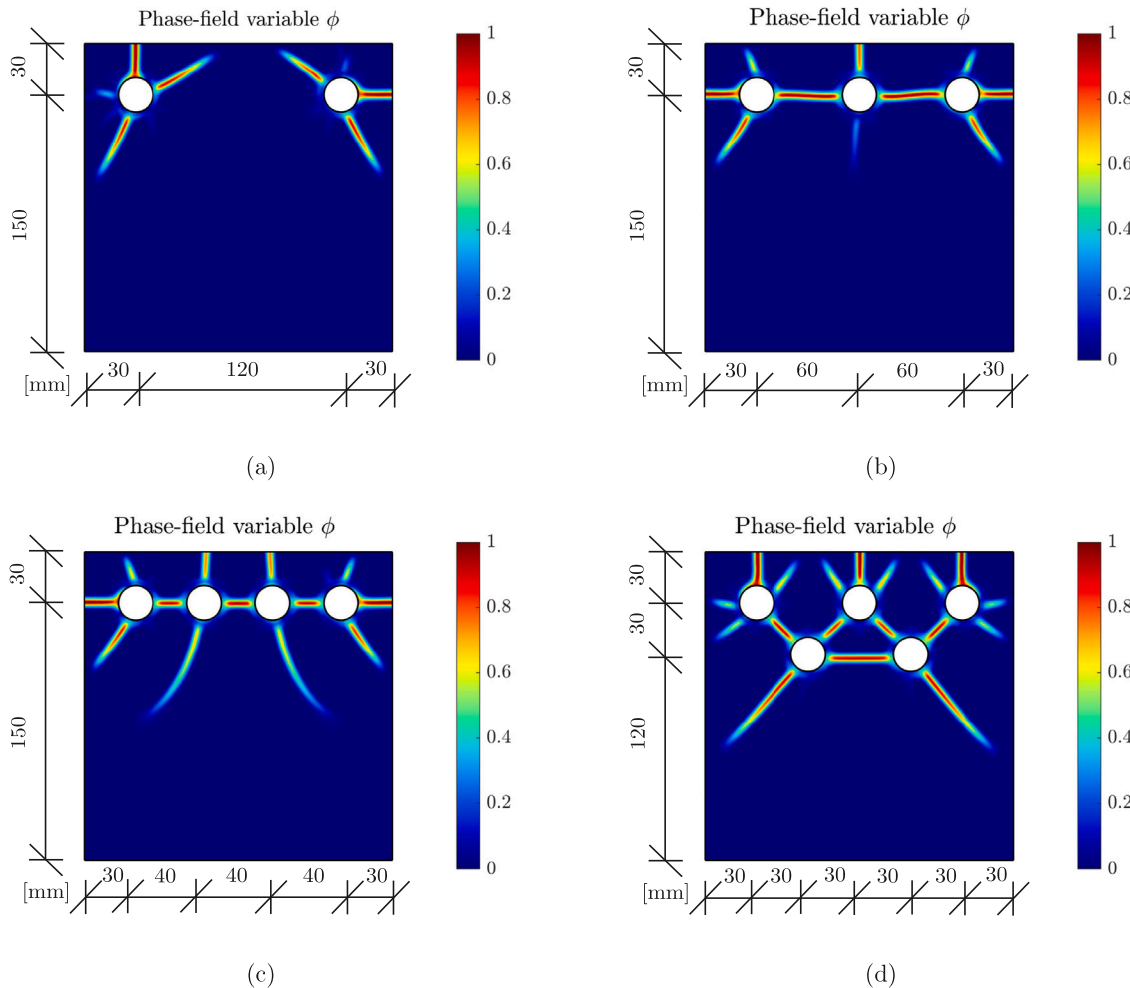


Fig. 10. Phase-field variable ϕ contours after 60 days for (a) 2 embedded rebars in one row, (b) 3 embedded rebars in one row, (c) 4 embedded rebars in one row, and (d) 5 embedded rebars in two rows. In all cases, $i_a = 10 \mu\text{A}/\text{cm}^2$ and $d = 20 \text{ mm}$.

simulations are conducted for a $180 \times 180 \text{ mm}$ concrete sample reinforced with a varying number of rebars: two (Fig. 10(a)), three (Fig. 10(b)), four (Fig. 10(c)) and five (Fig. 10(d)). The rebar diameter is 20 mm and in all but the five-rebar case the rebars are located at the same distance from the outer surface. In the case study involving five rebars, the configuration involves two rows of rebars, with the upper one having three. The model parameters employed correspond to those used in the previous section to validate the conditions of test 2. All rebars are corroding uniformly and the corrosion current density is $i_a = 10 \mu\text{A}/\text{cm}^2$.

The simulation results showcase the ability of the model to predict spalling and delamination events. Cracks typically originate between the rebars, and between the rebars and the closest free surface, highlighting their interaction. These interactions are governed by the rebar spacing. If the spacing is large relative to the concrete cover depth, spalling patterns are observed in the corners of the concrete sample (Fig. 10(a)). However, if the rebars are spaced more closely, lateral cracks interact and form a delamination pattern (Figs. 10(b) and 10(c)). This behaviour is typically observed in reinforced concrete structures [92]. In the two-rebar case (Fig. 10(a)), non-symmetric behaviour can be observed, with a vertical crack being the most developed in the left rebar and a horizontal crack being dominant in the right rebar. This is not surprising since both rebars are equally distant from the vertical and horizontal concrete surfaces and thus small numerical differences can decide which crack will prevail. In practice, material

heterogeneities will decide the competition between two equally probable cracking scenarios. Increasing the number of rebars increases the number of cracks, in agreement with expectations. Adding a new row of rebars (Fig. 10(d)) results in additional crack interactions, with a zigzag cracking pattern between rebar rows emerging as a result of the tendency of cracks to follow the shortest path between rebars. In addition, the comparison with Fig. 10(b) reveals that these 45° -angle cracks dominate over the horizontal cracks that connect rebars in the absence of a second row that is sufficiently close.

3.3. Corrosion-induced cracking of a 3D bent rebar

Finally, a three-dimensional case study is addressed to showcase the ability of the computational framework presented to predict corrosion-induced cracking in complex geometries and over technologically-relevant length scales. The boundary value problem under consideration is a $30 \times 30 \times 30 \text{ mm}$ concrete cube reinforced with a bent rebar of 5 mm radius — see Fig. 11. The displacement is constrained in the vertical direction at the bottom surface (i.e., in the direction normal to the plane). Also, rigid body motion is prevented by prescribing the displacement in all directions at one of the corners of the cube. Regarding the transport boundary conditions, zero flux is assumed at the free surfaces except for the application of an inward flux for the concentration of Fe^{2+} ions, as given by Faraday's law (19). We also utilise this case study to investigate the role of assigning a random

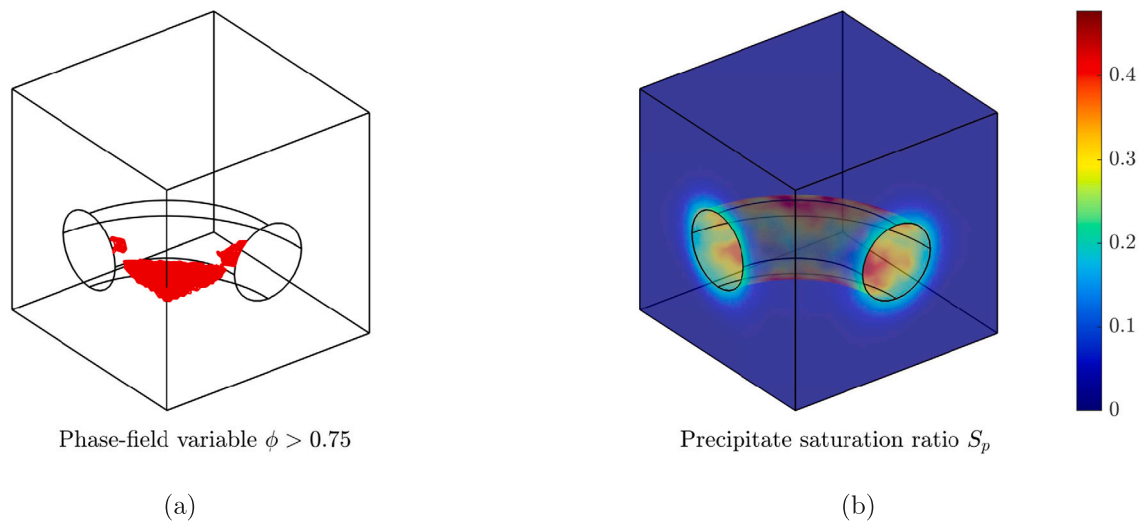


Fig. 11. Contours after 50 days of (a) evolving cracks, as characterised by contours of the phase-field variable above 0.75 ($\phi > 0.75$), and (b) precipitate saturation ratio S_p for a $30 \times 30 \times 30$ mm concrete cube reinforced with a bent rebar. Here, i_a , f_i and G_f have been randomised following a continuous uniform probability distribution.

variation to relevant parameters, so as to mimic the heterogeneous conditions expected in realistic scenarios. Thus, the corrosion current density i_a acting on the steel surface is varied between 1 and $9 \mu\text{A}/\text{cm}^2$ using a continuous uniform probability distribution. In addition, the tensile strength and fracture energy of concrete are also randomised by employing a continuous uniform probability distribution such that the maximum difference from the values given in Table 1 is 2.5%. Otherwise, the model parameters resemble those of test 2 in the validation study (see Sections 3.1.1 and 3.1.2).

The results obtained are shown in Fig. 11 in terms of the cracking patterns, as characterised by the domains where the phase field exceeds 0.75 (Fig. 11(a)), and contours of the precipitate saturation ratio S_p (Fig. 11(b)). It can be observed that the randomisation of the corrosion current density results in a non-uniform distribution of the precipitate saturation ratio S_p but that the cracking behaviour shows a relatively symmetric pattern. Two sharp cracks form at the rebar edges closest to the free surface and grow perpendicularly to the vertical edges of the concrete cube. Then, damage expands and the cracked region eventually fills the space between the corner and the rebar, with some cracks appearing at other locations within the surface of the rebar. Thus, the cracking pattern is relatively insensitive to the randomisation of properties considered and is driven by geometrical effects.

4. Conclusions

We have presented a new phase-field-based chemo-mechanical model capable of predicting corrosion-induced cracking of reinforced concrete under natural-like corrosion current densities. The theoretical framework is built upon three coupled attributes: (i) a model for the reactive transport and precipitation of Fe^{2+} and Fe^{3+} ions, (ii) an eigenstrain-based model to capture the pressure buildup resulting from the accumulation of precipitates under confined conditions in the concrete pore space, and (iii) a quasi-brittle phase-field description of fracture that accounts for the enhanced transport of relevant species through the crack network. The combination of these elements brings, for the first time, an understanding and modelling framework for corrosion-induced cracking driven by the growth of precipitates (rust) under confined conditions. This enables overcoming the limitations of expansion layer descriptions, which implicitly assumes the growth of incompressible precipitates from the steel surface, and the assumption of a stress-free accumulation of precipitates in the concrete pore space. Contrarily to this simplified approach, the proposed model:

- Resolves the evolution of the distribution of compressible precipitates in the concrete pore space in time. Thus, the model naturally captures the delaying effects of concrete porosity surrounding rebar and cracks on corrosion-induced cracking without necessity to consider an artificial corrosion accommodation region (CAR) around the rebar which size and capacity is very hard to estimate. Even if the corrosion accommodation region (CAR) would be accurately considered, it neglects the pressure of gradually forming rust in concrete porosity which is considered by the proposed model.
- Takes into consideration the compressibility and elastic properties of the rust which were found to importantly affect the corrosion-induced crack width.
- Allows to investigate the impact of varying current density on the composition of rust which is the objective of an ongoing research effort.

The resulting model consists of five differential equations and associated field quantities, which are solved by using the finite element method. The computational model is validated against the impressed current tests by Pedrosa and Andrade [89], showing a good agreement between the predicted and the experimentally measured crack widths during the early propagation stage, and subsequently used to gain insight into the role of relevant parameters and their interactions in 2D and 3D boundary value problems involving different rebar configurations, geometries and environmental conditions. The following key physical phenomena are captured: (i) the transport of Fe^{2+} and Fe^{3+} through the concrete matrix, (ii) the oxidation of Fe^{2+} to Fe^{3+} , (iii) the precipitation of Fe^{2+} and Fe^{3+} in the concrete pore space, (iv) the clogging of the pore system by precipitates (rust), (v) the pressure resulting from the accumulation of precipitates (rust) under confined conditions in the concrete pore space, (vi) the progressive damage and fracture of the concrete matrix due to a precipitation pressure, and (vii) the enhanced transport of relevant chemical species through cracks. In addition, the results reveal the following main findings:

- The model can accurately capture the evolution of surface crack width for different concrete cover depths and applied currents but the heterogeneous nature of concrete must be accounted for to accurately predict the onset of crack growth.
- Precipitates are found to be largely near the rebar but also spread up to millimetres away from the steel surface, reducing the precipitation-induced pressure and delaying cracking.

- Fracture proceeds due to pressure induced by precipitate growth and this can happen with a partial saturation of the concrete pore space.
- In regions with locally growing cracks, dissolved iron species are preferentially transported deeper into the cracks and precipitate there or in areas away from the steel rebar.
- Surface crack width increases with rebar diameter (due to a larger precipitate distribution), concrete cover (due to geometrical effects) and current density (due to a higher release of Fe^{2+} ions).
- Predictions appear to be sensitive to the mechanical properties of rust, highlighting the need for appropriate characterisation studies
- Spalling and delamination events are predicted when multiple rebars are considered, showing that the rebar spacing plays a dominant role.
- While the nucleation of cracks is governed by local material heterogeneities, the final crack patterns are relatively insensitive to these as they are dominated by geometrical effects.

Potential avenues for future work include the extension of the model to encompass non-uniform chloride-induced corrosion, carbonation-induced corrosion, and late-stage corrosion-induced cracking.

CRedit authorship contribution statement

Evžen Korec: Conceptualization, Methodology, Software, Validation, Formal analysis, Investigation, Data curation, Writing – original draft, Visualization. **Milan Jirásek:** Conceptualization, Methodology, Writing – review & editing, Supervision. **Hong S. Wong:** Conceptualization, Writing – review & editing, Supervision. **Emilio Martínez-Pañeda:** Conceptualization, Methodology, Software, Resources, Writing – review & editing, Supervision, Funding acquisition.

Declaration of competing interest

The authors declare no conflict of interest.

Data availability

Data will be made available on request.

Acknowledgements

The authors gratefully acknowledge stimulating discussions with Prof Nick Buenfeld and Tanmay Ubgade (Imperial College London), and Prof Milan Kouril (University of Chemistry and Technology, Prague). E. Korec acknowledges financial support from the Imperial College President's PhD Scholarships. M. Jirásek acknowledges the support of the European Regional Development Fund (Center of Advanced Applied Sciences, project CZ.02.1.01/0.0/0.0/16_19/0000778). E. Martínez-Pañeda was supported by an UKRI Future Leaders Fellowship [grant MR/V024124/1]. We additionally acknowledge computational resources and support provided by the Imperial College Research Computing Service (<http://doi.org/10.14469/hpc/2232>).

Appendix A. On the ability of various phase-field fracture models in reproducing quasi-brittle behaviour

In the past year, studies have been conducted involving the application of phase field models to corrosion-induced cracking in concrete [9, 20,101]. However, these studies employ phase-field fracture models originally designed for brittle fracture. To capture the quasi-brittle behaviour of concrete, we build our formulation upon the so-called phase-field cohesive zone model (PF-CZM) by Wu and co-workers [72,

73]. The differences between the three widely used phase-field models are highlighted in Fig. A.1. Specifically, the mechanical response of a two-dimensional bar is investigated by means of the PF-CZM model [72,73], the conventional or so-called AT2 model Bourdin et al. [65], and the stress-based phase field model by Miehe et al. [102,103]. The values of Young's modulus E_c , Poisson's ratio ν_c , tensile strength f_t and fracture energy G_f are the same as for the 147 days cured concrete samples (see Table 1).

The PF-CZM model by Wu [72,73] allows us to directly set both tensile strength and fracture energy as model parameters. The stress-based model of Miehe et al. [102] takes only tensile strength into consideration. The input to the AT2 model [65] is the fracture energy G_f but the tensile strength can be set implicitly through the value of characteristic length ℓ , following the relation:

$$f_t = \frac{9}{16} \sqrt{\frac{E_c G_f}{3\ell}} \quad (54)$$

In order to trigger a localised fracture, the tensile strength in an 8 mm long section in the middle of the sample is reduced to $f_{t,min} = 0.98f_t$ for the PF-CZM and stress-based models. In the AT2 case, the fracture energy in the same section of the sample is reduced to 98% of its value. The phase-field characteristic length is chosen to be $\ell = 3$ mm for the PF-CZM and stress-based models while $\ell = 72.4$ mm for the AT2 model to obtain the desired tensile strength when using (54). Lastly, the stress-based model by Miehe et al. [102] contains the dimensionless parameter $\xi > 0$ which affects the post peak slope of the local stress-strain diagram. We assume $\xi = 1$ but calculations conducted with other values do not appear to influence the results in this boundary value problem. The resulting stress-strain responses are shown in Fig. A.1(b). Both the stress-based model by Miehe et al. [102] and the AT2 model by Bourdin et al. [65] predict a sudden drop in the load carrying capacity, indicative of brittle failure. Also, in the AT2 case, damage starts to grow immediately after loading the sample and this leads to a concave stress-strain prior to sudden failure. In contrast, the PF-CZM model by Wu [72,73] predicts a long convex post-peak softening regime characteristic of quasi-brittle materials such as concrete.

Appendix B. Evolution of the Fe^{2+} and Fe^{3+} concentrations

The distribution of Fe^{2+} and Fe^{3+} concentrations is respectively shown in Figs. B.1 and B.2, for the conditions relevant to the validation test 2 (see Section 3.1). The results show that the concentration of Fe^{2+} is at least one order of magnitude smaller than that of Fe^{3+} . This is because the concentration of Fe^{2+} is continuously diluted by diffusion and fast oxidation to Fe^{3+} . Hence, the assumption of negligible precipitation of Fe^{2+} under low, natural-like current densities appears to be sensible. Also, the results show that both concentrations decrease in time, with a particularly noticeable minima in the region with the highest damage, as a result of the damage-enhancement of local diffusivity (the distribution of phase-field variable around the circumference of steel rebar in time is depicted in Fig. 8(c)).

Appendix C. Additional parametric studies

Complementing the parametric study discussed in Section 3.1.4, we proceed here to assess the sensitivity of surface crack width w predictions to the remaining parameters of the model. Specifically, as shown in Figs. C.1 and C.2, results are obtained as a function of the concrete tensile strength f_t (Fig. C.1(a)), the concrete fracture energy G_f (Fig. C.1(b)), the initial (undamaged) concrete diffusivity $\theta_l D_{m,\alpha}$ (Fig. C.1(c)), the rate constant $k_r^{I \rightarrow III}$ (Fig. C.1(d)), the oxygen concentration c_{ox} (Fig. C.1(e)), the steel-concrete interface thickness d_{SCI} (Fig. C.1(f)) and the rate constant $k_r^{III \rightarrow p}$ (Fig. C.2).

Consider first the role of the tensile strength f_t (Fig. C.1(a)) and fracture energy G_f (Fig. C.1(b)) of concrete. For this set of results,

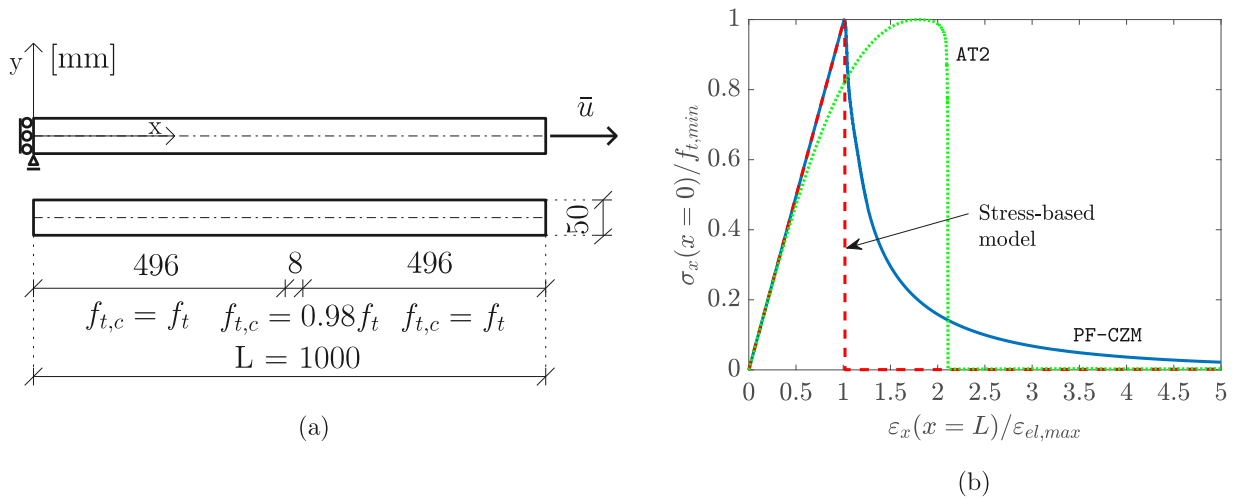


Fig. A.1. Elongated concrete bar benchmark – (a) geometry (in mm), strength distribution and the boundary conditions, (b) comparison of stress–strain curves obtained with the conventional (AT2) phase field model [65], the stress-based model by Miehe et al. [102], and the quasi-brittle PF-CZM model [72,73]. The stress $\sigma_x(0)$ is normalised with $f_{t,min}$ (the tensile strength of the sample in the weakened middle section), and the strain $\epsilon_x(L)$ is normalised with $\epsilon_{el,max} = f_{t,min}/E_c$ (the maximum value of the x -component of the elastic strain.)

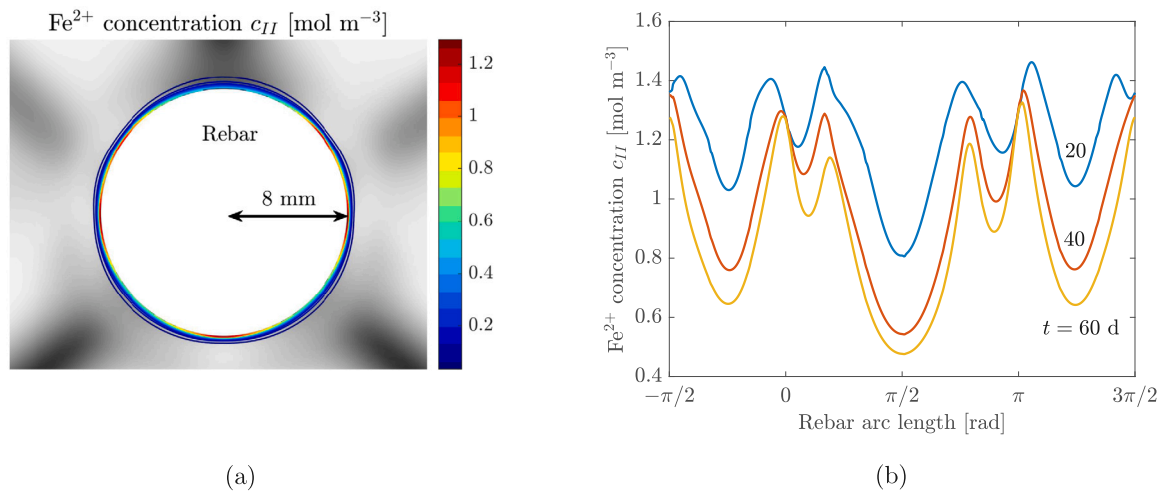


Fig. B.1. Fe^{2+} concentration c_{II} for test 2 ($i_a = 10 \mu A/cm^2$, $c = 20$ mm) – (a) contours of c_{II} in the vicinity of steel rebar at 60 days, phase-field variable ϕ in the shades of grey (0 – white, 1 – black), and (b) evolution of c_{II} around the circumference of steel rebar.

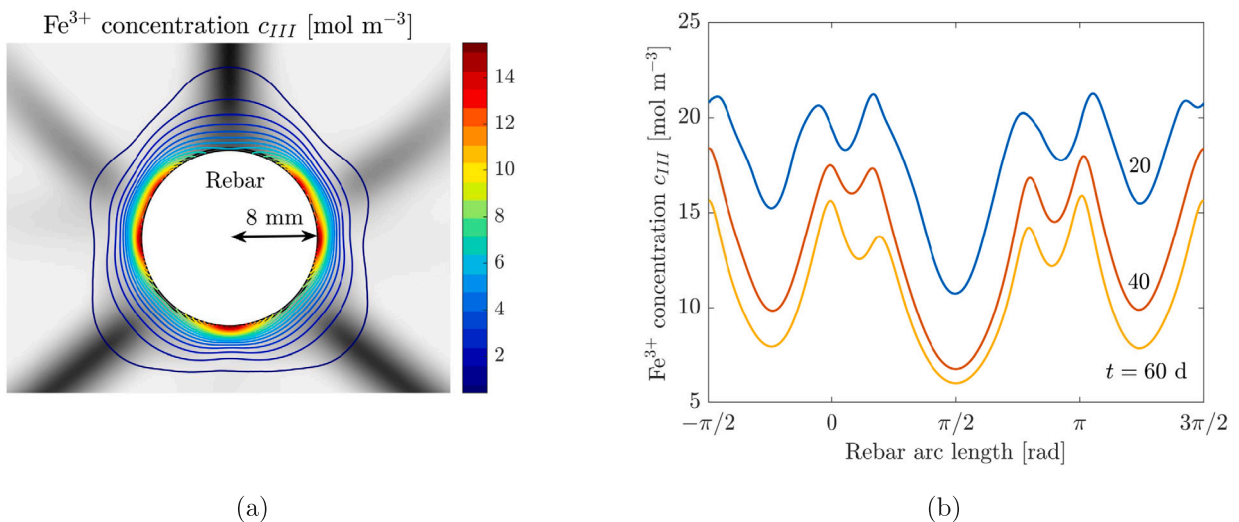


Fig. B.2. Fe^{3+} concentration c_{III} for test 2 ($i_a = 10 \mu A/cm^2$, $c = 20$ mm) – (a) contours of Fe^{3+} in the vicinity of steel rebar at 60 days, phase-field variable ϕ in the shades of grey (0 – white, 1 – black), and (b) evolution of c_{III} around the circumference of steel rebar.

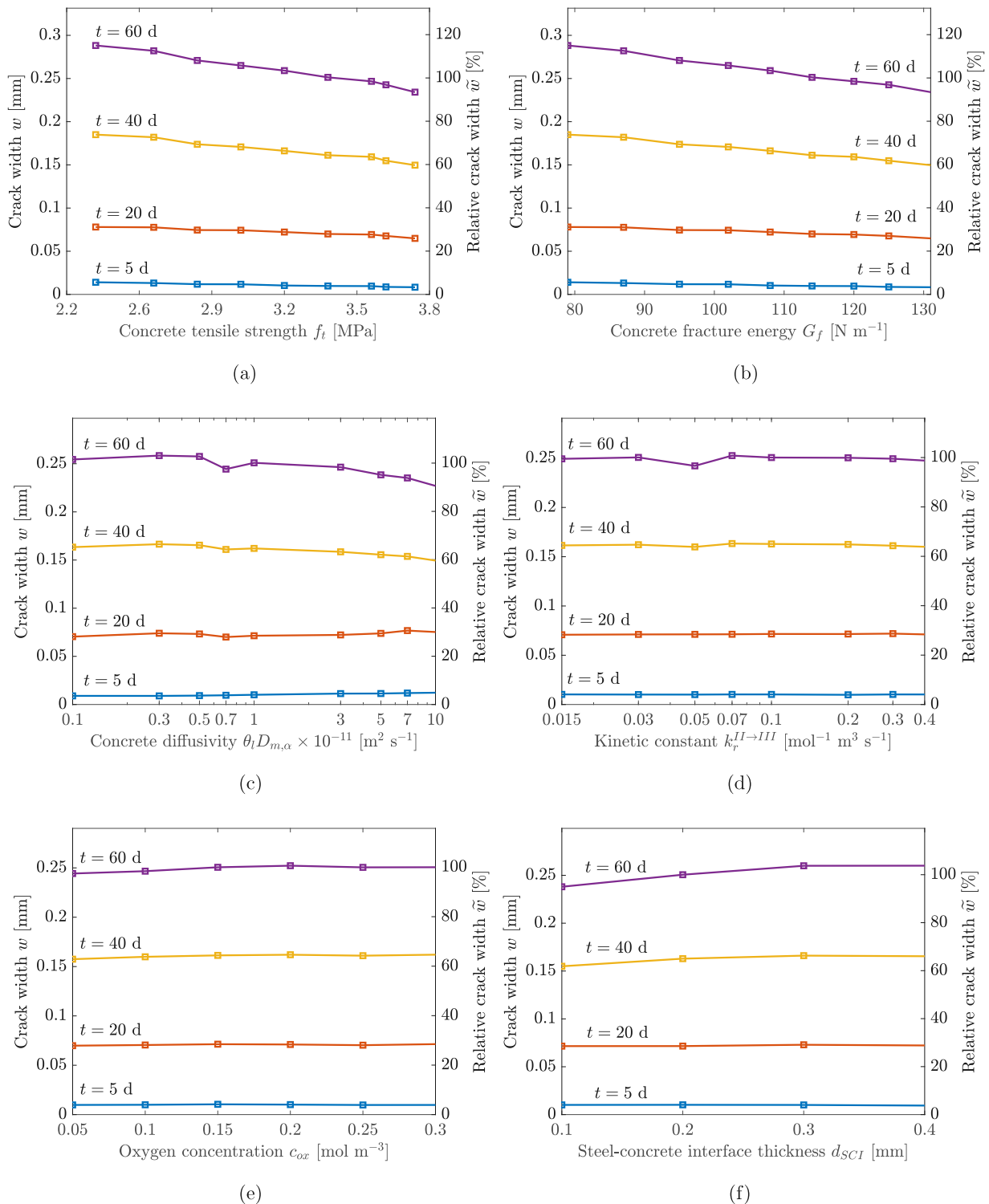


Fig. C.1. Parametric study: predicted absolute and relative crack width after 5, 20, 40 and 60 days for (a) varying tensile strength f_t , (b) fracture energy G_f , (c) initial (undamaged) concrete diffusivity $\theta_l D_{m,\alpha} = (1 - p_0) D_{m,\alpha}$ (with the x-axis in log scale), (d) rate constant $k_r^{II \rightarrow III}$ (with the x-axis in log scale), (e) oxygen concentration c_{ox} , and (f) steel-concrete interface thickness d_{SCI} .

the chosen values of Young’s modulus, fracture energy and tensile strength are correlated. The estimated values of Young’s modulus have been adopted from Eurocode 2 [90] and the fracture energy has been estimated with the formula of Bažant and Becq-Giraudon [91], assuming crushed aggregates. The results show that, in agreement with expectations, the crack width decreases with increasing f_t and G_f . Now consider the role of the initial (undamaged) concrete diffusivity

$\theta_l D_{m,\alpha} = (1 - p_0) D_{m,\alpha}$, Fig. C.1(c). The crack width is seen to decrease with increasing diffusivity values, as dissolved iron species can more easily escape from the steel surface for higher diffusivities, precipitating deeper into the concrete space and reducing damage. The relatively slow decrease of the crack width with growing diffusivity could be possibly attributed to the large contribution of damaged diffusivity (see equation (50)) in the vicinity of steel surface, diminishing the role of

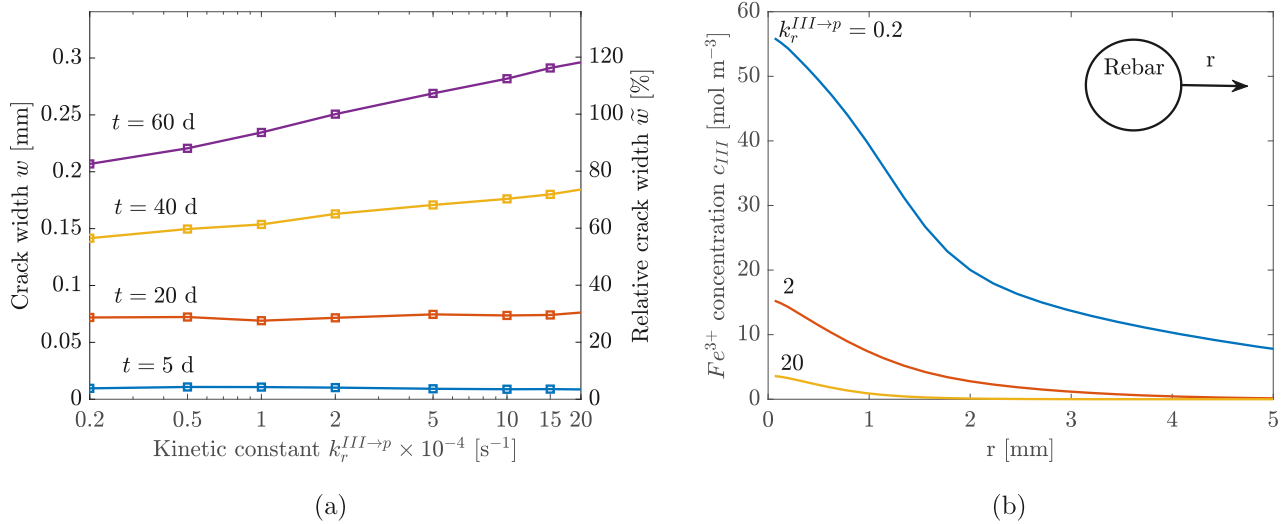


Fig. C.2. Influence of the rate constant $k_r^{III \rightarrow p}$: (a) absolute and relative crack width at 5, 20, 40 and 60 days for varying $k_r^{III \rightarrow p}$ ($k_r^{III \rightarrow p}$ is in log scale), and (b) Fe^{3+} concentration c_{III} for varying $k_r^{III \rightarrow p}$ in the vicinity of steel rebar at 60 days.

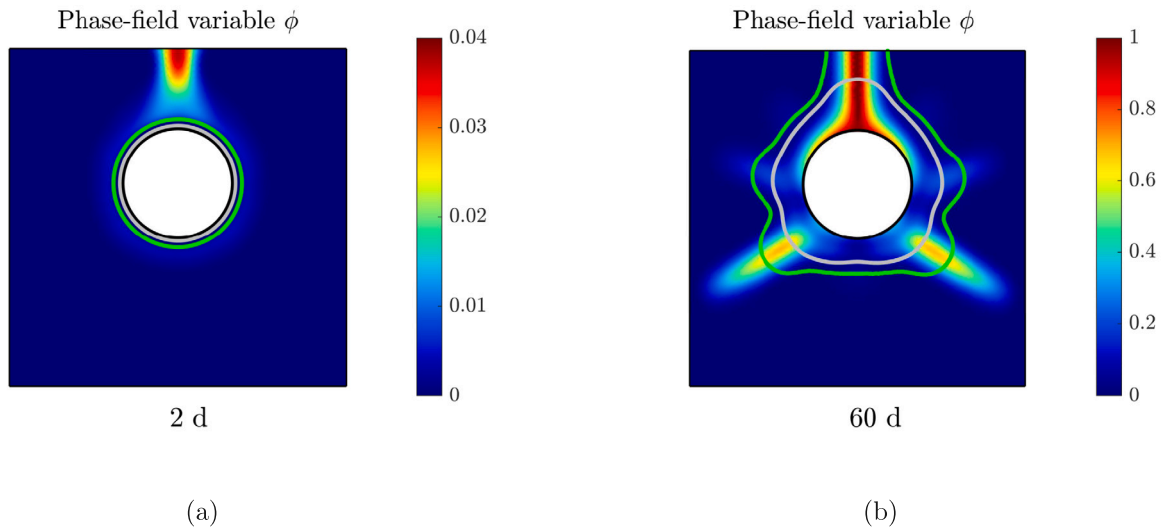


Fig. D.1. Distribution of phase-field variable ϕ at (a) 2 days (b) 60 days. Isolines of precipitate saturation ratio in grey ($S_p = 0.01$) and green ($S_p = 0.001$), $i_a = 10 \mu A/cm^2$, $c = 12$ mm.

the original undamaged diffusivity. The influence of the rate constant $k_r^{II \rightarrow III}$ is given in Fig. C.1(d). The surface crack width appears to be largely insensitive to this parameter when varied along the range of values reported in the literature, which span two orders of magnitude [43,95]. Even though a lower $k_r^{II \rightarrow III}$ leads to a slower oxidation reaction and thus to a higher concentration of Fe^{2+} , the resulting reaction rate in all tested cases is so quick that the final concentration of Fe^{3+} is nearly not affected. These results suggest that even though the value of $k_r^{II \rightarrow III}$ is relatively uncertain, the resulting error in terms of crack width is negligible. The oxygen concentration c_{ox} (Fig. C.1(e)) also shows little influence on surface crack width predictions, unless oxygen is nearly entirely depleted and the reaction stops. The final concentration of Fe^{2+} is higher for smaller oxygen concentrations because the transformation to Fe^{3+} proceeds more slowly. However, the resulting reaction rate is still so quick that the final concentration of Fe^{3+} (and thus the distribution of precipitates) is nearly not affected. Next, Fig. C.1(f) shows the sensitivity of the crack width to the steel-concrete interface thickness d_{SCI} , which is found to be small. The difference between crack width predicted for $d_{SCI} = 0.1$ mm and $d_{SCI} =$

0.4 mm is approximately 9% in terms of relative crack width. Thus, even though there is some uncertainty associated with the choice of d_{SCI} , the associated error appears to be small. Similarly to the parametric study of the influence of the initial (undamaged) diffusivity, this result is possibly influenced by the large contribution of damaged part of the diffusivity tensor (50).

The influence of the rate constant $k_r^{III \rightarrow p}$ is explored separately in Fig. C.2. Its value is varied over two orders of magnitude from $2 \cdot 10^{-5}$ to $2 \cdot 10^{-3}$, and this leads to a 35% difference in relative crack width. As shown in Fig. C.2(b), with growing $k_r^{III \rightarrow p}$, Fe^{3+} precipitates more quickly, accumulating rust and increasing damage. Hence, our analysis suggests that this rate constant plays a non-negligible role and thus should be carefully characterised.

Appendix D. Evolution of the distribution of cracks

In order to better understand the evolution of cracking during the performed numerical simulations, let us compare the distribution of phase-field variable ϕ at 2 days (Fig. D.1(a)) and 60 days (Fig. D.1(b)) of 50 by 50 mm concrete sample with the rebar of 16 mm diameter

which centre is shifted by 5 mm horizontally towards the upper concrete surface from the centre of the square. The material parameters are chosen the same as for 28 day cured samples in Table 1. Corrosion current density is $i_a = 10 \mu\text{A}/\text{cm}^2$. In Fig. D.1(a) we can see there is an initial damaged layer around the rebar which is slightly offset from the steel surface. This is related to the spatial distribution of precipitates in the pore space, as can be observed on the isolines of precipitate saturation ratio $S_p = 0.01$ (grey) and $S_p = 0.001$ (green). The first crack starts to nucleate vertically from the surface of the sample at the shortest distance between the concrete surface and the surface of the rebar. In Fig. D.1(b), we can see that at 60 days, the vertical crack is fully developed and several lateral cracks start to nucleate. The more rapidly developing lower lateral cracks are slightly offset from the steel surface which is again corresponding to the spatial distribution of precipitates. The computational reason for the connection between the offset of damage from the steel surface and the distribution of precipitates is that corrosion-induced pressure of the rust accumulating under confined conditions in concrete porosity is simulated as a precipitation eigenstrain. Expanding precipitates accumulate in a thin concrete region adjacent to the steel rebar causing tensile first principle effective stress further in the concrete which eventually leads to crack nucleation. However, the thin rust-filled region itself is locked between steel and remaining concrete causing the first effective principal stress there to be initially negative which prevents the local damage onset. Thus, only further in the concrete, where the first principle effective stress is positive, cracks can initiate. More experimental data are needed to clarify whether the described damage offset effect is accurate or whether it is artificially caused by the eigenstrain-based simulation technique.

References

- [1] C. Gehlen, C. Andrade, M. Bartholomew, J. Cairns, J. Gulikers, F. Javier Leon, S. Matthews, P. McKenna, K. Osterminski, A. Paeglitis, D. Straub, *Fib Bulletin 59 - Condition Control and Assessment of Reinforced Concrete Structures Exposed to Corrosive Environments (Carbonation/chlorides)*, fib - The International Federation for Structural Concrete, 2011.
- [2] A.E.K. Jones, B.K. Marsh, *Development of an Holistic Approach to Ensure the Durability of New Concrete Construction*, British Cement Association (BCA), 1997, p. 81.
- [3] G.H. Koch, M.P.H. Brongers, N.G. Thompson, Y.P. Virmani, J.H. Payer, *Corrosion Cost and Preventive Strategies in the United States*, Technical Report, Turner-Fairbank Highway Research Center, 2002, p. 81.
- [4] R.B. Polder, W.H. Peelen, W.M. Courage, *Non-traditional assessment and maintenance methods for aging concrete structures - Technical and non-technical issues*, *Mater. Corros.* 63 (12) (2012) 1147–1153.
- [5] A. Jamali, U.M. Angst, B. Adey, B. Elsener, *Modeling of corrosion-induced concrete cover cracking: A critical analysis*, *Constr. Build. Mater.* 42 (2013) 225–237.
- [6] Y. Zhao, A.R. Karimi, H.S. Wong, B. Hu, N.R. Buenfeld, W. Jin, *Comparison of uniform and non-uniform corrosion induced damage in reinforced concrete based on a Gaussian description of the corrosion layer*, *Corros. Sci.* 53 (9) (2011) 2803–2814.
- [7] X. Xi, S. Yang, C.Q. Li, *A non-uniform corrosion model and meso-scale fracture modelling of concrete*, *Cem. Concr. Res.* 108 (April) (2018) 87–102.
- [8] J. Zhao, Z. Chen, J. Mehrmashhadi, F. Bobaru, *A stochastic multiscale peridynamic model for corrosion-induced fracture in reinforced concrete*, *Eng. Fract. Mech.* 229 (January) (2020) 106969.
- [9] X. Hu, H. Xu, X. Xi, P. Zhang, S. Yang, *Meso-scale phase field modelling of reinforced concrete structures subjected to corrosion of multiple reinforcements*, *Constr. Build. Mater.* 321 (January) (2022) 126376.
- [10] B. Wu, Y. Yang, L. Zhang, Y. Wang, H. Li, *Meso-scale numerical study on the non-uniform corrosion-induced cracking of confined concrete*, *Constr. Build. Mater.* 260 (2020) 120463.
- [11] L. Jin, M. Liu, R. Zhang, X. Du, *Cracking of cover concrete due to non-uniform corrosion of corner rebar: A 3D meso-scale study*, *Constr. Build. Mater.* 245 (2020) 118449.
- [12] F.J. Molina, C. Alonso, C. Andrade, *Cover cracking as a function of rebar corrosion: Part 2 - Numerical model*, *Mater. Struct.* 26 (9) (1993) 532–548.
- [13] C. Fahy, S.J. Wheeler, D. Gallipoli, P. Grassl, *Corrosion induced cracking modelled by a coupled transport-structural approach*, *Cem. Concr. Res.* 94 (2017) 24–35.
- [14] I. Aldellaa, P. Havlásek, M. Jirásek, P. Grassl, *Effect of creep on corrosion-induced cracking*, *Eng. Fract. Mech.* 264 (2022) 108310.
- [15] P. Grassl, T. Davies, *Lattice modelling of corrosion induced cracking and bond in reinforced concrete*, *Cem. Concr. Compos.* 33 (9) (2011) 918–924.
- [16] K.K. Tran, H. Nakamura, K. Kawamura, M. Kunieda, *Analysis of crack propagation due to rebar corrosion using RBSM*, *Cem. Concr. Compos.* 33 (9) (2011) 906–917.
- [17] H. Tang, K. Maekawa, K. Hai, *Analytical model of corrosion-induced cracks in concrete considering time-varying deformations of layers, mechanical properties of rust*, *Constr. Build. Mater.* 316 (September 2021) (2022) 125883.
- [18] Y. Zhao, J. Dong, Y. Wu, W. Jin, *Corrosion-induced concrete cracking model considering corrosion product-filled paste at the concrete / steel interface*, *Constr. Build. Mater.* 116 (2016) 273–280.
- [19] Y.X. Zhao, Y.Z. Wang, J.F. Dong, *Prediction of corrosion-induced concrete cracking under external loading and stirrup constraint*, *Constr. Build. Mater.* 266 (2021) 121053.
- [20] C. Wei, C.S. Wojnar, C. Wu, *Hydro-chemo-mechanical phase field formulation for corrosion induced cracking in reinforced concrete*, *Cem. Concr. Res.* 144 (May 2020) (2021) 106404.
- [21] G. Nossioni, R.S. Harichandran, *Electrochemical-Mechanistic Model for Concrete Cover Cracking Due to Corrosion Initiated by Chloride Diffusion*, *J. Mater. Civ. Eng.* 26 (6) (2014) 04014001.
- [22] J. Ožbolt, G. Balabanić, G. Periškić, M. Kušter, *Modelling the effect of damage on transport processes in concrete*, *Constr. Build. Mater.* 24 (9) (2010) 1638–1648.
- [23] J. Ožbolt, G. Balabanić, M. Kušter, *3D Numerical modelling of steel corrosion in concrete structures*, *Corros. Sci.* 53 (12) (2011) 4166–4177.
- [24] J. Ožbolt, F. Oršanić, G. Balabanić, M. Kušter, *Modeling damage in concrete caused by corrosion of reinforcement: Coupled 3D FE model*, *Int. J. Fract.* 178 (1–2) (2012) 233–244.
- [25] J. Ožbolt, F. Oršanić, G. Balabanić, *Modeling pull-out resistance of corroded reinforcement in concrete: Coupled three-dimensional finite element model*, *Cem. Concr. Compos.* 46 (2014) 41–55.
- [26] J. Ožbolt, F. Oršanić, G. Balabanić, *Modeling influence of hysteretic moisture behavior on distribution of chlorides in concrete*, *Cem. Concr. Compos.* 67 (2016) 73–84.
- [27] J. Ožbolt, F. Oršanić, G. Balabanić, *Modelling processes related to corrosion of reinforcement in concrete: coupled 3D finite element model*, *Struct. Infrastruct. Eng.* 13 (1) (2017) 135–146.
- [28] E. Sola, J. Ožbolt, G. Balabanić, Z.M. Mir, *Experimental and numerical study of accelerated corrosion of steel reinforcement in concrete: Transport of corrosion products*, *Cem. Concr. Res.* 120 (March) (2019) 119–131.
- [29] M. Kušter Marić, J. Ožbolt, G. Balabanić, *Reinforced concrete bridge exposed to extreme maritime environmental conditions and mechanical damage: Measurements and numerical simulation*, *Eng. Struct.* 205 (December 2019) (2020) 110078.
- [30] A.O.S. Solgaard, A. Michel, M.R. Geiker, H. Stang, *Concrete cover cracking due to uniform reinforcement corrosion*, *Mater. Struct.* 46 (11) (2013) 1781–1799.
- [31] M. Flint, A. Michel, S.L. Billington, M.R. Geiker, *Influence of temporal resolution and processing of exposure data on modeling of chloride ingress and reinforcement corrosion in concrete*, *Mater. Struct.* 47 (4) (2014) 729–748.
- [32] A. Michel, B.J. Pease, A. Peterová, M.R. Geiker, H. Stang, A.E.A. Thybo, *Penetration of corrosion products and corrosion-induced cracking in reinforced cementitious materials: Experimental investigations and numerical simulations*, *Cem. Concr. Compos.* 47 (2014) 75–86.
- [33] A.E.A. Thybo, A. Michel, H. Stang, *Smear crack modelling approach for corrosion-induced concrete damage*, *Mater. Struct.* 50 (2) (2017) 1–14.
- [34] M.R. Geiker, A. Michel, M.D. Lepech, J.-Y. Wu, H. Stang, *Multi-scale and multi-physics deterioration modelling for design and assessment of reinforced concrete structures*, *RILEM Tech. Lett.* 2 (2017) 119–128.
- [35] X. Zhu, G. Zi, *A 2D mechano-chemical model for the simulation of reinforcement corrosion and concrete damage*, *Constr. Build. Mater.* 137 (2017) 330–344.
- [36] Z.P. Bažant, *Physical model for steel corrosion in concrete sea structures - application*, *J. Struct. Div. (ASCE)* 105 (6) (1979) 1155–1166.
- [37] Z.P. Bažant, *Physical model for steel corrosion in concrete sea structures - theory*, *J. Struct. Div. (ASCE)* 105 (6) (1979) 1137–1153.
- [38] J. Chen, W. Zhang, X. Gu, *Modeling time-dependent circumferential non-uniform corrosion of steel bars in concrete considering corrosion-induced cracking effects*, *Eng. Struct.* 201 (September) (2019) 109766.
- [39] J. Chen, W. Zhang, Z. Tang, Q. Huang, *Experimental and numerical investigation of chloride-induced reinforcement corrosion and mortar cover cracking*, *Cem. Concr. Compos.* 111 (November 2019) (2020) 103620.
- [40] U.M. Angst, *Challenges and opportunities in corrosion of steel in concrete*, *Mater. Struct.* 51 (1) (2018) 1–20.
- [41] M.R. Geiker, A. Michel, H. Stang, M.D. Lepech, *Limit states for sustainable reinforced concrete structures*, *Cem. Concr. Res.* 122 (May) (2019) 189–195.
- [42] U.M. Angst, *Durable concrete structures: cracks & corrosion and corrosion & cracks*, in: P.G. G. Pijaudier-Cabot, C.L. Borderie (Eds.), *10th International Conference on Fracture Mechanics of Concrete and Concrete Structures FraMCoS-X*, 2019, 233307.

- [43] M. Stefanoni, Z. Zhang, U.M. Angst, B. Elsener, The kinetic competition between transport and oxidation of ferrous ions governs precipitation of corrosion products in carbonated concrete, *RILEM Tech. Lett.* 3 (2018) 8–16.
- [44] F.E. Furcas, B. Lothenbach, O.B. Isgor, S. Mundra, Z. Zhang, U.M. Angst, Solubility and speciation of iron in cementitious systems, *Cem. Concr. Res.* 151 (September 2021) (2022) 106620.
- [45] Z. Zhang, U.M. Angst, Modelling transport and precipitation of corrosion products in cementitious materials: A sensitivity analysis, in: *Life-Cycle Civil Engineering: Innovation, Theory and Practice*, (February) 2021, pp. 747–753.
- [46] A. Poursaei, L. K., I. Lasa, C. Hansson, D. McDonald, S. Yeomans, R. Holland, K. Kurtis, L. Kahn, G. Moriconi, P. Ziehl, M. ElBatanouny, O. Burkan Isgor, C. Andrade, R. Spragg, C. Qiao, J. Weiss, Corrosion of Steel in Concrete Structures, in: A. Poursaei (Ed.), *Corrosion of Steel in Concrete Structures*, Woodhead Publishing, 2016, pp. 19–33.
- [47] W. Zhang, J. Chen, X. Luo, Effects of impressed current density on corrosion induced cracking of concrete cover, *Constr. Build. Mater.* 204 (2019) 213–223.
- [48] C. Andrade, A. Cesetti, G. Mancini, F. Tondolo, Estimating corrosion attack in reinforced concrete by means of crack opening, *Struct. Concr.* 17 (4) (2016) 533–540.
- [49] J. Marchand, E. Samson, K.A. Snyder, J.J. Beaudoin, Unsaturated Porous Media: Ion Transport Mechanism Modeling, in: *Encyclopedia of Surface and Colloid Science*, Third Edition, CRC Press, 2016, pp. 7488–7497.
- [50] G.W. Scherer, Crystallization in pores, *Cem. Concr. Res.* 29 (8) (1999) 1347–1358.
- [51] R.J. Flatt, F. Caruso, A.M.A. Sanchez, G.W. Scherer, Chemo-mechanics of salt damage in stone, *Nature Commun.* 5 (2014) 1–5.
- [52] R.J. Flatt, N. Aly Mohamed, F. Caruso, H. Derluyn, J. Desarnaud, B. Lubelli, R.M. Espinosa, L. Pel, C. Rodriguez-Navarro, G.W. Scherer, N. Shahidzadeh, M. Steiger, Predicting salt damage in practice: A theoretical insight into laboratory tests, *RILEM Tech. Lett.* 2 (2017) 108–118.
- [53] O. Coussy, Deformation and stress from in-pore drying-induced crystallization of salt, *J. Mech. Phys. Solids* 54 (8) (2006) 1517–1547.
- [54] G. Castellazzi, C. Colla, S. De Miranda, G. Formica, E. Gabrielli, L. Molari, F. Ubertini, A coupled multiphase model for hygrothermal analysis of masonry structures and prediction of stress induced by salt crystallization, *Constr. Build. Mater.* 41 (2013) 717–731.
- [55] M. Koniorczyk, D. Gawin, Modelling of salt crystallization in building materials with microstructure - Poromechanical approach, *Constr. Build. Mater.* 36 (2012) 860–873.
- [56] R.M. Espinosa, L. Franke, G. Deckelmann, Phase changes of salts in porous materials: Crystallization, hydration and deliquescence, *Constr. Build. Mater.* 22 (8) (2008) 1758–1773.
- [57] L. Chemin, D.V. Val, Prediction of corrosion-induced cover cracking in reinforced concrete structures, *Constr. Build. Mater.* 25 (4) (2011) 1854–1869.
- [58] A. Roshan, M. Noël, B. Martín-pérez, Validation of thick-walled cylinder analogy for modelling corrosion-induced concrete cover cracking, *Constr. Build. Mater.* 238 (2020) 117724.
- [59] Y.G. Du, A.H. Chan, L.A. Clark, Finite element analysis of the effects of radial expansion of corroded reinforcement, *Comput. Struct.* 84 (13–14) (2006) 917–929.
- [60] D. Krajcinovic, M. Basista, K. Mallick, D. Sumarac, Chemo-micromechanics of brittle solids, *J. Mech. Phys. Solids* 40 (5) (1992) 965–990.
- [61] M. Basista, W. Weglewski, Micromechanical modeling of sulphate corrosion in concrete: Influence of ettringite forming reaction, *Theor. Appl. Mech.* 35 (1–3) (2008) 29–52.
- [62] M. Basista, W. Weglewski, Chemically assisted damage of concrete: A model of expansion under external sulfate attack, *Int. J. Damage Mech.* 18 (2) (2009) 155–175.
- [63] O. Evans, M. Spiegelman, P.B. Kelemen, A Poroelastic Model of Serpentinization: Exploring the Interplay between Rheology, Surface Energy, Reaction, and Fluid Flow, *J. Geophys. Res.: Solid Earth* 123 (10) (2018) 8653–8675.
- [64] O. Evans, M. Spiegelman, P.B. Kelemen, Phase-Field Modeling of Reaction-Driven Cracking: Determining Conditions for Extensive Olivine Serpentinization, *J. Geophys. Res.: Solid Earth* 125 (1) (2020) 1–21.
- [65] B. Bourdin, G.A. Francfort, J.J. Marigo, Numerical experiments in revisited brittle fracture, *J. Mech. Phys. Solids* 48 (4) (2000) 797–826.
- [66] H. Amor, J.J. Marigo, C. Maurini, Regularized formulation of the variational brittle fracture with unilateral contact: Numerical experiments, *J. Mech. Phys. Solids* 57 (8) (2009) 1209–1229.
- [67] C. Miehe, F. Welschinger, M. Hofacker, Thermodynamically consistent phase-field models of fracture: Variational principles and multi-field FE implementations, *Internat. J. Numer. Methods Engrg.* 83 (10) (2010) 1273–1311.
- [68] J.Y. Wu, V.P. Nguyen, A length scale insensitive phase-field damage model for brittle fracture, *J. Mech. Phys. Solids* 119 (2018) 20–42.
- [69] P.K. Kristensen, C.F. Niordson, E. Martínez-Pañeda, Applications of phase field fracture in modelling hydrogen assisted failures, *Theor. Appl. Fract. Mech.* 110 (November) (2020).
- [70] W. Tan, E. Martínez-Pañeda, Phase field predictions of microscopic fracture and R-curve behaviour of fibre-reinforced composites, *Compos. Sci. Technol.* 202 (August 2020) (2021).
- [71] Z.P. Bažant, Y. Xi, S.G. Reid, Statistical Size Effect in Quasi-Brittle Structures: I. Is Weibull Theory Applicable? *J. Eng. Mech.* 117 (11) (1991) 2609–2622.
- [72] J.-Y. Wu, A unified phase-field theory for the mechanics of damage and quasi-brittle failure, *J. Mech. Phys. Solids* 103 (2017) 72–99.
- [73] J.-Y. Wu, Robust numerical implementation of non-standard phase-field damage models for failure in solids, *Comput. Methods Appl. Mech. Engrg.* 340 (2018) 767–797.
- [74] T. Wu, L. De Lorenzis, A phase-field approach to fracture coupled with diffusion, *Comput. Methods Appl. Mech. Engrg.* 312 (2016) 196–223.
- [75] E. Martínez-Pañeda, Z.D. Harris, S. Fuentes-Alonso, J.R. Scully, J.T. Burns, On the suitability of slow strain rate tensile testing for assessing hydrogen embrittlement susceptibility, *Corros. Sci.* 163 (August 2019) (2020) 108291.
- [76] V. Baroghel-Bouny, M. Thiéry, X. Wang, Modelling of isothermal coupled moisture-ion transport in cementitious materials, *Cem. Concr. Res.* 41 (8) (2011) 828–841.
- [77] J. Bear, Y. Bachmat, *Introduction to Modeling of Transport Phenomena in Porous Media*, Springer Netherlands, 1990.
- [78] M. Stefanoni, U.M. Angst, B. Elsener, Kinetics of electrochemical dissolution of metals in porous media, *Nature Mater.* 18 (9) (2019) 942–947.
- [79] K.K. Sagoe-Crentsil, F.P. Glasser, “Green rust”, iron solubility and the role of chloride in the corrosion of steel at high pH, *Cem. Concr. Res.* 23 (4) (1993) 785–791.
- [80] P. Atkins, J. de Paula, J. Keeler, *Atkins’ Physical Chemistry* 11e, 11th editi, Oxford University Press, 2018, p. 1040.
- [81] B. Morgan, O. Lahav, The effect of pH on the kinetics of spontaneous Fe(II) oxidation by O₂ in aqueous solution - basic principles and a simple heuristic description, *Chemosphere* 68 (11) (2007) 2080–2084.
- [82] T. Mura, *Micromechanics of Defects in Solids*, Springer Netherlands, 1987.
- [83] P.K. Kristensen, C.F. Niordson, E. Martínez-Pañeda, A phase field model for elastic-gradient-plastic solids undergoing hydrogen embrittlement, *J. Mech. Phys. Solids* 143 (2020) 104093.
- [84] P.K. Kristensen, C.F. Niordson, E. Martínez-Pañeda, An assessment of phase field fracture: Crack initiation and growth, *Phil. Trans. R. Soc. A* 379 (2203) (2021) 20210021.
- [85] E. Lorentz, V. Godard, Gradient damage models: Toward full-scale computations, *Comput. Methods Appl. Mech. Engrg.* 200 (21–22) (2011) 1927–1944.
- [86] B. Bourdin, G.A. Francfort, J.J. Marigo, The variational approach to fracture, *J. Elast.* 91 (1–3) (2008) 5–148.
- [87] H.A.W. Cornelissen, D.A. Hordijk, H.W. Reinhardt, Two-Dimensional Theories of Anchorage Zone Stresses in Post-Tensioned Prestressed Beams, *ACI J. Proc.* 59 (10) (1962) 45–56.
- [88] S. Zhou, T. Rabczuk, X. Zhuang, Phase field modeling of quasi-static and dynamic crack propagation: COMSOL implementation and case studies, *Adv. Eng. Softw.* 122 (March) (2018) 31–49.
- [89] F. Pedrosa, C. Andrade, Corrosion induced cracking: Effect of different corrosion rates on crack width evolution, *Constr. Build. Mater.* 133 (2017) 525–533.
- [90] EN 1992-1-1 Eurocode 2: Design of Concrete Structures - Part 1-1: General Rules and Rules for Buildings, Standard, European Committee for Standardization, Brussels, 2004.
- [91] Z.P. Bažant, E. Becq-Giraudon, Statistical prediction of fracture parameters of concrete and implications for choice of testing standard, *Cem. Concr. Res.* 32 (4) (2002) 529–556.
- [92] Y. Zhao, W. Jin, Chapter 2 - Steel Corrosion in Concrete, in: Y. Zhao, W. Jin (Eds.), *Steel Corrosion-Induced Concrete Cracking*, Butterworth-Heinemann, 2016, pp. 19–29.
- [93] T.Q. Ansari, J.L. Luo, S.Q. Shi, Modeling the effect of insoluble corrosion products on pitting corrosion kinetics of metals, *Npj Mater. Degrad.* 3 (1) (2019) 1–12.
- [94] T.C. Powers, T.L. Brownyard, Studies of the physical properties of hardened portland cement paste, *Am. Concr. Inst., ACI Special Publ. SP-249* (October 1946) (1946) 265–617.
- [95] O.X. Leupin, N.R. Smart, Z. Zhang, M. Stefanoni, U.M. Angst, A. Papafotiou, N. Diomidis, Anaerobic corrosion of carbon steel in bentonite: An evolving interface, *Corros. Sci.* 187 (December 2020) (2021) 109523.
- [96] U.M. Angst, M.R. Geiker, A. Michel, C. Gehlen, H. Wong, O.B. Isgor, B. Elsener, C.M. Hansson, R. François, K. Hornbostel, R. Polder, M.C. Alonso, M. Sanchez, M.J. Correia, M. Criado, A. Sagiúés, N. Buenfeld, The steel-concrete interface, *Mater. Struct.* 50 (2) (2017).

- [97] Y. Navidtehrani, C. Betegón, E. Martínez-Pañeda, A general framework for decomposing the phase field fracture driving force, particularised to a Drucker–Prager failure surface, *Theor. Appl. Fract. Mech.* 121 (May) (2022) 103555.
- [98] H.S. Wong, Y.X. Zhao, A.R. Karimi, N.R. Buenfeld, W.L. Jin, On the penetration of corrosion products from reinforcing steel into concrete due to chloride-induced corrosion, *Corros. Sci.* 52 (7) (2010) 2469–2480.
- [99] E. Chen, C.K. Leung, Finite element modeling of concrete cover cracking due to non-uniform steel corrosion, *Eng. Fract. Mech.* 134 (2015) 61–78.
- [100] C. Alonso, C. Andrade, J. Rodríguez, J.M. Díez, Factors controlling cracking of concrete affected by reinforcement corrosion, *Mater. Struct.* 31 (211) (1996) 435–441.
- [101] F. Freddi, M. Lorenzo, A predictive phase-field approach for cover cracking in corroded concrete elements, *Theor. Appl. Fract. Mech.* (2022) 103657.
- [102] C. Miehe, L.M. Schänzel, H. Ulmer, Phase field modeling of fracture in multi-physics problems. Part I. Balance of crack surface and failure criteria for brittle crack propagation in thermo-elastic solids, *Comput. Methods Appl. Mech. Engrg.* 294 (2015) 449–485.
- [103] T. Clayton, R. Duddu, M. Siegert, E. Martínez-Pañeda, A stress-based poro-damage phase field model for hydrofracturing of creeping glaciers and ice shelves, *Eng. Fract. Mech.* (2022) 108693.